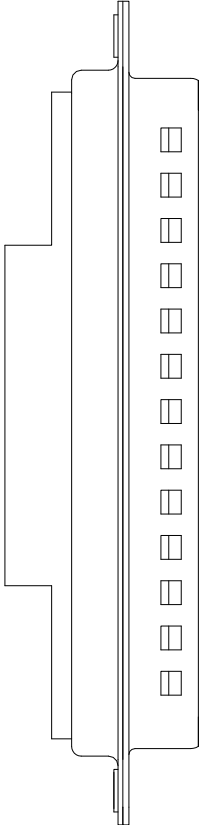
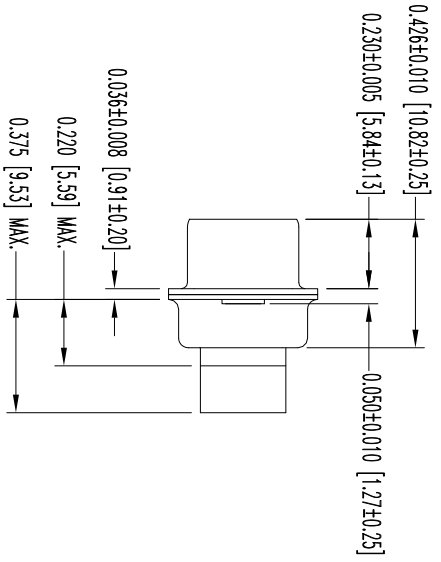
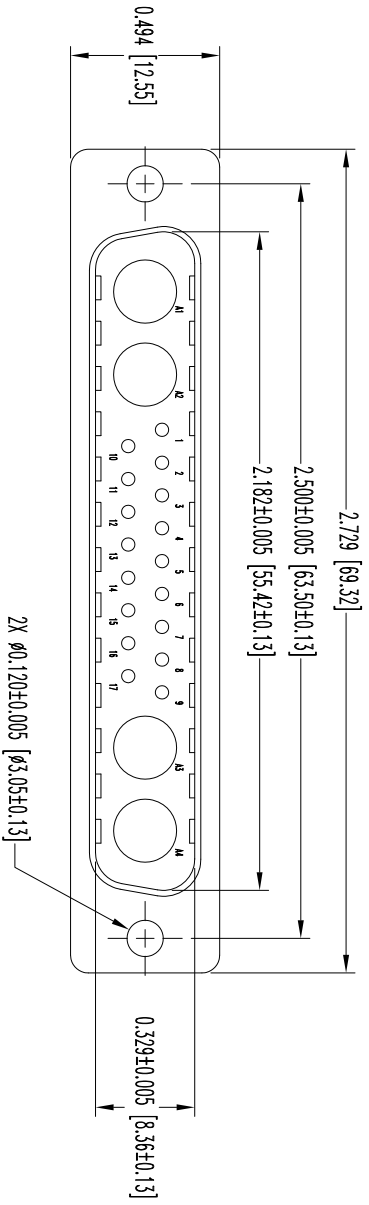


THIS DRAWING CONTAINS INFORMATION PROPRIETARY TO POSITRONIC INDUSTRIES INC. THE DATA ON THIS DRAWING TO BE RELIABLE SINCE THE USER EMPLOYS SUCH INFORMATION AT HIS OWN DISCRETION. POSITRONIC INDUSTRIES INC. ASSUMES NO LIABILITY FOR RESULTS OBTAINED OR DAMAGES INCURRED FROM USE OF SUCH INFORMATION IN WHOLE OR IN PART.

SK13071

DATE	REV	REVISION RECORD	APP	DR	CK
11-8	NC	ECO 34711	COLB	LO	COLB
10-24	A	ECO 41154	TK	BE	COLB



- NOTES:
1. MATERIALS AND FINISHES:
INSULATOR: GLASS FILLED POLYESTER PER ASTM D5927, UL 94V-0, BLUE COLOR.
SHELLS: STEEL, TIN PLATE AND DIMPLED.
 2. DETAILED PRODUCT, MECHANICAL AND ELECTRICAL INFORMATION IS AVAILABLE IN THE LATEST STANDARD DENSITY COMBO-D PRODUCT PUBLICATION. VISIT CONNECTROSTRONIC.COM/PRODUCTS/1/STANDARDENSITYCOMBO-D OR CONNECTROSTRONIC.COM
 3. CONNECTORS ARE COMPLIANT TO THE CURRENT ROHS DIRECTIVE.
 4. DIMENSIONS ARE IN INCHES [MILLIMETERS].



POSITRONIC INDUSTRIES INC.
www.connectpositronic.com

DECIMAL TOL. ± 0.015 [0.38]	SCALE N.T.S.	DRAWN BY L. OWENS
ANGULAR TOL. ± 5°	CBC SERIES	APPROVED BY COLB

TITLE CBC21W4M0000Z/AA	DATE 11-8-11	DRAWING NUMBER SK13071	REV. A
---------------------------	-----------------	---------------------------	-----------