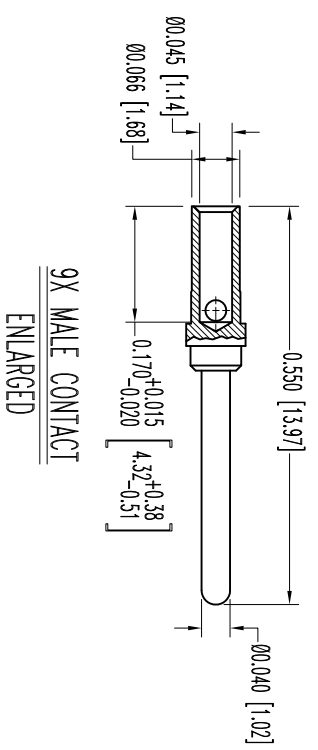
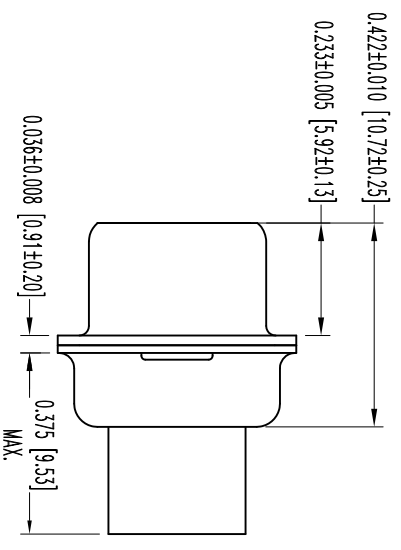
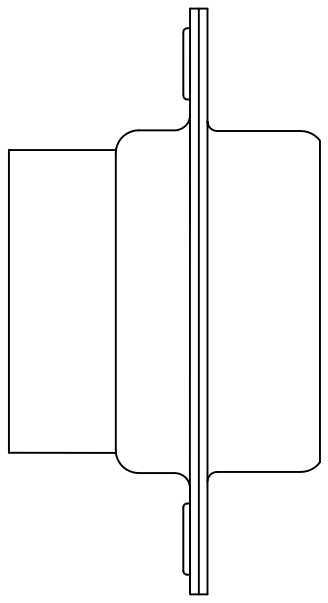
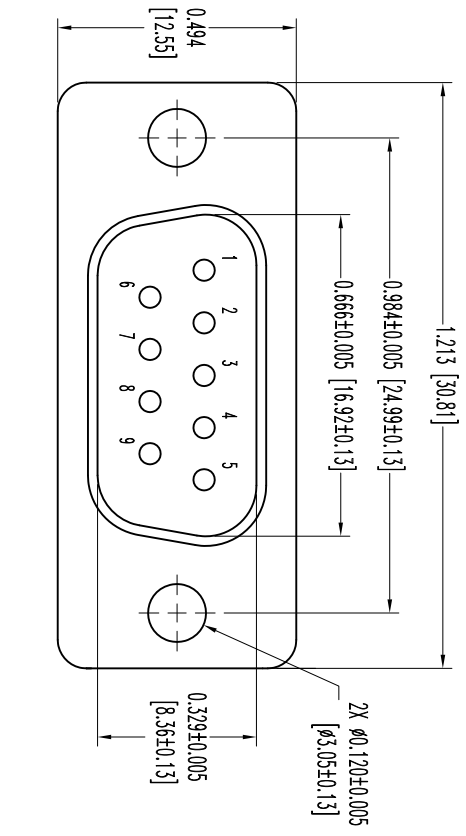


THIS DRAWING CONTAINS INFORMATION PROPRIETARY TO POSITRONIC AND ITS SUBSIDIARIES. POSITRONIC BELIEVES THE DATA ON THIS DRAWING TO BE RELIABLE, SINCE THE TECHNICAL INFORMATION IS GIVEN BY THE MANUFACTURER AND THE USER HAS BEEN ADVISED OF THE LIMITATIONS AND RISK. POSITRONIC ASSUMES NO RESPONSIBILITY FOR RESULTS OBTAINED OR DAMAGES INCURRED FROM USE OF SUCH INFORMATION IN WHOLE OR IN PART.



- NOTES:
1. MATERIALS AND FINISHES:
INSULATOR: GLASS FILLED DAP PER ASTM-D-5948, SDC-F, UL 94V-0, GREEN COLOR.
CONTACTS: PRECISION MACHINED COPPER ALLOY, GOLD FLASH OVER NICKEL PLATE.
SHELLS: STEEL WITH TIN PLATE.
 2. DETAILED PRODUCT, ELECTRICAL, AND MECHANICAL INFORMATION IS AVAILABLE IN THE LATEST STANDARD DENSITY D-SUB PRODUCT PUBLICATION. VISIT CONNECTPOSITRONIC.COM/PRODUCTS/45/STANDARD-DENSITY-D-SUBMINIATURE OR CONNECTPOSITRONIC.COM.
 3. DIMENSIONS ARE IN INCHES [MILLIMETERS].

DATE	REV	REVISION RECORD	APP	DR	CK
2-11	NC	ECO 33665	COLM	ME	COLM

SK12175

		POSITRONIC INDUSTRIES INC. www.connectpositronic.com		FSC# 28198		
		RD SERIES	SCALE N.T.S.	DRAWN BY ME	APPROVED BY COLM	DATE 2-11-11
DECIMAL TOL. ± 0.015 [0.38]	TITLE RD9M1000X					REV. NC
ANGULAR TOL. $\pm 5^\circ$						