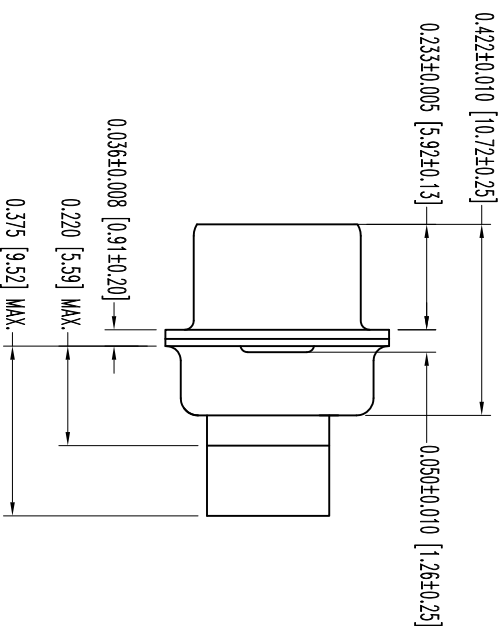
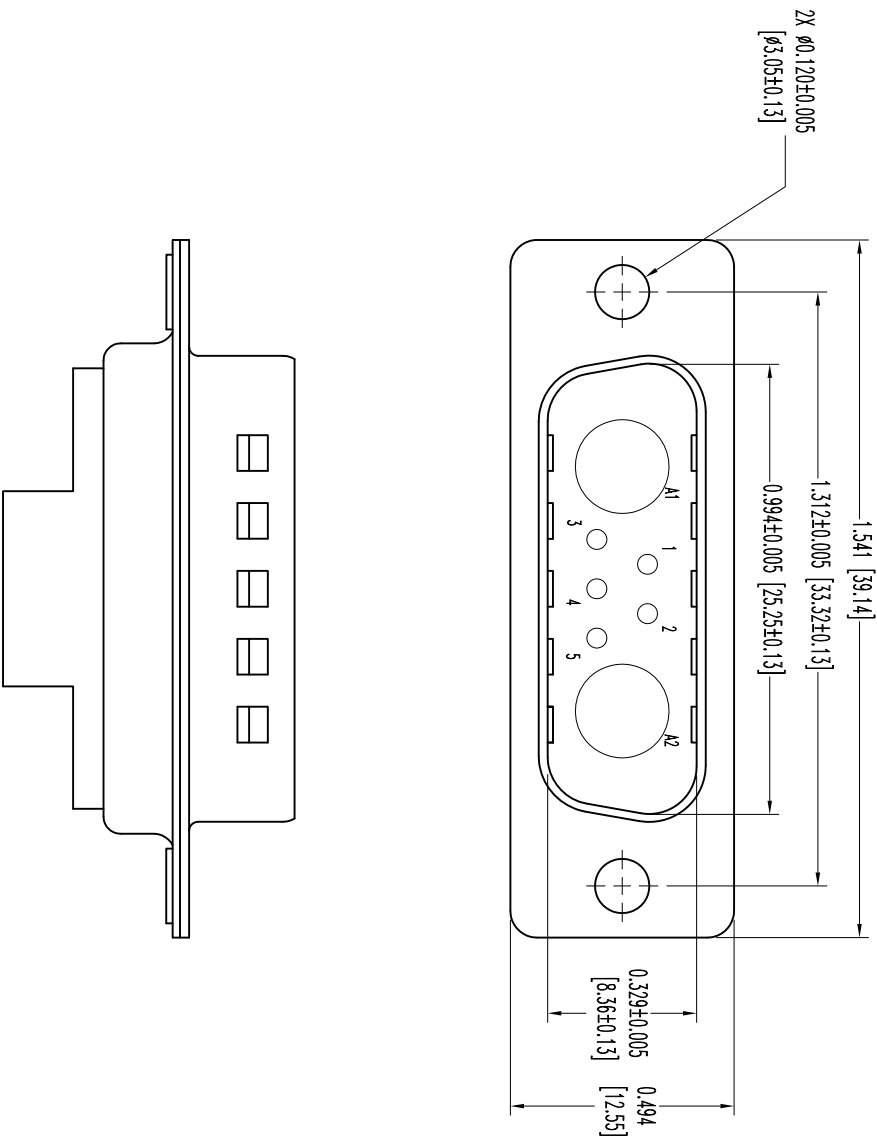


THIS DRAWING CONTAINS INFORMATION PROPRIETARY TO POSITRONIC AND ITS SUBSIDIARIES. POSITRONIC BELIEVES THE DATA ON THIS DRAWING TO BE RELIABLE, SINCE THE RESEARCH AND DEVELOPMENT EXPENSES INCURRED IN THE DESIGN AND CONSTRUCTION OF THIS PRODUCT ARE SO GREAT THAT THE RESULTS OBTAINED OR DAMAGES INCURRED FROM USE OF SUCH INFORMATION IN WHOLE OR IN PART.



- NOTES:
1. MATERIALS AND FINISHES:
INSULATOR: GLASS FILLED POLYESTER PER ASTM D5927, UL 94V-0, BLUE COLOR.
SHELLS: STEEL, TIN PLATED AND DIMPLED.
 2. DETAILED PRODUCT, ELECTRICAL, AND MECHANICAL INFORMATION IS AVAILABLE IN THE LATEST STANDARD DENSITY COMBO-D PRODUCT PUBLICATION. VISIT CONNECTPOSITRONIC.COM/PRODUCTS/1/STANDARDENSITYCOMBO-D OR CONNECTPOSITRONIC.COM.
 3. CONNECTORS ARE ROHS COMPLIANT PER ROHS DIRECTIVE 2002/95/EC OF 27 JAN 2003.
 4. DIMENSIONS ARE IN INCHES [MILLIMETERS].

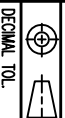
DATE	REV	REVISION/RECORD	APP	DR	CK
6-8	NC	ECO 26111	RW	ME	TK
11-9	A	ECO 34707	COLM	BE	COLM
11					

SK7559



POSITRONIC INDUSTRIES INC.
www.connectpositronic.com

FSC# 28198



DECIMAL TOL.
± 0.015 [0.38]

CBC SERIES

SCALE: N.T.S.
DRAWN BY: M. ENBA
APPROVED BY: RW

TITLE

CBC7W2M0000Z/AA

ANGULAR TOL.
± 5°

DATE: 6-8-06

DRAWING NUMBER: SK7559

REV: A