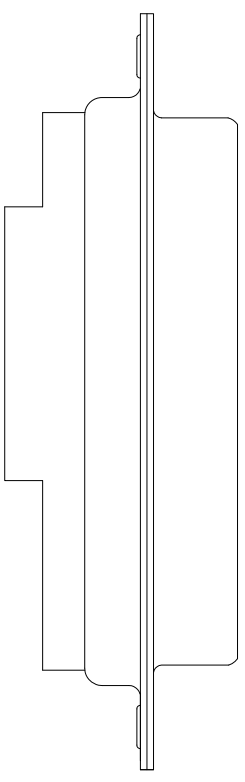
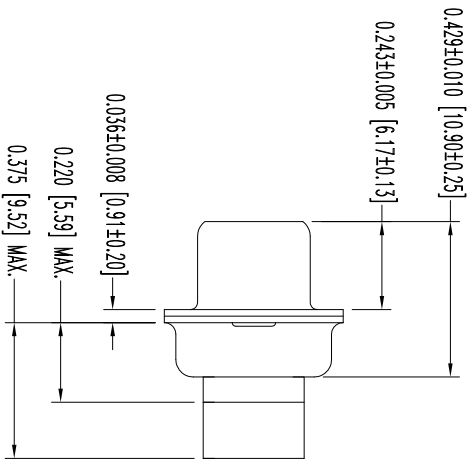
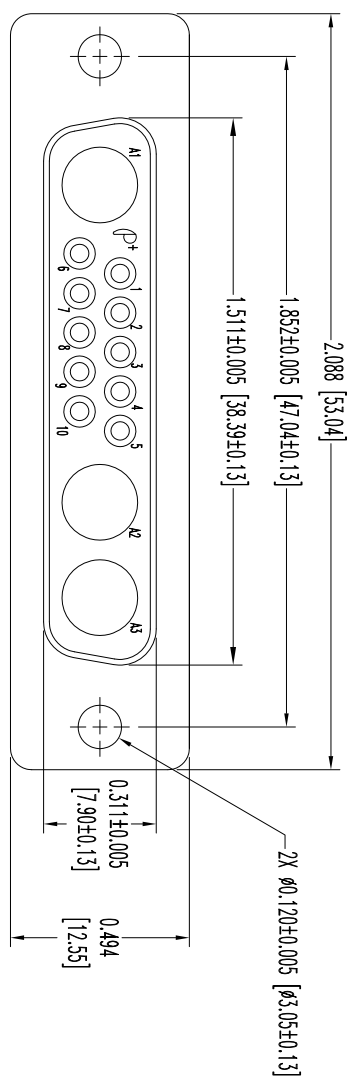


THIS DRAWING CONTAINS INFORMATION PROPRIETARY TO CONNECTPOSTRONIC, INC. THE INFORMATION IS GIVEN AS IS AND IS SUBJECT TO CHANGE WITHOUT NOTICE. THE USER SHALL OBTAIN SUCH INFORMATION AT HIS OWN DISCRETION AND SHALL BE RESPONSIBLE FOR OBTAINING ALL NECESSARY INFORMATION TO MAKE SUCH INFORMATION IN WHOLE OR IN PART.

SK13075

DATE	REV	REVISION RECORD	APP	DR	CK
11-8	NC	ECO 34711	COLB	LO	COLB
10-25	A	ECO 41155	TK	BE	COLB



NOTES:

1. MATERIALS AND FINISHES:
INSULATOR: GLASS FILLED POLYESTER PER ASTM D5927, UL 94V-0, BLUE COLOR.
SHELLS: STEEL, WITH TIN PLATE.
2. DETAILED PRODUCT, MECHANICAL AND ELECTRICAL INFORMATION IS AVAILABLE IN THE LATEST STANDARD DENSITY COMBO-D PRODUCT PUBLICATION. VISIT CONNECTPOSTRONIC.COM/PRODUCTS/1/STANDARDENSITYCOMBO-D OR CONNECTPOSTRONIC.COM
3. CONNECTORS ARE COMPLIANT TO THE CURRENT ROHS DIRECTIVE.
4. DIMENSIONS ARE IN INCHES [MILLIMETERS].



POSITRONIC INDUSTRIES INC.
www.connectpositronic.com

DECIMAL TOL. ± 0.015 [0.38]	SCALE N.T.S.	DRAWN BY L. OWENS	DATE 11-8-11	DRAWING NUMBER SK13075	REV. A
ANGULAR TOL. ± 5°	CBC SERIES	APPROVED BY COLB	TITLE CBC13W3S0000X/AA	FSC# 28198	