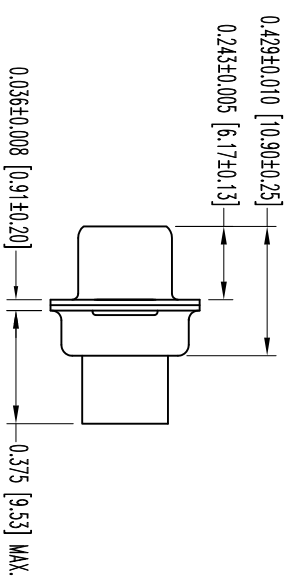
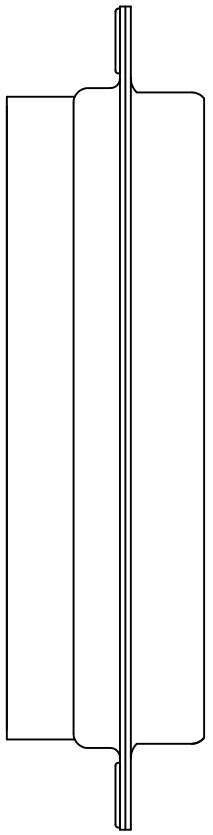
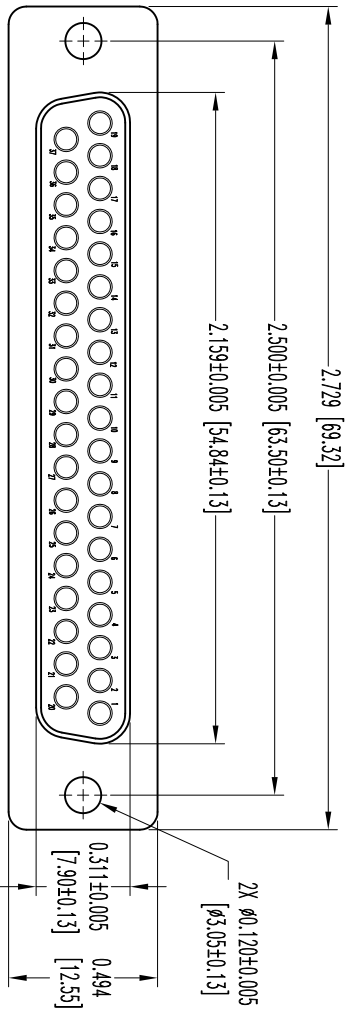


THIS DRAWING CONTAINS INFORMATION PROPRIETARY TO CONNECTPOSTRONIC AND IS SUBJECT TO THE TERMS AND CONDITIONS OF THE LICENSE AGREEMENT. THE USER EMPLOYER'S SUCH INFORMATION AT HIS OWN DISCRETION. RESULTS OBTAINED OR DAMAGES INCURRED FROM USE OF SUCH INFORMATION IN WHOLE OR IN PART.



- NOTES:
1. MATERIALS AND FINISHES:  
 INSULATOR: GLASS FILLED DAP PER ASTM-D-5948, S06-F, UL 94V-0, GREEN COLOR.  
 SHELLS: STEEL, ZINC PLATE WITH CHROMATE SEAL.
  2. DETAILED PRODUCT, ELECTRICAL, AND MECHANICAL INFORMATION IS AVAILABLE IN THE LATEST STANDARD DENSITY D-SUB PRODUCT PUBLICATION. VISIT [CONNECTPOSTRONIC.COM/PRODUCTS/45/STANDARDENSITYD-SUBMINIATURE](http://CONNECTPOSTRONIC.COM/PRODUCTS/45/STANDARDENSITYD-SUBMINIATURE) OR [CONNECTPOSTRONIC.COM](http://CONNECTPOSTRONIC.COM).
  3. DIMENSIONS ARE IN INCHES [MILLIMETERS].

DATE	REV	REVISION RECORD	APP	DR	OK
3-6	NC	ECO 35331	COLF	BS	COLF

SK13866



**POSITRONIC INDUSTRIES INC.**  
[www.connectpositronic.com](http://www.connectpositronic.com)  
 FSC# 28198

ANGULAR TOL. ± 5°	DECIMAL TOL. ± 0.015 [0.38]	RD SERIES	SCALE N.T.S.	DRAWN BY B SHELLADY	DATE 3-06-12	DRAWING NUMBER SK13866	REV. NC
				APPROVED BY COLF			
		TITLE RD37S000000					