

Ultra Miniature 400 Hz Transformers

.375 VA to 2.4 VA

Primary Voltages of 115V or 26 V

Printed Circuit Thru Hole Construction

Specifications

- Manufactured to MIL-PRF-27, Grade 5, Class S.
- 90° C Ambient.
- Input Primary 115v-400 Hz±20 Hz or 26V-400Hz±20Hz (Your Choice-Just Choose The Proper Part No.)
- Regulation is 24% (T Units Have Regulation of 17%)
- Secondary Voltage Adjusted to Nominal Value at Half Load.

Ultra Miniature 400 Hz Transformers

Sec/ Volt	Sec/ Current ma	Model Number 115V Primary	Model Number 26V Primary	PICO PRICE 1-9* (US \$)
5.0 CT	75	L-8948	L-8951	91.81
	150	N-6948	N-6951	91.81
	204	R-20650	R-20815	135.61
	338	S-21650	S-21815	120.63
	480	T-22650	T-22815	125.77
	6.3 CT	59.5	L-8947	L-8952
119		N-6947	N-6952	91.81
162		R-20655	R-20820	135.61
268		S-21655	S-21820	120.63
381		T-22655	T-22820	125.77
8.0 CT		47	L-8946	L-8953
	94	N-6946	N-6953	91.81
	128	R-20660	R-20825	135.61
	211	S-21660	S-21825	120.63
	300	T-22660	T-22825	125.77
	10 CT	37.5	L-8945	L-8954
75		N-6945	N-6954	91.81
102		R-20665	R-20830	135.61
169		S-21665	S-21830	120.63
240		T-22665	T-22830	125.77

Sec/ Volt	Sec/ Current ma	Model Number 115V Primary	Model Number 26V Primary	PICO PRICE 1-9* (US \$)
--------------	-----------------------	------------------------------------	-----------------------------------	----------------------------------

12.8 CT	29 58.6 79.7 132 188	L-8940 N-6940 R-20670 S-21670 T-22670	L-8956 N-6956 R-20835 S-21835 T-22835	91.81 91.81 135.61 120.63 125.77
14 CT	26.8 53.6 72.9 121 171	L-8937 N-6937 R-20675 S-21675 T-22675	L-8957 N-6957 R-20840 S-21840 T-22840	91.81 91.81 135.61 120.63 125.77
16 CT	23 47 63.8 106 150	L-8935 N-6935 R-20680 S-21680 T-22680	L-8958 N-6958 R-20845 S-21845 T-22845	91.81 91.81 135.61 120.63 125.77
18 CT	20.8 41.7 56.7 93.9 133	L-8934 N-6934 R-20685 S-21685 T-22685	L-8959 N-6959 R-20850 S-21850 T-22850	91.81 91.81 135.61 120.63 125.77
20 CT	18.8 37.5 51 84.5 120	L-8933 N-6933 R-20690 S-21690 T-22690	L-8961 N-6961 R-20855 S-21855 T-22855	91.81 91.81 135.61 120.63 125.77
22 CT	17 34 46.4 76.8 109	L-8932 N-6932 R-20695 S-21695 T-22695	L-8962 N-6962 R-20860 S-21860 T-22860	91.81 91.81 135.61 120.63 125.77
24 CT	15.5 31 42.5 70.4 100	L-8930 N-6930 R-20700 S-21700 T-22700	L-8963 N-6963 R-20865 S-21865 T-22865	91.81 91.81 135.61 120.63 125.77
28 CT	13.4 26.8 36.4 60.4 85.7	L-8929 N-6929 R-20705 S-21705 T-22705	L-8964 N-6964 R-20870 S-21870 T-22870	91.81 91.81 135.61 120.63 125.77
31 CT	12 24 32.9 54.5 77.4	L-8927 N-6927 R-20710 S-21710 T-22710	L-8966 N-6966 R-20875 S-21875 T-22875	91.81 91.81 135.61 120.63 125.77
36 CT	10.4 20.8 28.3 46.9 66.7	L-8925 N-6925 R-20715 S-21715 T-22715	L-8967 N-6967 R-20880 S-21880 T-22880	91.81 91.81 135.61 120.63 125.77
39 CT	9.6 19.2 26.2 43.3 61.5	L-8924 N-6924 R-20720 S-21720 T-22720	L-8968 N-6968 R-20885 S-21885 T-22885	91.81 91.81 135.61 120.63 125.77

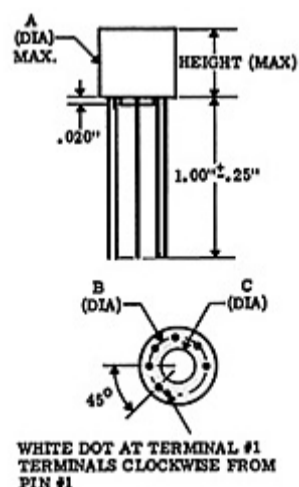
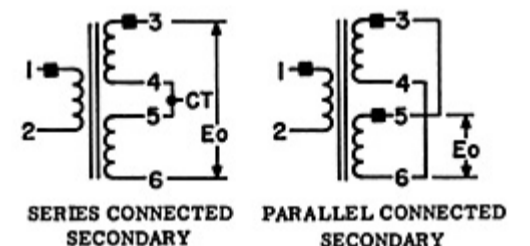
Sec/ Volt	Sec/ Current ma	Model Number 115V Primary	Model Number 26V Primary	PICO PRICE 1-9* (US \$)
43 CT	8.7 17.4 23.7 39.3 55.8	L-8923 N-6923 R-20725 S-21725 T-22725	L-8969 N-6969 R-20890 S-21890 T-22890	91.81 91.81 135.61 120.63 125.77
48 CT	7.8 15.6 21.1 35.2 50	L-8922 N-6922 R-20730 S-21730 T-22730	L-8971 N-6971 R-20895 S-21895 T-22895	91.81 91.81 135.61 120.63 125.77
56 CT	6.6 13.2 18.2 30.2 42.9	L-8920 N-6920 R-20735 S-21735 T-22735	L-8972 N-6972 R-20900 S-21900 T-22900	91.81 91.81 135.61 120.63 125.77
63 CT	6 11.9 16.2 26.9 38.2	L-8917 N-6917 R-20740 S-21740 T-22740	L-8973 N-6973 R-20905 S-21905 T-22905	91.81 91.81 135.61 120.63 125.77
68 CT	5.5 11 15 24.9 35.3	L-8915 N-6915 R-20745 S-21745 T-22745	L-8974 N-6974 R-20910 S-21910 T-22910	91.81 91.81 135.61 120.63 125.77
80 CT	4.6 9.4 12.1 21.1 30	L-8910 N-6910 R-20750 S-21750 T-22750	L-8976 N-6976 R-20915 S-21915 T-22915	91.81 91.81 135.61 120.63 125.77
88 CT	4.2 8.5 11.6 19.2 27.3	L-8905 N-6905 R-20755 S-21755 T-22755	L-8977 N-6977 R-20920 S-21920 T-22920	91.81 91.81 135.61 120.63 125.77
100 CT	3.7 8.5 10.2 16.9 24	L-8902 N-6902 R-20760 S-21760 T-22760	L-8978 N-6978 R-20925 S-21925 T-22925	91.81 91.81 135.61 120.63 125.77
115 CT	3.2 6.5 8.9 14.7 20.9	L-8900 N-6900 R-20765 S-21765 T-22765	L-8979 N-6979 R-20930 S-21930 T-22930	91.81 91.81 135.61 120.63 125.77
123 CT	8.3 13.7 19.5	R-20770 S-21770 T-22770	R-20935 S-21935 T-22935	135.61 120.63 125.77

138 CT	7.4 12.2 17.4	R-20775 S-21775 T-22775	R-20940 S-21940 T-22940	135.61 120.63 125.77
157 CT	6.5 10.8 15.3	R-20780 S-21780 T-22780	R-20945 S-21945 T-22945	135.61 120.63 125.77
175 CT	5.8 9.6 13.7	R-20785 S-21785 T-22785	R-20950 S-21950 T-22950	135.61 120.63 125.77

Sec/ Volt	Sec/ Current ma	Model Number 115V Primary	Model Number 26V Primary	PICO PRICE 1-9* (US \$)
200 CT	5.1 8.4 12	R-20790 S-21790 T-22790	R-20955 S-21955 T-22955	135.61 120.63 125.77
220 CT	7.7 10.9	S-21795 T-22795	S-21960 T-22960	126.75 132.12
250 CT	6.8 9.6	S-21800 T-22800	S-21965 T-22965	132.76 138.44
275 CT	6.1 8.7	S-21805 T-22805	S-21970 T-22970	139.33 151.06
310 CT	5.4 7.7	S-21810 T-22810	S-21975 T-22975	144.88 162.60

Features

- 400 Hz Aerospace Application.
- Smallest Possible Size.
- Printed Circuit Thru Hole Construction.
- Secondary Has Split Winding (Secondary Can Be Used at Half Voltage Twice the Current.)



Larger size drawing ^[1]

Case Size	Height (Max.)	A (Dia.) Max.	B (Dia.)	C (Dia.)	Terminal Dia.
L	.35	.51	.35	.218	.016 (.41)

N	.5	.51	.35	.218	.016 (.41)
R	.375	.75	.6	.475	.016 (.41)
S	.52	.75	.6	.475	.020 (.51)
T	.82	.75	.6	.475	.020 (.51)

[Click Here for Surface Mount Version of these Units](#) [2]

***Discount Prices:**

- 1-9 Net;
10-24 less 10%;
25-49 less 16%;
50-99 less 23%;
100-499 less 30%

Delivery - stock to one week for sample orders.

Ordering Instructions:

- No minimum.
Net 30 days F.O.B. Pelham, NY

For immediate engineering assistance or to place an order:

Call Toll Free: 800-431-1064

PICO Electronics, Inc.

143 Sparks Ave. Pelham, NY 10803-1810

Tel: 914-738-1400 or Fax: 914-738-8225

[Go back to Thru Hole Transformers and Inductors menu](#)[3]
