

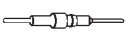




### Series 999 jumpers are available

With insulators in various colors for easier identification

Male version will fit standard receptacles; female version with open or closed body fits square pin headers

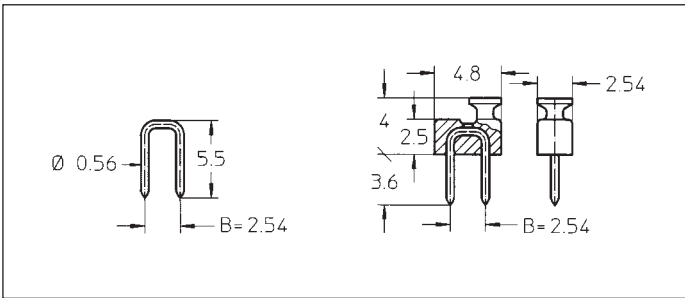
Platings	Sleeve 	Clip 	Pin 
19 39 90			0.25 $\mu\text{m}$ Au* 0.75 $\mu\text{m}$ Au* 5 $\mu\text{m}$ Sn Pb  * selective

### Ordering information

Replace **xx** with required plating code  
Applies to jumpers for square pin headers only

### Option:

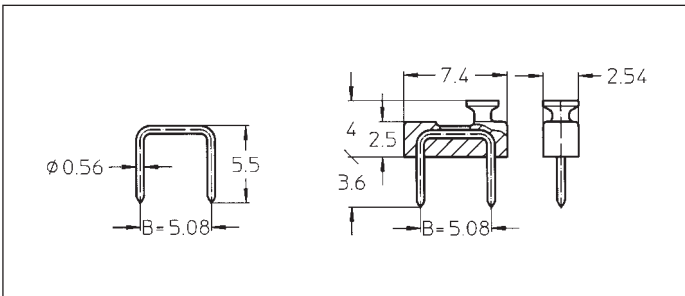
Wire dia 0.50 mm instead of 0.56 mm. Change second group of figures into 51. Example: 999-11-113-10 becomes 999-51-113-10. (Applies only to jumpers for receptacle connectors without insulator)



Platings:	
0.25 $\mu\text{m}$ Au	5 $\mu\text{m}$ Sn Pb
999-11-110-10	999-11-110-90
999-11-210-10	999-11-210-90
999-11-210-11	999-11-210-91

Jumpers for receptacle connectors. B = 2.54 mm

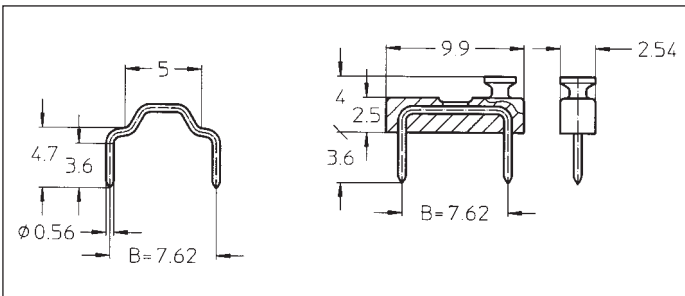
Insulator:  
none  
black  
red



Platings:	
0.25 $\mu\text{m}$ Au	5 $\mu\text{m}$ Sn Pb
999-11-112-10	999-11-112-90
999-11-220-10	999-11-220-90
999-11-220-11	999-11-220-91

Jumpers for receptacle connectors. B = 5.08 mm

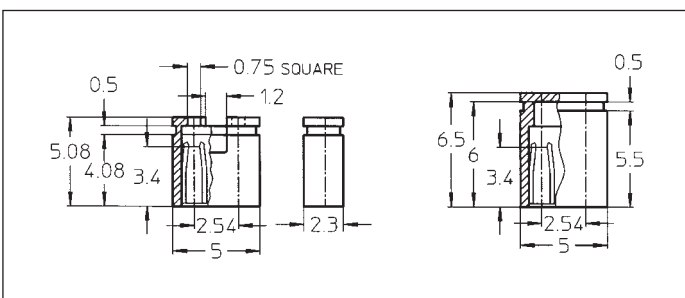
Insulator:  
none  
black  
red



Platings:	
0.25 $\mu\text{m}$ Au	5 $\mu\text{m}$ Sn Pb
999-11-113-10	999-11-113-90
999-11-230-10	999-11-230-90
999-11-230-11	999-11-230-91

Jumpers for receptacle connectors. B = 7.62 mm

Insulator:  
none  
black  
red



Body style	
Open body	Closed body
999-xx-310-00	999-xx-210-00
999-xx-310-02	999-xx-210-02
999-xx-310-06	999-xx-210-06

Female jumpers for 2.54 mm square pin headers:

black  
red  
blue