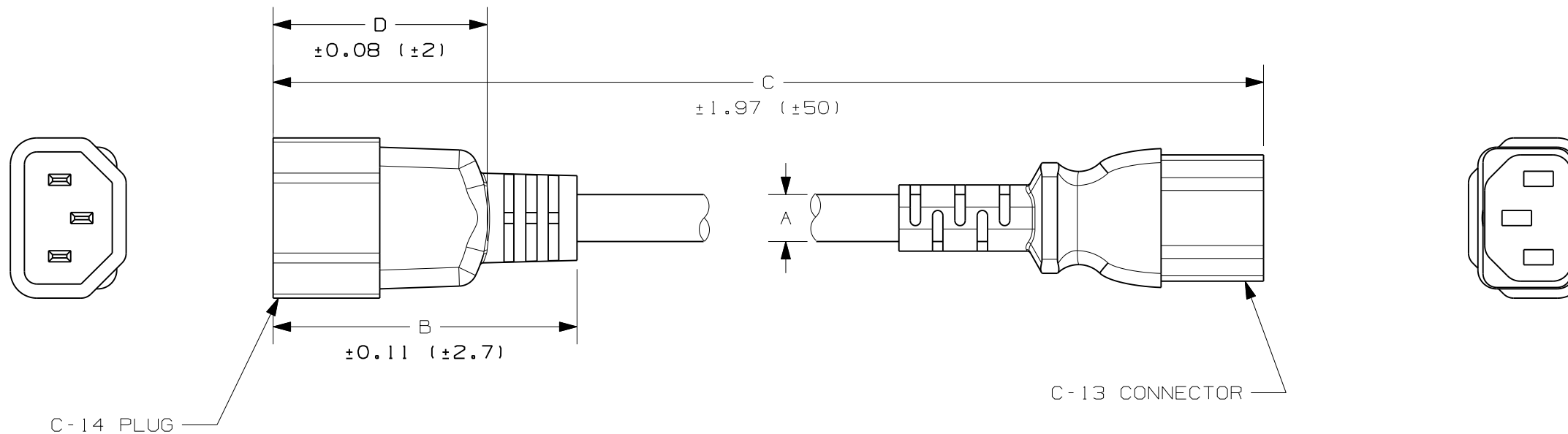


THIS COPY IS PROVIDED ON A RESTRICTED BASIS AND IS NOT TO BE USED IN ANY WAY DETRIMENTAL TO THE INTERESTS OF PANDUIT CORP.

PART #	A (REF) IN (mm)	B IN (mm)	C IN (mm)	D IN (mm)	APPROXIMATE WEIGHT LBS. (g)	COLOR
PC14C13BL1.5	0.32	2.17 (55.0)	18 (460)	1.53 (39.0)	0.18 (82)	BLACK
PC14C13BL2			24 (610)		0.21 (97)	
PC14C13BL3			39 (1000)		0.28 (125)	
PC14C13BL4			48 (1220)		0.34 (153)	
PC14C13BL5			59 (1500)		0.40 (182)	
PC14C13BL6.5			79 (2000)		0.46 (210)	
PC14C13BL7			84 (2134)		0.53 (238)	
PC14C13BL8			98 (2500)		0.60 (238)	
PC14C13BL9			108 (2740)		0.65 (295)	
PC14C13BL10			120 (3050)		0.71 (323)	
PC14C13GY1.5	0.32	2.17 (55.0)	18 (460)	1.53 (39.0)	0.18 (82)	GRAY
PC14C13GY2			24 (610)		0.21 (97)	
PC14C13GY3			39 (1000)		0.28 (125)	
PC14C13GY4			48 (1220)		0.34 (153)	
PC14C13GY5			59 (1500)		0.40 (182)	
PC14C13GY6.5			79 (2000)		0.46 (210)	
PC14C13GY7			84 (2134)		0.53 (238)	
PC14C13GY8			98 (2500)		0.60 (238)	
PC14C13GY9			108 (2740)		0.65 (295)	
PC14C13GY10			120 (3050)		0.71 (323)	



NOTES:

- SEE www.panduit.com FOR PART NUMBER SUFFIX DESIGNATION FOR PACKAGE SIZE.
- RATING: 10A/250V AC.
- CORD ASSEMBLY HAS THESE APPROVALS: VDE, CE, UL, CSA OR cUL.
- PRODUCT IS RoHS COMPLIANT.

REV	DATE	BY	CHK	APR	DESCRIPTION	ECN
00D	5-2-12	DBLA	DJW	KLN	ADDED 2' BLACK & GRAY CORDS	11K026BA-DC
00C	4-2-12	DBLA	DJW	KLN	ERROR ON PREVIOUS ECN	11K026BA-DC
00B	3-21-12	DBLA	DJW	KLN	ADDED 9' AND 10' BLACK & GRAY CORDS	11K026BA-DC
00A	12-18-11	DBLA			INITIAL DRAWING RELEASE	11K026BA-DC

TITLE IEC-320 C14 TO IEC-320 C13 POWER CORDS		PANDUIT TM
ITEM REVISION NAME 11K026BA/00.PRT	MATERIAL: VARIOUS	
DATASET FILE NAME 11K026BA_DC/00D.PRT		DRAWING NUMBER: 11K026BA-DC
UNLESS OTHERWISE SPECIFIED, DIMENSIONAL TOLERANCES ARE: IN (mm) .x : .1 (2.54) .xxx : .005 (.127) .xx : .01 (.25) ANGLES : 5°		
THIRD ANGLE PROJECTION	DRAWN BY: TMSA DATE: 12-2-11 CHK: GLZ SCALE: NTS	
SHT 1 OF 1		SIZE: B