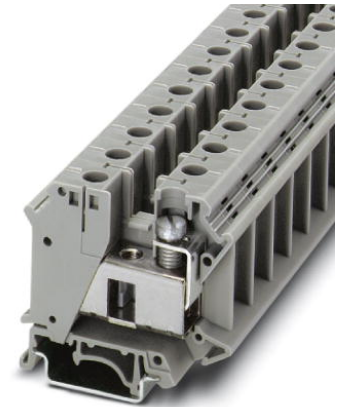



**UTI 35**

Order No.: 3074088

<http://catalog.phoenixcontact.net/phoenix/treeViewClick.do?UID=3074088>

Installation terminal block, Screw connection, Cross section: 0.75 mm<sup>2</sup> - 35 mm<sup>2</sup>, AWG: 18 - 2, Width: 15.2 mm, Color: gray, Mounting type: NS 35/7,5, NS 35/15

**Commercial data**

|                          |   |
|--------------------------|---|
| EAN                      |  |
| sales group              | A010  |
| Pack                     | 50 Pcs.   |
| Customs tariff           | 85369010  |
| Gross weight in pieces   | 0.046835 KG   |
| Net weight per piece     | 0.046835 KG   |
| Catalog page information | Page 85 (C-3-2013)  |

**Product notes**

WEEE/RoHS-compliant since:  
03/04/2008



<http://www.download.phoenixcontact.com>  
Please note that the data given here has been taken from the online catalog. For comprehensive information and data, please refer to the user documentation. The General Terms and Conditions of Use apply to Internet downloads.

**Technical data****General**

|   |      |
|---|------|
| Number of levels                        | 1    |
| Number of connections                   | 2    |
| Color                                   | gray |
| Insulating material                     | PA   |
| Inflammability class according to UL 94 | V2   |

**General**

|   |   |
|---|---|
| Maximum load current  | 125 A (with 35 mm <sup>2</sup> conductor cross section) |
| Rated surge voltage   | 8 kV  |
| Pollution degree  | 3   |
| Surge voltage category  | III   |
| Insulating material group   | I   |
| Connection in acc. with standard  | IEC 60947-7-1   |
| Maximum load current (lower level)  | 125 A   |
| Additional text   | with 35 mm <sup>2</sup> conductor cross section         |
| Nominal current I <sub>N</sub> (lower level)                                    | 125 A   |
| Nominal voltage U <sub>N</sub>  | 800 V   |
| Open side panel   | nein  |
| Shock protection test specification   | DIN EN 50274 (VDE 0660-514):2002-11                     |
| Back of the hand protection   | guaranteed  |
| Finger protection   | guaranteed  |
| Surge voltage test setpoint   | 9.8 kV  |
| Result of surge voltage test  | Test passed   |
| Power frequency withstand voltage setpoint                                      | 3.5 kV  |
| Result of power-frequency withstand voltage test                                | Test passed   |
| Checking the mechanical stability of terminal points (5 x conductor connection) | Test passed   |
| Bending test rotation speed   | 10 rpm  |
| Bending test turns  | 135   |
| Bending test conductor cross section/weight                                     | 0.75 mm <sup>2</sup> / 0.4 kg                           |
|   | 35 mm <sup>2</sup> / 6.8 kg                             |
| Result of bending test  | Test passed   |
| Conductor cross section tensile test  | 0.75 mm <sup>2</sup>                                    |
| Tractive force setpoint   | 30 N  |
| Conductor cross section tensile test  | 35 mm <sup>2</sup>                                      |
| Tractive force setpoint   | 190 N   |
| Tensile test result   | Test passed   |
| Tight fit on carrier  | NS 32/NS 35   |
| Setpoint  | 10 N  |
| Result of tight fit test  | Test passed   |
| Requirements, voltage drop  | ≤ 3.2 mV  |
| Result of voltage drop test   | Test passed   |

|   |                    |
|---|--------------------|
| Temperature-rise test   | Test passed        |
| Conductor cross section short circuit testing                         | 35 mm <sup>2</sup> |
| Short-time current  | 4.2 kA             |
| Short circuit stability result  | Test passed        |
| Proof of thermal characteristics (needle flame) effective duration    | 30 s               |
| Result of thermal test  | Test passed        |
| Temperature index, insulating material (DIN EN 60216-1 (VDE 0304-21)) | 115 °C             |

**Dimensions**

|                  |         |
|------------------|---------|
| Width            | 15.2 mm |
| Length           | 55 mm   |
| Height NS 35/7,5 | 51 mm   |
| Height NS 32     | 56 mm   |

**Connection data**

|  |                      |
|--|----------------------|
| Note   | Terminal point       |
| Connection in acc. with standard   | IEC 60947-7-1        |
| Connection method  | Screw connection     |
| Conductor cross section solid min.   | 0.75 mm <sup>2</sup> |
| Conductor cross section solid max.   | 35 mm <sup>2</sup>   |
| Conductor cross section AWG/kcmil min.                                     | 18                   |
| Conductor cross section AWG/kcmil max                                      | 2                    |
| Conductor cross section stranded min.                                      | 0.75 mm <sup>2</sup> |
| Conductor cross section stranded max.                                      | 35 mm <sup>2</sup>   |
| Min. AWG conductor cross section, stranded                                 | 18                   |
| Max. AWG conductor cross section, stranded                                 | 2                    |
| Conductor cross section stranded, with ferrule without plastic sleeve min. | 0.75 mm <sup>2</sup> |
| Conductor cross section stranded, with ferrule without plastic sleeve max. | 35 mm <sup>2</sup>   |
| Conductor cross section stranded, with ferrule with plastic sleeve min.    | 0.75 mm <sup>2</sup> |
| Conductor cross section stranded, with ferrule with plastic sleeve max.    | 35 mm <sup>2</sup>   |
| Cross section with insertion bridge, solid max.                            | 35 mm <sup>2</sup>   |
| Cross section with insertion bridge, stranded max.                         | 35 mm <sup>2</sup>   |
| 2 conductors with same cross section, solid min.                           | 0.75 mm <sup>2</sup> |

|   |                      |
|---|----------------------|
| 2 conductors with same cross section, solid max.  | 10 mm <sup>2</sup>   |
| 2 conductors with same cross section, stranded min.                                     | 0.75 mm <sup>2</sup> |
| 2 conductors with same cross section, stranded max.                                     | 10 mm <sup>2</sup>   |
| 2 conductors with same cross section, stranded, TWIN ferrules with plastic sleeve, min. | 0.75 mm <sup>2</sup> |
| 2 conductors with same cross section, stranded, TWIN ferrules with plastic sleeve, max. | 6 mm <sup>2</sup>    |
| 2 conductors with same cross section, stranded, ferrules without plastic sleeve, min.   | 0.75 mm <sup>2</sup> |
| 2 conductors with same cross section, stranded, ferrules without plastic sleeve, max.   | 10 mm <sup>2</sup>   |
| Cross section with insertion bridge, solid max.   | 35 mm <sup>2</sup>   |
| Cross section with insertion bridge, stranded max.                                      | 35 mm <sup>2</sup>   |
| Stripping length  | 16 mm                |
| Screw thread  | M6                   |
| Tightening torque, min  | 3.2 Nm               |
| Tightening torque max   | 3.7 Nm               |

### Certificates / Approvals



Certification GOST

Certifications applied for:

Certification Ex:

### Accessories

| Item | Designation | Description |
|------|-------------|-------------|
|------|-------------|-------------|

#### Assembly

|         |              |  |
|---------|--------------|--|
| 3022218 | CLIPFIX 35   | Quick mounting end clamp for NS 35/7,5 DIN rail or NS 35/15 DIN rail, with marking option, width: 9.5 mm, color: gray  |
| 3022276 | CLIPFIX 35-5 | Quick mounting end clamp for NS 35/7,5 DIN rail or NS 35/15 DIN rail, with marking option, with parking option for FBS...5, FBS...6, KSS 5, KSS 6, width: 5.15 mm, color: gray |

|         |                             |   |
|---------|-----------------------------|---|
| 0800886 | E/NS 35 N                   | End clamp, width: 9.5 mm, color: gray   |
| 1201442 | E/UK                        | End clamp, for assembly on NS 32 or NS 35/7.5 DIN rail  |
| 1201413 | E/UK 1                      | End clamps, for supporting the ends of double-level and three-level terminal blocks, width: 10 mm, color: gray                  |
| 1024263 | EA 11                       | Single cover, for covering one terminal block, snap fit, cannot be labeled, color: transparent                                  |
| 0801704 | NS 35/ 7,5 AL UNPERF 2000MM | DIN rail, unperforated, Width: 35 mm, Height: 7.5 mm, Length: 2000 mm, Color: silver  |
| 1206560 | NS 35/ 7,5 CAP              | DIN rail end piece, for DIN rail NS 35/7.5  |
| 0801762 | NS 35/ 7,5 CU UNPERF 2000MM | DIN rail, material: Copper, unperforated, height 7.5 mm, width 35 mm, length: 2 m   |
| 0801733 | NS 35/ 7,5 PERF 2000MM      | DIN rail, material: steel galvanized and passivated with a thick layer, perforated, height 7.5 mm, width 35 mm, length: 2000 mm |
| 0801681 | NS 35/ 7,5 UNPERF 2000MM    | DIN rail, material: Steel, unperforated, height 7.5 mm, width 35 mm, length: 2 m  |
| 1204119 | NS 35/ 7,5 WH PERF 2000MM   | DIN rail 35 mm (NS 35)  |
| 1204122 | NS 35/ 7,5 WH UNPERF 2000MM | DIN rail 35 mm (NS 35)  |
| 1206421 | NS 35/ 7,5 ZN PERF 2000MM   | DIN rail, material: Galvanized, perforated, height 7.5 mm, width 35 mm, length: 2 m   |
| 1206434 | NS 35/ 7,5 ZN UNPERF 2000MM | DIN rail, material: Galvanized, unperforated, height 7.5 mm, width 35 mm, length: 2 m   |
| 1201756 | NS 35/15 AL UNPERF 2000MM   | DIN rail, deep drawn, high profile, unperforated, 1.5 mm thick, material: aluminum, height 15 mm, width 35 mm, length 2000 mm   |
| 1206573 | NS 35/15 CAP                | DIN rail end piece, for DIN rail NS 35/15   |
| 1201895 | NS 35/15 CU UNPERF 2000MM   | DIN rail, material: Copper, unperforated, 1.5 mm thick, height 15 mm, width 35 mm, length: 2 m                                  |
| 1201730 | NS 35/15 PERF 2000MM        | DIN rail, material: steel galvanized and passivated with a thick layer, perforated, height 15 mm, width 35 mm, length: 2000 mm  |
| 1201714 | NS 35/15 UNPERF 2000MM      | DIN rail, material: Steel, unperforated, height 15 mm, width 35 mm, length: 2 m   |
| 0806602 | NS 35/15 WH PERF 2000MM     | DIN rail 35 mm (NS 35)  |
| 1204135 | NS 35/15 WH UNPERF 2000MM   | DIN rail 35 mm (NS 35)  |
| 1206599 | NS 35/15 ZN PERF 2000MM     | DIN rail, material: Galvanized, perforated, height 15 mm, width 35 mm, length: 2 m  |
| 1206586 | NS 35/15 ZN UNPERF 2000MM   | DIN rail, material: Galvanized, unperforated, height 15 mm, width 35 mm, length: 2 m  |
| 1201798 | NS 35/15-2,3 UNPERF 2000MM  | DIN rail, material: Steel, unperforated, 2.3 mm thick, height 15 mm, width 35 mm, length: 2 m                                   |
| 1302215 | TS-K                        | Separating plate, Length: 22 mm, Height: 22 mm, Color: gray   |

**Bridges**

|         |                  |   |
|---------|------------------|---|
| 0205119 | EB 2-15 K/UK 35  | Insertion bridge, Number of positions: 2, Color: gray   |
| 0205106 | EB 3-15 K/UK 35  | Insertion bridge, Number of positions: 3, Color: gray   |
| 0205135 | EB 10-15         | Insertion bridge, Number of positions: 10, Color: gray  |
| 0205096 | EB 10-15 K/UK 35 | Insertion bridge, Number of positions: 10, Color: gray  |
| 0201333 | FBI 2-15         | Fixed bridge, Number of positions: 2, Color: silver     |
| 0201278 | FBI 3-15         | Fixed bridge, Number of positions: 3, Color: silver     |
| 0711302 | FBI 5-15         | Fixed bridge, Number of positions: 5, Color: aluminum   |
| 0205232 | SBH 2-15         | Switching jumper, Number of positions: 1, Color: silver |

**Connector/Adapter**

|         |           |                                      |
|---------|-----------|--------------------------------------|
| 0311634 | PS-IH BK  | Insulating sleeve, Color: black      |
| 0311582 | PS-IH BU  | Insulating sleeve, Color: blue       |
| 0311605 | PS-IH GN  | Insulating sleeve, Color: green      |
| 0311621 | PS-IH GY  | Insulating sleeve, Color: gray       |
| 0311579 | PS-IH RD  | Insulating sleeve, Color: red        |
| 0311618 | PS-IH VT  | Insulating sleeve, Color: violet     |
| 0311566 | PS-IH WH  | Insulating sleeve, Color: white      |
| 0311595 | PS-IH YE  | Insulating sleeve, Color: yellow     |
| 0311647 | PS-MT     | Test plugs                           |
| 0205290 | PSB 6/5/6 | Female test connector, Color: silver |

**Marking**

|         |                  |   |
|---------|------------------|---|
| 1007248 | SBS10:UNBEDRUCKT | Marker cards, Card, white, unlabeled, can be labeled with: Plotter, Perforated, Mounting type: Snap into tall marker groove, Snap into flat marker groove, for terminal block width: 10 mm, Lettering field: 6 x 10.1 mm              |
| 0818069 | UC-TM 10         | Marker for terminal blocks, Sheet, white, unlabeled, can be labeled with: BLUEMARK CLED, BLUEMARK LED, Plotter, Mounting type: Snap into tall marker groove, for terminal block width: 10.2 mm, Lettering field: 9.6 x 10.5 mm        |
| 0824605 | UC-TM 10 CUS     | Marker for terminal blocks, can be ordered: by sheet, white, labeled according to customer specifications, Mounting type: Snap into tall marker groove, for terminal block width: 10.2 mm, Lettering field: 9.6 x 10.5 mm             |
| 0829142 | UCT-TM 10        | Marker for terminal blocks, Sheet, white, unlabeled, can be labeled with: THERMOMARK CARD, BLUEMARK CLED, BLUEMARK LED, Mounting type: Snap into tall marker groove, for terminal block width: 10.2 mm, Lettering field: 8.9 x 9.6 mm |

|         |                         |  |
|---------|-------------------------|--|
| 0829623 | UCT-TM 10 CUS           | Marker for terminal blocks, can be ordered: by sheet, white, labeled according to customer specifications, Mounting type: Snap into tall marker groove, for terminal block width: 10.2 mm, Lettering field: 8.9 x 9.6 mm   |
| 1004241 | WS 4-15                 | Warning label, Plate, orange, labeled: Lightning flash and warning in English, Mounting type: Screws, rivets, for terminal block width: 15 mm  |
| 1004445 | WS 5-15                 | Warning label, Plate, orange, labeled: Lightning flash and warning in English, Mounting type: Screws, rivets, for terminal block width: 15 mm  |
| 0824941 | ZB 10 CUS               | Zack marker strip, can be ordered: Strip, white, labeled according to customer specifications, Mounting type: Snap into tall marker groove, for terminal block width: 10.2 mm, Lettering field: 10.15 x 10.5 mm  |
| 1053001 | ZB 10:UNBEDRUCKT        | Zack marker strip, Strip, white, unlabeled, can be labeled with: Plotter, Mounting type: Snap into tall marker groove, for terminal block width: 10.2 mm, Lettering field: 10.5 x 10.15 mm   |
| 1053014 | ZB10,LGS:FORTL.ZAHLEN   | Zack marker strip, Strip, white, labeled, can be labeled with: Plotter, Printed horizontally: Consecutive numbers 1 - 10, 11 - 20, etc. up to 991 - 1000, Mounting type: Snap into tall marker groove, for terminal block width: 10.2 mm, Lettering field: 10.15 x 10.5 mm |
| 1053030 | ZB10,LGS:GLEICHE ZAHLEN | Zack marker strip, Strip, white, labeled, can be labeled with: Plotter, Printed horizontally: Identical numbers 1 or 2, etc. up to 100, Mounting type: Snap into tall marker groove, for terminal block width: 10.2 mm, Lettering field: 10.15 x 10.5 mm                   |
| 1053412 | ZB10,LGS:L1-N,PE        | Marker for terminal blocks, Strip, white, labeled, can be labeled with: Plotter, Horizontal: L1, L2, L3, N, PE, L1, L2, L3, N, PE, Mounting type: Snap into tall marker groove, for terminal block width: 10.2 mm, Lettering field: 10.15 x 10.5 mm                        |
| 1053438 | ZB10,LGS:U-N            | Marker for terminal blocks, Strip, white, labeled, can be labeled with: Plotter, Horizontal: U, V, W, N, GND, U, V, W, N, GND, Mounting type: Snap into tall marker groove, for terminal block width: 10.2 mm, Lettering field: 10.15 x 10.5 mm                            |
| 1053027 | ZB10,QR:FORTL.ZAHLEN    | Zack marker strip, Strip, white, labeled, can be labeled with: Plotter, Printed vertically: Consecutive numbers 1 - 10, 11 - 20, etc. up to 991 - 1000, Mounting type: Snap into tall marker groove, for terminal block width: 10.2 mm, Lettering field: 10.15 x 10.5 mm   |

**Tools**

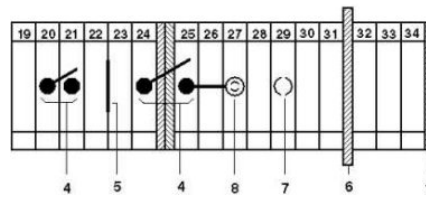
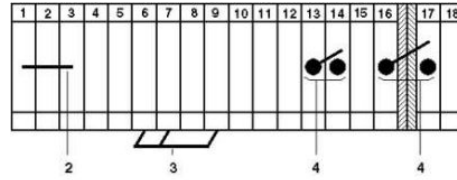
|         |                 |   |
|---------|-----------------|---|
| 1205079 | SZS 1,0X6,5 VDE | Screwdriver, slot-headed, VDE insulated, size: 1.0 x 6.5 x 150 mm, 2-component grip, with non-slip grip |
|---------|-----------------|---|

## Drawings

### Circuit diagram



- 1 = cover
- 2 = fixed bridge
- 3 = insertion bridge
- 4 = switch bar for 2 terminal blocks
- 5 = separating plate
- 6 = partition plate
- 7 = test plug socket, for test connection with test plug PS
- 8 = test plug socket, insulated, can only be used with FBI





**Address**

PHOENIX CONTACT Deutschland GmbH  
Flachmarktstr. 8  
32825 Blomberg, Germany  
Phone +49 5235 3 12000  
Fax +49 5235 3 41200  
<http://www.phoenixcontact.com>



© 2014 Phoenix Contact  
Technical modifications reserved;