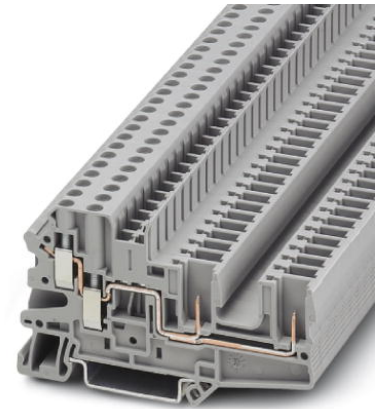



## UT 4-QUATTRO/ 2P

Order No.: 3060296

<http://catalog.phoenixcontact.net/phoenix/treeViewClick.do?UID=3060296>

Feed-through terminal block, Connection method: Screw/plug-in connection, Cross section: 0.14 mm<sup>2</sup> - 6 mm<sup>2</sup>, AWG: 26 - 10, Width: 6.2 mm, Color: gray, Mounting type: NS 35/7,5, NS 35/15

### Commercial data

EAN	 4 046356 090421
sales group	A870
Pack	50 Pcs.
Customs tariff	85369010
Gross weight in pieces	0.01647 KG
Net weight per piece	0.01619 KG
Catalog page information	Page 341 (C-3-2013)

### Product notes

WEEE/RoHS-compliant since:  
08/15/2005



<http://www.download.phoenixcontact.com>  
Please note that the data given here has been taken from the online catalog. For comprehensive information and data, please refer to the user documentation. The General Terms and Conditions of Use apply to Internet downloads.

### Technical data

#### General

Number of levels	1
Number of connections	4
Color	gray
Insulating material	PA
Inflammability class according to UL 94	V0

**General**

Maximum load current	32 A (with 6 mm <sup>2</sup> conductor cross section)
Rated surge voltage	6 kV
Pollution degree	3
Surge voltage category	III
Insulating material group	I
Connection in acc. with standard	IEC 61984
Maximum load current (lower level)	32 A
Additional text	with 6 mm <sup>2</sup> conductor cross section
Nominal current I <sub>N</sub> (lower level)	32 A
Nominal voltage U <sub>N</sub>	500 V
Open side panel	ja
Insertion/withdrawal cycles mechanical	100
Surge voltage test setpoint	7.3 kV
Result of surge voltage test	Test passed
Tight fit on carrier	NS 35
Setpoint	1 N
Result of tight fit test	Test passed
Conductor cross section short circuit testing	4 mm <sup>2</sup>
Short-time current	0.48 kA
Short circuit stability result	Test passed
Proof of thermal characteristics (needle flame) effective duration	30 s
Result of thermal test	Test passed
Test specification, oscillation, broadband noise	DIN EN 50155 (VDE 0115-200):2008-03
Test spectrum	Service life test category 1, class B, body mounted
Test frequency	f <sub>1</sub> = 5 Hz to f <sub>2</sub> = 150 Hz
ASD level	0.02 g <sup>2</sup> /Hz
Acceleration	0.8g
Test duration per axis	5 h
Test directions	X-, Y- and Z-axis
Oscillation, broadband noise test result	Test passed
Test specification, shock test	DIN EN 50155 (VDE 0115-200):2008-03
Shock form	Half-sine
Acceleration	5 g
Shock duration	30 ms

Number of shocks per direction	3
Test directions	X-, Y- and Z-axis (pos. and neg.)
Shock test result	Test passed
Temperature index, insulating material (DIN EN 60216-1 (VDE 0304-21))	130 °C
Static insulating material application in cold	-60 °C

#### Dimensions

Width	6.2 mm
Length	82.4 mm
Height NS 35/7,5	47.5 mm
Height NS 35/15	55 mm

#### Connection data

Connection in acc. with standard	IEC 61984
Connection method	Screw/plug-in connection
Conductor cross section solid min.	0.14 mm <sup>2</sup>
Conductor cross section solid max.	6 mm <sup>2</sup>
Conductor cross section AWG/kcmil min.	26
Conductor cross section AWG/kcmil max	10
Conductor cross section stranded min.	0.14 mm <sup>2</sup>
Conductor cross section stranded max.	6 mm <sup>2</sup>
Min. AWG conductor cross section, stranded	26
Max. AWG conductor cross section, stranded	10
Conductor cross section stranded, with ferrule without plastic sleeve min.	0.14 mm <sup>2</sup>
Conductor cross section stranded, with ferrule without plastic sleeve max.	4 mm <sup>2</sup>
Conductor cross section stranded, with ferrule with plastic sleeve min.	0.14 mm <sup>2</sup>
Conductor cross section stranded, with ferrule with plastic sleeve max.	4 mm <sup>2</sup>
2 conductors with same cross section, solid min.	0.14 mm <sup>2</sup>
2 conductors with same cross section, solid max.	1.5 mm <sup>2</sup>
2 conductors with same cross section, stranded min.	0.14 mm <sup>2</sup>
2 conductors with same cross section, stranded max.	1.5 mm <sup>2</sup>

2 conductors with same cross section, stranded, TWIN ferrules with plastic sleeve, min.	0.5 mm <sup>2</sup>
2 conductors with same cross section, stranded, TWIN ferrules with plastic sleeve, max.	1 mm <sup>2</sup>
2 conductors with same cross section, stranded, ferrules without plastic sleeve, min.	0.14 mm <sup>2</sup>
2 conductors with same cross section, stranded, ferrules without plastic sleeve, max.	1.5 mm <sup>2</sup>
Stripping length	9 mm
Internal cylindrical gage	A4
Screw thread	M3
Tightening torque, min	0.6 Nm
Tightening torque max	0.8 Nm

### Certificates / Approvals



Certification

CSA, cULus Recognized

Certifications applied for:

Certification Ex:

### Accessories

Item	Designation	Description
<b>Assembly</b>		
3047196	ATP-UT-QUATTRO	Partition plate, Length: 69.7 mm, Width: 2.2 mm, Height: 52.5 mm, Color: gray
3022218	CLIPFIX 35	Quick mounting end clamp for NS 35/7,5 DIN rail or NS 35/15 DIN rail, with marking option, width: 9.5 mm, color: gray
3022276	CLIPFIX 35-5	Quick mounting end clamp for NS 35/7,5 DIN rail or NS 35/15 DIN rail, with marking option, with parking option for FBS...5, FBS...6, KSS 5, KSS 6, width: 5.15 mm, color: gray
0800886	E/NS 35 N	End clamp, width: 9.5 mm, color: gray
0801704	NS 35/ 7,5 AL UNPERF 2000MM	DIN rail, unperforated, Width: 35 mm, Height: 7.5 mm, Length: 2000 mm, Color: silver
1206560	NS 35/ 7,5 CAP	DIN rail end piece, for DIN rail NS 35/7.5

0801762	NS 35/ 7,5 CU UNPERF 2000MM	DIN rail, material: Copper, unperforated, height 7.5 mm, width 35 mm, length: 2 m
0801733	NS 35/ 7,5 PERF 2000MM	DIN rail, material: steel galvanized and passivated with a thick layer, perforated, height 7.5 mm, width 35 mm, length: 2000 mm
0801681	NS 35/ 7,5 UNPERF 2000MM	DIN rail, material: Steel, unperforated, height 7.5 mm, width 35 mm, length: 2 m
1204119	NS 35/ 7,5 WH PERF 2000MM	DIN rail 35 mm (NS 35)
1204122	NS 35/ 7,5 WH UNPERF 2000MM	DIN rail 35 mm (NS 35)
1206421	NS 35/ 7,5 ZN PERF 2000MM	DIN rail, material: Galvanized, perforated, height 7.5 mm, width 35 mm, length: 2 m
1206434	NS 35/ 7,5 ZN UNPERF 2000MM	DIN rail, material: Galvanized, unperforated, height 7.5 mm, width 35 mm, length: 2 m
1201756	NS 35/15 AL UNPERF 2000MM	DIN rail, deep drawn, high profile, unperforated, 1.5 mm thick, material: aluminum, height 15 mm, width 35 mm, length 2000 mm
1206573	NS 35/15 CAP	DIN rail end piece, for DIN rail NS 35/15
1201895	NS 35/15 CU UNPERF 2000MM	DIN rail, material: Copper, unperforated, 1.5 mm thick, height 15 mm, width 35 mm, length: 2 m
1201730	NS 35/15 PERF 2000MM	DIN rail, material: steel galvanized and passivated with a thick layer, perforated, height 15 mm, width 35 mm, length: 2000 mm
1201714	NS 35/15 UNPERF 2000MM	DIN rail, material: Steel, unperforated, height 15 mm, width 35 mm, length: 2 m
0806602	NS 35/15 WH PERF 2000MM	DIN rail 35 mm (NS 35)
1204135	NS 35/15 WH UNPERF 2000MM	DIN rail 35 mm (NS 35)
1206599	NS 35/15 ZN PERF 2000MM	DIN rail, material: Galvanized, perforated, height 15 mm, width 35 mm, length: 2 m
1206586	NS 35/15 ZN UNPERF 2000MM	DIN rail, material: Galvanized, unperforated, height 15 mm, width 35 mm, length: 2 m
1201798	NS 35/15-2,3 UNPERF 2000MM	DIN rail, material: Steel, unperforated, 2.3 mm thick, height 15 mm, width 35 mm, length: 2 m

**Bridges**

3030336	FBS 2-6	Plug-in bridge, Number of positions: 2, Color: red
3030242	FBS 3-6	Plug-in bridge, Number of positions: 3, Color: red
3030255	FBS 4-6	Plug-in bridge, Number of positions: 4, Color: red
3030349	FBS 5-6	Plug-in bridge, Number of positions: 5, Color: red
3030271	FBS 10-6	Plug-in bridge, Number of positions: 10, Color: red
3030365	FBS 20-6	Plug-in bridge, Number of positions: 20, Color: red
3032224	FBS 50-6	Plug-in bridge, Number of positions: 50, Color: red
3033715	FBSR 2-6	Plug-in bridge, Number of positions: 2, Color: red
3033716	FBSR 10-6	Plug-in bridge, Number of positions: 10, Color: red

3001594	FBSR 3-6	Plug-in bridge, Number of positions: 3, Color: red
3001595	FBSR 4-6	Plug-in bridge, Number of positions: 4, Color: red
3001596	FBSR 5-6	Plug-in bridge, Number of positions: 5, Color: red

#### Connector/Adapter

0201731	MPS-IH BK	Insulating sleeve, Color: black
0201689	MPS-IH BU	Insulating sleeve, Color: blue
0201702	MPS-IH GN	Insulating sleeve, Color: green
0201728	MPS-IH GY	Insulating sleeve, Color: gray
0201676	MPS-IH RD	Insulating sleeve, Color: red
0201663	MPS-IH WH	Insulating sleeve, Color: white
0201692	MPS-IH YE	Insulating sleeve, Color: yellow
0201744	MPS-MT	Test plugs, Color: silver
3030996	PS-6	Test plugs, Color: red
3038736	PS-6/2,3MM RD	Test plugs, Color: red

#### Covers

3045648	D-UT 4-QUATTRO/ 2P	End cover, Length: 82.4 mm, Width: 2.2 mm, Color: gray
3036738	DP PS-6	Spacer plate, Color: red
3047109	DS-UT 2,5/4	Cover segment, Color: gray

#### General

3035980	PAI-4-FIX-5/6 BK	Test adapter, for 4 mm Ø safety test plugs, latches into the bridge shaft; color: Black
3035981	PAI-4-FIX-5/6 BN	Test adapter, for 4 mm Ø safety test plugs, latches into the bridge shaft; color: Brown
3035975	PAI-4-FIX-5/6 BU	Test adapter, for 4 mm Ø safety test plugs, latches into the bridge shaft; color: Blue
3035978	PAI-4-FIX-5/6 GN	Test adapter, for 4 mm Ø safety test plugs, latches into the bridge shaft; color: Green
3035982	PAI-4-FIX-5/6 GY	Test adapter, for 4 mm Ø safety test plugs, latches into the bridge shaft; color: Gray
3035974	PAI-4-FIX-5/6 OG	Test adapter, for 4 mm Ø safety test plugs, latches into the bridge shaft; color: Orange
3035976	PAI-4-FIX-5/6 RD	Test adapter, for 4 mm Ø safety test plugs, latches into the bridge shaft; color: Red
3035979	PAI-4-FIX-5/6 VT	Test adapter, for 4 mm Ø safety test plugs, latches into the bridge shaft; color: Violet
3035977	PAI-4-FIX-5/6 YE	Test adapter, for 4 mm Ø safety test plugs, latches into the bridge shaft; color: Yellow

3060335	UT 4-QUATTRO/ 2P-F	Screw flange, for screwing COMBI plugs, with the same structure and pitch as the relevant COMBI terminal blocks
<b>Marking</b>		
3040588	PC	Coding star, Length: 3 mm, Width: 3 mm, Height: 6 mm, Color: red
0818085	UC-TM 6	Marker for terminal blocks, Sheet, white, unlabeled, can be labeled with: BLUEMARK CLED, BLUEMARK LED, Plotter, Mounting type: Snap into tall marker groove, for terminal block width: 6.2 mm, Lettering field: 5.6 x 10.5 mm
0824589	UC-TM 6 CUS	Marker for terminal blocks, can be ordered: by sheet, white, labeled according to customer specifications, Mounting type: Snap into tall marker groove, for terminal block width: 6.2 mm, Lettering field: 5.6 x 10.5 mm
0828736	UCT-TM 6	Marker for terminal blocks, Sheet, white, unlabeled, can be labeled with: THERMOMARK CARD, BLUEMARK CLED, BLUEMARK LED, Mounting type: Snap into tall marker groove, for terminal block width: 6.2 mm, Lettering field: 5.6 x 10.5 mm
0829602	UCT-TM 6 CUS	Marker for terminal blocks, can be ordered: by sheet, white, labeled according to customer specifications, Mounting type: Snap into tall marker groove, for terminal block width: 6.2 mm, Lettering field: 5.6 x 10.5 mm
0811228	X-PEN 0,35	Marker pen without ink cartridge, for manual labeling of markers, labeling extremely wipe-proof, line thickness 0.35 mm
0824992	ZB 6 CUS	Zack marker strip, can be ordered: Strip, white, labeled according to customer specifications, Mounting type: Snap into tall marker groove, for terminal block width: 6.2 mm, Lettering field: 6.15 x 10.5 mm
1051016	ZB 6,LGS:FORTL.ZAHLEN	Zack marker strip, Strip, white, labeled, can be labeled with: Plotter, Printed horizontally: Consecutive numbers 1 - 10, 11 - 20, etc. up to 491 - 500, Mounting type: Snap into tall marker groove, for terminal block width: 6.2 mm, Lettering field: 6.15 x 10.5 mm
1051032	ZB 6,LGS:GLEICHE ZAHLEN	Zack marker strip, Strip, white, labeled, can be labeled with: Plotter, Printed horizontally: Identical numbers 1 or 2, etc. up to 100, Mounting type: Snap into tall marker groove, for terminal block width: 6.2 mm, Lettering field: 6.15 x 10.5 mm
1051414	ZB 6,LGS:L1-N,PE	Marker for terminal blocks, Strip, white, labeled, can be labeled with: Plotter, Horizontal: L1, L2, L3, N, PE, L1, L2, L3, N, PE, Mounting type: Snap into tall marker groove, for terminal block width: 6.2 mm, Lettering field: 6.15 x 10.5 mm
1051430	ZB 6,LGS:U-N	Marker for terminal blocks, Strip, white, labeled, can be labeled with: Plotter, Printed horizontally: U, V, W, N, GND, U, V, W, N, GND, Mounting type: Snap into tall marker groove, for terminal block width: 6.2 mm, Lettering field: 6.15 x 10.5 mm
1051029	ZB 6,QR:FORTL.ZAHLEN	Zack marker strip, Strip, white, labeled, can be labeled with: Plotter, Printed vertically: Consecutive numbers 1 - 10, 11 - 20, etc. up to 491 - 500, Mounting type: Snap into tall marker groove, for terminal block width: 6.2 mm, Lettering field: 6.15 x 10.5 mm

1051003	ZB 6:UNBEDRUCKT	Zack marker strip, Strip, white, unlabeled, can be labeled with: Plotter, Mounting type: Snap into tall marker groove, for terminal block width: 6.2 mm, Lettering field: 6.15 x 10.5 mm
---------	-----------------	--

**Tools**

1205053	SZS 0,6X3,5	Actuation tool, for ST terminal blocks, insulated, also suitable for use as a bladed screwdriver, size: 0.6 x 3.5 x 100 mm, 2-component grip, with non-slip grip
---------	-------------	--

**Additional products**

Item	Designation	Description
<b>Connector/Adapter</b>		
3060115	UP 4/ 1	Plug, Connection method: Screw connection, Number of positions: 1, Cross section: 0.2 mm <sup>2</sup> - 6 mm <sup>2</sup> , AWG: 24 - 10, Width: 6.2 mm, Height: 41.2 mm, Color: gray
3060021	UP 4/ 1-L	Plug, Connection method: Screw connection, Number of positions: 1, Cross section: 0.2 mm <sup>2</sup> - 6 mm <sup>2</sup> , AWG: 24 - 10, Width: 6.2 mm, Height: 41.2 mm, Color: gray
3060034	UP 4/ 1-L BU	Plug, Connection method: Screw connection, Number of positions: 1, Cross section: 0.2 mm <sup>2</sup> - 6 mm <sup>2</sup> , AWG: 24 - 10, Width: 6.2 mm, Height: 41.2 mm, Color: blue
3060047	UP 4/ 1-L GNYE	Plug, Connection method: Screw connection, Number of positions: 1, Cross section: 0.2 mm <sup>2</sup> - 6 mm <sup>2</sup> , AWG: 24 - 10, Width: 6.2 mm, Height: 41.2 mm, Color: green-yellow
3060050	UP 4/ 1-M	Plug, Connection method: Screw connection, Number of positions: 1, Cross section: 0.2 mm <sup>2</sup> - 6 mm <sup>2</sup> , AWG: 24 - 10, Width: 6.2 mm, Height: 41.2 mm, Color: gray
3060063	UP 4/ 1-M BU	Plug, Connection method: Screw connection, Number of positions: 1, Cross section: 0.2 mm <sup>2</sup> - 6 mm <sup>2</sup> , AWG: 24 - 10, Width: 6.2 mm, Height: 41.2 mm, Color: blue
3060076	UP 4/ 1-M GNYE	Plug, Connection method: Screw connection, Number of positions: 1, Cross section: 0.2 mm <sup>2</sup> - 6 mm <sup>2</sup> , AWG: 24 - 10, Width: 6.2 mm, Height: 41.2 mm, Color: green-yellow
3060089	UP 4/ 1-R	Plug, Connection method: Screw connection, Number of positions: 1, Cross section: 0.2 mm <sup>2</sup> - 6 mm <sup>2</sup> , AWG: 24 - 10, Width: 6.2 mm, Height: 41.2 mm, Color: gray
3060092	UP 4/ 1-R BU	Plug, Connection method: Screw connection, Number of positions: 1, Cross section: 0.2 mm <sup>2</sup> - 6 mm <sup>2</sup> , AWG: 24 - 10, Width: 6.2 mm, Height: 41.2 mm, Color: blue
3060102	UP 4/ 1-R GNYE	Plug, Connection method: Screw connection, Number of positions: 1, Cross section: 0.2 mm <sup>2</sup> - 6 mm <sup>2</sup> , AWG: 24 - 10, Width: 6.2 mm, Height: 41.2 mm, Color: green-yellow
3060128	UP 4/ 2	Plug, Connection method: Screw connection, Number of positions: 2, Cross section: 0.2 mm <sup>2</sup> - 6 mm <sup>2</sup> , AWG: 24 - 10, Width: 12.4 mm, Height: 41.2 mm, Color: gray



3060131	UP 4/ 3	Plug, Connection method: Screw connection, Number of positions: 3, Cross section: 0.2 mm <sup>2</sup> - 6 mm <sup>2</sup> , AWG: 24 - 10, Width: 18.6 mm, Height: 41.2 mm, Color: gray
3060144	UP 4/ 4	Plug, Connection method: Screw connection, Number of positions: 4, Cross section: 0.2 mm <sup>2</sup> - 6 mm <sup>2</sup> , AWG: 24 - 10, Width: 24.8 mm, Height: 41.2 mm, Color: gray
3060157	UP 4/ 5	Plug, Connection method: Screw connection, Number of positions: 5, Cross section: 0.2 mm <sup>2</sup> - 6 mm <sup>2</sup> , AWG: 24 - 10, Width: 31 mm, Height: 41.2 mm, Color: gray
3060160	UP 4/ 6	Plug, Connection method: Screw connection, Number of positions: 6, Cross section: 0.2 mm <sup>2</sup> - 6 mm <sup>2</sup> , AWG: 24 - 10, Width: 37.2 mm, Height: 41.2 mm, Color: gray
3060173	UP 4/ 7	Plug, Connection method: Screw connection, Number of positions: 7, Cross section: 0.2 mm <sup>2</sup> - 6 mm <sup>2</sup> , AWG: 24 - 10, Width: 43.4 mm, Height: 41.2 mm, Color: gray
3060186	UP 4/ 8	Plug, Connection method: Screw connection, Number of positions: 8, Cross section: 0.2 mm <sup>2</sup> - 6 mm <sup>2</sup> , AWG: 24 - 10, Width: 49.6 mm, Height: 41.2 mm, Color: gray
3060199	UP 4/ 9	Plug, Connection method: Screw connection, Number of positions: 9, Cross section: 0.2 mm <sup>2</sup> - 6 mm <sup>2</sup> , AWG: 24 - 10, Width: 55.8 mm, Height: 41.2 mm, Color: gray
3060209	UP 4/10	Plug, Connection method: Screw connection, Number of positions: 10, Cross section: 0.2 mm <sup>2</sup> - 6 mm <sup>2</sup> , AWG: 24 - 10, Width: 62 mm, Height: 41.2 mm, Color: gray
3060212	UP 4/11	Plug, Connection method: Screw connection, Number of positions: 11, Cross section: 0.2 mm <sup>2</sup> - 6 mm <sup>2</sup> , AWG: 24 - 10, Width: 68.2 mm, Height: 41.2 mm, Color: gray
3060225	UP 4/12	Plug, Connection method: Screw connection, Number of positions: 12, Cross section: 0.2 mm <sup>2</sup> - 6 mm <sup>2</sup> , AWG: 24 - 10, Width: 74.4 mm, Height: 41.2 mm, Color: gray
3060238	UP 4/13	Plug, Connection method: Screw connection, Number of positions: 13, Cross section: 0.2 mm <sup>2</sup> - 6 mm <sup>2</sup> , AWG: 24 - 10, Width: 80.6 mm, Height: 41.2 mm, Color: gray
3060241	UP 4/14	Plug, Connection method: Screw connection, Number of positions: 14, Cross section: 0.2 mm <sup>2</sup> - 6 mm <sup>2</sup> , AWG: 24 - 10, Width: 86.8 mm, Height: 41.2 mm, Color: gray
3060254	UP 4/15	Plug, Connection method: Screw connection, Number of positions: 15, Cross section: 0.2 mm <sup>2</sup> - 6 mm <sup>2</sup> , AWG: 24 - 10, Width: 93 mm, Height: 41.2 mm, Color: gray
3045800	UPBV 4/ 1	Plug, Connection method: Screw connection, Number of positions: 1, Cross section: 0.14 mm <sup>2</sup> - 6 mm <sup>2</sup> , AWG: 26 - 10, Width: 6.2 mm, Height: 48.5 mm, Color: gray
3045716	UPBV 4/ 1-L	Plug, Connection method: Screw connection, Number of positions: 1, Cross section: 0.14 mm <sup>2</sup> - 6 mm <sup>2</sup> , AWG: 26 - 10, Width: 6.2 mm, Height: 48.5 mm, Color: gray
3045729	UPBV 4/ 1-L BU	Plug, Connection method: Screw connection, Number of positions: 1, Cross section: 0.14 mm <sup>2</sup> - 6 mm <sup>2</sup> , AWG: 26 - 10, Width: 6.2 mm, Height: 48.5 mm, Color: blue

3045732	UPBV 4/ 1-L GNYE	Plug, Connection method: Screw connection, Number of positions: 1, Cross section: 0.14 mm <sup>2</sup> - 6 mm <sup>2</sup> , AWG: 26 - 10, Width: 6.2 mm, Height: 48.5 mm, Color: green-yellow
3045745	UPBV 4/ 1-M	Plug, Connection method: Screw connection, Number of positions: 1, Cross section: 0.14 mm <sup>2</sup> - 6 mm <sup>2</sup> , AWG: 26 - 10, Width: 6.2 mm, Height: 48.5 mm, Color: gray
3045758	UPBV 4/ 1-M BU	Plug, Connection method: Screw connection, Number of positions: 1, Cross section: 0.14 mm <sup>2</sup> - 6 mm <sup>2</sup> , AWG: 26 - 10, Width: 6.2 mm, Height: 48.5 mm, Color: blue
3045761	UPBV 4/ 1-M GNYE	Plug, Connection method: Screw connection, Number of positions: 1, Cross section: 0.14 mm <sup>2</sup> - 6 mm <sup>2</sup> , AWG: 26 - 10, Width: 6.2 mm, Height: 48.5 mm, Color: green-yellow
3045774	UPBV 4/ 1-R	Plug, Connection method: Screw connection, Number of positions: 1, Cross section: 0.14 mm <sup>2</sup> - 6 mm <sup>2</sup> , AWG: 26 - 10, Width: 6.2 mm, Height: 48.5 mm, Color: gray
3045787	UPBV 4/ 1-R BU	Plug, Connection method: Screw connection, Number of positions: 1, Cross section: 0.14 mm <sup>2</sup> - 6 mm <sup>2</sup> , AWG: 26 - 10, Width: 6.2 mm, Height: 48.5 mm, Color: blue
3045790	UPBV 4/ 1-R GNYE	Plug, Connection method: Screw connection, Number of positions: 1, Cross section: 0.14 mm <sup>2</sup> - 6 mm <sup>2</sup> , AWG: 26 - 10, Width: 6.2 mm, Height: 48.5 mm, Color: green-yellow
3045813	UPBV 4/ 2	Plug, Connection method: Screw connection, Number of positions: 2, Cross section: 0.14 mm <sup>2</sup> - 6 mm <sup>2</sup> , AWG: 26 - 10, Width: 12.4 mm, Height: 48.5 mm, Color: gray
3045826	UPBV 4/ 3	Plug, Connection method: Screw connection, Number of positions: 3, Cross section: 0.14 mm <sup>2</sup> - 6 mm <sup>2</sup> , AWG: 26 - 10, Width: 18.6 mm, Height: 48.5 mm, Color: gray
3045839	UPBV 4/ 4	Plug, Connection method: Screw connection, Number of positions: 4, Cross section: 0.14 mm <sup>2</sup> - 6 mm <sup>2</sup> , AWG: 26 - 10, Width: 24.8 mm, Height: 48.5 mm, Color: gray
3045842	UPBV 4/ 5	Plug, Connection method: Screw connection, Number of positions: 5, Cross section: 0.14 mm <sup>2</sup> - 6 mm <sup>2</sup> , AWG: 26 - 10, Width: 31 mm, Height: 48.5 mm, Color: gray
3045855	UPBV 4/ 6	Plug, Connection method: Screw connection, Number of positions: 6, Cross section: 0.14 mm <sup>2</sup> - 6 mm <sup>2</sup> , AWG: 26 - 10, Width: 37.2 mm, Height: 48.5 mm, Color: gray
3045868	UPBV 4/ 7	Plug, Connection method: Screw connection, Number of positions: 7, Cross section: 0.14 mm <sup>2</sup> - 6 mm <sup>2</sup> , AWG: 26 - 10, Width: 43.4 mm, Height: 48.5 mm, Color: gray
3045871	UPBV 4/ 8	Plug, Connection method: Screw connection, Number of positions: 8, Cross section: 0.14 mm <sup>2</sup> - 6 mm <sup>2</sup> , AWG: 26 - 10, Width: 49.6 mm, Height: 48.5 mm, Color: gray
3045884	UPBV 4/ 9	Plug, Connection method: Screw connection, Number of positions: 9, Cross section: 0.14 mm <sup>2</sup> - 6 mm <sup>2</sup> , AWG: 26 - 10, Width: 55.8 mm, Height: 48.5 mm, Color: gray
3045897	UPBV 4/10	Plug, Connection method: Screw connection, Number of positions: 10, Cross section: 0.14 mm <sup>2</sup> - 6 mm <sup>2</sup> , AWG: 26 - 10, Width: 62 mm, Height: 48.5 mm, Color: gray

3045907	UPBV 4/11	Plug, Connection method: Screw connection, Number of positions: 11, Cross section: 0.14 mm <sup>2</sup> - 6 mm <sup>2</sup> , AWG: 26 - 10, Width: 68.2 mm, Height: 48.5 mm, Color: gray
3045910	UPBV 4/12	Plug, Connection method: Screw connection, Number of positions: 12, Cross section: 0.14 mm <sup>2</sup> - 6 mm <sup>2</sup> , AWG: 26 - 10, Width: 74.4 mm, Height: 48.5 mm, Color: gray
3045923	UPBV 4/13	Plug, Connection method: Screw connection, Number of positions: 13, Cross section: 0.14 mm <sup>2</sup> - 6 mm <sup>2</sup> , AWG: 26 - 10, Width: 80.6 mm, Height: 48.5 mm, Color: gray
3045936	UPBV 4/14	Plug, Connection method: Screw connection, Number of positions: 14, Cross section: 0.14 mm <sup>2</sup> - 6 mm <sup>2</sup> , AWG: 26 - 10, Width: 86.8 mm, Height: 48.5 mm, Color: gray
3045949	UPBV 4/15	Plug, Connection method: Screw connection, Number of positions: 15, Cross section: 0.14 mm <sup>2</sup> - 6 mm <sup>2</sup> , AWG: 26 - 10, Width: 93 mm, Height: 48.5 mm, Color: gray

## Drawings

### Circuit diagram



**Address**

PHOENIX CONTACT Deutschland GmbH  
Flachmarktstr. 8  
32825 Blomberg, Germany  
Phone +49 5235 3 12000  
Fax +49 5235 3 41200  
<http://www.phoenixcontact.com>



© 2014 Phoenix Contact  
Technical modifications reserved;