


VS-15-ST-DSUB-EG

Order No.: 1688874

<http://catalog.phoenixcontact.net/phoenix/treeViewClick.do?UID=1688874>

D-SUB contact insert, shell size 2, with 15 signal contacts, contact type pin, with solder cup, straight, fixing with a 3 mm hole, for panel mounting frame and sleeve housing VS-15-...

Commercial data

EAN	 4 017918 823023
sales group	D501
Pack	10 Pcs.
Customs tariff	85366990
Gross weight in pieces	0.00743 KG
Net weight per piece	0.00743 KG
Catalog page information	Page 210 (C-2-2013)

Product notes

WEEE/RoHS-compliant since:
03/01/2005



<http://www.download.phoenixcontact.com>
Please note that the data given here has been taken from the online catalog. For comprehensive information and data, please refer to the user documentation. The General Terms and Conditions of Use apply to Internet downloads.

Technical data

Mechanical characteristics

Number of positions	15
Connection profile	D-SUB 15
Insertion/withdrawal cycles	≥ 200
Connection method	Solder cup
Conductor cross section	0.5 mm ²
Connection cross section AWG	20
Insertion force per signal contact	≤ 3.40 N

Ambient conditions

Ambient temperature (operation)	-55 °C ... 125 °C
---------------------------------	-------------------

Material data

Inflammability class according to UL 94	V0
Housing material	Steel, yellow chromated
Contact carrier material	Polyester GF
Contact material	Copper alloy
Contact surface material	Hard gold-plated over nickel

Electrical characteristics

Rated voltage (III/3)	125 V
Rated surge voltage	1 kV
Rated current	5 A

Certificates / Approvals



Certification GOST

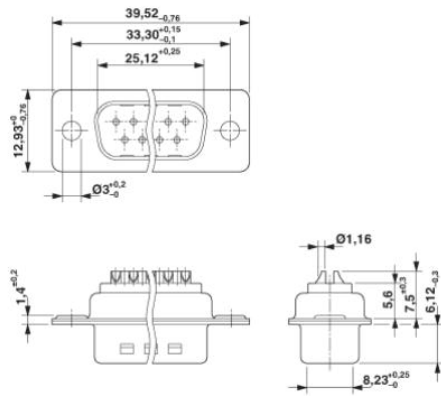
Certifications applied for:

Certification Ex:

Drawings

Dimensioned drawing

D-SUB contact insert



Address

PHOENIX CONTACT Deutschland GmbH
Flachmarktstr. 8
32825 Blomberg, Germany
Phone +49 5235 3 12000
Fax +49 5235 3 41200
<http://www.phoenixcontact.com>



© 2014 Phoenix Contact
Technical modifications reserved;