


# NEF 1- 3

Order No.: 2794110



<http://eshop.phoenixcontact.com.cn/phoenix/treeViewClick.do?UID=2794110>

Mains interference filter, with universal foot for mounting on NS 32 and NS 35/7.5, nominal current: 3 A

Commercial data	
EAN	 4 017918 072803
Pack	10 pcs.
Customs tariff	85363010
Gross weight in pieces	95.72 g
Catalog page information	Page 54 (TT-2009)

### Product notes

WEEE/RoHS-compliant since:  
2006-05-18



Please note that the data given here has been taken from the online catalog. For comprehensive information and data, please refer to the user documentation at <http://www.download.phoenixcontact.com>. The General Terms and Conditions of Use apply to Internet downloads.

## Technical data

Standards	
Housing material	PA
Inflammability class according to UL 94	V2
Color	black
Standards for air and creepage distances	IEC 60664-1
	VDE 0110-1
Degree of protection	IP20

Design	Rail-mountable module, one-piece
Mounting type	DIN rail/G-profile rail
Ambient temperature (operation)	-25 °C ... 100 °C (HMF)
Direction of action	1L-N & N-PE
Width	25 mm
Height	79.4 mm
Depth	84.15 mm

**Protective circuit**

Nominal voltage $U_N$	240 V AC
Max. operating voltage $U_{max}$	264 V AC
Arrester rated voltage $U_C$ (L-N)	264 V AC
Arrester rated voltage $U_C$ (L-PE)	264 V AC
Nominal frequency $f_N$	50 Hz
	60 Hz
Nominal current $I_N$	3 A (40°C)
Operating effective current $I_C$ at $U_C$	$\leq 0.25$ mA
Ground conductor current $I_{PE}$	$\leq 0.5$ mA
Inductivity in series	2x 2.7 mH (in acc. with VDE 0565-2 with current compensation)
Capacity (L-N)	2x 100 nF (X2)
Capacity (L-PE)	2x 2.2 nF (Y2)
Max. required back-up fuse	3 A (gL)
Input attenuation aE, sym.	$\geq 55$ dB (50 $\Omega$ / 1 MHz)
Input attenuation aE, asym.	$\geq 35$ dB (50 $\Omega$ / 1 MHz)

**Non-heating apparatus connection, power supply**

Connection method	Screw connection
Connection type IN	Screw terminal blocks
Connection type OUT	Screw terminal blocks
Screw thread	M3
Tightening torque	0.8 Nm
Stripping length	8 mm
Conductor cross section stranded min.	0.2 mm <sup>2</sup>
Conductor cross section stranded max.	2.5 mm <sup>2</sup>
Conductor cross section solid min.	0.2 mm <sup>2</sup>
Conductor cross section solid max.	4 mm <sup>2</sup>

Conductor cross section AWG/kcmil min.	24
Conductor cross section AWG/kcmil max	12

**Connection, protective circuit**

Standards/regulations	IEC 60939-2
	DIN EN 60939-2

**Protective circuit, filter**

Discharge resistor	1 MΩ
--------------------	------

**Certificates**



Certification

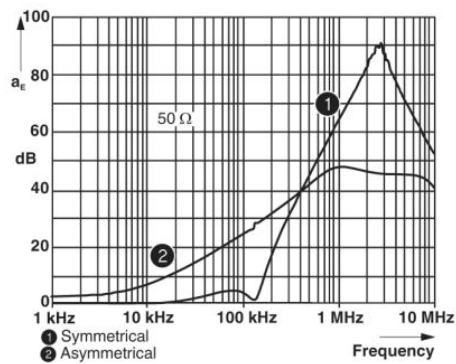
GOST, UL Recognized, VDE Zeichengenehmigung, GL

Certifications applied for:

Certification Ex:

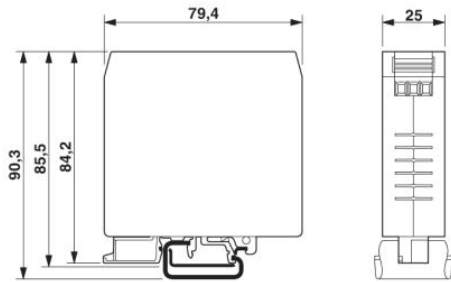
**Drawings**

Diagram



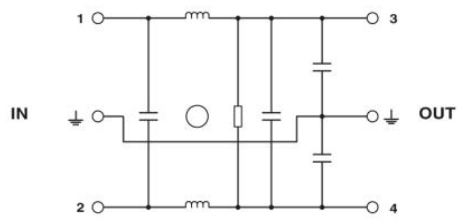
Dimensioned drawing

---



Circuit diagram

---



NEF 1- 3 Order No.: 2794110

<http://eshop.phoenixcontact.com.cn/phoenix/treeViewClick.do?UID=2794110>

---

**Address**

Phoenix Contact China  
No. 36 Phoenix Road - Jiangning Development Zone  
211100 Nanjing, China  
Phone 86-25-52121888  
Fax 86-25-52121555  
<http://www.phoenixcontact.com.cn>

PHOENIX CONTACT Middle East FZ LLC  
Technical modifications reserved;