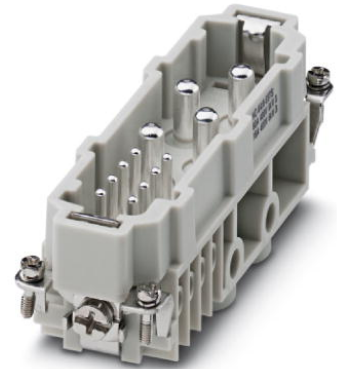


## HC-K 4/8-ESTS

Order No.: 1679333



<http://eshop.phoenixcontact.de/phoenix/treeViewClick.do?UID=1679333>

HEAVYCON male insert, K4/8 series, for 4 power and 8 control contacts, screw connection without wire protection

### Commercial data

EAN	4017918163570
Pack	1 pcs.
Customs tariff	85366990
Weight/Piece	0.1473 KG
Catalog page information	Page 446 (PC-2009)

### Product notes

WEEE/RoHS-compliant since:  
07/06/2006



<http://www.download.phoenixcontact.com>  
Please note that the data given here has been taken from the online catalog. For comprehensive information and data, please refer to the user documentation. The General Terms and Conditions of Use apply to Internet downloads.

### Technical data

#### General data

Note	For housing HC-B24
Connection method	Screw connection (power contacts)
	Screw connection (control contacts)
Tightening torque	2 Nm (3 Nm (4 mm <sup>2</sup> ... 16 mm <sup>2</sup> ))
	0.5 Nm (control contacts)

Ambient temperature (operation)	-40 °C ... 125 °C
Pollution degree	3
Surge voltage category	III
Insertion/withdrawal cycles	≥ 500
Design	K4/8
Conductor cross section	1.5 mm <sup>2</sup> ... 16 mm <sup>2</sup> (power contacts)
	0.5 mm <sup>2</sup> ... 2.5 mm <sup>2</sup> (control contacts)
Connection cross section AWG	16 ... 6 (power contacts)
	20 ... 14 (control contacts)
Stripping length of the individual wire	14 mm (Power contact)
	7 mm (control contact)
Assembly instructions	Plug-in connections may only be operated only when there is no load/voltage.

**Material data**

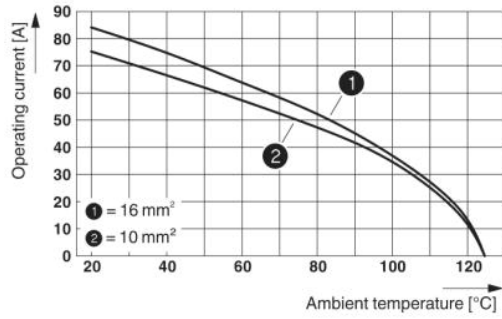
Inflammability class acc. to UL 94	HB
Contact material	Cu alloy
Material of contact surface, power contact	Ag
Material of contact surface, control contact	Ag
Contact carrier material	PA

**Electrical characteristics**

Rated voltage (III/3)	400 V (power contacts)
	400 V (control contacts)
Rated surge voltage	6 kV (power contacts)
	6 kV (control contacts)
Rated current	80 A (power contacts)
	16 A (control contacts)

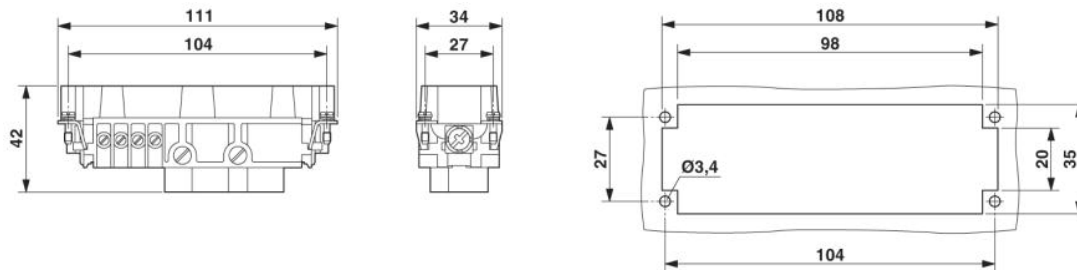
## Drawings

### Diagram



Derating diagram

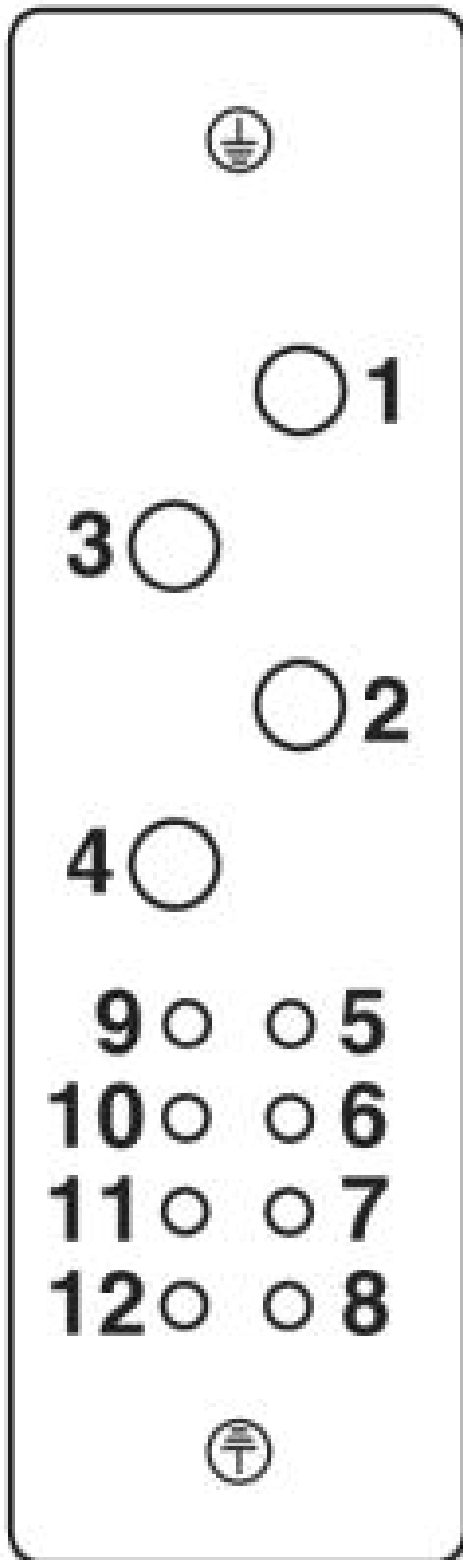
### Dimensioned drawing



Panel cutout

Schematic diagram

---



**Address**

PHOENIX CONTACT GmbH & Co. KG  
Flachsmarktstr. 8  
32825 Blomberg, Germany  
Phone +49 5235 3 00  
Fax +49 5235 3 41200  
<http://www.phoenixcontact.com>



© 2009 Phoenix Contact  
Technical modifications reserved;