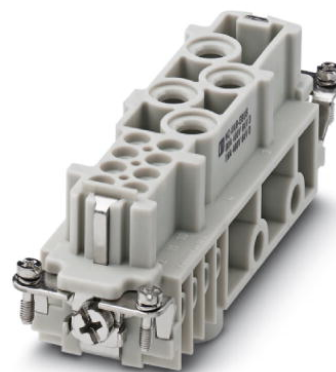


HC-K 4/8-EBUS

Order No.: 1679320



<http://eshop.phoenixcontact.de/phoenix/treeViewClick.do?UID=1679320>

HEAVYCON female insert, K4/8 series, for 4 power and 8 control contacts, screw connection without wire protection

Commercial data	
EAN	4017918163563
Pack	1 pcs.
Customs tariff	85366990
Weight/Piece	0.1485 KG
Catalog page information	Page 446 (PC-2009)

Product notes

WEEE/RoHS-compliant since:
08/16/2006



<http://www.download.phoenixcontact.com>
Please note that the data given here has been taken from the online catalog. For comprehensive information and data, please refer to the user documentation. The General Terms and Conditions of Use apply to Internet downloads.

Technical data

General data	
Note	For housing HC-B24
Connection method	Screw connection (power contacts)
	Screw connection (control contacts)

Tightening torque	2 Nm (1.5 mm ² - 2.5 mm ²)
	3 Nm (4 - 16 mm ²)
	0.5 Nm (control contacts)
Ambient temperature (operation)	-40 °C ... 125 °C
Pollution degree	3
Surge voltage category	III
Insertion/withdrawal cycles	≥ 500
Design	K4/8
Conductor cross section	1.5 mm ² ... 16 mm ² (power contacts)
	0.5 mm ² ... 2.5 mm ² (control contacts)
Connection cross section AWG	16 ... 6 (power contacts)
	20 ... 14 (control contacts)
Stripping length of the individual wire	14 mm
	7 mm
Assembly instructions	Plug-in connections may only be operated only when there is no load/voltage.

Material data

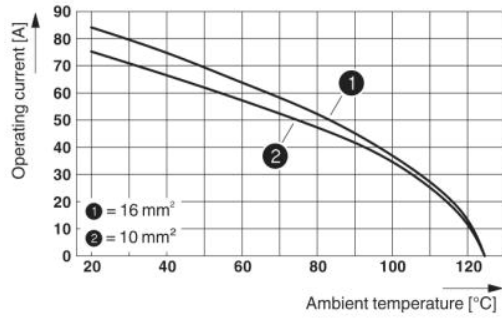
Inflammability class acc. to UL 94	HB
Contact material	Cu alloy
Material of contact surface, power contact	Ag
Material of contact surface, control contact	Ag
Contact carrier material	PA

Electrical characteristics

Rated voltage (III/3)	400 V (power contacts)
	400 V (control contacts)
Rated surge voltage	6 kV (power contacts)
	6 kV (control contacts)
Rated current	80 A (power contacts)
	16 A (control contacts)

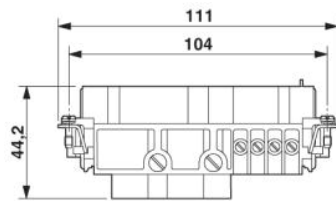
Drawings

Diagram

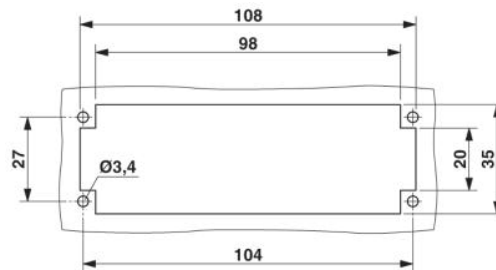
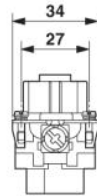


Derating diagram

Dimensioned drawing

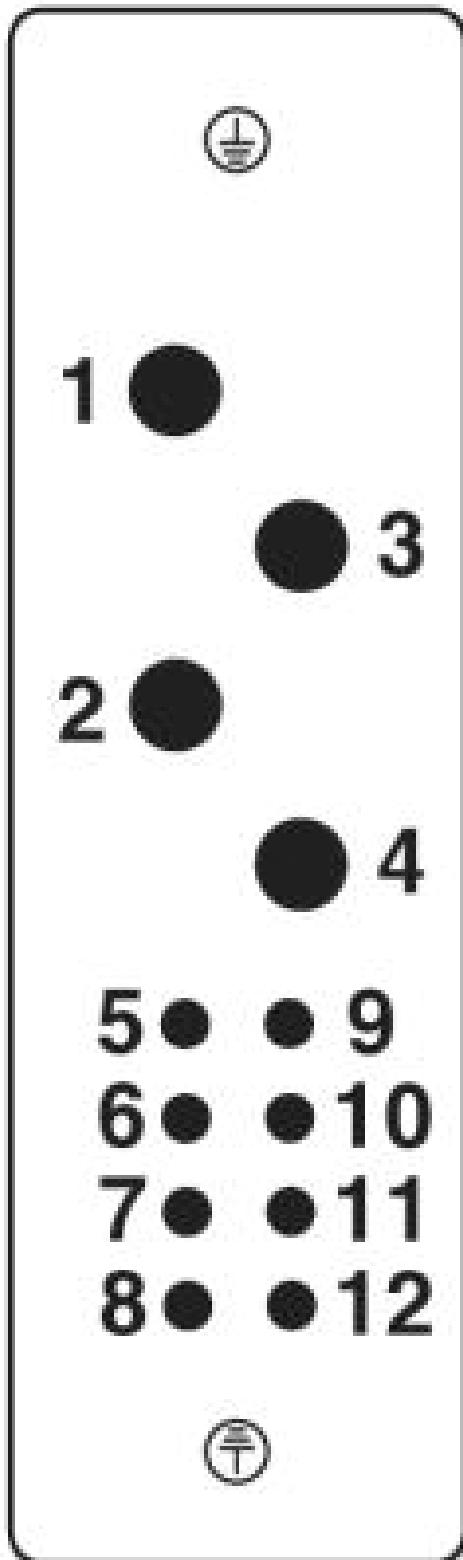


Female insert



Panel cutout

Schematic diagram



Address

PHOENIX CONTACT GmbH & Co. KG
Flachsmarktstr. 8
32825 Blomberg, Germany
Phone +49 5235 3 00
Fax +49 5235 3 41200
<http://www.phoenixcontact.com>



© 2009 Phoenix Contact
Technical modifications reserved;