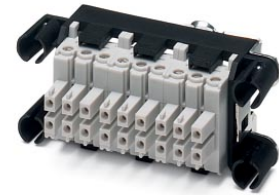


## VC-TR2/3M-PEA-S666-SET

Order No.: 1607202



<http://eshop.phoenixcontact.de/phoenix/treeViewClick.do?UID=1607202>

Contact insert set for sleeve side, sleeve frame with PE, 4 fixing screws, 6-pos. contact inserts preassembled, 6 coding profiles

### Commercial data

EAN	4017918940966
Pack	5 pcs.
Customs tariff	85366990
Weight/Piece	0.03561 KG
Catalog page information	Page 351 (PC-2009)

### Product notes

WEEE/RoHS-compliant since:  
12/15/2006



<http://www.download.phoenixcontact.com>  
Please note that the data given here has been taken from the online catalog. For comprehensive information and data, please refer to the user documentation. The General Terms and Conditions of Use apply to Internet downloads.

### Technical data

#### General data

Connection method	Screw connection
	Screw connection
Tightening torque	0.22 Nm ... 0.25 Nm
Ambient temperature (operation)	-40 °C ... 100 °C
Pollution degree	3

Surge voltage category	III
Design	VC2
Conductor cross section solid min.	0.14 mm <sup>2</sup>
Conductor cross section solid max.	1.5 mm <sup>2</sup>
Conductor cross section stranded min.	0.14 mm <sup>2</sup>
Conductor cross section stranded max.	0.75 mm <sup>2</sup>
Conductor cross section	0.14 mm <sup>2</sup> ... 1.5 mm <sup>2</sup>

#### Material data

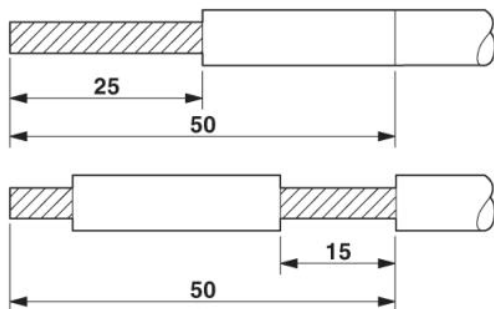
Inflammability class acc. to UL 94	V0
Contact material	CuZn
Contact surface material	Tin-plated
Contact carrier material	PA

#### Electrical characteristics

Rated voltage (III/3)	250 V
Nominal voltage $U_N$	250 V
Rated surge voltage	4 kV
	4 kV
Rated current	10 A
	10 A
Nominal current $I_N$	10 A

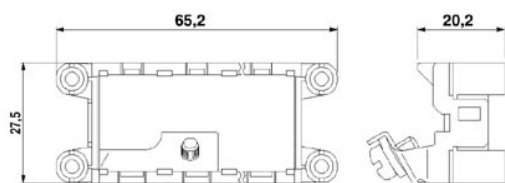
#### Drawings

##### Functional drawing



Dimensioned drawing

---



**Address**

PHOENIX CONTACT GmbH & Co. KG  
Flachmarktstr. 8  
32825 Blomberg, Germany  
Phone +49 5235 3 00  
Fax +49 5235 3 41200  
<http://www.phoenixcontact.com>



© 2009 Phoenix Contact  
Technical modifications reserved;