

SACC-DSIV-FSD-4CON-L180 SCOTHR

Order No.: 1542648

<http://eshop.phoenixcontact.de/phoenix/treeViewClick.do?UID=1542648>

Bus system flush-type socket, ETHERNET, 4-pos., M12 SPEEDCON, D-coded, rear/screw mounting with M12 thread, with polarity protection, with straight THR solder connection

**Ethernet****Product notes**

WEEE/RoHS-compliant since:
05/01/2006



Commercial data	
EAN	4046356097918
Pack	60 pcs.
Customs tariff	85366990
Weight/Piece	0.01071 KG
Catalog page information	Page 32 (PC-2009)

<http://www.download.phoenixcontact.com>
Please note that the data given here has been taken from the online catalog. For comprehensive information and data, please refer to the user documentation. The General Terms and Conditions of Use apply to Internet downloads.

Technical data**General data**

Nominal current I_N	4 A
Nominal voltage U_N	250 V
Number of positions	4
Volume resistance	$\leq 3 \text{ m}\Omega$

Insulation resistance	≥ 100 MΩ
Ambient temperature (operation)	-25 °C ... 85 °C

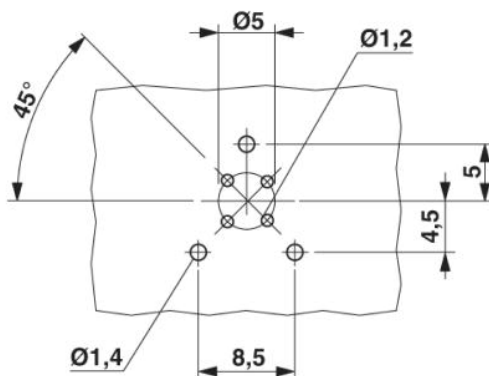
General characteristics

Coding	D - data
Inflammability class acc. to UL 94	HB
Surge voltage category	II
Pollution degree	3
Degree of protection	IP67
Contact material	CuZn
Contact surface material	Au
Contact carrier material	PA 66
Material, knurls	Zinc die-cast, (nickel-plated)
Sealing material	FKM / EPDM
Mounting type	Rear mounting, M12 x 1 screw thread with counter nut
Type of connection	THR solder connection
Status display	No

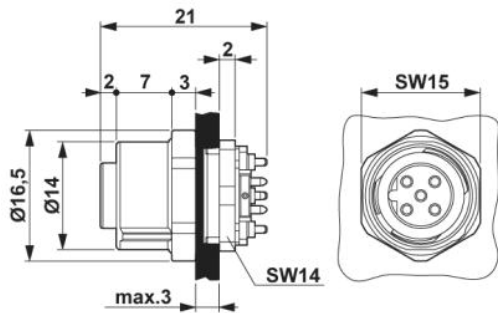
Drawings

Drilling diagram

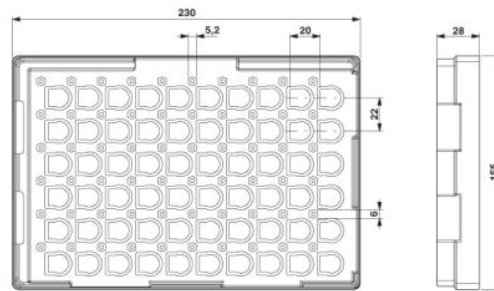
M12 flush-type connector



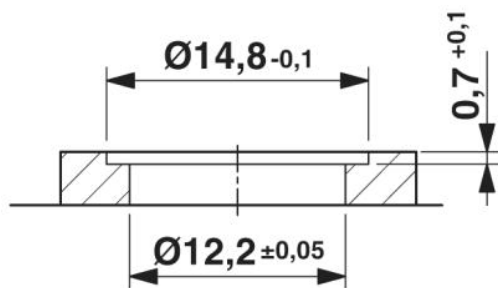
Dimensioned drawing



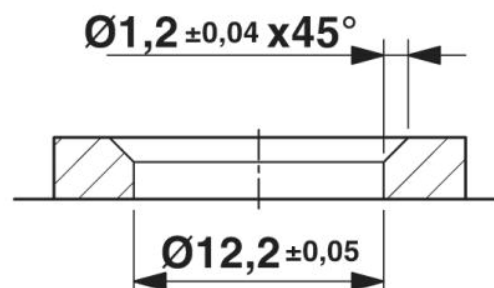
M12 flush-type connector



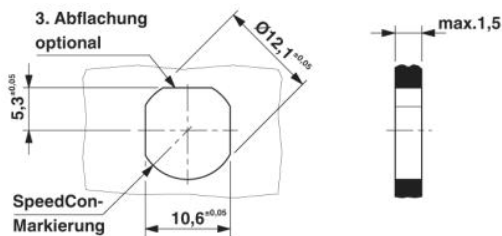
THR tray packaging



Housing cut-out for two-part M12 flush-type connectors with THR and wave soldering connection, version 1

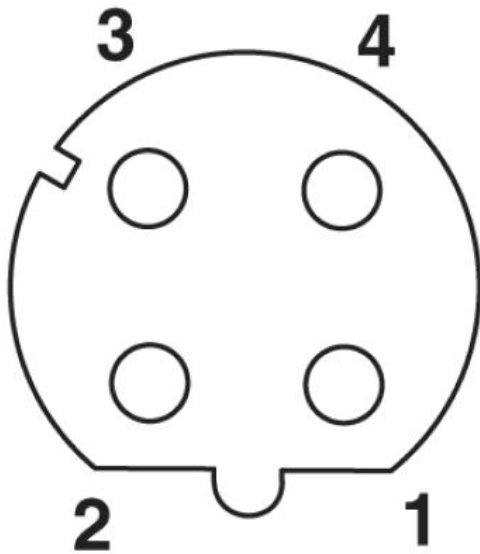


Housing cut-out for two-part M12 flush-type connectors with THR and wave soldering connection, version 2



Housing cutout for M12 fastening thread, mounting panel with feed-through hole (alternative with surface as protection against rotation)

Schematic diagram



Pin assignment M12 female connector, 4-pos., D-coded, female side

Address

PHOENIX CONTACT GmbH & Co. KG
Flachmarktstr. 8
32825 Blomberg, Germany
Phone +49 5235 3 00
Fax +49 5235 3 41200
<http://www.phoenixcontact.com>



© 2009 Phoenix Contact
Technical modifications reserved;