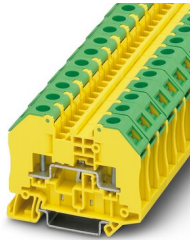


RT 3-PE - Bolt connection terminal block

3049411

<https://www.phoenixcontact.com/in/products/3049411>

Please be informed that the data shown in this PDF document is generated from our Online Catalog. Please find the complete data in the user documentation. Our General Terms of Use for Downloads are valid.



Ground terminal block with bolt connection, cross section 0.1 - 2.5 mm², AWG: 26 - 14, width 12.3 mm, color: Green-yellow

Your advantages

- Additional labeling options
- Corrosion-free terminal points
- Low contact resistance
- Green-yellow housing
- Tested for railway applications

Commercial Data

Item number	3049411
Packing unit	50 pc
Minimum order quantity	50 pc
Sales Key	BE4
Product Key	BE4313
Catalog Page	Page 379 (C-1-2019)
GTIN	4046356140164
Weight per Piece (including packing)	29.92 g
Weight per Piece (excluding packing)	27.7 g
Customs tariff number	85369010
Country of origin	CN

RT 3-PE - Bolt connection terminal block



3049411

<https://www.phoenixcontact.com/in/products/3049411>

Technical Data

Notes

General	Note: the BE-RT... path extension is to be used for non-insulated cable lugs (see accessories).
---------	---

Product properties

Product type	Bolt connection terminal block
Area of application	Railway industry
	Machine building
	Plant engineering
	Process industry
Number of connections	2
Number of rows	1
Potentials	1

Insulation characteristics

Overvoltage category	III
Degree of pollution	3

Electrical properties

Rated surge voltage	8 kV
Maximum power dissipation for nominal condition	0.77 W

Connection data

Grounding foot	Yes
Number of connections per level	2
Nominal cross section	2.5 mm ²

1 level

Stripping length	The stripping length depends on the specification provided by the cable lug manufacturer.
Connection in acc. with standard	IEC 60947-7-2
Nominal current	24 A
Maximum load current	24 A (with a 2.5 mm ² conductor cross section)
Nominal voltage	1000 V
Nominal cross section	2.5 mm ²

Cable lug connection DIN 46234:1980-03

Connection in acc. with standard	DIN 46234:1980-03
Cross section	0.5 mm ² ... 2.5 mm ²
Cross section range AWG	20 ... 14 (converted acc. to IEC)
Hole diameter	3.2 mm
Width	6 mm
Bolt diameter	3 mm

RT 3-PE - Bolt connection terminal block



3049411

<https://www.phoenixcontact.com/in/products/3049411>

Screw thread	M3
Tightening torque	0.6 ... 0.8 Nm
Connection in acc. with standard	DIN 46237:1970-07
Cross section	1 mm ² ... 2.5 mm ²
Cross section range AWG	18 ... 14 (converted acc. to IEC)
Hole diameter	3.2 mm
Width	6 mm
Bolt diameter	3 mm
Identification color of ring cable lugs : red	1 mm ²
Identification color of ring cable lugs : blue	2.5 mm ²

Ex data

Rated data (ATEX/IECEx)

Identification	□ II 2 G Ex eb IIC Gb
Operating temperature range	-60 °C ... 110 °C
Ex-certified accessories	3049097 D-RT 3/5
	0706647 TPNS-UK
	3049819 BE-RT 3/5
	1205053 SZS 0,6X3,5
	3022276 CLIPFIX 35-5
output	(Permanent)

Ex connection data General

Torque range	0.6 Nm ... 0.8 Nm
Nominal cross section	2.5 mm ²
Rated cross section AWG	14
Connection capacity rigid	0.1 mm ² ... 2.5 mm ²
Connection capacity AWG	26 ... 14
Connection capacity flexible	0.1 mm ² ... 2.5 mm ²
Connection capacity AWG	26 ... 14

Dimensions

Width	12.3 mm
End cover width	2.2 mm
Height NS 35/15	58.5 mm
Height NS 35/7,5	51 mm
Length	66 mm

Material specifications

Color	green-yellow
Flammability rating according to UL 94	V0
Insulating material group	I
Insulating material	PA
Static insulating material application in cold	-60 °C

RT 3-PE - Bolt connection terminal block



3049411

<https://www.phoenixcontact.com/in/products/3049411>

Temperature index of insulation material (DIN EN 60216-1 (VDE 0304-21))	130 °C
Relative insulation material temperature index (Elec., UL 746 B)	130 °C
Fire protection for rail vehicles (DIN EN 45545-2) R22	HL 1 - HL 3
Fire protection for rail vehicles (DIN EN 45545-2) R23	HL 1 - HL 3
Fire protection for rail vehicles (DIN EN 45545-2) R24	HL 1 - HL 3
Fire protection for rail vehicles (DIN EN 45545-2) R26	HL 1 - HL 3
Calorimetric heat release NFPA 130 (ASTM E 1354)	28 MJ/kg
Surface flammability NFPA 130 (ASTM E 162)	passed
Specific optical density of smoke NFPA 130 (ASTM E 662)	passed
Smoke gas toxicity NFPA 130 (SMP 800C)	passed

Mechanical properties

Mechanical data

Open side panel	Yes
-----------------	-----

Environmental and real-life conditions

Oscillation/broadband noise

Specification	DIN EN 50155 (VDE 0115-200):2008-03
Spectrum	Service life test category 1, class B, body mounted
Frequency	$f_1 = 5 \text{ Hz}$ to $f_2 = 150 \text{ Hz}$
ASD level	0.02g ² /Hz
Acceleration	0.8g
Test duration per axis	5 h
Test directions	X-, Y- and Z-axis
Result	Test passed

Shocks

Specification	DIN EN 50155 (VDE 0115-200):2008-03
Pulse shape	Half-sine
Acceleration	5g
Shock duration	30 ms
Number of shocks per direction	3
Test directions	X-, Y- and Z-axis (pos. and neg.)
Result	Test passed

Ambient conditions

Ambient temperature (operation)	-60 °C ... 105 °C (max. short-term operating temperature RTI Elec.)
Ambient temperature (storage/transport)	-25 °C ... 60 °C (for a short time, not exceeding 24 h, -60 °C to +70 °C)
Ambient temperature (assembly)	-5 °C ... 70 °C
Ambient temperature (actuation)	-5 °C ... 70 °C
Permissible humidity (storage/transport)	30 % ... 70 %

RT 3-PE - Bolt connection terminal block



3049411

<https://www.phoenixcontact.com/in/products/3049411>

Standards and regulations

Connection in acc. with standard	IEC 60947-7-2
----------------------------------	---------------

Mounting

Mounting type	NS 35/7,5
	NS 35/15

RT 3-PE - Bolt connection terminal block

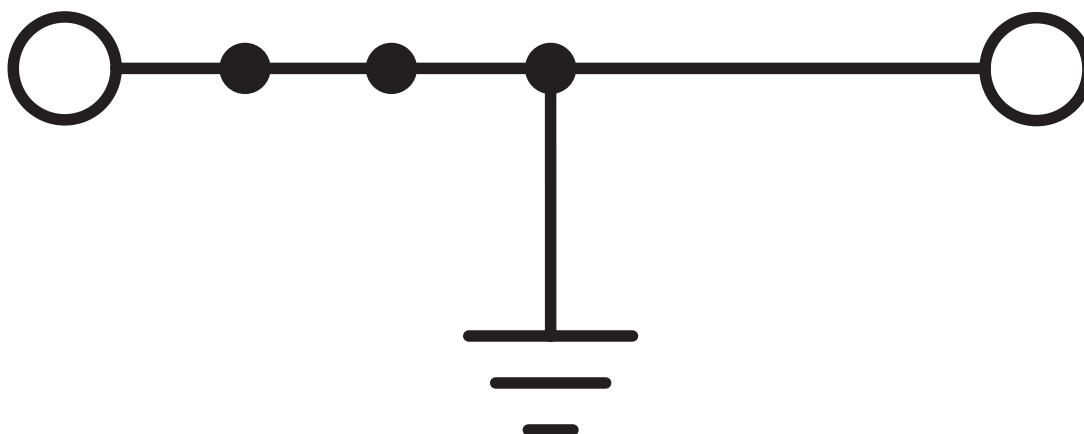


3049411

<https://www.phoenixcontact.com/in/products/3049411>

Drawings

Circuit diagram



RT 3-PE - Bolt connection terminal block



3049411

<https://www.phoenixcontact.com/in/products/3049411>

Approvals



IECEE CB Scheme

Approval ID: DE1-62981



VDE Zeichengenehmigung

Approval ID: 40022551

	Nominal Voltage U_N	Nominal Current I_N	Cross Section AWG	Cross Section mm^2
	-	-	-	0.14 - 2.5



cULus Recognized

Approval ID: E60425



EAC Ex

Approval ID: RU C-DE.HA91.B.00066



IECEx

Approval ID: IECExPTB08.0063U

	Nominal Voltage U_N	Nominal Current I_N	Cross Section AWG	Cross Section mm^2
	-	-	-	0.1 - 2.5



ATEX

Approval ID: PTB09ATEX1003U

	Nominal Voltage U_N	Nominal Current I_N	Cross Section AWG	Cross Section mm^2
	-	-	-	0.1 - 2.5



CCC

Approval ID: 2020322313000627



NEPSI

Approval ID: GYJ20.1202U



UKCA-EX

Approval ID: CSAFE 22UKEX1085U

RT 3-PE - Bolt connection terminal block



3049411

<https://www.phoenixcontact.com/in/products/3049411>

Classifications

ECLASS

ECLASS-11.0

27141120

ETIM

ETIM 8.0

EC000897

UNSPSC

UNSPSC 21.0

39121400

RT 3-PE - Bolt connection terminal block



3049411

<https://www.phoenixcontact.com/in/products/3049411>

Environmental Product Compliance

China RoHS	Environmentally friendly use period: unlimited = EFUP-e
	No hazardous substances above threshold values

RT 3-PE - Bolt connection terminal block

3049411

<https://www.phoenixcontact.com/in/products/3049411>

Accessories



Note: Applying some accessories below might limit this product.

FBS 2-6 - Plug-in bridge

3030336

<https://www.phoenixcontact.com/in/products/3030336>



Plug-in bridge, pitch: 6.2 mm, number of positions: 2, color: red

FBS 3-6 - Plug-in bridge

3030242

<https://www.phoenixcontact.com/in/products/3030242>



Plug-in bridge, pitch: 6.2 mm, number of positions: 3, color: red

RT 3-PE - Bolt connection terminal block

3049411

<https://www.phoenixcontact.com/in/products/3049411>

FBS 4-6 - Plug-in bridge

3030255

<https://www.phoenixcontact.com/in/products/3030255>



Plug-in bridge, pitch: 6.2 mm, number of positions: 4, color: red

FBS 5-6 - Plug-in bridge

3030349

<https://www.phoenixcontact.com/in/products/3030349>



Plug-in bridge, pitch: 6.2 mm, number of positions: 5, color: red

RT 3-PE - Bolt connection terminal block

3049411

<https://www.phoenixcontact.com/in/products/3049411>

FBS 6-6 - Plug-in bridge

1008238

<https://www.phoenixcontact.com/in/products/1008238>



Plug-in bridge, One side not fully isolated, pitch: 6.2 mm, number of positions: 6, color: red

FBS 10-6 - Plug-in bridge

3030271

<https://www.phoenixcontact.com/in/products/3030271>



Plug-in bridge, pitch: 6.2 mm, number of positions: 10, color: red

RT 3-PE - Bolt connection terminal block

3049411

<https://www.phoenixcontact.com/in/products/3049411>

FBS 20-6 - Plug-in bridge

3030365

<https://www.phoenixcontact.com/in/products/3030365>



Plug-in bridge, pitch: 6.2 mm, number of positions: 20, color: red

FBS 50-6 - Plug-in bridge

3032224

<https://www.phoenixcontact.com/in/products/3032224>



Plug-in bridge, pitch: 6.2 mm, number of positions: 50, color: red

RT 3-PE - Bolt connection terminal block



3049411

<https://www.phoenixcontact.com/in/products/3049411>

FBSR 2-6 - Plug-in bridge

3033715

<https://www.phoenixcontact.com/in/products/3033715>



Plug-in bridge, pitch: 6.2 mm, number of positions: 2, color: red

FBSR 3-6 - Plug-in bridge

3001594

<https://www.phoenixcontact.com/in/products/3001594>



Plug-in bridge, pitch: 6.2 mm, number of positions: 3, color: red

RT 3-PE - Bolt connection terminal block



3049411

<https://www.phoenixcontact.com/in/products/3049411>

FBSR 4-6 - Plug-in bridge

3001595

<https://www.phoenixcontact.com/in/products/3001595>



Plug-in bridge, pitch: 6.2 mm, number of positions: 4, color: red

FBSR 5-6 - Plug-in bridge

3001596

<https://www.phoenixcontact.com/in/products/3001596>



Plug-in bridge, pitch: 6.2 mm, number of positions: 5, color: red

RT 3-PE - Bolt connection terminal block



3049411

<https://www.phoenixcontact.com/in/products/3049411>

FBSR 10-6 - Plug-in bridge

3033716

<https://www.phoenixcontact.com/in/products/3033716>

Plug-in bridge, pitch: 6.2 mm, number of positions: 10, color: red



FBSRH 2-6 - Short-circuit connector

3033812

<https://www.phoenixcontact.com/in/products/3033812>

Short-circuit connector, pitch: 6.2 mm, number of positions: 2, color: red



RT 3-PE - Bolt connection terminal block



3049411

<https://www.phoenixcontact.com/in/products/3049411>

SB-ME 2-6 - Switching jumper

3035755

<https://www.phoenixcontact.com/in/products/3035755>



Switching jumper, pitch: 6.2 mm, number of positions: 2, length: 21 mm, color: gray/orange

FBS 2-6 BU - Plug-in bridge

3036932

<https://www.phoenixcontact.com/in/products/3036932>



Plug-in bridge, pitch: 6.2 mm, number of positions: 2, color: blue

RT 3-PE - Bolt connection terminal block

3049411

<https://www.phoenixcontact.com/in/products/3049411>

FBS 3-6 BU - Plug-in bridge

3036945

<https://www.phoenixcontact.com/in/products/3036945>



Plug-in bridge, pitch: 6.2 mm, number of positions: 3, color: blue

FBS 4-6 BU - Plug-in bridge

3036958

<https://www.phoenixcontact.com/in/products/3036958>



Plug-in bridge, pitch: 6.2 mm, number of positions: 4, color: blue

RT 3-PE - Bolt connection terminal block

3049411

<https://www.phoenixcontact.com/in/products/3049411>

FBS 5-6 BU - Plug-in bridge

3036961

<https://www.phoenixcontact.com/in/products/3036961>



Plug-in bridge, pitch: 6.2 mm, number of positions: 5, color: blue

FBS 10-6 BU - Plug-in bridge

3032198

<https://www.phoenixcontact.com/in/products/3032198>



Plug-in bridge, pitch: 6.2 mm, number of positions: 10, color: blue

RT 3-PE - Bolt connection terminal block

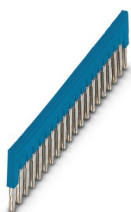
3049411

<https://www.phoenixcontact.com/in/products/3049411>

FBS 20-6 BU - Plug-in bridge

3032208

<https://www.phoenixcontact.com/in/products/3032208>



Plug-in bridge, pitch: 6.2 mm, number of positions: 20, color: blue

FBS 50-6 BU - Plug-in bridge

3032211

<https://www.phoenixcontact.com/in/products/3032211>



Plug-in bridge, pitch: 6.2 mm, number of positions: 50, color: blue

RT 3-PE - Bolt connection terminal block



3049411

<https://www.phoenixcontact.com/in/products/3049411>


RB ST 10-(2,5/4) - Reducing bridge

3030873

<https://www.phoenixcontact.com/in/products/3030873>



Reducing bridge, pitch: 10 mm, number of positions: 2, length: 36 mm, color: red

 Max. current carrying capacity: 35 A

D-RT 3/5 - End cover

3049097

<https://www.phoenixcontact.com/in/products/3049097>

End cover, length: 65 mm, width: 2.2 mm, height: 50.4 mm, color: gray



RT 3-PE - Bolt connection terminal block

3049411

<https://www.phoenixcontact.com/in/products/3049411>



SZS 0,6X3,5 - Screwdriver

1205053

<https://www.phoenixcontact.com/in/products/1205053>



Actuation tool, for ST terminal blocks, insulated, also suitable for use as a bladed screwdriver, size: 0.6 x 3.5 x 100 mm, 2-component grip, with non-slip grip

TPNS-UK - Partition plate

0706647

<https://www.phoenixcontact.com/in/products/0706647>



Partition plate, length: 80 mm, width: 2 mm, height: 70 mm, color: gray

RT 3-PE - Bolt connection terminal block



3049411

<https://www.phoenixcontact.com/in/products/3049411>

BE-RT 3/5 - Path extension

3049819

<https://www.phoenixcontact.com/in/products/3049819>



Path extension, color: gray

NS 35/ 7,5 PERF 2000MM - DIN rail perforated

0801733

<https://www.phoenixcontact.com/in/products/0801733>



DIN rail perforated, acc. to EN 60715, material: Steel, galvanized, passivated with a thick layer, Standard profile, color: silver, Pack of 25 (50 m)

RT 3-PE - Bolt connection terminal block



3049411

<https://www.phoenixcontact.com/in/products/3049411>

NS 35/ 7,5 UNPERF 2000MM - DIN rail, unperforated

0801681

<https://www.phoenixcontact.com/in/products/0801681>



DIN rail, unperforated, acc. to EN 60715, material: Steel, galvanized, passivated with a thick layer, Standard profile, color: silver, Pack of 25 (50 m)

NS 35/ 7,5 WH PERF 2000MM - DIN rail perforated

1204119

<https://www.phoenixcontact.com/in/products/1204119>



DIN rail perforated, acc. to EN 60715, material: Steel, Galvanized, white passivated, Standard profile, color: silver, Pack of 25 (50 m)

RT 3-PE - Bolt connection terminal block



3049411

<https://www.phoenixcontact.com/in/products/3049411>

NS 35/ 7,5 WH UNPERF 2000MM-VPE 10 - DIN rail, unperforated

1204122

<https://www.phoenixcontact.com/in/products/1204122>



DIN rail, unperforated, acc. to EN 60715, material: Steel, Galvanized, white passivated, Standard profile, color: silver, Pack of 10 (20 m)

NS 35/ 7,5 AL UNPERF 2000MM - DIN rail, unperforated

0801704

<https://www.phoenixcontact.com/in/products/0801704>



DIN rail, unperforated, acc. to EN 60715, material: Aluminum, uncoated, Standard profile, color: silver, Pack of 25 (50 m)

RT 3-PE - Bolt connection terminal block

3049411

<https://www.phoenixcontact.com/in/products/3049411>

NS 35/ 7,5 ZN PERF 2000MM - DIN rail perforated

1206421

<https://www.phoenixcontact.com/in/products/1206421>



DIN rail perforated, acc. to EN 60715, material: Steel, galvanized, Standard profile, color: silver, Pack of 25 (50 m)

NS 35/ 7,5 ZN UNPERF 2000MM - DIN rail, unperforated

1206434

<https://www.phoenixcontact.com/in/products/1206434>



DIN rail, unperforated, acc. to EN 60715, material: Steel, galvanized, Standard profile, color: silver, Pack of 25 (50 m)

RT 3-PE - Bolt connection terminal block



3049411

<https://www.phoenixcontact.com/in/products/3049411>

NS 35/ 7,5 CU UNPERF 2000MM-VPE 10 - DIN rail, unperforated

0801762

<https://www.phoenixcontact.com/in/products/0801762>



DIN rail, unperforated, acc. to EN 60715, material: Copper, uncoated, Standard profile, color: copper-colored, Pack of 10 (20 m)

NS 35/ 7,5 CAP - End cap

1206560

<https://www.phoenixcontact.com/in/products/1206560>

DIN rail end piece, for DIN rail NS 35/7.5



RT 3-PE - Bolt connection terminal block

3049411

<https://www.phoenixcontact.com/in/products/3049411>

NS 35/15 PERF 2000MM - DIN rail perforated

1201730

<https://www.phoenixcontact.com/in/products/1201730>



DIN rail perforated, similar to EN 60715, material: Steel, galvanized, passivated with a thick layer, Standard profile, color: silver, Pack of 25 (50 m)

NS 35/15 UNPERF 2000MM - DIN rail, unperforated

1201714

<https://www.phoenixcontact.com/in/products/1201714>



DIN rail, unperforated, similar to EN 60715, material: Steel, galvanized, passivated with a thick layer, Standard profile, color: silver, Pack of 25 (50 m)

RT 3-PE - Bolt connection terminal block

3049411

<https://www.phoenixcontact.com/in/products/3049411>

NS 35/15 WH PERF 2000MM - DIN rail perforated

0806602

<https://www.phoenixcontact.com/in/products/0806602>



DIN rail perforated, similar to EN 60715, material: Steel, Galvanized, white passivated, Standard profile, color: white, Pack of 25 (50 m)

NS 35/15 WH UNPERF 2000MM-VPE 10 - DIN rail, unperforated

1204135

<https://www.phoenixcontact.com/in/products/1204135>



DIN rail, unperforated, similar to EN 60715, material: Steel, Galvanized, white passivated, Standard profile, color: silver, Pack of 10 (20 m)

RT 3-PE - Bolt connection terminal block

3049411

<https://www.phoenixcontact.com/in/products/3049411>



NS 35/15 AL UNPERF 2000MM - DIN rail, unperforated

1201756

<https://www.phoenixcontact.com/in/products/1201756>



DIN rail, unperforated, similar to EN 60715, material: Aluminum, uncoated, Standard profile, color: silver

NS 35/15 ZN PERF 2000MM - DIN rail perforated

1206599

<https://www.phoenixcontact.com/in/products/1206599>



DIN rail perforated, similar to EN 60715, material: Steel, galvanized, Standard profile, color: silver, Pack of 25 (50 m)

RT 3-PE - Bolt connection terminal block

3049411

<https://www.phoenixcontact.com/in/products/3049411>

NS 35/15 ZN UNPERF 2000MM - DIN rail, unperforated

1206586

<https://www.phoenixcontact.com/in/products/1206586>



DIN rail, unperforated, similar to EN 60715, material: Steel, galvanized, Standard profile, color: silver, Pack of 25 (50 m)

NS 35/15 CU UNPERF 2000MM-VPE 10 - DIN rail, unperforated

1201895

<https://www.phoenixcontact.com/in/products/1201895>



DIN rail, unperforated, similar to EN 60715, material: Copper, uncoated, Standard profile, color: copper-colored, Pack of 10 (20 m)

RT 3-PE - Bolt connection terminal block

3049411

<https://www.phoenixcontact.com/in/products/3049411>

NS 35/15 CAP - End cap

1206573

<https://www.phoenixcontact.com/in/products/1206573>

DIN rail end piece, for DIN rail NS 35/15



NS 35/15-2,3 UNPERF 2000MM-VPE 10 - DIN rail, unperforated

1201798

<https://www.phoenixcontact.com/in/products/1201798>

DIN rail, unperforated, acc. to EN 60715, material: Steel, galvanized, passivated with a thick layer, Standard profile 2.3 mm, color: silver, Pack of 10 (20 m)



RT 3-PE - Bolt connection terminal block



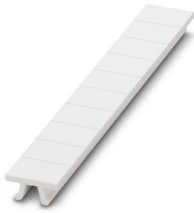
3049411

<https://www.phoenixcontact.com/in/products/3049411>

ZB 8:UNBEDRUCKT - Zack marker strip

1052002

<https://www.phoenixcontact.com/in/products/1052002>

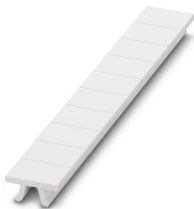


Zack marker strip, Strip, white, unlabeled, can be labeled with: CMS-P1-PLOTTER, PLOTMARK, mounting type: snapped, for terminal block width: 8.2 mm, lettering field size: 10.5 x 8.15 mm, Number of individual labels: 10

ZB 8 CUS - Zack marker strip

0825011

<https://www.phoenixcontact.com/in/products/0825011>



Zack marker strip, can be ordered: Strip, white, labeled according to customer specifications, mounting type: snap into tall marker groove, for terminal block width: 8.2 mm, lettering field size: 10.5 x 8.15 mm, Number of individual labels: 10

RT 3-PE - Bolt connection terminal block



3049411

<https://www.phoenixcontact.com/in/products/3049411>

UC-TM 8 - Marker for terminal blocks

0818072

<https://www.phoenixcontact.com/in/products/0818072>



Marker for terminal blocks, Sheet, white, unlabeled, can be labeled with: BLUEMARK ID COLOR, BLUEMARK ID, BLUEMARK CLED, PLOTMARK, CMS-P1-PLOTTER, mounting type: snapped, for terminal block width: 8.2 mm, lettering field size: 7.6 x 10.5 mm, Number of individual labels: 56

UC-TM 8 CUS - Marker for terminal blocks

0824597

<https://www.phoenixcontact.com/in/products/0824597>



Marker for terminal blocks, can be ordered: by sheet, white, labeled according to customer specifications, mounting type: snap into tall marker groove, for terminal block width: 8.2 mm, lettering field size: 7.6 x 10.5 mm, Number of individual labels: 56

RT 3-PE - Bolt connection terminal block



3049411

<https://www.phoenixcontact.com/in/products/3049411>

UCT-TM 8 - Marker for terminal blocks

0828740

<https://www.phoenixcontact.com/in/products/0828740>



Marker for terminal blocks, Sheet, white, unlabeled, can be labeled with: TOPMARK NEO, TOPMARK LASER, BLUEMARK ID COLOR, BLUEMARK ID, BLUEMARK CLED, THERMOMARK PRIME, THERMOMARK CARD 2.0, THERMOMARK CARD, mounting type: snapped, for terminal block width: 8.2 mm, lettering field size: 7.6 x 10.5 mm, Number of individual labels: 42

UCT-TM 8 CUS - Marker for terminal blocks

0829616

<https://www.phoenixcontact.com/in/products/0829616>



Marker for terminal blocks, can be ordered: by sheet, white, labeled according to customer specifications, mounting type: snap into tall marker groove, for terminal block width: 8.2 mm, lettering field size: 7.6 x 10.5 mm, Number of individual labels: 42

RT 3-PE - Bolt connection terminal block

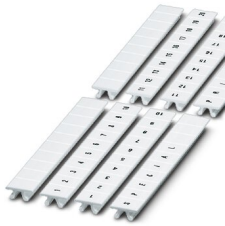
3049411

<https://www.phoenixcontact.com/in/products/3049411>

ZB 8,LGS:FORTL.ZAHLEN - Zack marker strip

1052015

<https://www.phoenixcontact.com/in/products/1052015>

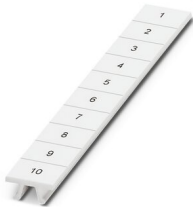


Zack marker strip, Strip, white, labeled, can be labeled with: CMS-P1-PLOTTER, printed horizontally: consecutive numbers 1 ... 10, 11 ... 20, etc. up to 91 ... 100, mounting type: snapped, for terminal block width: 8.2 mm, lettering field size: 10. 5 x 8.15 mm, Number of individual labels: 10

ZB 8,QR:FORTL.ZAHLEN - Zack marker strip

1052028

<https://www.phoenixcontact.com/in/products/1052028>



Zack marker strip, Strip, white, labeled, can be labeled with: CMS-P1-PLOTTER, Printed vertically: consecutive numbers 1 ... 10, 11 ... 20, etc. up to 91 ... 100, mounting type: snapped, for terminal block width: 8.2 mm, lettering field size: 10. 5 x 8.15 mm, Number of individual labels: 10

RT 3-PE - Bolt connection terminal block

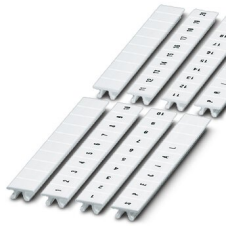
3049411

<https://www.phoenixcontact.com/in/products/3049411>

ZB 8,LGS:L1-N,PE - Marker for terminal blocks

1052413

<https://www.phoenixcontact.com/in/products/1052413>

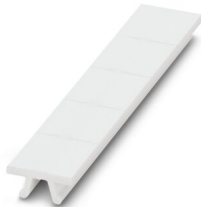


Marker for terminal blocks, Strip, white, labeled, can be labeled with: CMS-P1-PLOTTER, horizontal: L1, L2, L3, N, PE, L1, L2, L3, N, PE, mounting type: snapped, for terminal block width: 8.2 mm, lettering field size: 10.5 x 8.15 mm, Number of individual labels: 10

ZB 12:UNPRINTED - Zack marker strip

0812120

<https://www.phoenixcontact.com/in/products/0812120>



Zack marker strip, Strip, white, unlabeled, can be labeled with: PLOTMARK, CMS-P1-PLOTTER, mounting type: snapped, for terminal block width: 12.2 mm, lettering field size: 12 x 10.5 mm, Number of individual labels: 5

RT 3-PE - Bolt connection terminal block

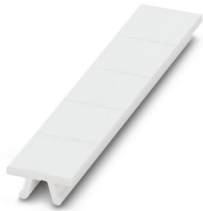
3049411

<https://www.phoenixcontact.com/in/products/3049411>

ZB 12 CUS - Zack marker strip

0824942

<https://www.phoenixcontact.com/in/products/0824942>



Zack marker strip, can be ordered: Strip, white, labeled according to customer specifications, mounting type: snap into tall marker groove, for terminal block width: 12.2 mm, lettering field size: 10.5 x 12.15 mm, Number of individual labels: 5

ZB 12,LGS:L1-N,PE - Zack marker strip

0812146

<https://www.phoenixcontact.com/in/products/0812146>



Zack marker strip, Strip, white, labeled, printed horizontally: L1, L2, L3, N, PE, mounting type: snapped, for terminal block width: 12.2 mm, lettering field size: 10.5 x 12.15 mm, Number of individual labels: 5

RT 3-PE - Bolt connection terminal block



3049411

<https://www.phoenixcontact.com/in/products/3049411>

UC-TM 12 - Marker for terminal blocks

0819194

<https://www.phoenixcontact.com/in/products/0819194>



Marker for terminal blocks, Sheet, white, unlabeled, can be labeled with: BLUEMARK ID COLOR, BLUEMARK ID, BLUEMARK CLED, PLOTMARK, CMS-P1-PLOTTER, mounting type: snapped, for terminal block width: 12 mm, lettering field size: 11.45 x 10.5 mm, Number of individual labels: 40

UC-TM 12 CUS - Marker for terminal blocks

0824613

<https://www.phoenixcontact.com/in/products/0824613>



Marker for terminal blocks, can be ordered: by sheet, white, labeled according to customer specifications, mounting type: snap into tall marker groove, for terminal block width: 12 mm, lettering field size: 11.45 x 10.5 mm, Number of individual labels: 40

RT 3-PE - Bolt connection terminal block

3049411

<https://www.phoenixcontact.com/in/products/3049411>

UCT-TM 12 - Marker for terminal blocks

0829144

<https://www.phoenixcontact.com/in/products/0829144>



Marker for terminal blocks, Sheet, white, unlabeled, can be labeled with: TOPMARK NEO, TOPMARK LASER, BLUEMARK ID COLOR, BLUEMARK ID, BLUEMARK CLED, THERMOMARK PRIME, THERMOMARK CARD 2.0, THERMOMARK CARD, mounting type: snapped, for terminal block width: 12 mm, lettering field size: 10.8 x 9.6 mm, Number of individual labels: 30

UCT-TM 12 CUS - Marker for terminal blocks

0829630

<https://www.phoenixcontact.com/in/products/0829630>



Marker for terminal blocks, can be ordered: by sheet, white, labeled according to customer specifications, mounting type: snap into tall marker groove, for terminal block width: 12 mm, lettering field size: 10.8 x 9.6 mm, Number of individual labels: 30

RT 3-PE - Bolt connection terminal block

3049411

<https://www.phoenixcontact.com/in/products/3049411>



MPS-MT - Test plugs

0201744

<https://www.phoenixcontact.com/in/products/0201744>



Test plugs, with solder connection up to 1 mm² conductor cross section, color: gray

MPS-IH WH - Insulating sleeve

0201663

<https://www.phoenixcontact.com/in/products/0201663>

Insulating sleeve, color: white



RT 3-PE - Bolt connection terminal block



3049411

<https://www.phoenixcontact.com/in/products/3049411>

MPS-IH RD - Insulating sleeve

0201676

<https://www.phoenixcontact.com/in/products/0201676>

Insulating sleeve, color: red

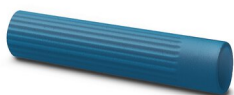


MPS-IH BU - Insulating sleeve

0201689

<https://www.phoenixcontact.com/in/products/0201689>

Insulating sleeve, color: blue



RT 3-PE - Bolt connection terminal block

3049411

<https://www.phoenixcontact.com/in/products/3049411>

MPS-IH YE - Insulating sleeve

0201692

<https://www.phoenixcontact.com/in/products/0201692>

Insulating sleeve, color: yellow



MPS-IH GN - Insulating sleeve

0201702

<https://www.phoenixcontact.com/in/products/0201702>

Insulating sleeve, color: green



RT 3-PE - Bolt connection terminal block



3049411

<https://www.phoenixcontact.com/in/products/3049411>

MPS-IH GY - Insulating sleeve

0201728

<https://www.phoenixcontact.com/in/products/0201728>

Insulating sleeve, color: gray



MPS-IH BK - Insulating sleeve

0201731

<https://www.phoenixcontact.com/in/products/0201731>

Insulating sleeve, color: black



RT 3-PE - Bolt connection terminal block

3049411

<https://www.phoenixcontact.com/in/products/3049411>



PAI-4-N GY - Test adapter

3032871

<https://www.phoenixcontact.com/in/products/3032871>



4 mm test adapter, for terminal blocks with 5.2 mm, 6.2 mm and 8.2 mm pitch

PS-6 - Test plugs

3030996

<https://www.phoenixcontact.com/in/products/3030996>



Test plugs, Modular test plug, color: red

RT 3-PE - Bolt connection terminal block

3049411

<https://www.phoenixcontact.com/in/products/3049411>



PS-6/2,3MM RD - Test plugs

3038736

<https://www.phoenixcontact.com/in/products/3038736>

Test plugs, color: red



CLIPFIX 35 - End clamp

3022218

<https://www.phoenixcontact.com/in/products/3022218>

Quick mounting end clamp for NS 35/7,5 DIN rail or NS 35/15 DIN rail, with marking option, width: 9.5 mm, color: gray



RT 3-PE - Bolt connection terminal block

3049411

<https://www.phoenixcontact.com/in/products/3049411>

CLIPFIX 35-5 - End clamp

3022276

<https://www.phoenixcontact.com/in/products/3022276>

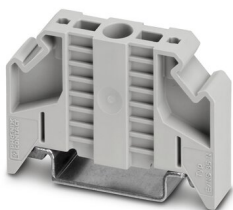


Quick mounting end clamp for NS 35/7,5 DIN rail or NS 35/15 DIN rail, with marking option, with parking option for FBS...5, FBS...6, KSS 5, KSS 6, width: 5.15 mm, color: gray

E/NS 35 N - End clamp

0800886

<https://www.phoenixcontact.com/in/products/0800886>



End clamp, width: 9.5 mm, color: gray

RT 3-PE - Bolt connection terminal block



3049411

<https://www.phoenixcontact.com/in/products/3049411>

E/UK - End clamp

1201442

<https://www.phoenixcontact.com/in/products/1201442>

End clamp, material: PA, color: gray, Mounting on a DIN rail NS 32 or NS 35



E/UK 1 - End clamp

1201413

<https://www.phoenixcontact.com/in/products/1201413>

End clamps, for supporting the ends of double-level and three-level terminal blocks, width: 10 mm, color: gray



Phoenix Contact 2023 © - all rights reserved
<https://www.phoenixcontact.com>

PHOENIX CONTACT (I) Pvt. Ltd.
A-58/2, Okhla Industrial Area, Phase - II, New Delhi-110 020

+91.1275.71420
info@phoenixcontact.co.in