

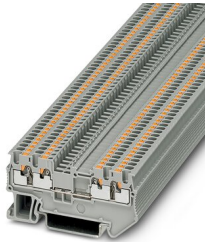
PT 1,5/S-QUATTRO - Feed-through terminal block



3208197

<https://www.phoenixcontact.com/in/products/3208197>

Please be informed that the data shown in this PDF document is generated from our Online Catalog. Please find the complete data in the user documentation. Our General Terms of Use for Downloads are valid.



Feed-through terminal block, nom. voltage: 500 V, nominal current: 17.5 A, connection method: Push-in connection, Rated cross section: 1.5 mm², cross section: 0.14 mm² - 1.5 mm², mounting type: NS 35/7,5, NS 35/15, color: gray

Your advantages

- In addition to the testing facility in the double function shaft, all terminal blocks provide an additional test connection
- The compact design and front connection enable wiring in a confined space
- The Push-in connection terminal blocks are characterized by the system features of the CLIPLINE complete system and by easy and tool-free wiring of conductors with ferrules or solid conductors
- Tested for railway applications

Commercial Data

Item number	3208197
Packing unit	50 pc
Minimum order quantity	50 pc
Sales Key	BE2
Product Key	BE2213
Catalog Page	Page 39 (C-1-2019)
GTIN	4046356564328
Weight per Piece (including packing)	5.146 g
Weight per Piece (excluding packing)	4.828 g
Customs tariff number	85369010
Country of origin	DE

PT 1,5/S-QUATTRO - Feed-through terminal block



3208197

<https://www.phoenixcontact.com/in/products/3208197>

Technical Data

Notes

General

Note	The max. load current must not be exceeded by the total current of all connected conductors.
------	--

Product properties

Product type	Multi-conductor terminal block
Area of application	Railway industry
	Machine building
	Plant engineering
Number of connections	4
Number of rows	1
Potentials	1

Insulation characteristics

Overvoltage category	III
Degree of pollution	3

Electrical properties

Rated surge voltage	6 kV
Maximum power dissipation for nominal condition	0.56 W

Connection data

Number of connections per level	4
Nominal cross section	1.5 mm ²
Stripping length	8 mm ... 10 mm
Internal cylindrical gage	A1 / B1
Connection in acc. with standard	IEC 60947-7-1
Conductor cross section solid	0.14 mm ² ... 1.5 mm ²
Cross section AWG	26 ... 14 (converted acc. to IEC)
Conductor cross section flexible	0.14 mm ² ... 1.5 mm ²
Conductor cross section, flexible [AWG]	26 ... 14 (converted acc. to IEC)
Flexible conductor cross section flexible (Ferrules without plastic sleeve)	0.14 mm ² ... 1.5 mm ²
Flexible conductor cross section (ferrule with plastic sleeve)	0.14 mm ² ... 1 mm ²
Nominal current	17.5 A
Maximum load current	17.5 A (The maximum load current must not be exceeded by the total current of all connected conductors.)
Nominal voltage	500 V
Nominal cross section	1.5 mm ²

Connection cross sections directly pluggable

Conductor cross section solid	0.25 mm ² ... 1.5 mm ²
-------------------------------	--

PT 1,5/S-QUATTRO - Feed-through terminal block



3208197

<https://www.phoenixcontact.com/in/products/3208197>

Flexible conductor cross section flexible (Ferrules without plastic sleeve)	0.34 mm ² ... 1.5 mm ²
Flexible conductor cross section (ferrule with plastic sleeve)	0.34 mm ² ... 1 mm ²

Ex data

Rated data (ATEX/IECEX)

Identification	□ II 2 GD Ex eb IIC Gb
Operating temperature range	-60 °C ... 110 °C
Ex-certified accessories	3208375 D-PT 1,5/S-QUATTRO
	3030815 ATP-ST QUATTRO
	1204504 SZF 0-0,4X2,5
	3022276 CLIPFIX 35-5
	3022218 CLIPFIX 35
List of bridges	Plug-in bridge / FBS 2-3,5 / 3213014
	Plug-in bridge / FBS 3-3,5 / 3213027
	Plug-in bridge / FBS 4-3,5 / 3213030
	Plug-in bridge / FBS 5-3,5 / 3213043
	Plug-in bridge / FBS 10-3,5 / 3213056
	Plug-in bridge / FBS 20-3,5 / 3213069
Bridge data	14.5 A / 1.5 mm ²
Ex temperature increase	40 K (15 A / 1.5 mm ²)
Rated voltage	352 V
for bridging with bridge	352 V
- At bridging between non-adjacent terminal blocks	220 V
- At bridging between non-adjacent terminal blocks via PE terminal block	220 V
- At cut-to-length bridging	166 V
- At cut-to-length bridging with cover	275 V
- At cut-to-length bridging with partition plate	352 V
Rated insulation voltage	320 V
output	(Permanent)

Ex level General

Rated current	15 A
Maximum load current	15 A
Contact resistance	1.5 mΩ

Ex connection data General

Nominal cross section	1.5 mm ²
Rated cross section AWG	16
Connection capacity rigid	0.14 mm ² ... 1.5 mm ²
Connection capacity AWG	26 ... 16
Connection capacity flexible	0.14 mm ² ... 1.5 mm ²
Connection capacity AWG	26 ... 16

PT 1,5/S-QUATTRO - Feed-through terminal block



3208197

<https://www.phoenixcontact.com/in/products/3208197>

Dimensions

Width	3.5 mm
End cover width	2.2 mm
Height	30.5 mm
Height NS 35/15	39.5 mm
Height NS 35/7,5	32 mm
Length	63.2 mm

Material specifications

Color	gray
Flammability rating according to UL 94	V0
Insulating material group	I
Insulating material	PA
Static insulating material application in cold	-60 °C
Relative insulation material temperature index (Elec., UL 746 B)	130 °C
Fire protection for rail vehicles (DIN EN 45545-2) R22	HL 1 - HL 3
Fire protection for rail vehicles (DIN EN 45545-2) R23	HL 1 - HL 3
Fire protection for rail vehicles (DIN EN 45545-2) R24	HL 1 - HL 3
Fire protection for rail vehicles (DIN EN 45545-2) R26	HL 1 - HL 3
Surface flammability NFPA 130 (ASTM E 162)	passed
Specific optical density of smoke NFPA 130 (ASTM E 662)	passed
Smoke gas toxicity NFPA 130 (SMP 800C)	passed

Electrical tests

Surge voltage test

Test voltage setpoint	7.3 kV
Result	Test passed

Temperature-rise test

Requirement temperature-rise test	Increase in temperature \leq 45 K
Result	Test passed
Short-time withstand current 1.5 mm ²	0.18 kA
Result	Test passed

Power-frequency withstand voltage

Test voltage setpoint	1.89 kV
Result	Test passed

Mechanical properties

Mechanical data

Open side panel	Yes
-----------------	-----

Mechanical tests

PT 1,5/S-QUATTRO - Feed-through terminal block



3208197

<https://www.phoenixcontact.com/in/products/3208197>

Mechanical strength

Result	Test passed
--------	-------------

Attachment on the carrier

DIN rail/fixing support	NS 35
Result	Test passed

Test for conductor damage and slackening

Rotation speed	10 rpm
Revolutions	135
Conductor cross section/weight	0.14 mm ² / 0.2 kg
	1.5 mm ² / 0.4 kg
Result	Test passed

Environmental and real-life conditions

Aging

Temperature cycles	192
Result	Test passed

Needle-flame test

Time of exposure	30 s
Result	Test passed

Oscillation/broadband noise

Specification	DIN EN 50155 (VDE 0115-200):2022-06
Spectrum	Service life test category 2, bogie-mounted
Frequency	$f_1 = 5 \text{ Hz}$ to $f_2 = 250 \text{ Hz}$
ASD level	11.83 (m/s ²)/Hz
Acceleration	4.25g
Test duration per axis	5 h
Test directions	X-, Y- and Z-axis
Result	Test passed

Shocks

Specification	DIN EN 50155 (VDE 0115-200):2022-06
Pulse shape	Half-sine
Acceleration	30g
Shock duration	18 ms
Number of shocks per direction	3
Test directions	X-, Y- and Z-axis (pos. and neg.)
Result	Test passed

Ambient conditions

Ambient temperature (operation)	-60 °C ... 105 °C (max. short-term operating temperature RTI Elec.)
---------------------------------	---

PT 1,5/S-QUATTRO - Feed-through terminal block



3208197

<https://www.phoenixcontact.com/in/products/3208197>

Ambient temperature (storage/transport)	-25 °C ... 60 °C (for a short time, not exceeding 24 h, -60 °C to +70 °C)
Ambient temperature (assembly)	-5 °C ... 70 °C
Ambient temperature (actuation)	-5 °C ... 70 °C
Permissible humidity (storage/transport)	30 % ... 70 %

Standards and regulations

Connection in acc. with standard	IEC 60947-7-1
----------------------------------	---------------

Mounting

Mounting type	NS 35/7,5
	NS 35/15

PT 1,5/S-QUATTRO - Feed-through terminal block



3208197

<https://www.phoenixcontact.com/in/products/3208197>

Drawings

Circuit diagram



PT 1,5/S-QUATTRO - Feed-through terminal block



3208197

<https://www.phoenixcontact.com/in/products/3208197>

Approvals



CSA

Approval ID: 13631



IECEE CB Scheme

Approval ID: DE1-62964



EAC

Approval ID: RU C-DE.AI30.B.01102



cULus Recognized

Approval ID: E60425



LR

Approval ID: LR2371832TA



NK

Approval ID: 14ME0912



RS

Approval ID: 22.44.01.00083.250



BV

Approval ID: 39980/B0 BV



VDE Zeichengenehmigung

Approval ID: 40039739



EAC Ex

Approval ID: RU C-DE.AB72.B.02351



IEC Ex

Approval ID: IECEx SEV13.0005U



ATEX

Approval ID: SEV13ATEX0159U

PT 1,5/S-QUATTRO - Feed-through terminal block



3208197

<https://www.phoenixcontact.com/in/products/3208197>



CCC

Approval ID: 2020322313000631



NEPSI

Approval ID: GYJ20.1198U



UKCA-EX

Approval ID: CML 22UKEX1224U



IECEX

Approval ID: IECEX SEV13.0005U



ATEX

Approval ID: SEV13ATEX0159U

PT 1,5/S-QUATTRO - Feed-through terminal block



3208197

<https://www.phoenixcontact.com/in/products/3208197>

Classifications

ECLASS

ECLASS-10.0.1	27141120
ECLASS-11.0	27141120

ETIM

ETIM 8.0	EC000897
----------	----------

UNSPSC

UNSPSC 21.0	39121400
-------------	----------

PT 1,5/S-QUATTRO - Feed-through terminal block



3208197

<https://www.phoenixcontact.com/in/products/3208197>

Environmental Product Compliance


China RoHS	Environmentally friendly use period: unlimited = EFUP-e
	No hazardous substances above threshold values

PT 1,5/S-QUATTRO - Feed-through terminal block

3208197

<https://www.phoenixcontact.com/in/products/3208197>

Accessories

 Note: Applying some accessories below might limit this product.


FBS 2-3,5 - Plug-in bridge

3213014

<https://www.phoenixcontact.com/in/products/3213014>



Plug-in bridge, pitch: 3.5 mm, number of positions: 2, color: red

 Max. current carrying capacity: 17.5 A


FBS 3-3,5 - Plug-in bridge

3213027

<https://www.phoenixcontact.com/in/products/3213027>



Plug-in bridge, pitch: 3.5 mm, number of positions: 3, color: red

 Max. current carrying capacity: 17.5 A

PT 1,5/S-QUATTRO - Feed-through terminal block

3208197

<https://www.phoenixcontact.com/in/products/3208197>


FBS 4-3,5 - Plug-in bridge

3213030

<https://www.phoenixcontact.com/in/products/3213030>



Plug-in bridge, pitch: 3.5 mm, number of positions: 4, color: red

 Max. current carrying capacity: 17.5 A

FBS 5-3,5 - Plug-in bridge

3213043

<https://www.phoenixcontact.com/in/products/3213043>



Plug-in bridge, pitch: 3.5 mm, number of positions: 5, color: red

 Max. current carrying capacity: 17.5 A

PT 1,5/S-QUATTRO - Feed-through terminal block

3208197

<https://www.phoenixcontact.com/in/products/3208197>

FBS 10-3,5 - Plug-in bridge

3213056

<https://www.phoenixcontact.com/in/products/3213056>



Plug-in bridge, pitch: 3.5 mm, number of positions: 10, color: red

 Max. current carrying capacity: 17.5 A

FBS 20-3,5 - Plug-in bridge

3213069

<https://www.phoenixcontact.com/in/products/3213069>



Plug-in bridge, pitch: 3.5 mm, number of positions: 20, color: red

 Max. current carrying capacity: 17.5 A

PT 1,5/S-QUATTRO - Feed-through terminal block

3208197

<https://www.phoenixcontact.com/in/products/3208197>

FBS 2-3,5 BU - Plug-in bridge

3213086

<https://www.phoenixcontact.com/in/products/3213086>



Plug-in bridge, pitch: 3.5 mm, number of positions: 2, color: blue

 Max. current carrying capacity: 17.5 A

FBS 3-3,5 BU - Plug-in bridge

3213099

<https://www.phoenixcontact.com/in/products/3213099>



Plug-in bridge, pitch: 3.5 mm, number of positions: 3, color: blue

 Max. current carrying capacity: 17.5 A

PT 1,5/S-QUATTRO - Feed-through terminal block

3208197

<https://www.phoenixcontact.com/in/products/3208197>

FBS 4-3,5 BU - Plug-in bridge

3213109

<https://www.phoenixcontact.com/in/products/3213109>



Plug-in bridge, pitch: 3.5 mm, number of positions: 4, color: blue

 Max. current carrying capacity: 17.5 A

FBS 5-3,5 BU - Plug-in bridge

3213112

<https://www.phoenixcontact.com/in/products/3213112>



Plug-in bridge, pitch: 3.5 mm, number of positions: 5, color: blue

 Max. current carrying capacity: 17.5 A

PT 1,5/S-QUATTRO - Feed-through terminal block

3208197

<https://www.phoenixcontact.com/in/products/3208197>


FBS 10-3,5 BU - Plug-in bridge

3213125

<https://www.phoenixcontact.com/in/products/3213125>



Plug-in bridge, pitch: 3.5 mm, number of positions: 10, color: blue

 Max. current carrying capacity: 17.5 A

FBS 20-3,5 BU - Plug-in bridge

3213138

<https://www.phoenixcontact.com/in/products/3213138>



Plug-in bridge, pitch: 3.5 mm, number of positions: 20, color: blue

 Max. current carrying capacity: 17.5 A

PT 1,5/S-QUATTRO - Feed-through terminal block

3208197

<https://www.phoenixcontact.com/in/products/3208197>


FBS 2-3,5 GY - Plug-in bridge

3213153

<https://www.phoenixcontact.com/in/products/3213153>



Plug-in bridge, pitch: 3.5 mm, number of positions: 2, color: gray

 Max. current carrying capacity: 17.5 A

FBS 3-3,5 GY - Plug-in bridge

3213167

<https://www.phoenixcontact.com/in/products/3213167>



Plug-in bridge, pitch: 3.5 mm, number of positions: 3, color: gray

 Max. current carrying capacity: 17.5 A

PT 1,5/S-QUATTRO - Feed-through terminal block

3208197

<https://www.phoenixcontact.com/in/products/3208197>


FBS 4-3,5 GY - Plug-in bridge

3213180

<https://www.phoenixcontact.com/in/products/3213180>



Plug-in bridge, pitch: 3.5 mm, number of positions: 4, color: gray

 Max. current carrying capacity: 17.5 A


FBS 5-3,5 GY - Plug-in bridge

3213183

<https://www.phoenixcontact.com/in/products/3213183>



Plug-in bridge, pitch: 3.5 mm, number of positions: 5, color: gray

 Max. current carrying capacity: 17.5 A

PT 1,5/S-QUATTRO - Feed-through terminal block

3208197

<https://www.phoenixcontact.com/in/products/3208197>

FBS 10-3,5 GY - Plug-in bridge

3213196

<https://www.phoenixcontact.com/in/products/3213196>



Plug-in bridge, pitch: 3.5 mm, number of positions: 10, color: gray

 Max. current carrying capacity: 17.5 A


FBS 20-3,5 GY - Plug-in bridge

3213206

<https://www.phoenixcontact.com/in/products/3213206>



Plug-in bridge, pitch: 3.5 mm, number of positions: 20, color: gray

 Max. current carrying capacity: 17.5 A

PT 1,5/S-QUATTRO - Feed-through terminal block

3208197

<https://www.phoenixcontact.com/in/products/3208197>

RB ST (2,5/4)-1,5/S - Reducing bridge

3214356

<https://www.phoenixcontact.com/in/products/3214356>



Reducing bridge, pitch: 6.7 mm, number of positions: 2, length: 23 mm, color: red

 Max. current carrying capacity: 24 A

RB ST 16-1,5/S - Reducing bridge

3213254

<https://www.phoenixcontact.com/in/products/3213254>



Reducing bridge, pitch: 10 mm, number of positions: 2, length: 37 mm, color: red

 Max. current carrying capacity: 24 A

PT 1,5/S-QUATTRO - Feed-through terminal block



3208197

<https://www.phoenixcontact.com/in/products/3208197>

RB ST 10-1,5/S - Reducing bridge

3213252

<https://www.phoenixcontact.com/in/products/3213252>



Reducing bridge, pitch: 3.5 mm, number of positions: 2, length: 36 mm, color: red

 Max. current carrying capacity: 24 A

RB ST 6-1,5/S - Reducing bridge

3213250

<https://www.phoenixcontact.com/in/products/3213250>



Reducing bridge, pitch: 8 mm, number of positions: 2, length: 30 mm, color: red

 Max. current carrying capacity: 24 A

PT 1,5/S-QUATTRO - Feed-through terminal block



3208197

<https://www.phoenixcontact.com/in/products/3208197>

GBS-ZB/26X6 - Group marker label for terminal marking

0809298

<https://www.phoenixcontact.com/in/products/0809298>



Group marking label, snaps onto terminal center for screw, spring-cage and quick connection terminal blocks, labeled with ESL 26x6 mm or EST 25x6 mm, in the foot part with Zack marker strip, length: 29 mm

SZF 0-0,4X2,5 - Screwdriver

1204504

<https://www.phoenixcontact.com/in/products/1204504>



Actuation tool, for ST terminal blocks, also suitable for use as a bladed screwdriver, size: 0.4 x 2.5 x 75 mm, 2-component grip, with non-slip grip

PT 1,5/S-QUATTRO - Feed-through terminal block



3208197

<https://www.phoenixcontact.com/in/products/3208197>

ATP-ST QUATTRO - Partition plate

3030815

<https://www.phoenixcontact.com/in/products/3030815>

Partition plate, length: 90.9 mm, width: 2 mm, height: 45 mm, color: gray



D-PT 1,5/S-QUATTRO - End cover

3208375

<https://www.phoenixcontact.com/in/products/3208375>

End cover, length: 63.2 mm, width: 2.2 mm, height: 24.3 mm, color: gray



PT 1,5/S-QUATTRO - Feed-through terminal block



3208197

<https://www.phoenixcontact.com/in/products/3208197>

PT-IL - Mounting material

3208090

<https://www.phoenixcontact.com/in/products/3208090>

Operating decal for the push-in Technology



ST-BW 0 - Actuation tool

1200135

<https://www.phoenixcontact.com/in/products/1200135>

Actuation tool, for all 1.5 mm² spring cages from PT 1,5/S and FT 1,5/S



PT 1,5/S-QUATTRO - Feed-through terminal block



3208197

<https://www.phoenixcontact.com/in/products/3208197>

D-PT 1,5/S-QUATTRO-0,8 OG - End cover

1029591

<https://www.phoenixcontact.com/in/products/1029591>

End cover, length: 63.2 mm, width: 0.8 mm, height: 24.3 mm, color: orange



AI-S 1 - 8 TQ - Ferrule

1200293

<https://www.phoenixcontact.com/in/products/1200293>

Ferrule, S-Slimline, sleeve length: 8 mm, length: 14.5 mm, color: turquoise



PT 1,5/S-QUATTRO - Feed-through terminal block



3208197

<https://www.phoenixcontact.com/in/products/3208197>

NS 35/ 7,5 PERF 2000MM - DIN rail perforated

0801733

<https://www.phoenixcontact.com/in/products/0801733>



DIN rail perforated, acc. to EN 60715, material: Steel, galvanized, passivated with a thick layer, Standard profile, color: silver, Pack of 25 (50 m)

NS 35/ 7,5 UNPERF 2000MM - DIN rail, unperforated

0801681

<https://www.phoenixcontact.com/in/products/0801681>



DIN rail, unperforated, acc. to EN 60715, material: Steel, galvanized, passivated with a thick layer, Standard profile, color: silver, Pack of 25 (50 m)

PT 1,5/S-QUATTRO - Feed-through terminal block

3208197

<https://www.phoenixcontact.com/in/products/3208197>



NS 35/ 7,5 WH PERF 2000MM - DIN rail perforated

1204119

<https://www.phoenixcontact.com/in/products/1204119>



DIN rail perforated, acc. to EN 60715, material: Steel, Galvanized, white passivated, Standard profile, color: silver, Pack of 25 (50 m)

NS 35/ 7,5 WH UNPERF 2000MM-VPE 10 - DIN rail, unperforated

1204122

<https://www.phoenixcontact.com/in/products/1204122>



DIN rail, unperforated, acc. to EN 60715, material: Steel, Galvanized, white passivated, Standard profile, color: silver, Pack of 10 (20 m)

PT 1,5/S-QUATTRO - Feed-through terminal block

3208197

<https://www.phoenixcontact.com/in/products/3208197>



NS 35/ 7,5 AL UNPERF 2000MM - DIN rail, unperforated

0801704

<https://www.phoenixcontact.com/in/products/0801704>



DIN rail, unperforated, acc. to EN 60715, material: Aluminum, uncoated, Standard profile, color: silver, Pack of 25 (50 m)

NS 35/ 7,5 ZN PERF 2000MM - DIN rail perforated

1206421

<https://www.phoenixcontact.com/in/products/1206421>



DIN rail perforated, acc. to EN 60715, material: Steel, galvanized, Standard profile, color: silver, Pack of 25 (50 m)

PT 1,5/S-QUATTRO - Feed-through terminal block

3208197

<https://www.phoenixcontact.com/in/products/3208197>



NS 35/ 7,5 ZN UNPERF 2000MM - DIN rail, unperforated

1206434

<https://www.phoenixcontact.com/in/products/1206434>



DIN rail, unperforated, acc. to EN 60715, material: Steel, galvanized, Standard profile, color: silver, Pack of 25 (50 m)

NS 35/ 7,5 CU UNPERF 2000MM-VPE 10 - DIN rail, unperforated

0801762

<https://www.phoenixcontact.com/in/products/0801762>



DIN rail, unperforated, acc. to EN 60715, material: Copper, uncoated, Standard profile, color: copper-colored, Pack of 10 (20 m)

PT 1,5/S-QUATTRO - Feed-through terminal block



3208197

<https://www.phoenixcontact.com/in/products/3208197>

NS 35/ 7,5 CAP - End cap

1206560

<https://www.phoenixcontact.com/in/products/1206560>

DIN rail end piece, for DIN rail NS 35/7.5



NS 35/15 PERF 2000MM - DIN rail perforated

1201730

<https://www.phoenixcontact.com/in/products/1201730>



DIN rail perforated, similar to EN 60715, material: Steel, galvanized, passivated with a thick layer, Standard profile, color: silver, Pack of 25 (50 m)

PT 1,5/S-QUATTRO - Feed-through terminal block



3208197

<https://www.phoenixcontact.com/in/products/3208197>

NS 35/15 UNPERF 2000MM - DIN rail, unperforated

1201714

<https://www.phoenixcontact.com/in/products/1201714>



DIN rail, unperforated, similar to EN 60715, material: Steel, galvanized, passivated with a thick layer, Standard profile, color: silver, Pack of 25 (50 m)

NS 35/15 WH PERF 2000MM - DIN rail perforated

0806602

<https://www.phoenixcontact.com/in/products/0806602>



DIN rail perforated, similar to EN 60715, material: Steel, Galvanized, white passivated, Standard profile, color: white, Pack of 25 (50 m)

PT 1,5/S-QUATTRO - Feed-through terminal block



3208197

<https://www.phoenixcontact.com/in/products/3208197>

NS 35/15 WH UNPERF 2000MM-VPE 10 - DIN rail, unperforated

1204135

<https://www.phoenixcontact.com/in/products/1204135>



DIN rail, unperforated, similar to EN 60715, material: Steel, Galvanized, white passivated, Standard profile, color: silver, Pack of 10 (20 m)

NS 35/15 AL UNPERF 2000MM - DIN rail, unperforated

1201756

<https://www.phoenixcontact.com/in/products/1201756>



DIN rail, unperforated, similar to EN 60715, material: Aluminum, uncoated, Standard profile, color: silver

PT 1,5/S-QUATTRO - Feed-through terminal block

3208197

<https://www.phoenixcontact.com/in/products/3208197>

NS 35/15 ZN PERF 2000MM - DIN rail perforated

1206599

<https://www.phoenixcontact.com/in/products/1206599>



DIN rail perforated, similar to EN 60715, material: Steel, galvanized, Standard profile, color: silver, Pack of 25 (50 m)

NS 35/15 ZN UNPERF 2000MM - DIN rail, unperforated

1206586

<https://www.phoenixcontact.com/in/products/1206586>



DIN rail, unperforated, similar to EN 60715, material: Steel, galvanized, Standard profile, color: silver, Pack of 25 (50 m)

PT 1,5/S-QUATTRO - Feed-through terminal block

3208197

<https://www.phoenixcontact.com/in/products/3208197>



NS 35/15 CU UNPERF 2000MM-VPE 10 - DIN rail, unperforated

1201895

<https://www.phoenixcontact.com/in/products/1201895>



DIN rail, unperforated, similar to EN 60715, material: Copper, uncoated, Standard profile, color: copper-colored, Pack of 10 (20 m)

NS 35/15 CAP - End cap

1206573

<https://www.phoenixcontact.com/in/products/1206573>

DIN rail end piece, for DIN rail NS 35/15



PT 1,5/S-QUATTRO - Feed-through terminal block

3208197

<https://www.phoenixcontact.com/in/products/3208197>



NS 35/15-2,3 UNPERF 2000MM-VPE 10 - DIN rail, unperforated

1201798

<https://www.phoenixcontact.com/in/products/1201798>



DIN rail, unperforated, acc. to EN 60715, material: Steel, galvanized, passivated with a thick layer, Standard profile 2.3 mm, color: silver, Pack of 10 (20 m)

ZB 3,5:UNBEDRUCKT - Zack marker strip

0829414

<https://www.phoenixcontact.com/in/products/0829414>



Zack marker strip, Strip, white, unlabeled, can be labeled with: PLOTMARK, CMS-P1-PLOTTER, mounting type: snapped, for terminal block width: 3.5 mm, lettering field size: 3.5 x 10.5 mm, Number of individual labels: 10

PT 1,5/S-QUATTRO - Feed-through terminal block

3208197

<https://www.phoenixcontact.com/in/products/3208197>

ZB 3,5 CUS - Zack marker strip

0829415

<https://www.phoenixcontact.com/in/products/0829415>



Zack marker strip, can be ordered: Strip, white, labeled according to customer specifications, mounting type: snap into tall marker groove, for terminal block width: 3.5 mm, lettering field size: 3.5 x 10.5 mm, Number of individual labels: 10

ZB 3,5,LGS:FORTL.ZAHLEN - Zack marker strip

0801404

<https://www.phoenixcontact.com/in/products/0801404>



Zack marker strip, Strip, white, labeled, printed horizontally: consecutive numbers 1 ... 10, 11 ... 20, etc. up to 91 ... 100, mounting type: snapped, for terminal block width: 3.5 mm, lettering field size: 3.5 x 10.5 mm, Number of individual labels: 10

PT 1,5/S-QUATTRO - Feed-through terminal block



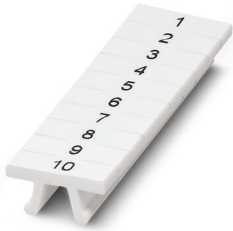
3208197

<https://www.phoenixcontact.com/in/products/3208197>

ZB 3,5,QR:FORT.ZAHLEN - Zack marker strip

0801405

<https://www.phoenixcontact.com/in/products/0801405>



Zack marker strip, Strip, white, labeled, Printed vertically: consecutive numbers 1 ... 10, 11 ... 20, etc. up to 91 ... 100, mounting type: snapped, for terminal block width: 3.5 mm, lettering field size: 3.5 x 10.5 mm, Number of individual labels: 10

UCT-TM 3,5 - Marker for terminal blocks

0829484

<https://www.phoenixcontact.com/in/products/0829484>



Marker for terminal blocks, Sheet, white, unlabeled, can be labeled with: TOPMARK NEO, TOPMARK LASER, BLUEMARK ID COLOR, BLUEMARK ID, BLUEMARK CLED, THERMOMARK PRIME, THERMOMARK CARD 2.0, THERMOMARK CARD, mounting type: snapped, for terminal block width: 3.5 mm, lettering field size: 2.95 x 10.5 mm, Number of individual labels: 102

PT 1,5/S-QUATTRO - Feed-through terminal block



3208197

<https://www.phoenixcontact.com/in/products/3208197>

UCT-TM 3,5 CUS - Marker for terminal blocks

0829581

<https://www.phoenixcontact.com/in/products/0829581>



Marker for terminal blocks, can be ordered: by sheet, white, labeled according to customer specifications, mounting type: snap into tall marker groove, for terminal block width: 3.5 mm, lettering field size: 2.95 x 10.5 mm, Number of individual labels: 102

GBS 3,5-25X3,5 - Group marker label for terminal marking

0830290

<https://www.phoenixcontact.com/in/products/0830290>



Group marking label, snaps into terminal center for push-in terminal blocks ...1.5/S,
Lettering field 25 x 3.5 mm, pitch 3.5 mm, labeled with EML (24 x 3)R

PT 1,5/S-QUATTRO - Feed-through terminal block



3208197

<https://www.phoenixcontact.com/in/products/3208197>

GBS 3,5-25X12 - Group marker label for terminal marking

0830292

<https://www.phoenixcontact.com/in/products/0830292>

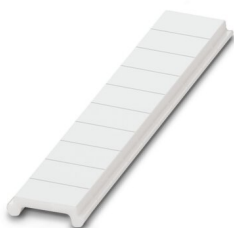


Group marking label, snaps into terminal center for push-in terminal blocks ...1.5/S,
Lettering field 25 x 12 mm, pitch 3.5 mm, labeled with EML (25.4 x 12.7)R

ZBF 3,5:UNBEDRUCKT - Zack Marker strip, flat

0829392

<https://www.phoenixcontact.com/in/products/0829392>



Zack Marker strip, flat, Strip, white, unlabeled, can be labeled with: PLOTMARK, CMS-P1-PLOTTER, mounting type: snapped, for terminal block width: 3.5 mm, lettering field size: 3.5 x 5.2 mm, Number of individual labels: 10

PT 1,5/S-QUATTRO - Feed-through terminal block



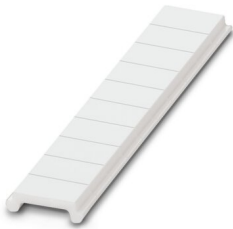
3208197

<https://www.phoenixcontact.com/in/products/3208197>

ZBF 3,5 CUS - Zack Marker strip, flat

0829394

<https://www.phoenixcontact.com/in/products/0829394>



Zack Marker strip, flat, can be ordered: Strip, white, labeled according to customer specifications, mounting type: snap into flat marker groove, for terminal block width: 3.5 mm, lettering field size: 3.5 x 5.2 mm, Number of individual labels: 10

ZBF 3,5,LGS:FORTL.ZAHLEN - Zack Marker strip, flat

0801406

<https://www.phoenixcontact.com/in/products/0801406>



Zack Marker strip, flat, Strip, white, labeled, printed horizontally: consecutive numbers 1 ... 10, 11 ... 20, etc. up to 91 ... 100, mounting type: snapped, for terminal block width: 3.5 mm, lettering field size: 5.15 x 3.5 mm, Number of individual labels: 10

PT 1,5/S-QUATTRO - Feed-through terminal block



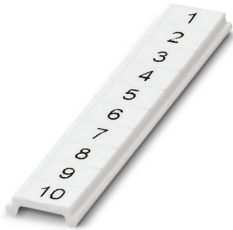
3208197

<https://www.phoenixcontact.com/in/products/3208197>

ZBF 3,5,QR:FORTL.ZAHLEN - Zack Marker strip, flat

0801407

<https://www.phoenixcontact.com/in/products/0801407>



Zack Marker strip, flat, Strip, white, labeled, Printed vertically: consecutive numbers 1 ... 10, 11 ... 20, etc. up to 91 ... 100, mounting type: snapped, for terminal block width: 3.5 mm, lettering field size: 5.15 x 3.5 mm, Number of individual labels: 10

UCT-TMF 3,5 - Marker for terminal blocks

0829486

<https://www.phoenixcontact.com/in/products/0829486>



Marker for terminal blocks, Sheet, white, unlabeled, can be labeled with: TOPMARK NEO, TOPMARK LASER, BLUEMARK ID COLOR, BLUEMARK ID, BLUEMARK CLED, THERMOMARK PRIME, THERMOMARK CARD 2.0, THERMOMARK CARD, mounting type: snapped, for terminal block width: 3.5 mm, lettering field size: 2.7 x 4.7 mm, Number of individual labels: 108

PT 1,5/S-QUATTRO - Feed-through terminal block

3208197

<https://www.phoenixcontact.com/in/products/3208197>



UCT-TMF 3,5 CUS - Marker for terminal blocks

0829644

<https://www.phoenixcontact.com/in/products/0829644>



Marker for terminal blocks, can be ordered: by sheet, white, labeled according to customer specifications, mounting type: snap into flat marker groove, for terminal block width: 3.5 mm, lettering field size: 2.7 x 4.7 mm, Number of individual labels: 108

MPS-MT - Test plugs

0201744

<https://www.phoenixcontact.com/in/products/0201744>



Test plugs, with solder connection up to 1 mm² conductor cross section, color: gray

PT 1,5/S-QUATTRO - Feed-through terminal block



3208197

<https://www.phoenixcontact.com/in/products/3208197>

MPS-IH WH - Insulating sleeve

0201663

<https://www.phoenixcontact.com/in/products/0201663>

Insulating sleeve, color: white



MPS-IH RD - Insulating sleeve

0201676

<https://www.phoenixcontact.com/in/products/0201676>

Insulating sleeve, color: red



PT 1,5/S-QUATTRO - Feed-through terminal block

3208197

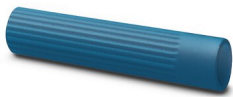
<https://www.phoenixcontact.com/in/products/3208197>

MPS-IH BU - Insulating sleeve

0201689

<https://www.phoenixcontact.com/in/products/0201689>

Insulating sleeve, color: blue



MPS-IH YE - Insulating sleeve

0201692

<https://www.phoenixcontact.com/in/products/0201692>

Insulating sleeve, color: yellow



PT 1,5/S-QUATTRO - Feed-through terminal block



3208197

<https://www.phoenixcontact.com/in/products/3208197>

MPS-IH GN - Insulating sleeve

0201702

<https://www.phoenixcontact.com/in/products/0201702>

Insulating sleeve, color: green



MPS-IH GY - Insulating sleeve

0201728

<https://www.phoenixcontact.com/in/products/0201728>

Insulating sleeve, color: gray



PT 1,5/S-QUATTRO - Feed-through terminal block



3208197

<https://www.phoenixcontact.com/in/products/3208197>

MPS-IH BK - Insulating sleeve

0201731

<https://www.phoenixcontact.com/in/products/0201731>

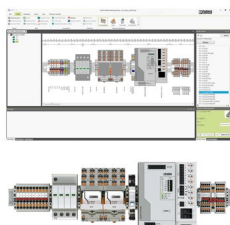
Insulating sleeve, color: black



PROJECT COMPLETE - Software

1050453

<https://www.phoenixcontact.com/in/products/1050453>



Intuitive planning and marking software for configuring terminal strips and for professional marking of marking materials for terminal blocks, conductors, cables, devices, and systems. The software is available for download

PT 1,5/S-QUATTRO - Feed-through terminal block



3208197

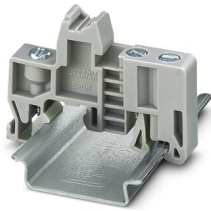
<https://www.phoenixcontact.com/in/products/3208197>

E/UK - End clamp

1201442

<https://www.phoenixcontact.com/in/products/1201442>

End clamp, material: PA, color: gray, Mounting on a DIN rail NS 32 or NS 35



E/UK 1 - End clamp

1201413

<https://www.phoenixcontact.com/in/products/1201413>

End clamps, for supporting the ends of double-level and three-level terminal blocks, width: 10 mm, color: gray



PT 1,5/S-QUATTRO - Feed-through terminal block



3208197

<https://www.phoenixcontact.com/in/products/3208197>

TMT (EX9,5)R - Marker for terminal blocks

0828295

<https://www.phoenixcontact.com/in/products/0828295>



Marker for terminal blocks, Roll, white, unlabeled, can be labeled with: THERMOMARK E.300 (D)/600 (D), THERMOMARK ROLL 2.0, THERMOMARK ROLL, THERMOMARK ROLL X1, THERMOMARK ROLLMASTER 300/600, THERMOMARK X1.2, mounting type: snapped, snap into tall marker groove, lettering field size: 9.5 x 50000 mm, Number of individual labels: 1

US-TM 100 - Marker for terminal blocks

0829255

<https://www.phoenixcontact.com/in/products/0829255>



Marker for terminal blocks, Card, white, unlabeled, can be labeled with: BLUEMARK ID COLOR, BLUEMARK ID, THERMOMARK PRIME, THERMOMARK CARD 2.0, THERMOMARK CARD, mounting type: snapped, lettering field size: 104 x 9.8 mm, Number of individual labels: 13

PT 1,5/S-QUATTRO - Feed-through terminal block



3208197

<https://www.phoenixcontact.com/in/products/3208197>

CLIPFIX 35 - End clamp

3022218

<https://www.phoenixcontact.com/in/products/3022218>



Quick mounting end clamp for NS 35/7,5 DIN rail or NS 35/15 DIN rail, with marking option, width: 9.5 mm, color: gray

CLIPFIX 35-5 - End clamp

3022276

<https://www.phoenixcontact.com/in/products/3022276>



Quick mounting end clamp for NS 35/7,5 DIN rail or NS 35/15 DIN rail, with marking option, with parking option for FBS...5, FBS...6, KSS 5, KSS 6, width: 5.15 mm, color: gray

PT 1,5/S-QUATTRO - Feed-through terminal block

3208197

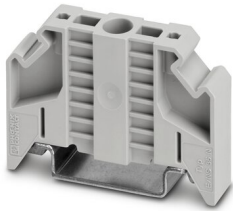
<https://www.phoenixcontact.com/in/products/3208197>

E/NS 35 N - End clamp

0800886

<https://www.phoenixcontact.com/in/products/0800886>

End clamp, width: 9.5 mm, color: gray



PS-3,5 - Test plugs

3031010

<https://www.phoenixcontact.com/in/products/3031010>

Test plugs, Modular test plug, color: red



PT 1,5/S-QUATTRO - Feed-through terminal block



3208197

<https://www.phoenixcontact.com/in/products/3208197>

DP PS-3,5 - Spacer plate

3031011

<https://www.phoenixcontact.com/in/products/3031011>



Spacer plate, length: 15.9 mm, width: 3.5 mm, height: 33.5 mm, number of positions: 1, color: red

PS-3,5/E - Test plugs

3031012

<https://www.phoenixcontact.com/in/products/3031012>



Test plugs, Individual test plug, color: red

PT 1,5/S-QUATTRO - Feed-through terminal block

3208197

<https://www.phoenixcontact.com/in/products/3208197>

CRIMPFOX CENTRUS 6S - Crimping pliers

1213144

<https://www.phoenixcontact.com/in/products/1213144>



Crimping pliers, for uninsulated and insulated ferrules, DIN 46228 Part 1 and 4, from 0.14 mm² ... 6 mm², also for TWIN ferrules up to 2 x 4 mm², automatic cross section adjustment, lateral insertion, equipped with fall protection

CRIMPFOX CENTRUS 10S - Crimping pliers

1213154

<https://www.phoenixcontact.com/in/products/1213154>



Crimping pliers, for uninsulated and insulated ferrules, DIN 46228 Part 1 and 4, from 0.14 mm² ... 10 mm², also for TWIN ferrules up to 2 x 4 mm², automatic cross section adjustment, lateral insertion, equipped with fall protection

PT 1,5/S-QUATTRO - Feed-through terminal block



3208197

<https://www.phoenixcontact.com/in/products/3208197>

CRIMPFOX CENTRUS 6H - Crimping pliers

1213146

<https://www.phoenixcontact.com/in/products/1213146>



Crimping pliers, for uninsulated and insulated ferrules, DIN 46228 Part 1 and 4, from 0.14 mm² ... 6 mm², also for TWIN ferrules up to 2 x 4 mm², automatic cross section adjustment, lateral insertion, equipped with fall protection

CRIMPFOX CENTRUS 10H - Crimping pliers

1213156

<https://www.phoenixcontact.com/in/products/1213156>



Crimping pliers, for uninsulated and insulated ferrules, DIN 46228 Part 1 and 4, from 0.14 mm² ... 10 mm², also for TWIN ferrules up to 2 x 4 mm², automatic cross section adjustment, lateral insertion, equipped with fall protection

PT 1,5/S-QUATTRO - Feed-through terminal block

3208197

<https://www.phoenixcontact.com/in/products/3208197>

CRIMPFOX 10S - Crimping pliers

1212045

<https://www.phoenixcontact.com/in/products/1212045>



Crimping pliers, for ferrules without insulating collar according to DIN 46228 Part 1 and ferrules with insulating collar according to DIN 46228 Part 4, 0.14 mm² ... 10 mm², unlockable pressure lock, lateral entry

CRIMPFOX 6H - Crimping pliers

1212046

<https://www.phoenixcontact.com/in/products/1212046>



Crimping pliers, for ferrules without insulating collar according to DIN 46228 Part 1 and ferrules with insulating collar according to DIN 46228 Part 4, 0.14 mm² ... 6 mm², unlockable pressure lock, lateral entry

PT 1,5/S-QUATTRO - Feed-through terminal block

3208197

<https://www.phoenixcontact.com/in/products/3208197>

CRIMPFOX 2,5-M - Crimping pliers

1212719

<https://www.phoenixcontact.com/in/products/1212719>



Crimping pliers, for ferrules without insulating collar according to DIN 46228 Part 1 and ferrules with insulating collar according to DIN 46228 Part 4, 0.25 mm² ... 2.5 mm², lateral entry, trapezoidal crimp

CRIMPFOX 6-M - Crimping pliers

1212720

<https://www.phoenixcontact.com/in/products/1212720>



Crimping pliers, for ferrules without insulating collar according to DIN 46228 Part 1 and ferrules with insulating collar according to DIN 46228 Part 4, 0.25 mm² ... 6.0 mm², lateral entry, trapezoidal crimp

PT 1,5/S-QUATTRO - Feed-through terminal block

3208197

<https://www.phoenixcontact.com/in/products/3208197>

CRIMPFOX 6 - Crimping pliers

1212034

<https://www.phoenixcontact.com/in/products/1212034>



Crimping pliers, for ferrules without insulating collar according to DIN 46228 Part 1 and ferrules with insulating collar according to DIN 46228 Part 4, 0.25 mm² ... 6.0 mm², lateral entry, trapezoidal crimp

CRIMPFOX 6T - Crimping pliers

1212037

<https://www.phoenixcontact.com/in/products/1212037>



Crimping pliers, for ferrules without insulating collar according to DIN 46228 Part 1 and ferrules with insulating collar according to DIN 46228 Part 4, 0.25 mm² ... 6 mm², lateral entry, trapezoidal crimp

PT 1,5/S-QUATTRO - Feed-through terminal block

3208197

<https://www.phoenixcontact.com/in/products/3208197>

CRIMPFOX 6T-F - Crimping pliers

1212038

<https://www.phoenixcontact.com/in/products/1212038>



Crimping pliers, for ferrules without insulating collar according to DIN 46228 Part 1 and ferrules with insulating collar according to DIN 46228 Part 4, 0.25 mm² ... 6 mm², front entry, trapezoidal crimp

CRIMPFOX 6S-F - Crimping pliers

1212043

<https://www.phoenixcontact.com/in/products/1212043>



Crimping pliers, for ferrules without insulating collar according to DIN 46228 Part 1 and ferrules with insulating collar according to DIN 46228 Part 4, 0.5 mm² ... 6 mm², front entry, square crimp

PT 1,5/S-QUATTRO - Feed-through terminal block



3208197

<https://www.phoenixcontact.com/in/products/3208197>

CRIMPFOX-M - Crimping pliers

1212072

<https://www.phoenixcontact.com/in/products/1212072>



Basic pliers, for accommodating dies for a wide range of type of contacts

Phoenix Contact 2023 © - all rights reserved

<https://www.phoenixcontact.com>

PHOENIX CONTACT (I) Pvt. Ltd.

A-58/2, Okhla Industrial Area, Phase - II, New Delhi-110 020

+91.1275.71420

info@phoenixcontact.co.in