

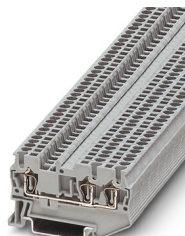
ST 1,5-TWIN - Feed-through terminal block



3031128

<https://www.phoenixcontact.com/in/products/3031128>

Please be informed that the data shown in this PDF document is generated from our Online Catalog. Please find the complete data in the user documentation. Our General Terms of Use for Downloads are valid.



Feed-through terminal block, nom. voltage: 500 V, nominal current: 17.5 A, connection method: Spring-cage connection, Rated cross section: 1.5 mm², cross section: 0.08 mm² - 1.5 mm², mounting type: NS 35/7,5, NS 35/15, color: gray

Your advantages

- The consistent double function shaft offers every opportunity for time-saving potential distribution and accommodating test accessories
- User-friendly implementation of all potential branching tasks
- Tested for railway applications
- Space-saving and practical multi-conductor connection without additional bridges

Commercial Data

Item number	3031128
Packing unit	50 pc
Minimum order quantity	50 pc
Sales Key	BE2
Product Key	BE2112
Catalog Page	Page 207 (C-1-2019)
GTIN	4017918186647
Weight per Piece (including packing)	6.34 g
Weight per Piece (excluding packing)	5.86 g
Customs tariff number	85369010
Country of origin	DE

ST 1,5-TWIN - Feed-through terminal block



3031128

<https://www.phoenixcontact.com/in/products/3031128>

Technical Data

Notes

General

Note	When establishing a connection on the open housing side of a feed-through modular terminal block of the same series and size, the block must be provided with a cover if the expected insulation voltage is >320 V.
	The max. load current must not be exceeded by the total current of all connected conductors.

Product properties

Product type	Multi-conductor terminal block
Area of application	Railway industry
	Machine building
	Plant engineering
	Process industry
Number of connections	3
Number of rows	1
Potentials	1

Insulation characteristics

Overvoltage category	III
Degree of pollution	3

Electrical properties

Rated surge voltage	6 kV
Maximum power dissipation for nominal condition	0.56 W

Connection data

Number of connections per level	3
Nominal cross section	1.5 mm ²

Level 1 above 1+2 below 1

Stripping length	8 mm ... 10 mm
Internal cylindrical gage	A1
Connection in acc. with standard	IEC 60947-7-1
Conductor cross section solid	0.08 mm ² ... 1.5 mm ²
Cross section AWG	28 ... 16 (converted acc. to IEC)
Conductor cross section flexible	0.08 mm ² ... 1.5 mm ²
Conductor cross section, flexible [AWG]	28 ... 16 (converted acc. to IEC)
Flexible conductor cross section flexible (Ferrules without plastic sleeve)	0.14 mm ² ... 1.5 mm ²
Flexible conductor cross section (ferrule with plastic sleeve)	0.14 mm ² ... 1.5 mm ²
2 conductors with the same cross section, flexible, with TWIN ferrule with plastic sleeve	0.5 mm ²

ST 1,5-TWIN - Feed-through terminal block



3031128

<https://www.phoenixcontact.com/in/products/3031128>

Nominal current	17.5 A (with 1.5 mm ² conductor cross section)
Maximum load current	17.5 A (in case of a 1.5 mm ² conductor cross section, the maximum load current must not be exceeded by the total current of all connected conductors.)
Nominal voltage	500 V
Nominal cross section	1.5 mm ²

Ex data

Rated data (ATEX/IECEx)

Identification	□ II 2 GD Ex eb IIC Gb
Operating temperature range	-60 °C ... 110 °C
Ex-certified accessories	3030488 D-ST 2,5-TWIN 3030789 ATP-ST-TWIN 3036602 DS-ST 2,5 1204504 SZF 0-0,4X2,5 3022276 CLIPFIX 35-5 3022218 CLIPFIX 35
List of bridges	Plug-in bridge / FBS 2-4 / 3030116 Plug-in bridge / FBS 3-4 / 3030129 Plug-in bridge / FBS 4-4 / 3030132 Plug-in bridge / FBS 5-4 / 3030145 Plug-in bridge / FBS 10-4 / 3030158 Plug-in bridge / FBS 20-4 / 3030352
Bridge data	16.5 A / 1.5 mm ²
Ex temperature increase	40 K (19.4 A / 1.5 mm ²)
Rated voltage	440 V
for bridging with bridge	440 V
- At bridging between non-adjacent terminal blocks	352 V
- At cut-to-length bridging with cover	220 V
- At cut-to-length bridging with partition plate	275 V
Rated insulation voltage	400 V
output	(Permanent)

Ex level General

Rated current	17.5 A
Maximum load current	17.5 A
Contact resistance	1.43 mΩ

Ex connection data General

Nominal cross section	1.5 mm ²
Rated cross section AWG	16
Connection capacity rigid	0.08 mm ² ... 1.5 mm ²
Connection capacity AWG	28 ... 16
Connection capacity flexible	0.08 mm ² ... 1.5 mm ²
Connection capacity AWG	28 ... 16

ST 1,5-TWIN - Feed-through terminal block



3031128

<https://www.phoenixcontact.com/in/products/3031128>

Dimensions

Width	4.2 mm
End cover width	2.2 mm
Height NS 35/15	44 mm
Height NS 35/7,5	36.5 mm
Height	1.437 "
Length	60.5 mm

Material specifications

Color	gray
Flammability rating according to UL 94	V0
Insulating material group	I
Insulating material	PA
Static insulating material application in cold	-60 °C
Temperature index of insulation material (DIN EN 60216-1 (VDE 0304-21))	125 °C
Relative insulation material temperature index (Elec., UL 746 B)	130 °C
Fire protection for rail vehicles (DIN EN 45545-2) R22	HL 1 - HL 3
Fire protection for rail vehicles (DIN EN 45545-2) R23	HL 1 - HL 3
Fire protection for rail vehicles (DIN EN 45545-2) R24	HL 1 - HL 3
Fire protection for rail vehicles (DIN EN 45545-2) R26	HL 1 - HL 3
Calorimetric heat release NFPA 130 (ASTM E 1354)	27,5 MJ/kg
Surface flammability NFPA 130 (ASTM E 162)	passed
Specific optical density of smoke NFPA 130 (ASTM E 662)	passed
Smoke gas toxicity NFPA 130 (SMP 800C)	passed

Electrical tests

Surge voltage test

Test voltage setpoint	7.3 kV
Result	Test passed

Temperature-rise test

Requirement temperature-rise test	Increase in temperature ≤ 45 K
Result	Test passed
	Test passed
Short-time withstand current 1.5 mm ²	0.18 kA
Result	Test passed

Power-frequency withstand voltage

Test voltage setpoint	1.89 kV
Result	Test passed

Mechanical properties

Mechanical data

ST 1,5-TWIN - Feed-through terminal block



3031128

<https://www.phoenixcontact.com/in/products/3031128>

Open side panel	Yes
-----------------	-----

Mechanical tests

Mechanical strength

Result	Test passed
--------	-------------

Attachment on the carrier

DIN rail/fixing support	NS 32/NS 35
Test force setpoint	1 N
Result	Test passed

Test for conductor damage and slackening

Rotation speed	10 (+/- 2) rpm
Revolutions	135
Conductor cross section/weight	0.14 mm ² / 0.2 kg
	0.2 mm ² / 0.2 kg
	1.5 mm ² / 0.4 kg
Result	Test passed

Environmental and real-life conditions

Aging

Temperature cycles	192
Result	Test passed

Needle-flame test

Time of exposure	30 s
Result	Test passed

Oscillation/broadband noise

Specification	DIN EN 50155 (VDE 0115-200):2018-05
Spectrum	Service life test category 2, bogie-mounted
Frequency	f ₁ = 5 Hz to f ₂ = 250 Hz
ASD level	6.12 (m/s ²) ² /Hz
Acceleration	3.12g
Test duration per axis	5 h
Test directions	X-, Y- and Z-axis
Result	Test passed

Shocks

Specification	DIN EN 50155 (VDE 0115-200):2008-03
Pulse shape	Half-sine
Acceleration	5g
Shock duration	30
Number of shocks per direction	3
Test directions	X-, Y- and Z-axis (pos. and neg.)

ST 1,5-TWIN - Feed-through terminal block



3031128

<https://www.phoenixcontact.com/in/products/3031128>

Result	Test passed
--------	-------------

Ambient conditions

Ambient temperature (operation)	-60 °C ... 105 °C (max. short-term operating temperature RTI Elec.)
Ambient temperature (storage/transport)	-25 °C ... 60 °C (for a short time, not exceeding 24 h, -60 °C to +70 °C)
Ambient temperature (assembly)	-5 °C ... 70 °C
Ambient temperature (actuation)	-5 °C ... 70 °C
Permissible humidity (storage/transport)	30 % ... 70 %

Standards and regulations

Connection in acc. with standard	IEC 60947-7-1
----------------------------------	---------------

Mounting

Mounting type	NS 35/7,5
	NS 35/15

ST 1,5-TWIN - Feed-through terminal block

3031128

<https://www.phoenixcontact.com/in/products/3031128>



Drawings

Circuit diagram



ST 1,5-TWIN - Feed-through terminal block



3031128

<https://www.phoenixcontact.com/in/products/3031128>

Approvals



CSA

Approval ID: 13631



IECEE CB Scheme

Approval ID: DE1-63027_A1



LR

Approval ID: LR2014888TA



KR

Approval ID: HMB17372-EL002



NK

Approval ID: 09 ME 140



RS

Approval ID: 22.44.01.00083.250



BV

Approval ID: 13403/D0 BV



VDE Zeichengenehmigung

Approval ID: 40009031



cULus Recognized

Approval ID: E60425



ATEX

Approval ID: KEMA01ATEX2129U



EAC Ex

Approval ID: RU C-DE.HA91.B.00066



IECEx

Approval ID: IECEx KEM 06.0043U

ST 1,5-TWIN - Feed-through terminal block



3031128

<https://www.phoenixcontact.com/in/products/3031128>



CCC

Approval ID: 2020322313000621



NEPSI

Approval ID: GYJ20.1193U



UKCA-EX

Approval ID: DEKRA 21UKEX0302U

ST 1,5-TWIN - Feed-through terminal block



3031128

<https://www.phoenixcontact.com/in/products/3031128>

Classifications

ECLASS

ECLASS-10.0.1	27141120
ECLASS-11.0	27141120

ETIM

ETIM 8.0	EC000897
----------	----------

UNSPSC

UNSPSC 21.0	39121400
-------------	----------

ST 1,5-TWIN - Feed-through terminal block



3031128

<https://www.phoenixcontact.com/in/products/3031128>

Environmental Product Compliance

China RoHS	Environmentally friendly use period: unlimited = EFUP-e
	No hazardous substances above threshold values

ST 1,5-TWIN - Feed-through terminal block



3031128

<https://www.phoenixcontact.com/in/products/3031128>

Accessories



Note: Applying some accessories below might limit this product.

FBS 2-4 - Plug-in bridge

3030116

<https://www.phoenixcontact.com/in/products/3030116>



Plug-in bridge, pitch: 4.2 mm, number of positions: 2, color: red



Max. current carrying capacity: 17.5 A

FBS 3-4 - Plug-in bridge

3030129

<https://www.phoenixcontact.com/in/products/3030129>



Plug-in bridge, pitch: 4.2 mm, number of positions: 3, color: red



Max. current carrying capacity: 17.5 A

ST 1,5-TWIN - Feed-through terminal block



3031128

<https://www.phoenixcontact.com/in/products/3031128>


FBS 4-4 - Plug-in bridge

3030132

<https://www.phoenixcontact.com/in/products/3030132>



Plug-in bridge, pitch: 4.2 mm, number of positions: 4, color: red

 Max. current carrying capacity: 17.5 A


FBS 5-4 - Plug-in bridge

3030145

<https://www.phoenixcontact.com/in/products/3030145>



Plug-in bridge, pitch: 4.2 mm, number of positions: 5, color: red

 Max. current carrying capacity: 17.5 A

ST 1,5-TWIN - Feed-through terminal block



3031128

<https://www.phoenixcontact.com/in/products/3031128>


FBS 10-4 - Plug-in bridge

3030158

<https://www.phoenixcontact.com/in/products/3030158>



Plug-in bridge, pitch: 4.2 mm, number of positions: 10, color: red

 Max. current carrying capacity: 17.5 A

FBS 20-4 - Plug-in bridge

3030352

<https://www.phoenixcontact.com/in/products/3030352>



Plug-in bridge, pitch: 4.2 mm, number of positions: 20, color: red

 Max. current carrying capacity: 17.5 A

ST 1,5-TWIN - Feed-through terminal block



3031128

<https://www.phoenixcontact.com/in/products/3031128>


FBS 2-4 BU - Plug-in bridge

3030117

<https://www.phoenixcontact.com/in/products/3030117>



Plug-in bridge, pitch: 4.2 mm, number of positions: 2, color: blue

 Max. current carrying capacity: 17.5 A

FBS 3-4 BU - Plug-in bridge

3030130

<https://www.phoenixcontact.com/in/products/3030130>



Plug-in bridge, pitch: 4.2 mm, number of positions: 3, color: blue

 Max. current carrying capacity: 17.5 A

ST 1,5-TWIN - Feed-through terminal block



3031128

<https://www.phoenixcontact.com/in/products/3031128>


FBS 4-4 BU - Plug-in bridge

3030133

<https://www.phoenixcontact.com/in/products/3030133>



Plug-in bridge, pitch: 4.2 mm, number of positions: 4, color: blue

 Max. current carrying capacity: 17.5 A


FBS 5-4 BU - Plug-in bridge

3030146

<https://www.phoenixcontact.com/in/products/3030146>



Plug-in bridge, pitch: 4.2 mm, number of positions: 5, color: blue

 Max. current carrying capacity: 17.5 A

ST 1,5-TWIN - Feed-through terminal block



3031128

<https://www.phoenixcontact.com/in/products/3031128>


FBS 10-4 BU - Plug-in bridge

3036851

<https://www.phoenixcontact.com/in/products/3036851>



Plug-in bridge, pitch: 4.2 mm, number of positions: 10, color: blue

 Max. current carrying capacity: 17.5 A


FBS 20-4 BU - Plug-in bridge

3030353

<https://www.phoenixcontact.com/in/products/3030353>



Plug-in bridge, pitch: 4.2 mm, number of positions: 20, color: blue

 Max. current carrying capacity: 17.5 A

ST 1,5-TWIN - Feed-through terminal block



3031128

<https://www.phoenixcontact.com/in/products/3031128>

FBS 2-4 GY - Plug-in bridge

3030118

<https://www.phoenixcontact.com/in/products/3030118>



Plug-in bridge, pitch: 4.2 mm, number of positions: 2, color: gray

 Max. current carrying capacity: 17.5 A


FBS 3-4 GY - Plug-in bridge

3030131

<https://www.phoenixcontact.com/in/products/3030131>



Plug-in bridge, pitch: 4.2 mm, number of positions: 3, color: gray

 Max. current carrying capacity: 17.5 A

ST 1,5-TWIN - Feed-through terminal block



3031128

<https://www.phoenixcontact.com/in/products/3031128>


FBS 4-4 GY - Plug-in bridge

3030134

<https://www.phoenixcontact.com/in/products/3030134>



Plug-in bridge, pitch: 4.2 mm, number of positions: 4, color: gray

 Max. current carrying capacity: 17.5 A

FBS 5-4 GY - Plug-in bridge

3030147

<https://www.phoenixcontact.com/in/products/3030147>



Plug-in bridge, pitch: 4.2 mm, number of positions: 5, color: gray

 Max. current carrying capacity: 17.5 A

ST 1,5-TWIN - Feed-through terminal block



3031128

<https://www.phoenixcontact.com/in/products/3031128>

RB ST (2,5/4)-1,5 - Reducing bridge

3038943

<https://www.phoenixcontact.com/in/products/3038943>



Reducing bridge, pitch: 7.1 mm, number of positions: 2, length: 23 mm, color: red

 Max. current carrying capacity: 24 A

B-STIFT - Marker pen

1051993

<https://www.phoenixcontact.com/in/products/1051993>



Marker pen, for manual labeling of unprinted Zack strips, smear-proof and waterproof, line thickness 0.5 mm

ST 1,5-TWIN - Feed-through terminal block

3031128

<https://www.phoenixcontact.com/in/products/3031128>



X-PEN 0,35 - Marker pen

0811228

<https://www.phoenixcontact.com/in/products/0811228>



Marker pen without ink cartridge, for manual labeling of markers, labeling extremely wipe-proof, line thickness 0.35 mm

D-ST 2,5-TWIN - End cover

3030488

<https://www.phoenixcontact.com/in/products/3030488>

End cover, length: 60.5 mm, width: 2.2 mm, height: 29 mm, color: gray



ST 1,5-TWIN - Feed-through terminal block



3031128

<https://www.phoenixcontact.com/in/products/3031128>

DS-ST 2,5 - Cover segment

3036602

<https://www.phoenixcontact.com/in/products/3036602>



End cover segments, large segment: 32.25 x 13.83 x 0.9, small segment: 22.65 x 11.65 x 0.9, color: gray

ATP-ST-TWIN - Partition plate

3030789

<https://www.phoenixcontact.com/in/products/3030789>



Partition plate, length: 75.2 mm, width: 2 mm, height: 39 mm, color: gray

ST 1,5-TWIN - Feed-through terminal block



3031128

<https://www.phoenixcontact.com/in/products/3031128>

SZF 0-0,4X2,5 - Screwdriver

1204504

<https://www.phoenixcontact.com/in/products/1204504>



Actuation tool, for ST terminal blocks, also suitable for use as a bladed screwdriver, size: 0.4 x 2.5 x 75 mm, 2-component grip, with non-slip grip

RPS - Reducing plug

0201647

<https://www.phoenixcontact.com/in/products/0201647>



Reducing plug, color: gray

ST 1,5-TWIN - Feed-through terminal block



3031128

<https://www.phoenixcontact.com/in/products/3031128>

D-ST 2,5-TWIN-0,8 OG - End cover

3030512

<https://www.phoenixcontact.com/in/products/3030512>

End cover, length: 60.5 mm, width: 0.8 mm, height: 29 mm, color: orange



ST-IL - Mounting material

3039900

<https://www.phoenixcontact.com/in/products/3039900>

Operating decal for the ST terminal block



ST 1,5-TWIN - Feed-through terminal block

3031128

<https://www.phoenixcontact.com/in/products/3031128>



NS 35/ 7,5 PERF 2000MM - DIN rail perforated

0801733

<https://www.phoenixcontact.com/in/products/0801733>



DIN rail perforated, acc. to EN 60715, material: Steel, galvanized, passivated with a thick layer, Standard profile, color: silver, Pack of 25 (50 m)

NS 35/ 7,5 UNPERF 2000MM - DIN rail, unperforated

0801681

<https://www.phoenixcontact.com/in/products/0801681>



DIN rail, unperforated, acc. to EN 60715, material: Steel, galvanized, passivated with a thick layer, Standard profile, color: silver, Pack of 25 (50 m)

ST 1,5-TWIN - Feed-through terminal block

3031128

<https://www.phoenixcontact.com/in/products/3031128>



NS 35/ 7,5 WH PERF 2000MM - DIN rail perforated

1204119

<https://www.phoenixcontact.com/in/products/1204119>



DIN rail perforated, acc. to EN 60715, material: Steel, Galvanized, white passivated, Standard profile, color: silver, Pack of 25 (50 m)

NS 35/ 7,5 WH UNPERF 2000MM-VPE 10 - DIN rail, unperforated

1204122

<https://www.phoenixcontact.com/in/products/1204122>



DIN rail, unperforated, acc. to EN 60715, material: Steel, Galvanized, white passivated, Standard profile, color: silver, Pack of 10 (20 m)

ST 1,5-TWIN - Feed-through terminal block

3031128

<https://www.phoenixcontact.com/in/products/3031128>



NS 35/ 7,5 AL UNPERF 2000MM - DIN rail, unperforated

0801704

<https://www.phoenixcontact.com/in/products/0801704>



DIN rail, unperforated, acc. to EN 60715, material: Aluminum, uncoated, Standard profile, color: silver, Pack of 25 (50 m)

NS 35/ 7,5 ZN PERF 2000MM - DIN rail perforated

1206421

<https://www.phoenixcontact.com/in/products/1206421>



DIN rail perforated, acc. to EN 60715, material: Steel, galvanized, Standard profile, color: silver, Pack of 25 (50 m)

ST 1,5-TWIN - Feed-through terminal block

3031128

<https://www.phoenixcontact.com/in/products/3031128>



NS 35/ 7,5 ZN UNPERF 2000MM - DIN rail, unperforated

1206434

<https://www.phoenixcontact.com/in/products/1206434>



DIN rail, unperforated, acc. to EN 60715, material: Steel, galvanized, Standard profile, color: silver, Pack of 25 (50 m)

NS 35/ 7,5 CU UNPERF 2000MM-VPE 10 - DIN rail, unperforated

0801762

<https://www.phoenixcontact.com/in/products/0801762>



DIN rail, unperforated, acc. to EN 60715, material: Copper, uncoated, Standard profile, color: copper-colored, Pack of 10 (20 m)

ST 1,5-TWIN - Feed-through terminal block

3031128

<https://www.phoenixcontact.com/in/products/3031128>



NS 35/ 7,5 CAP - End cap

1206560

<https://www.phoenixcontact.com/in/products/1206560>

DIN rail end piece, for DIN rail NS 35/7.5



NS 35/15 PERF 2000MM - DIN rail perforated

1201730

<https://www.phoenixcontact.com/in/products/1201730>



DIN rail perforated, similar to EN 60715, material: Steel, galvanized, passivated with a thick layer, Standard profile, color: silver, Pack of 25 (50 m)

ST 1,5-TWIN - Feed-through terminal block



3031128

<https://www.phoenixcontact.com/in/products/3031128>

NS 35/15 UNPERF 2000MM - DIN rail, unperforated

1201714

<https://www.phoenixcontact.com/in/products/1201714>



DIN rail, unperforated, similar to EN 60715, material: Steel, galvanized, passivated with a thick layer, Standard profile, color: silver, Pack of 25 (50 m)

NS 35/15 WH PERF 2000MM - DIN rail perforated

0806602

<https://www.phoenixcontact.com/in/products/0806602>



DIN rail perforated, similar to EN 60715, material: Steel, Galvanized, white passivated, Standard profile, color: white, Pack of 25 (50 m)

ST 1,5-TWIN - Feed-through terminal block

3031128

<https://www.phoenixcontact.com/in/products/3031128>



NS 35/15 WH UNPERF 2000MM-VPE 10 - DIN rail, unperforated

1204135

<https://www.phoenixcontact.com/in/products/1204135>



DIN rail, unperforated, similar to EN 60715, material: Steel, Galvanized, white passivated, Standard profile, color: silver, Pack of 10 (20 m)

NS 35/15 AL UNPERF 2000MM - DIN rail, unperforated

1201756

<https://www.phoenixcontact.com/in/products/1201756>



DIN rail, unperforated, similar to EN 60715, material: Aluminum, uncoated, Standard profile, color: silver

ST 1,5-TWIN - Feed-through terminal block

3031128

<https://www.phoenixcontact.com/in/products/3031128>



NS 35/15 ZN PERF 2000MM - DIN rail perforated

1206599

<https://www.phoenixcontact.com/in/products/1206599>



DIN rail perforated, similar to EN 60715, material: Steel, galvanized, Standard profile, color: silver, Pack of 25 (50 m)

NS 35/15 ZN UNPERF 2000MM - DIN rail, unperforated

1206586

<https://www.phoenixcontact.com/in/products/1206586>



DIN rail, unperforated, similar to EN 60715, material: Steel, galvanized, Standard profile, color: silver, Pack of 25 (50 m)

ST 1,5-TWIN - Feed-through terminal block

3031128

<https://www.phoenixcontact.com/in/products/3031128>



NS 35/15 CU UNPERF 2000MM-VPE 10 - DIN rail, unperforated

1201895

<https://www.phoenixcontact.com/in/products/1201895>



DIN rail, unperforated, similar to EN 60715, material: Copper, uncoated, Standard profile, color: copper-colored, Pack of 10 (20 m)

NS 35/15 CAP - End cap

1206573

<https://www.phoenixcontact.com/in/products/1206573>

DIN rail end piece, for DIN rail NS 35/15



ST 1,5-TWIN - Feed-through terminal block

3031128

<https://www.phoenixcontact.com/in/products/3031128>



NS 35/15-2,3 UNPERF 2000MM-VPE 10 - DIN rail, unperforated

1201798

<https://www.phoenixcontact.com/in/products/1201798>



DIN rail, unperforated, acc. to EN 60715, material: Steel, galvanized, passivated with a thick layer, Standard profile 2.3 mm, color: silver, Pack of 10 (20 m)

ZB 4 :UNBEDRUCKT - Zack marker strip

0805001

<https://www.phoenixcontact.com/in/products/0805001>



Zack marker strip, Strip, white, unlabeled, can be labeled with: PLOTMARK, CMS-P1-PLOTTER, mounting type: snapped, for terminal block width: 4.2 mm, lettering field size: 4.2 x 10.5 mm, Number of individual labels: 10

ST 1,5-TWIN - Feed-through terminal block



3031128

<https://www.phoenixcontact.com/in/products/3031128>

ZB 4 CUS - Zack marker strip

0824951

<https://www.phoenixcontact.com/in/products/0824951>

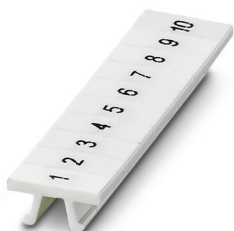


Zack marker strip, can be ordered: Strip, white, labeled according to customer specifications, mounting type: snap into tall marker groove, for terminal block width: 4.2 mm, lettering field size: 4.2 x 10.5 mm, Number of individual labels: 10

ZB 4,LGS:FORTL.ZAHLEN - Zack marker strip

0805739

<https://www.phoenixcontact.com/in/products/0805739>



Zack marker strip, Strip, white, labeled, printed horizontally: consecutive numbers 1 ... 10, 11 ... 20, etc. up to 91 ... 100, mounting type: snapped, for terminal block width: 4.2 mm, lettering field size: 4.2 x 10.5 mm, Number of individual labels: 10

ST 1,5-TWIN - Feed-through terminal block



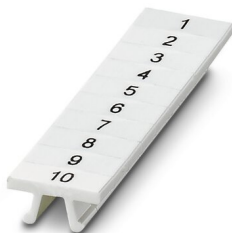
3031128

<https://www.phoenixcontact.com/in/products/3031128>

ZB 4,QR:FORTL.ZAHLEN - Zack marker strip

0805807

<https://www.phoenixcontact.com/in/products/0805807>



Zack marker strip, Strip, white, labeled, Printed vertically: consecutive numbers 1 ... 10, 11 ... 20, etc. up to 91 ... 100, mounting type: snapped, for terminal block width: 4.2 mm, lettering field size: 4.2 x 10.5 mm, Number of individual labels: 10

UC-TM 4 - Marker for terminal blocks

0818111

<https://www.phoenixcontact.com/in/products/0818111>



Marker for terminal blocks, Sheet, white, unlabeled, can be labeled with: BLUEMARK ID COLOR, BLUEMARK ID, BLUEMARK CLED, PLOTMARK, CMS-P1-PLOTTER, mounting type: snapped, for terminal block width: 4.2 mm, lettering field size: 3.6 x 10.5 mm, Number of individual labels: 120

ST 1,5-TWIN - Feed-through terminal block

3031128

<https://www.phoenixcontact.com/in/products/3031128>



UC-TM 4 CUS - Marker for terminal blocks

0824573

<https://www.phoenixcontact.com/in/products/0824573>



Marker for terminal blocks, can be ordered: by sheet, white, labeled according to customer specifications, mounting type: snap into tall marker groove, for terminal block width: 4.2 mm, lettering field size: 3.6 x 10.5 mm, Number of individual labels: 120

UCT-TM 4 - Marker for terminal blocks

0828732

<https://www.phoenixcontact.com/in/products/0828732>



Marker for terminal blocks, Sheet, white, unlabeled, can be labeled with: TOPMARK NEO, TOPMARK LASER, BLUEMARK ID COLOR, BLUEMARK ID, BLUEMARK CLED, THERMOMARK PRIME, THERMOMARK CARD 2.0, THERMOMARK CARD, mounting type: snapped, for terminal block width: 4.2 mm, lettering field size: 3.6 x 10.5 mm, Number of individual labels: 84

ST 1,5-TWIN - Feed-through terminal block



3031128

<https://www.phoenixcontact.com/in/products/3031128>

UCT-TM 4 CUS - Marker for terminal blocks

0829588

<https://www.phoenixcontact.com/in/products/0829588>



Marker for terminal blocks, can be ordered: by sheet, white, labeled according to customer specifications, mounting type: snap into tall marker groove, for terminal block width: 4.2 mm, lettering field size: 3.6 x 10.5 mm, Number of individual labels: 84

STP 4-2-ZB - Marker carriers

3038613

<https://www.phoenixcontact.com/in/products/3038613>



Marker carriers, snaps into ST 1,5... spring-cage terminal blocks, can be marked with UC-TM 4, UC-TMF 4, UCT-TM 4, UCT-TMF 4, ZB 4, or ZBF 4, gray, unlabeled, mounting type: snapped, lettering field size: 4 x 10.5 mm

ST 1,5-TWIN - Feed-through terminal block



3031128

<https://www.phoenixcontact.com/in/products/3031128>

ZBF 4:UNBEDRUCKT - Zack Marker strip, flat

0808587

<https://www.phoenixcontact.com/in/products/0808587>



Zack Marker strip, flat, Strip, white, unlabeled, can be labeled with: CMS-P1-PLOTTER, PLOTMARK, mounting type: snapped, for terminal block width: 4 mm, lettering field size: 4.2 x 5.2 mm, Number of individual labels: 10

ZBF 4 CUS - Zack Marker strip, flat

0825023

<https://www.phoenixcontact.com/in/products/0825023>



Zack Marker strip, flat, can be ordered: Strip, white, labeled according to customer specifications, mounting type: snap into flat marker groove, for terminal block width: 4.2 mm, lettering field size: 4.2 x 5.2 mm, Number of individual labels: 10

ST 1,5-TWIN - Feed-through terminal block



3031128

<https://www.phoenixcontact.com/in/products/3031128>

ZBF 4,LGS:FORTL.ZAHLEN - Zack Marker strip, flat

0808626

<https://www.phoenixcontact.com/in/products/0808626>

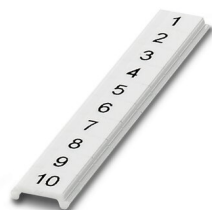


Zack Marker strip, flat, Strip, white, labeled, printed horizontally: consecutive numbers 1 ... 10, 11 ... 20, etc. up to 91 ... 100, mounting type: snapped, for terminal block width: 4 mm, lettering field size: 4.2 x 5.2 mm, Number of individual labels: 10

ZBF 4,QR:FORTL.ZAHLEN - Zack Marker strip, flat

0808820

<https://www.phoenixcontact.com/in/products/0808820>



Zack Marker strip, flat, Strip, white, labeled, Printed vertically: consecutive numbers 1 ... 10, 11 ... 20, etc. up to 91 ... 100, mounting type: snapped, for terminal block width: 4 mm, lettering field size: 4.2 x 5.2 mm, Number of individual labels: 10

ST 1,5-TWIN - Feed-through terminal block



3031128

<https://www.phoenixcontact.com/in/products/3031128>

ZBF 4,LGS:GERADE ZAHLEN - Zack Marker strip, flat

0810818

<https://www.phoenixcontact.com/in/products/0810818>



Zack Marker strip, flat, Strip, white, labeled, printed horizontally: consecutive even numbers 2 ... 20, 22 ... 40, etc. up to 82 ... 100, mounting type: snapped, for terminal block width: 4 mm, lettering field size: 5.15 x 4.15 mm, Number of individual labels: 10

ZBF 4,LGS:UNGERADE ZAHLEN - Zack Marker strip, flat

0810850

<https://www.phoenixcontact.com/in/products/0810850>



Zack Marker strip, flat, Strip, white, labeled, printed horizontally: Odd numbers 1 - 19, 21 - 39, etc. up to 81 - 99, mounting type: snapped, for terminal block width: 4 mm, lettering field size: 5.15 x 4.15 mm, Number of individual labels: 10

ST 1,5-TWIN - Feed-through terminal block



3031128

<https://www.phoenixcontact.com/in/products/3031128>

UC-TMF 4 - Marker for terminal blocks

0818166

<https://www.phoenixcontact.com/in/products/0818166>



Marker for terminal blocks, Sheet, white, unlabeled, can be labeled with: BLUEMARK ID COLOR, BLUEMARK ID, BLUEMARK CLED, PLOTMARK, CMS-P1-PLOTTER, mounting type: snapped, for terminal block width: 4.2 mm, lettering field size: 3.6 x 5.1 mm, Number of individual labels: 120

UC-TMF 4 CUS - Marker for terminal blocks

0824630

<https://www.phoenixcontact.com/in/products/0824630>



Marker for terminal blocks, can be ordered: by sheet, white, labeled according to customer specifications, mounting type: snap into flat marker groove, for terminal block width: 4.2 mm, lettering field size: 3.6 x 5.1 mm, Number of individual labels: 120

ST 1,5-TWIN - Feed-through terminal block



3031128

<https://www.phoenixcontact.com/in/products/3031128>

UCT-TMF 4 - Marker for terminal blocks

0828742

<https://www.phoenixcontact.com/in/products/0828742>



Marker for terminal blocks, Sheet, white, unlabeled, can be labeled with: TOPMARK NEO, TOPMARK LASER, BLUEMARK ID COLOR, BLUEMARK ID, BLUEMARK CLED, THERMOMARK PRIME, THERMOMARK CARD 2.0, THERMOMARK CARD, mounting type: snapped, for terminal block width: 4.2 mm, lettering field size: 3.4 x 4.7 mm, Number of individual labels: 90

UCT-TMF 4 CUS - Marker for terminal blocks

0829651

<https://www.phoenixcontact.com/in/products/0829651>



Marker for terminal blocks, can be ordered: by sheet, white, labeled according to customer specifications, mounting type: snap into flat marker groove, for terminal block width: 4.2 mm, lettering field size: 3.4 x 4.7 mm, Number of individual labels: 90

ST 1,5-TWIN - Feed-through terminal block



3031128

<https://www.phoenixcontact.com/in/products/3031128>

MPS-MT - Test plugs

0201744

<https://www.phoenixcontact.com/in/products/0201744>



Test plugs, with solder connection up to 1 mm² conductor cross section, color: gray

MPS-IH WH - Insulating sleeve

0201663

<https://www.phoenixcontact.com/in/products/0201663>

Insulating sleeve, color: white



ST 1,5-TWIN - Feed-through terminal block

3031128

<https://www.phoenixcontact.com/in/products/3031128>



MPS-IH RD - Insulating sleeve

0201676

<https://www.phoenixcontact.com/in/products/0201676>

Insulating sleeve, color: red



MPS-IH BU - Insulating sleeve

0201689

<https://www.phoenixcontact.com/in/products/0201689>

Insulating sleeve, color: blue



ST 1,5-TWIN - Feed-through terminal block



3031128

<https://www.phoenixcontact.com/in/products/3031128>

MPS-IH YE - Insulating sleeve

0201692

<https://www.phoenixcontact.com/in/products/0201692>

Insulating sleeve, color: yellow



MPS-IH GN - Insulating sleeve

0201702

<https://www.phoenixcontact.com/in/products/0201702>

Insulating sleeve, color: green



ST 1,5-TWIN - Feed-through terminal block



3031128

<https://www.phoenixcontact.com/in/products/3031128>

MPS-IH GY - Insulating sleeve

0201728

<https://www.phoenixcontact.com/in/products/0201728>

Insulating sleeve, color: gray



MPS-IH BK - Insulating sleeve

0201731

<https://www.phoenixcontact.com/in/products/0201731>

Insulating sleeve, color: black



ST 1,5-TWIN - Feed-through terminal block



3031128

<https://www.phoenixcontact.com/in/products/3031128>

ISH 1,5/0,2 - Insulating sleeve

3206131

<https://www.phoenixcontact.com/in/products/3206131>

Insulating sleeve, color: white



ISH 1,5/0,5 - Insulating sleeve

3031034

<https://www.phoenixcontact.com/in/products/3031034>

Insulating sleeve, color: gray



ST 1,5-TWIN - Feed-through terminal block



3031128

<https://www.phoenixcontact.com/in/products/3031128>

PAI-4 - Test adapter

3030925

<https://www.phoenixcontact.com/in/products/3030925>



Test adapter, Touch proof against unintentional direct contact according to DIN EN 50274 when plugged in, for 4 mm test plug and terminal blocks with 4.2 mm pitch, color: gray

PS-4 - Test plugs

3030970

<https://www.phoenixcontact.com/in/products/3030970>



Test plugs, Modular test plug, color: red

ST 1,5-TWIN - Feed-through terminal block



3031128

<https://www.phoenixcontact.com/in/products/3031128>

DP PS-4 - Spacer plate

3036712

<https://www.phoenixcontact.com/in/products/3036712>



Spacer plate, length: 22.4 mm, width: 4.2 mm, height: 29 mm, number of positions: 1, color: red

CLIPFIX 35 - End clamp

3022218

<https://www.phoenixcontact.com/in/products/3022218>



Quick mounting end clamp for NS 35/7,5 DIN rail or NS 35/15 DIN rail, with marking option, width: 9.5 mm, color: gray

ST 1,5-TWIN - Feed-through terminal block



3031128

<https://www.phoenixcontact.com/in/products/3031128>

CLIPFIX 35-5 - End clamp

3022276

<https://www.phoenixcontact.com/in/products/3022276>

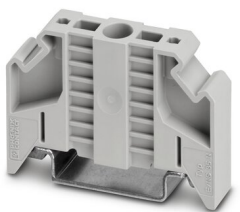


Quick mounting end clamp for NS 35/7,5 DIN rail or NS 35/15 DIN rail, with marking option, with parking option for FBS...5, FBS...6, KSS 5, KSS 6, width: 5.15 mm, color: gray

E/NS 35 N - End clamp

0800886

<https://www.phoenixcontact.com/in/products/0800886>



End clamp, width: 9.5 mm, color: gray

ST 1,5-TWIN - Feed-through terminal block



3031128

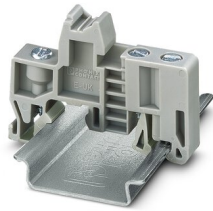
<https://www.phoenixcontact.com/in/products/3031128>

E/UK - End clamp

1201442

<https://www.phoenixcontact.com/in/products/1201442>

End clamp, material: PA, color: gray, Mounting on a DIN rail NS 32 or NS 35



E/UK 1 - End clamp

1201413

<https://www.phoenixcontact.com/in/products/1201413>

End clamps, for supporting the ends of double-level and three-level terminal blocks, width: 10 mm, color: gray



Phoenix Contact 2023 © - all rights reserved
<https://www.phoenixcontact.com>

PHOENIX CONTACT (I) Pvt. Ltd.
A-58/2, Okhla Industrial Area, Phase - II, New Delhi-110 020

+91.1275.71420
info@phoenixcontact.co.in