

## Sample set - SAMPLE PTQ 0,3/ 2-2,5 THR R32 - 1799099

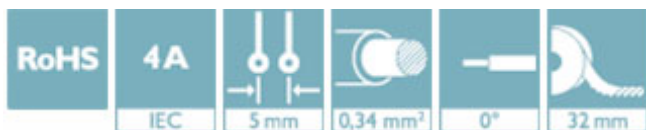
Please be informed that the data shown in this PDF Document is generated from our Online Catalog. Please find the complete data in the user's documentation. Our General Terms of Use for Downloads are valid (<http://phoenixcontact.com/download>)




PCB terminal block, nominal current: 4 A, nom. voltage: 160 V, pitch: 5 mm, number of positions: 2, color: black

### Your advantages

- Connection without conductor pretreatment for huge time savings
- Finger-operated QUICKON insulation displacement connection enables repeated conductor connection
- Designed for integration into the SMT soldering process
- Supplied in tape-on-reel packing according to IEC 60286-3 for automated mounting
- Anti-rotation pin supports positioning on the PCB



### Key Commercial Data

Packing unit	1
GTIN	 4 046356 655828
GTIN	4046356655828
Custom tariff number	85369010

### Technical data

#### Dimensions

Pitch	5 mm
-------	------

#### General

Range of articles	PTQ 0,3/..-THR
Rated voltage (III/3)	160 V
Nominal current $I_N$	4 A
Nominal cross section	0.34 mm <sup>2</sup>
Maximum load current	4 A
Flammability rating according to UL 94	V0
Number of positions	2

# Sample set - SAMPLE PTQ 0,3/ 2-2,5 THR R32 - 1799099

## Technical data

### Connection data

Conductor cross section solid min.	0.14 mm <sup>2</sup>
Conductor cross section solid max.	0.34 mm <sup>2</sup>
Conductor cross section flexible min.	0.14 mm <sup>2</sup>
Conductor cross section flexible max.	0.34 mm <sup>2</sup>
Conductor cross section AWG min.	26
Conductor cross section AWG max.	22

### Standards and Regulations

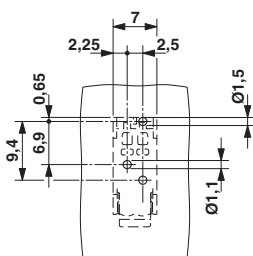
Flammability rating according to UL 94	V0
--	----

### Environmental Product Compliance

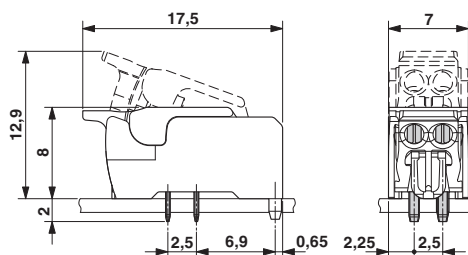
China RoHS	Environmentally friendly use period: unlimited = EFUP-e
	No hazardous substances above threshold values

## Drawings

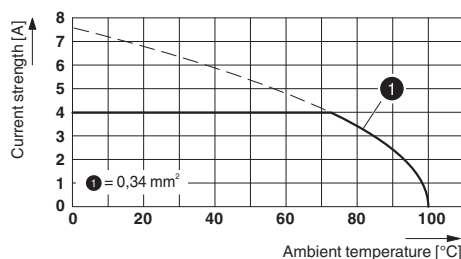
Drilling diagram



Dimensional drawing



Diagram



## Classifications

### eCl@ss

eCl@ss 4.0	272607xx
eCl@ss 4.1	27141109
eCl@ss 5.0	27141190
eCl@ss 5.1	27261100
eCl@ss 6.0	27261100

## Sample set - SAMPLE PTQ 0,3/ 2-2,5 THR R32 - 1799099

### Classifications

#### eCl@ss

eCl@ss 7.0	27440401
eCl@ss 8.0	27440401
eCl@ss 9.0	27440401

#### ETIM

ETIM 3.0	EC001121
ETIM 4.0	EC002498
ETIM 5.0	EC002643
ETIM 6.0	EC002643

#### UNSPSC

UNSPSC 6.01	30211801
UNSPSC 7.0901	39121432
UNSPSC 11	34131203
UNSPSC 12.01	39121432
UNSPSC 13.2	39121432

### Approvals

#### Approvals

---

Approvals

EAC

---

Ex Approvals

---

#### Approval details

EAC		B.01742
-----	--	---------

### Accessories

#### Additional products

PCB terminal block - PTQ 0,3/ 2-2,5 THR R32 - 1702610



PCB terminal block, nominal current: 4 A, nom. voltage: 160 V, pitch: 2.5 mm, number of positions: 2, connection method: Displacement connection, mounting: THR soldering, conductor/PCB connection direction: 0 °, color: black

## Sample set - SAMPLE PTQ 0,3/ 2-2,5 THR R32 - 1799099

### Accessories

---

---

Phoenix Contact 2019 © - all rights reserved  
<http://www.phoenixcontact.com>