

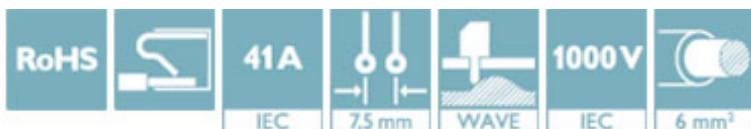
PCB terminal block - SPT 5/ 2-V-7,5-ZB BK/SVT - 1832522

Please be informed that the data shown in this PDF Document is generated from our Online Catalog. Please find the complete data in the user's documentation. Our General Terms of Use for Downloads are valid (<http://phoenixcontact.com/download>)




PCB terminal block, nominal current: 41 A, pitch: 7.5 mm, number of positions: 2, connection method: Push-in spring connection, mounting: Wave soldering, conductor/PCB connection direction: 90 °, color: multi-color

The figure shows a 5-pos. version of the product



Key Commercial Data

Packing unit	1
GTIN	 4 046356 902830
GTIN	4046356902830
Custom tariff number	85369010

Technical data

Item properties

Number of positions	2
Pin layout	Zigzag pinning W

Dimensions for the product

Length [l]	18.5 mm
Width [w]	16.8 mm
Height [h]	28.75 mm
Pitch	7.5 mm
Height (without solder pin)	24.15 mm
Solder pin [P]	4.6 mm
Pin spacing	14 mm
Dimension a	7.5 mm

Dimensions for PCB design

Hole diameter	2.1 mm
Pin spacing	14 mm

PCB terminal block - SPT 5/ 2-V-7,5-ZB BK/SVT - 1832522

Technical data

Packaging information

Type of packaging	packed in cardboard
Pieces per package	50
Denomination packing units	Pcs.

Air clearances and creepage distances

Voltage	800 V
---------	-------

Standards and Regulations

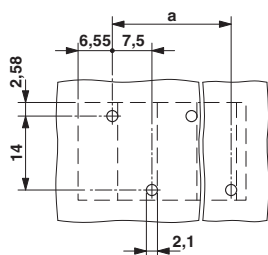
Connection in acc. with standard	EN-VDE
Flammability rating according to UL 94	V0

Environmental Product Compliance

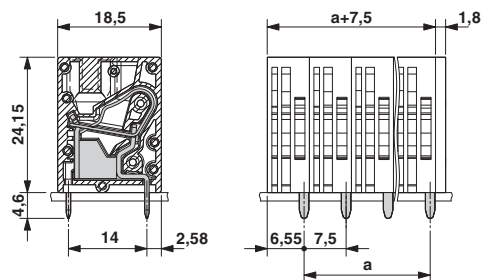
China RoHS	Environmentally friendly use period: unlimited = EFUP-e
	No hazardous substances above threshold values

Drawings

Drilling diagram



Dimensional drawing



Classifications

eCl@ss

eCl@ss 5.1	27261100
eCl@ss 6.0	27261100
eCl@ss 7.0	27440401
eCl@ss 8.0	27440401
eCl@ss 9.0	27440401

ETIM

ETIM 4.0	EC002643
ETIM 5.0	EC002643
ETIM 6.0	EC002643

UNSPSC

UNSPSC 13.2	39121432
-------------	----------

PCB terminal block - SPT 5/ 2-V-7,5-ZB BK/SVT - 1832522

Approvals


Approvals


Approvals

IECEE CB Scheme / SEV / EAC / cULus Recognized


Ex Approvals

Approval details

IECEE CB Scheme		http://www.iecee.org/	CH-7429
Nominal voltage UN	1000 V		
Nominal current IN	41 A		
mm ² /AWG/kcmil	6		

SEV		https://www.electrosuisse.ch/de/meta/shop/produktezertifikate.html	IK-3150
Nominal voltage UN	1000 V		
Nominal current IN	41 A		
mm ² /AWG/kcmil	6		

EAC		B.01742	
-----	---	---------	--

cULus Recognized		http://database.ul.com/cgi-bin/XYV/template/LISEXT/1FRAME/index.htm	E60425-20061129
	B	C	
Nominal voltage UN	600 V	600 V	
Nominal current IN	36 A	36 A	
mm ² /AWG/kcmil	24-8	24-8	