

## Device connector, rear mounting - RC-1LS1NP24200 - 1621702

Please be informed that the data shown in this PDF Document is generated from our Online Catalog. Please find the complete data in the user's documentation. Our General Terms of Use for Downloads are valid (<http://phoenixcontact.com/download>)




Device connector for rear wall, straight, shielded: yes, Screw locking, M23, No. of pos.: 16+3, type of contact: Socket, Solder-in connection, Radial O-ring, 4x M2.5, Panel thickness min.: 2.7 mm, Panel thickness max.: 3.5 mm

The figure shows the 12-pos. product version



### Key Commercial Data

Packing unit	1
GTIN	 4 046356 611084
GTIN	4046356611084
Custom tariff number	85366990

### Technical data

#### Data of the insulating body

Coding	N
Insertion/withdrawal cycles mechanical	50
Contact connection method	Solder-in connection
Type of contacts	Socket
Application	Signal
Number of positions	19
Contact diameter of power contacts	1.5 mm
Litz wire cross section of power contacts min.	0.6 mm <sup>2</sup>
Litz wire cross section of power contacts max.	0.6 mm <sup>2</sup>
Nominal voltage, power contact	150 V
Rated surge voltage	1.5 kV
Overvoltage category	II
Degree of pollution	3
Contact diameter of signal contacts	1 mm
Litz wire cross section of signal contacts min.	0.6 mm <sup>2</sup>

# Device connector, rear mounting - RC-1LS1NP24200 - 1621702

## Technical data

### Data of the insulating body

Litz wire cross section of signal contacts max.	0.6 mm <sup>2</sup>
Nominal current per signal contact at 25°C	8 A
Nominal voltage, signal contact	150 V
Overvoltage category	II
Degree of pollution	3
Nominal voltage of data contact	150 V
Rated surge voltage	1.5 kV

### Housing data

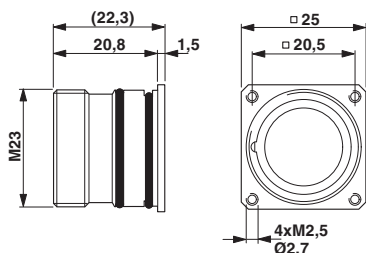
Housing material	Metal
Type of locking	Screw locking
Degree of protection (when plugged in)	IP67
Thread type	M23

### Environmental Product Compliance

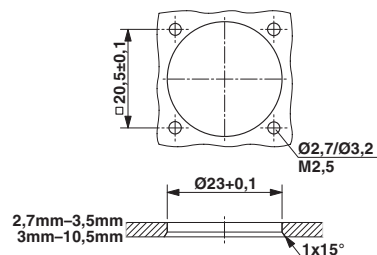
REACH SVHC	Lead 7439-92-1
China RoHS	Environmentally Friendly Use Period = 50
	For details about hazardous substances go to tab "Downloads", Category "Manufacturer's declaration"

## Drawings

Dimensional drawing



Dimensional drawing



## Classifications

eCl@ss

eCl@ss 4.0	272607xx
eCl@ss 4.1	27260701
eCl@ss 5.0	27260701
eCl@ss 5.1	27260700
eCl@ss 6.0	27279200
eCl@ss 7.0	27440103
eCl@ss 8.0	27440103
eCl@ss 9.0	27440102

# Device connector, rear mounting - RC-1LS1NP24200 - 1621702

## Classifications

### ETIM

ETIM 3.0	EC001121
ETIM 4.0	EC001121
ETIM 5.0	EC002641
ETIM 6.0	EC002641

### UNSPSC

UNSPSC 6.01	43172015
UNSPSC 7.0901	43201404
UNSPSC 11	43172015
UNSPSC 12.01	43201404
UNSPSC 13.2	39121413

## Approvals

### Approvals

---

### Approvals


### EAC

---

### Ex Approvals

---

## Approval details

EAC		B.01742
-----	---	---------

---