

## Sensor/actuator cable - SAC-3P- 1,5-PVC/B-1L-Z - 1415922

Please be informed that the data shown in this PDF Document is generated from our Online Catalog. Please find the complete data in the user's documentation. Our General Terms of Use for Downloads are valid (<http://phoenixcontact.com/download>)



Sensor/actuator cable, 3-position, PVC, black RAL 9005, free cable end, on Valve connector B (10 mm), with 1 LED, connected with Z diode, cable length: 1.5 m

### Your advantages

- ✓ Easy and safe: 100% electrically tested plug-in components
- ✓ Robust valve connector with Zener diode as protective circuit
- ✓ Convenient: increased machine availability thanks to quick and easy diagnostics

RoHS

### Key Commercial Data

|                                      |   |
|--------------------------------------|---|
| Packing unit                         | 1 pc  |
| GTIN                                 | <br>4 055626 054872 |
| GTIN                                 | 4055626054872   |
| Weight per Piece (excluding packing) | 79.800 g  |
| Custom tariff number                 | 85444290  |
| Country of origin                    | Poland  |

### Technical data

#### Dimensions

|                               |         |
|-------------------------------|---------|
| Length of cable               | 1.5 m   |
| Central screw valve connector | M3 x 29 |

#### Ambient conditions

|                                 |                               |
|---------------------------------|-------------------------------|
| Ambient temperature (operation) | -20 °C ... 85 °C (valve plug) |
| Degree of protection            | IP65                          |
|                                 | IP67                          |

#### General

|                       |         |
|-----------------------|---------|
| Rated current at 40°C | 4 A     |
| Rated voltage         | 24 V AC |

# Sensor/actuator cable - SAC-3P- 1,5-PVC/B-1L-Z - 1415922

## Technical data

### General

|                              |                                    |
|------------------------------|------------------------------------|
|                              | 24 V DC                            |
| Number of positions          | 3                                  |
| Color handle area            | black                              |
| Insulation resistance        | ≥ 100 MΩ                           |
| Standards/regulations        | Valve connector EN 175301-803      |
| Status display               | 1 LED                              |
| Protective circuit/component | Z diode                            |
| Pulse power $W_{max}$        | 40 W (at 100 μs square-wave pulse) |
| Reverse voltage              | 50 V                               |
| Overvoltage category         | III                                |
| Degree of pollution          | 3                                  |

### Material

|  |                   |
|--|-------------------|
| Flammability rating according to UL 94 | V0                |
| Valve plug contact material            | CuSn              |
| Valve plug contact surface material    | Sn                |
| Valve plug contact insert material     | PA 6.6            |
| Material housing valve plug            | TPU               |
| Sealing material                       | TPU (Seal molded) |

### Standards and Regulations

|  |                 |
|--|-----------------|
| Standard designation                   | Valve connector |
| Standards/regulations                  | EN 175301-803   |
| Flammability rating according to UL 94 | V0              |

### Cable

|  |                                |
|--|--------------------------------|
| Cable type                                 | PVC black                      |
| Cable type (abbreviation)                  | PVC                            |
| Cable abbreviation                         | LiYY                           |
| UL AWM style                               | 2464                           |
| Conductor cross section                    | 3x 0.5 mm <sup>2</sup>         |
| AWG signal line                            | 20                             |
| Conductor structure signal line            | 16x 0.20 mm                    |
| Core diameter including insulation         | 1.5 mm ±0.05 mm                |
| Wire colors                                | black 1, black 2, green/yellow |
| Overall twist                              | 3 wires, twisted               |
| External sheath, color                     | black RAL 9005                 |
| External cable diameter D                  | 4.8 mm ±0.2 mm                 |
| Minimum bending radius, fixed installation | 5 x D                          |
| Outer sheath, material                     | PVC                            |
| Material conductor insulation              | PVC                            |
| Conductor material                         | Bare Cu litz wires             |

# Sensor/actuator cable - SAC-3P- 1,5-PVC/B-1L-Z - 1415922

## Technical data

### Cable

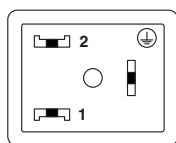
|                                 |  |
|---------------------------------|--|
| Insulation resistance           | ≥ 20 MΩ*km                                     |
| Conductor resistance            | 39 Ω/km (at 20 °C)                             |
| Nominal voltage, cable          | 300 V  |
| Test voltage, cable             | 1200 V   |
| Flame resistance                | DIN VDE 0482                                   |
|                                 | DIN EN 50265-2-1                               |
| Resistance to oil               | largely oil-resistant                          |
| Ambient temperature (operation) | -40 °C ... 80 °C (cable, fixed installation)   |
|                                 | -5 °C ... 80 °C (cable, flexible installation) |

### Environmental Product Compliance

|            |   |
|------------|---|
| China RoHS | Environmentally Friendly Use Period = 50  |
|            | For details about hazardous substances go to tab "Downloads", Category "Manufacturer's declaration" |

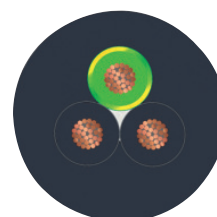
## Drawings

Schematic diagram



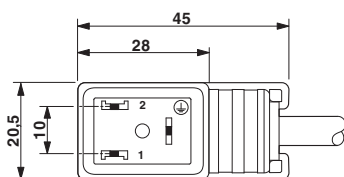
Valve connector pin assignment, type B

Cable cross section



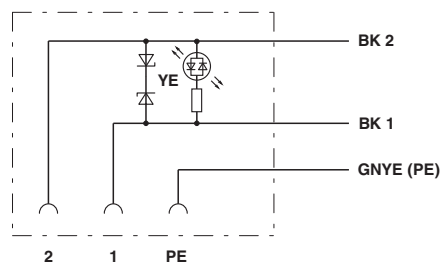
PVC black [PVC]

Dimensional drawing



Valve connector, type B

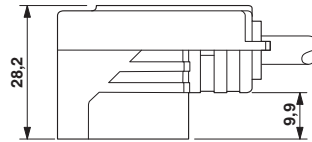
Circuit diagram



Contact assignment of the valve plug

# Sensor/actuator cable - SAC-3P- 1,5-PVC/B-1L-Z - 1415922

Dimensional drawing



Valve connector, type B, side view

## Classifications

eCl@ss

|            |          |
|------------|----------|
| eCl@ss 5.1 | 27061800 |
| eCl@ss 6.0 | 27279200 |
| eCl@ss 7.0 | 27279218 |
| eCl@ss 8.0 | 27279218 |
| eCl@ss 9.0 | 27060312 |

ETIM

|          |          |
|----------|----------|
| ETIM 5.0 | EC001855 |
| ETIM 6.0 | EC001855 |

UNSPSC

|             |          |
|-------------|----------|
| UNSPSC 13.2 | 31251501 |
|-------------|----------|

## Approvals

Approvals

Approvals

CSAus

Ex Approvals

## Approval details

|                    |      |   |       |
|--------------------|------|---|-------|
| CSAus              |      | <a href="http://www.csagroup.org/services-industries/product-listing/">http://www.csagroup.org/services-industries/product-listing/</a> | 13631 |
| Nominal voltage UN | 24 V |   |       |
| Nominal current IN | 6 A  |   |       |

## Sensor/actuator cable - SAC-3P- 1,5-PVC/B-1L-Z - 1415922

### Accessories

#### Accessories

#### Conductor marking

Insert label - PABA WH/23 - 1013779



Insert label, Strip, white, unlabeled, can be labeled with: CMS-P1-PLOTTER, mounting type: thread on, cable diameter range: 1.5 - 35 mm, lettering field size: 23 x 4 mm

---

Insert label - PABA YE/23 - 1013782



Insert label, Strip, yellow, unlabeled, can be labeled with: CMS-P1-PLOTTER, mounting type: thread on, cable diameter range: 1.5 - 35 mm, lettering field size: 23 x 4 mm

---

Insert label - PABA WH/15 - 1013151



Insert label, Strip, white, unlabeled, can be labeled with: CMS-P1-PLOTTER, mounting type: thread on, cable diameter range: 0.6 - 50 mm, lettering field size: 15 x 4 mm

---

Insert label - PABA YE/15 - 1013698



Insert label, Strip, yellow, unlabeled, can be labeled with: CMS-P1-PLOTTER, mounting type: thread on, cable diameter range: 0.6 - 50 mm, lettering field size: 15 x 4 mm

---

Insert label - PABA RD/15 - 1013944



Insert label, Strip, red, unlabeled, can be labeled with: CMS-P1-PLOTTER, mounting type: thread on, cable diameter range: 0.6 - 50 mm, lettering field size: 15 x 4 mm

---

#### Corrugated pipe

## Sensor/actuator cable - SAC-3P- 1,5-PVC/B-1L-Z - 1415922

### Accessories

Protective hose - WP-PA HF 13,0 BK - 3240681



Polyamide protective hose, inflammability class V0, UV resistant

---

Protective hose - WP-PA HF-HB 13,0 BK - 3240839



Polyamide protective hose, inflammability class HB, UV resistant

---

### Cutting tools

Diagonal cutter - CUTFOX-S VDE - 1212207



Diagonal cutter for hard (piano wire) and soft wires, VDE 1000 V AC/1500 V DC tested

---

### Marker carrier cable

Conductor marker carrier - PATG 2/15 - 1013038



Conductor marker carrier, transparent, unlabeled, mounting type: slide on, cable diameter range: 2 - 4 mm, lettering field size: 15 x 4 mm

---

Conductor marker carrier - PATG 3/15 - 1013041



Conductor marker carrier, transparent, unlabeled, mounting type: slide on, cable diameter range: 4 - 7 mm, lettering field size: 15 x 4 mm

---

## Sensor/actuator cable - SAC-3P- 1,5-PVC/B-1L-Z - 1415922

### Accessories

Conductor marker carrier - PATG 4/15 - 1013054



Conductor marker carrier, transparent, unlabeled, mounting type: slide on, cable diameter range: 6 - 10 mm, lettering field size: 15 x 4 mm

---

### Marker pen

Marker pen - B-STIFT - 1051993



Marker pen, for manual labeling of unprinted Zack strips, smear-proof and waterproof, line thickness 0.5 mm

---

### Mounting material

Screw - SAC-V-SCREW-M3-29 KNUURL - 1403779



Fillister head screw with plastic knurl, M3 x 40

---

### Screwdriver tools

Screw insert - SF-BIT-PH 1-70 - 1212582



Screw bit, PH crosshead, E6.3-1/4" drive, size: PH 1 x 70 mm, hardened, suitable for holder according to DIN 3126-F6.3/ISO 1173

---

### Stripping tool

Stripping tool - WIREFOX SAC-1 - 1212757



Stripping pliers, for halogen-free sensor/actuator cables (SAC cables), with PUR and PVC insulation, from  $\varnothing$  of 3.2 to 4.4 mm, any stripping length

## Sensor/actuator cable - SAC-3P- 1,5-PVC/B-1L-Z - 1415922

### Accessories

Stripping tool - WIREFOX SAC - 1212623



Stripping pliers, for halogen-free sensor/actuator cables (SAC cables), with PUR and PVC insulation, from  $\varnothing$  of 4.4 to 7 mm, any stripping length

---

Stripping tool - WIREFOX 10 - 1212150



Stripping tool, for cables and conductors from 0.02 - 10 mm<sup>2</sup>, self-adjusting, stripping length of up to 18 mm, cutting capacity of up to 10 mm<sup>2</sup> stranded/1.5 mm<sup>2</sup> solid, replaceable stripping blade

---

### Torque tool

Torque screwdriver - TSD-M 1,2NM - 1212224



Torque screw driver, accuracy as per EN ISO 6789 standard, adjustable from 0.3 - 1.2 Nm

---

Protective hose adapter - WP-CTA POM 13,0 BK - 1422884



Protective hose adapter, for corrugated hoses with a nominal size of 13 (10 x 13), corrugated in parallel

---