

# Housing screw connection - SACC-FP-M-M12/PRESS SMD - 1412080

Please be informed that the data shown in this PDF Document is generated from our Online Catalog. Please find the complete data in the user's documentation. Our General Terms of Use for Downloads are valid (<http://phoenixcontact.com/download>)



Housing screw connection, pin, for the two-part M12 SMD connector, for press-in mounting.

## Your advantages

- ✓ Reduced mounting costs thanks to two-piece device connector
- ✓ Easy device integration, thanks to mechanical port screw connections with press-in contour
- ✓ Efficient PCB assembly: two-piece connectors for SMT soldering

RoHS

## Key Commercial Data

Packing unit	10 pc
Minimum order quantity	10 pc
GTIN	
GTIN	4046356992985
Weight per Piece (excluding packing)	7.740 g
Custom tariff number	74153300
Country of origin	Germany

## Technical data

### Ambient conditions

Ambient temperature (operation)	-25 °C ... 85 °C (Plug / socket)
	-40 °C ... 85 °C (without mechanical actuation)
Degree of protection	IP67 (correctly plugged in and locked)

### General

Note	The electrical and mechanical data specified assume that the connector pair is correctly locked and mounted. If the connector is unlocked and if there is a danger of contamination, the connector must be sealed using a protective cap > IP54. Influences arising from litz wires, cables or PCB assembly must also be taken into consideration.
Standards/regulations	M12 connector IEC 61076-2-101 In line with

# Housing screw connection - SACC-FP-M-M12/PRESS SMD - 1412080

## Technical data

### General

Insertion/withdrawal cycles	> 100
Mounting type	Front mounting Press-in mounting

### Material

Material, knurts	Nickel-plated brass
Material	Brass, nickel-plated

### Cable

Standards/specifications	M12 connector IEC 61076-2-101 In line with
--------------------------	--

### Standards and Regulations

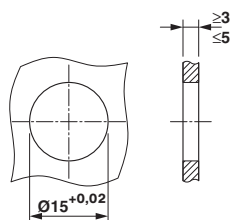
Standard designation	M12 connector
Standards/regulations	IEC 61076-2-101

### Environmental Product Compliance

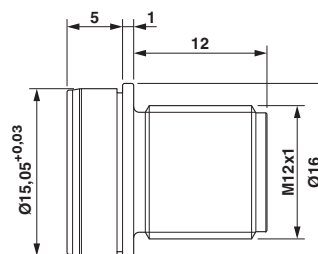
REACH SVHC	Lead 7439-92-1
China RoHS	Environmentally Friendly Use Period = 50
	For details about hazardous substances go to tab "Downloads", Category "Manufacturer's declaration"

## Drawings

Dimensional drawing



Dimensional drawing



Housing bore holes

## Classifications

### eCl@ss

eCl@ss 5.1	27379100
eCl@ss 6.0	27379200
eCl@ss 7.0	27379201
eCl@ss 8.0	27379201
eCl@ss 9.0	27379201

### ETIM

ETIM 5.0	EC002498
ETIM 6.0	EC002498

# Housing screw connection - SACC-FP-M-M12/PRESS SMD - 1412080

## Classifications

### UNSPSC

UNSPSC 13.2	39121421
-------------	----------

## Approvals

### Approvals

---

### Approvals

EAC

---

### Ex Approvals

---

## Approval details

EAC		B.01742
-----	---	---------

---