

Printed-circuit board connector - MC 1,5/ 3-G-3,81 P26 THRR32 - 1782475

Please be informed that the data shown in this PDF Document is generated from our Online Catalog. Please find the complete data in the user's documentation. Our General Terms of Use for Downloads are valid (<http://phoenixcontact.com/download>)

Header, Nominal current: 8 A, Rated voltage (III/2): 160 V, Number of positions: 3, Pitch: 3.81 mm, Color: black, Contact surface: Tin, Mounting: THR soldering



The figure shows a 10-position version of the product

Why buy this product

- Low-profile THR headers with a compact pitch
- Pitch: 3.81 mm
- Plug-in direction parallel to the PCB
- Delivery form: tape-on-reel packing according to IEC 60286-3 for automated mounting
- Use in SMT reflow processes



Key Commercial Data

| | |
|--------------------------------------|----------|
| Packing unit | 1 STK |
| Minimum order quantity | 470 STK |
| Weight per Piece (excluding packing) | 1.702 g |
| Custom tariff number | 85366990 |
| Country of origin | Germany |

Technical data

Environmental Product Compliance

| | |
|------------|--|
| China RoHS | No hazardous substances above threshold values |
|------------|--|

Dimensions

| | |
|-----------------------|---------|
| Length | 9.2 mm |
| Pitch | 3.81 mm |
| Dimension a | 7.62 mm |
| Constructional height | 6.9 mm |

Printed-circuit board connector - MC 1,5/ 3-G-3,81 P26 THRR32 - 1782475

Technical data

Dimensions

| | |
|--------------------------|--------------|
| Height | 9.5 mm |
| Length of the solder pin | 2.6 mm |
| Pin dimensions | 0,8 x 0,8 mm |
| Hole diameter | 1.4 mm |

General

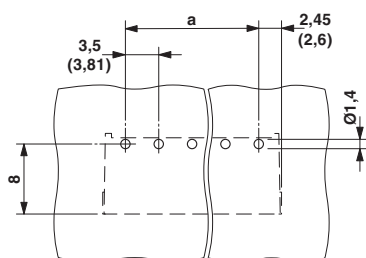
| | |
|--|-----------------|
| Range of articles | MC 1,5/...G-THR |
| Insulating material group | IIIa |
| Rated surge voltage (III/3) | 2.5 kV |
| Rated surge voltage (III/2) | 2.5 kV |
| Rated surge voltage (II/2) | 2.5 kV |
| Rated voltage (III/3) | 160 V |
| Rated voltage (III/2) | 160 V |
| Rated voltage (II/2) | 250 V |
| Connection in acc. with standard | EN-VDE |
| Nominal current I_N | 8 A |
| Insulating material | LCP |
| Flammability rating according to UL 94 | V0 |
| Color | black |
| Number of positions | 3 |

Standards and Regulations

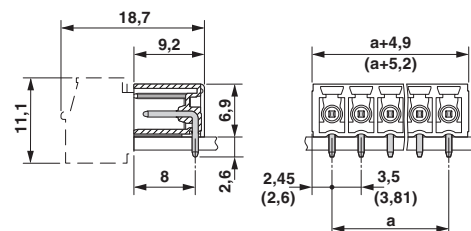
| | |
|--|--------|
| Connection in acc. with standard | EN-VDE |
| | CUL |
| Flammability rating according to UL 94 | V0 |

Drawings

Drilling diagram



Dimensional drawing



Printed-circuit board connector - MC 1,5/ 3-G-3,81 P26 THRR32 - 1782475

Classifications

eCl@ss

| | |
|------------|----------|
| eCl@ss 4.0 | 272607xx |
| eCl@ss 4.1 | 27260701 |
| eCl@ss 5.0 | 27260701 |
| eCl@ss 5.1 | 27260701 |
| eCl@ss 6.0 | 27260704 |
| eCl@ss 7.0 | 27440402 |
| eCl@ss 8.0 | 27440402 |
| eCl@ss 9.0 | 27440402 |

ETIM

| | |
|----------|----------|
| ETIM 4.0 | EC002637 |
| ETIM 5.0 | EC002637 |

UNSPSC

| | |
|---------------|----------|
| UNSPSC 6.01 | 30211810 |
| UNSPSC 7.0901 | 39121409 |
| UNSPSC 11 | 39121409 |
| UNSPSC 12.01 | 39121409 |
| UNSPSC 13.2 | 39121409 |

Approvals


Approvals

Approvals

VDE Gutachten mit Fertigungsüberwachung / EAC / cULus Recognized / IECEE CB Scheme / EAC

Ex Approvals

Approval details

| | |
|--|-------|
| VDE Gutachten mit Fertigungsüberwachung  http://www.vde.de 40011723 | |
| Nominal current IN | 8 A |
| Nominal voltage UN | 160 V |


Printed-circuit board connector - MC 1,5/ 3-G-3,81 P26 THRR32 - 1782475

Approvals

EAC EAC-Zulassung

cULus Recognized <http://database.ul.com/cgi-bin/XYV/template/LISEXT/1FRAME/index.htm> E60425-20110128

| | B | D |
|--------------------|-------|-------|
| Nominal current IN | 8 A | 8 A |
| Nominal voltage UN | 300 V | 300 V |

IECEE CB Scheme  <http://www.iecee.org/> DE1-56063-B1B2

| Nominal current IN | 8 A |
|--------------------|-------|
| Nominal voltage UN | 160 V |

EAC B.01742