

Panel mounting frames - VS-PPC-F2-MSTB-MNNA-1R-P - 1608087


Please be informed that the data shown in this PDF Document is generated from our Online Catalog. Please find the complete data in the user's documentation. Our General Terms of Use for Downloads are valid (<http://phoenixcontact.com/download>)



MSTB panel mounting frame, IP67, for push-pull interlocking, metal, for PCB connection, for square panel cutout, with grommet, without mounting screws



Key Commercial Data

Packing unit	1 pc
GTIN	 4 046356 131759
Weight per Piece (excluding packing)	23.7 g
Custom tariff number	85389099
Country of origin	Germany

Technical data

General data

Note	This product corresponds to the PROFINET Cabling and Interconnection Technology Guideline for PROFINET regulations, version 2.00, order no: 2.252, Chapter 11 Connectors for 24 Volt Power Supply Cabling and Chapter 13 Application specific Cabling and Interconnection Technology (AIDA)
Degree of pollution	2

Standards and Regulations

Flammability rating according to UL 94	V0
--	----

Classifications

eCl@ss

eCl@ss 4.0	272607xx
eCl@ss 4.1	27260701
eCl@ss 5.0	27260701
eCl@ss 5.1	27260701
eCl@ss 6.0	27260708

Panel mounting frames - VS-PPC-F2-MSTB-MNNA-1R-P - 1608087

Classifications

eCl@ss

eCl@ss 7.0	27440312
eCl@ss 8.0	27440210

ETIM

ETIM 3.0	EC001121
ETIM 4.0	EC001121
ETIM 5.0	EC002310

UNSPSC

UNSPSC 6.01	31261501
UNSPSC 7.0901	31261501
UNSPSC 11	31261501
UNSPSC 12.01	31261501
UNSPSC 13.2	31261501

Accessories

Accessories

Contact insert

Female insert - VS-MSTBVA 2,5/ 5-GB-5,08-BK-A - 1609565



MSTB contact insert, for PCB assembly, 24 V, 5-pos., with straight solder pins, RAL 9005 (black), for panel mounting frame VS-PPC-F2-MSTB-...-1R-P

Female insert - VS-MSTBVA 2,5/ 5-GB-5,08-RD-B - 1609581



MSTB contact insert, for PCB assembly, 400 V, 5-pos., with straight solder pins, RAL 3000 (red), for panel mounting frame VS-PPC-F2-MSTB-...-1R-P

Female insert - VS-MSTBAH 2,5/ 5-GB-5,08-BK-A - 1657915



MSTB contact insert, for PCB assembly, 24 V, 5-pos., with angled solder pins, RAL 9005 (black), for panel mounting frame VS-PPC-F2-MSTB-...-1R-P

Panel mounting frames - VS-PPC-F2-MSTB-MNNA-1R-P - 1608087

Accessories

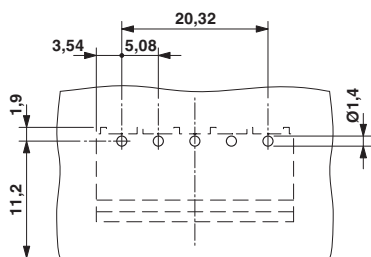
Female insert - VS-MSTBAH 2,5/ 5-GB-5,08-RD-B - 1609549



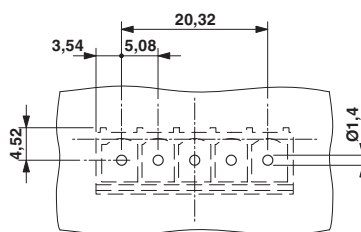
MSTB contact insert, for PCB assembly, 400 V, 5-pos., with angled solder pins, RAL 3000 (red), for panel mounting frame VS-PPC-F2-MSTB-...-1R-P

Drawings

Drilling diagram



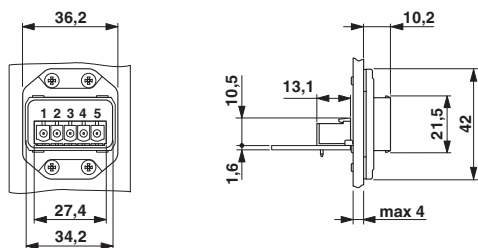
Drilling diagram



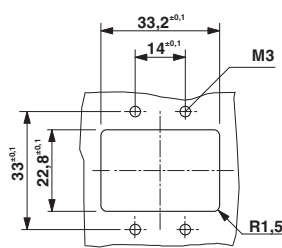
Drilling diagram

Drilling diagram

Dimensional drawing



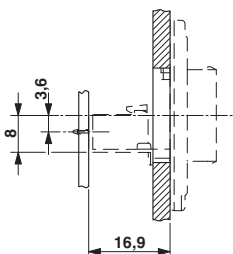
Dimensional drawing



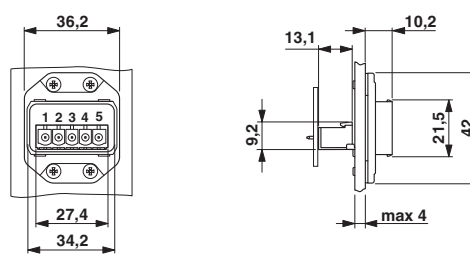
PROFINET POWER panel mounting frame, IP67

Panel cutout

Dimensional drawing



Dimensional drawing

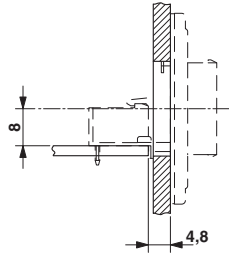


PCB alignment, straight solder pins

PROFINET POWER panel mounting frame, IP67

Panel mounting frames - VS-PPC-F2-MSTB-MNNA-1R-P - 1608087

Dimensional drawing



PCB alignment, angled solder pins

Phoenix Contact 2016 © - all rights reserved
<http://www.phoenixcontact.com>