

Fuse holder - SI-H-FKS 15 - 1728996

Please be informed that the data shown in this PDF Document is generated from our Online Catalog. Please find the complete data in the user's documentation. Our General Terms of Use for Downloads are valid (<http://phoenixcontact.com/download>)



Printed circuit fuse carrier, for 5 mm wide automotive flat-type fuses up to max. 15 A

Product Features

- ✓ Fuse holder for flat-type fuses with a maximum nominal voltage of 32 V
- ✓ With snap-in foot for secure pre-assembly on the PCB



Key commercial data

Packing unit	1 pc
GTIN	4 017918 025878
Weight per Piece (excluding packing)	2.952 GRM
Custom tariff number	85369085
Country of origin	Mexico

Classifications

eCl@ss

eCl@ss 4.0	272607xx
eCl@ss 4.1	27260701
eCl@ss 5.0	27260701
eCl@ss 5.1	27260701
eCl@ss 6.0	27260704
eCl@ss 7.0	27440490
eCl@ss 8.0	27440490

ETIM

ETIM 3.0	EC002298
ETIM 4.0	EC002498

Fuse holder - SI-H-FKS 15 - 1728996

Classifications

ETIM

ETIM 5.0	EC002298
----------	----------

UNSPSC

UNSPSC 6.01	30211810
UNSPSC 7.0901	39121409
UNSPSC 11	39121409
UNSPSC 12.01	39121409
UNSPSC 13.2	39121409

Approvals

Approvals


Approvals


CSA / UL Recognized / GOST / UL Recognized / GOST


Ex Approvals

Approvals submitted

Approval details


CSA 


UL Recognized 		
	B	C
Nominal current I _N	15 A	15 A
Nominal voltage U _N	32 V	300 V

GOST 
--

Fuse holder - SI-H-FKS 15 - 1728996

Approvals

UL Recognized 		
	B	D
Nominal current I _N	12 A	10 A
Nominal voltage U _N	250 V	300 V

GOST 
--

Accessories

Accessories

Fuse

Fuse - SI FORM C 2 A - 0913689



Flat-type plug-in fuse, type C, color code: gray, nominal current: 2 A

Fuse - SI FORM C 4 A DIN 72581 - 0913731



Flat-type plug-in fuse, type C, color code: pink, nominal current: 4 A

Fuse - SI FORM C 5 A DIN 72581 - 0913692



Flat-type plug-in fuse, type C, color code: light brown, nominal current: 5 A

Fuse holder - SI-H-FKS 15 - 1728996

Accessories

Fuse - SI FORM C 7,5 A DIN 72581 - 0913702



Flat-type plug-in fuse, type C, color code: brown, nominal current: 7.5 A

Fuse - SI FORM C 10 A DIN 72581 - 0913715



Flat-type plug-in fuse, type C, color code: red, nominal current: 10 A

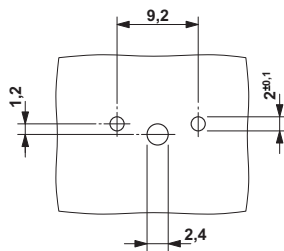
Fuse - SI FORM C 15 A DIN 72581 - 0913676



Flat-type plug-in fuse, type C, color code: light blue, nominal current: 15 A

Drawings

Drilling diagram



Dimensioned drawing

