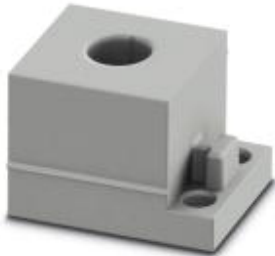


Cable sleeve - CES-STPG-GY-11 - 0801683

Please be informed that the data shown in this PDF Document is generated from our Online Catalog. Please find the complete data in the user's documentation. Our General Terms of Use for Downloads are valid (<http://phoenixcontact.com/download>)



Small, slotted cable sleeves suitable for cables with a diameter of 10 ... 11 mm, material: SEBS

Product description

Slotted sleeves for accommodating pre-assembled cables and lines with a diameter of 10 ... 11 mm, can be used in CES sealing frames. When fitted, the sleeves also ensure strain relief according to DIN EN 50262.



Key commercial data

Packing unit	1 pc
Weight per Piece (excluding packing)	6.0 GRM
Custom tariff number	85472000
Country of origin	Poland

Technical data

Dimensions

External cable diameter	1x 10 mm ... 11 mm
Length	29.5 mm
Width	19.5 mm
Height	17 mm

Ambient conditions

Degree of protection	IP54
	IP55 (when using a CES-B...-SFFS-PLBK sealing frame with screw locking)
Ambient temperature (operation)	-40 °C ... 80 °C (static)

General

Product description	Slotted sleeves for accommodating pre-assembled cables and lines with a diameter of 10 ... 11 mm, can be used in CES sealing frames. When fitted, the sleeves also ensure strain relief according to DIN EN 50262.
---------------------	--

Cable sleeve - CES-STPG-GY-11 - 0801683

Technical data

General

Material	SEBS
Inflammability class according to UL 94	V0
Color	gray

Classifications

eCl@ss

eCl@ss 4.0	27081002
eCl@ss 4.1	27081002
eCl@ss 5.0	27081002
eCl@ss 5.1	27081002
eCl@ss 6.0	27081002
eCl@ss 7.0	27081002
eCl@ss 8.0	27081002

ETIM

ETIM 3.0	EC000879
ETIM 4.0	EC000451
ETIM 5.0	EC000451

UNSPSC

UNSPSC 6.01	30212109
UNSPSC 7.0901	39121708
UNSPSC 11	39121708
UNSPSC 12.01	39121708
UNSPSC 13.2	39121708

Approvals

Approvals

Approvals

UL Recognized / cUL Recognized / cULus Recognized

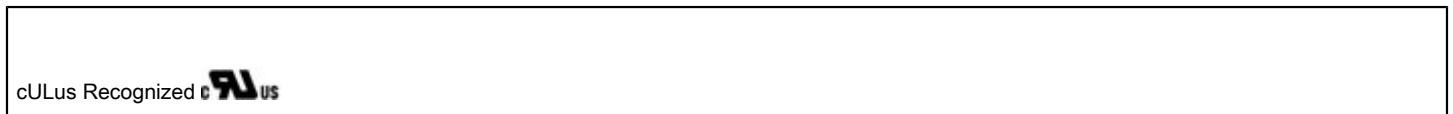
Ex Approvals

Cable sleeve - CES-STPG-GY-11 - 0801683

Approvals

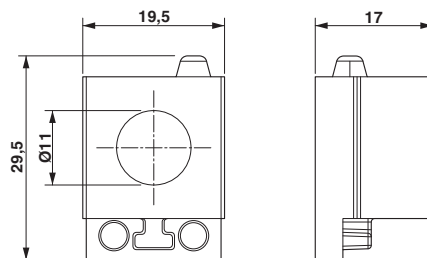
Approvals submitted

Approval details



Drawings

Dimensioned drawing



Dimensional drawing