

## Socket - EM-DUO/120/15/GFI - 5600462

Please be informed that the data shown in this PDF Document is generated from our Online Catalog. Please find the complete data in the user's documentation. Our General Terms of Use for Downloads are valid (<http://phoenixcontact.com/download>)



Rail-mounted dual socket with integrated fault current circuit breaker for mounting on 35 mm DIN rail per EN 60715. Housing color: ivory. National version: USA. Connection type: screw.

Figure shows the variant 5600461  
EM-DUO 120/15



### Key commercial data

Packing unit	1 pc
Weight per Piece (excluding packing)	301.2 GRM
Custom tariff number	85366990
Country of origin	China

### Technical data

#### Dimensions

Width	83 mm
Height	134 mm
Depth	52 mm

#### Ambient conditions

Ambient temperature (operation)	-20 °C ... 50 °C
---------------------------------	------------------

#### General

Nominal voltage $U_N$	125 V AC
Nominal current $I_N$	15 A
For country-specific use in	USA
	Canada
	China

## Socket - EM-DUO/120/15/GFI - 5600462

### Technical data

#### General

	Japan
	Mexico
	Peru
	Saudi Arabia
	Taiwan
	Thailand
	Phillipines
	Venezuela
	Vietnam
Color	ivory
Insulating material	PVC 94 V0
Standards/regulations	UL 508
	CSA 22.2

#### Connection data

Conductor cross section solid min.	0.2 mm <sup>2</sup>
Conductor cross section solid max.	6 mm <sup>2</sup>
Conductor cross section stranded min.	0.2 mm <sup>2</sup>
Conductor cross section stranded max.	4 mm <sup>2</sup>
Conductor cross section AWG/kcmil min.	30
Conductor cross section AWG/kcmil max	10
Connection method	Screw connection
Stripping length	8 mm
Screw thread	M3

### Classifications

#### eCl@ss

eCl@ss 4.0	27142305
eCl@ss 4.1	27142305
eCl@ss 5.0	27143412
eCl@ss 5.1	27143412
eCl@ss 6.0	27143412
eCl@ss 7.0	27440519
eCl@ss 8.0	27440519

#### ETIM

ETIM 2.0	EC001325
----------	----------

# Socket - EM-DUO/120/15/GFI - 5600462

## Classifications

### ETIM

ETIM 3.0	EC001325
ETIM 4.0	EC001663
ETIM 5.0	EC001663

### UNSPSC

UNSPSC 6.01	30211806
UNSPSC 7.0901	39121406
UNSPSC 11	39121406
UNSPSC 12.01	39121406
UNSPSC 13.2	39121406

## Approvals

### Approvals

---

### Approvals

UL Listed / cUL Listed / cUL Listed / cULus Listed / cULus Listed / cULus Listed / null / null / null / null

---


### Ex Approvals

---

### Approvals submitted

---

### Approval details

UL Listed 	
mm <sup>2</sup> /AWG/kcmil	30-10
Nominal current I <sub>N</sub>	15 A
Nominal voltage U <sub>N</sub>	125 V

# Socket - EM-DUO/120/15/GFI - 5600462

## Approvals

cUL Listed	
mm <sup>2</sup> /AWG/kcmil	30-10
Nominal current I <sub>N</sub>	15 A
Nominal voltage U <sub>N</sub>	125 V

cUL Listed	
mm <sup>2</sup> /AWG/kcmil	30-10
Nominal current I <sub>N</sub>	15 A
Nominal voltage U <sub>N</sub>	125 V

cULus Listed	
--------------	--

cULus Listed	
--------------	--

cULus Listed	
--------------	--

--	--

--	--

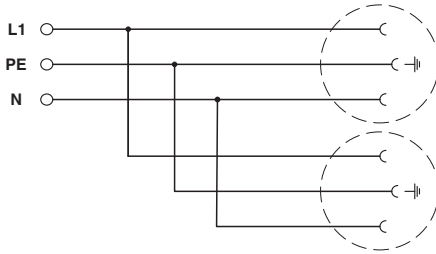
--	--

--	--

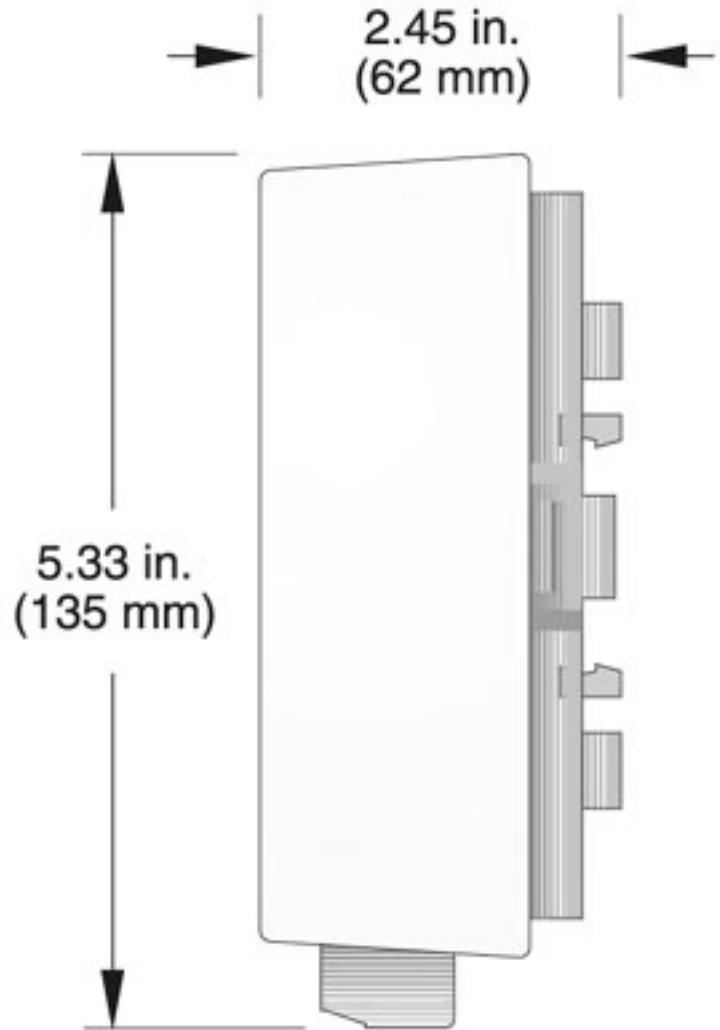
## Drawings

# Socket - EM-DUO/120/15/GFI - 5600462

Circuit diagram



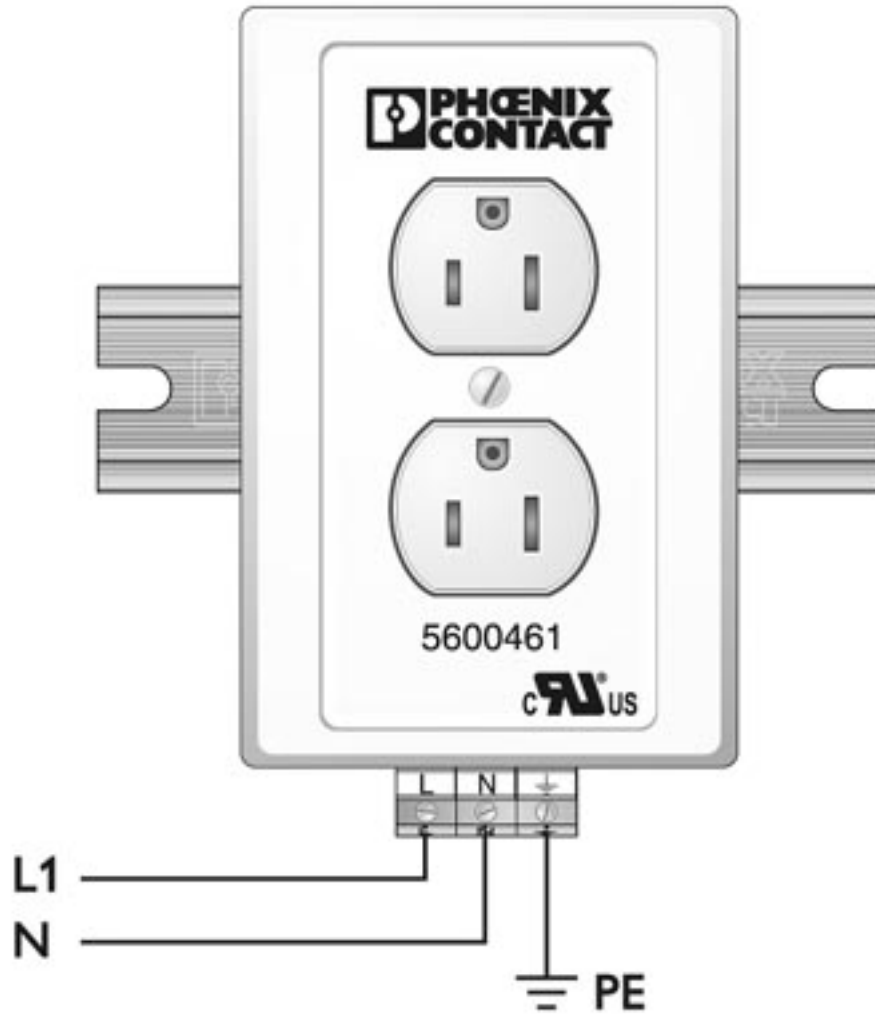
Dimensioned drawing



Side view

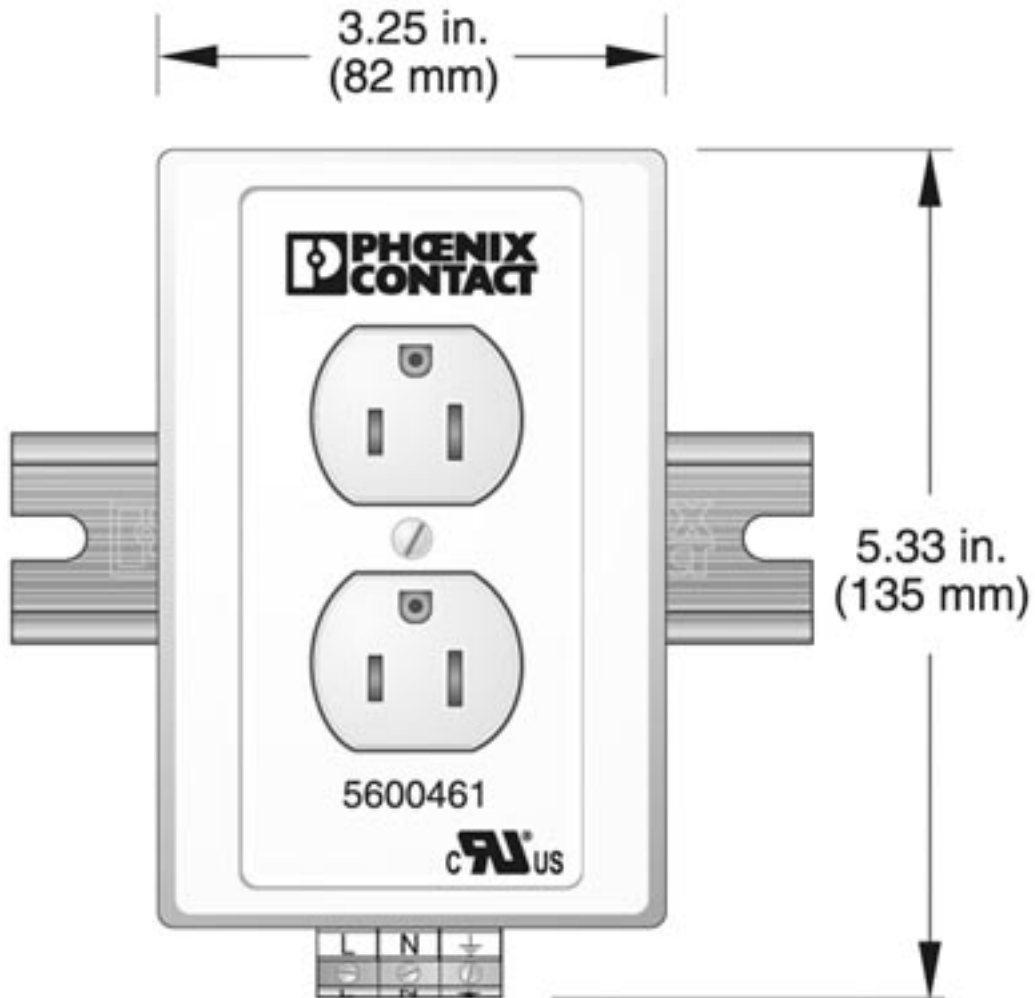
# Socket - EM-DUO/120/15/GFI - 5600462

Connection diagram



# Socket - EM-DUO/120/15/GFI - 5600462

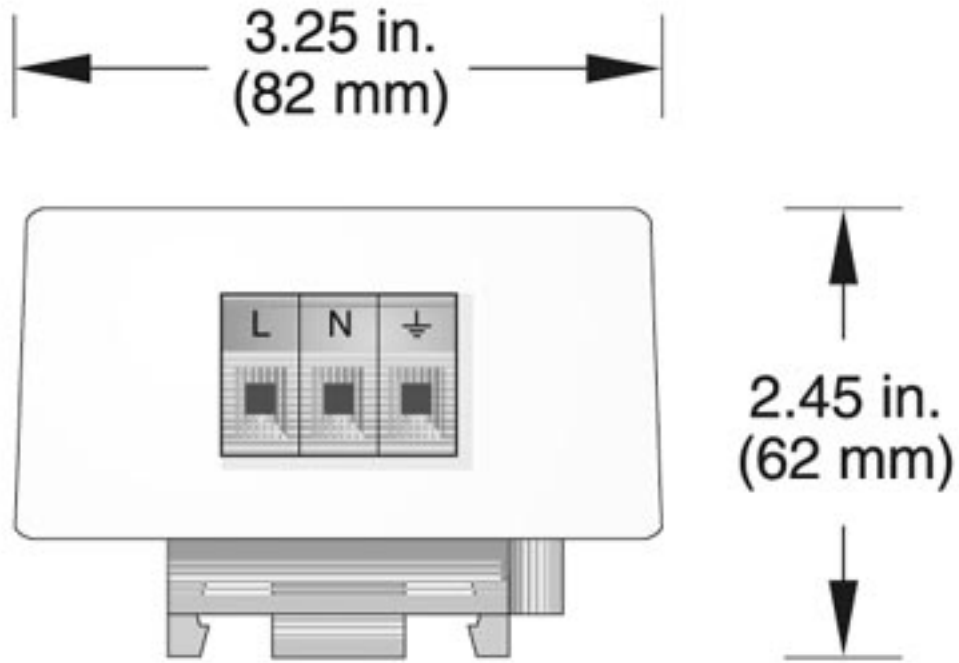
Dimensioned drawing



Front view

## Socket - EM-DUO/120/15/GFI - 5600462

Dimensioned drawing



Bottom view