

Socket - SD-D/SC/LA - 2964898

Please be informed that the data shown in this PDF Document is generated from our Online Catalog. Please find the complete data in the user's documentation. Our General Terms of Use for Downloads are valid (<http://phoenixcontact.com/download>)



Control cabinet socket, for mounting on DIN rails and in the service interface, with screw connection, with light indicator, housing color: green, national version: D



Key commercial data

Packing unit	1 pc
GTIN	 4 017918 190651
Weight per Piece (excluding packing)	79.32 GRM
Custom tariff number	85366990
Country of origin	Greece

Technical data

Dimensions

Width	45 mm
Height	75 mm
Depth	65.2 mm

Ambient conditions

Ambient temperature (operation)	-20 °C ... 60 °C
Ambient temperature (storage/transport)	-20 °C ... 60 °C

General

Nominal voltage U_N	250 V AC
Nominal current I_N	16 A
Status display	Glow lamp or LED with preresistor

Socket - SD-D/SC/LA - 2964898

Technical data

General

Contact material	CuZn37
For country-specific use in	D
Color	green
Insulating material	PA
Standards/regulations	IEC 83
	DIN 49440-1

Connection data

Conductor cross section solid min.	0.2 mm ²
Conductor cross section solid max.	4 mm ²
Conductor cross section stranded min.	0.2 mm ²
Conductor cross section stranded max.	2.5 mm ²
Conductor cross section AWG/kcmil min.	24
Conductor cross section AWG/kcmil max	12
Connection method	Screw connection
Stripping length	8 mm
Screw thread	M3

Classifications

eCl@ss

eCl@ss 4.0	27142305
eCl@ss 4.1	27142305
eCl@ss 5.0	27142305
eCl@ss 5.1	27142305
eCl@ss 6.0	27142305
eCl@ss 7.0	27142305
eCl@ss 8.0	27142305

ETIM

ETIM 2.0	EC001325
ETIM 3.0	EC001325
ETIM 4.0	EC001663
ETIM 5.0	EC001663

UNSPSC

UNSPSC 6.01	30211806
UNSPSC 7.0901	39121406

Socket - SD-D/SC/LA - 2964898

Classifications

UNSPSC

UNSPSC 11	39121406
UNSPSC 12.01	39121406
UNSPSC 13.2	39121406

Approvals

Approvals


Approvals


VDE Zeichengenehmigung / GOST

Ex Approvals

Approvals submitted

Approval details

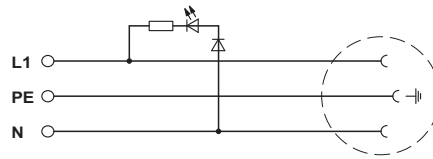
VDE Zeichengenehmigung 	
Nominal current I _N	16 A
Nominal voltage U _N	250 V

GOST 	
--	--

Drawings

Socket - SD-D/SC/LA - 2964898

Circuit diagram



Catalog photo

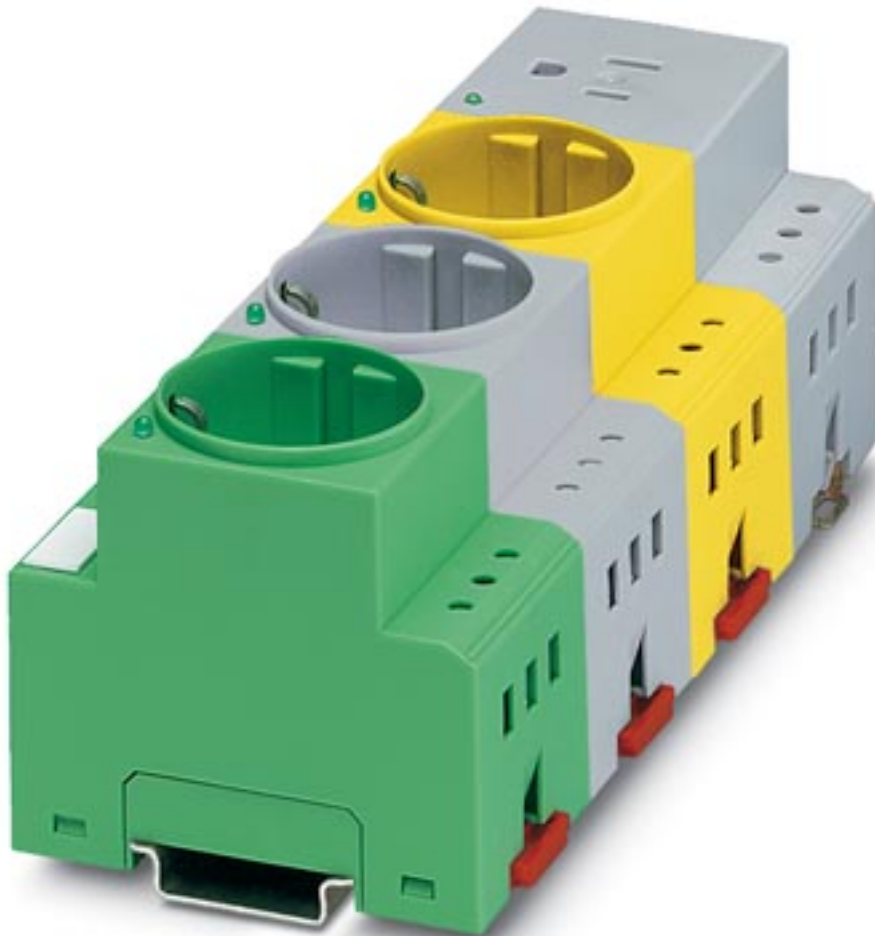


Figure may contain other products.

