

## Panel mounting frames - VS-PPC-F1-SCRJ-MNNA-1RF - 1405374

Please be informed that the data shown in this PDF Document is generated from our Online Catalog. Please find the complete data in the user's documentation. Our General Terms of Use for Downloads are valid (<http://phoenixcontact.com/download>)



SCRJ panel mounting frame, IP67, for push-pull interlocking, metal, with Freenet system, for rectangular mounting cutout, with seal and SCRJ coupling (for POF, PCF, and GOF), without mounting screws



### Key commercial data

Packing unit	1 pc
Weight per Piece (excluding packing)	40.0 GRM
Custom tariff number	85389099
Country of origin	Germany

### Technical data

#### Mechanical characteristics

Number of positions	2
Number of slots	1
Locking type	Push Pull
Fiber	POF, PCF, GOF
Insertion/withdrawal cycles	≥ 500
Color	silver

#### Ambient conditions

Ambient temperature (operation)	-40 °C ... 70 °C
Degree of protection	IP65/IP67

#### Material data

Inflammability class according to UL 94	V0
Housing material	Zinc die-cast

#### Electrical characteristics

Number of positions	2
---------------------	---

# Panel mounting frames - VS-PPC-F1-SCRJ-MNNA-1RF - 1405374

## Technical data

### Electrical characteristics

Pollution degree	2
------------------	---

## Classifications

### eCl@ss

eCl@ss 4.0	272607xx
eCl@ss 4.1	27260701
eCl@ss 5.0	27260701
eCl@ss 5.1	27260701
eCl@ss 6.0	27261207
eCl@ss 7.0	27440210
eCl@ss 8.0	27440210

### ETIM

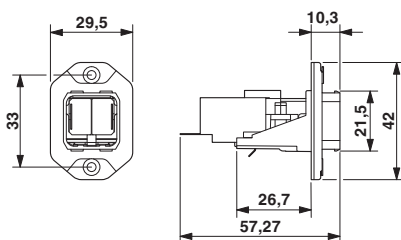
ETIM 3.0	EC002310
ETIM 4.0	EC002310
ETIM 5.0	EC002310

### UNSPSC

UNSPSC 6.01	31261501
UNSPSC 7.0901	31261501
UNSPSC 11	31261501
UNSPSC 12.01	31261501
UNSPSC 13.2	31261501

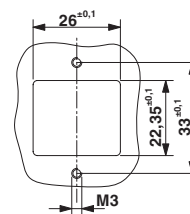
## Drawings

Dimensioned drawing



Push-pull SCRJ panel mounting frame

Dimensioned drawing



Panel cutout

## Panel mounting frames - VS-PPC-F1-SCRJ-MNNA-1RF - 1405374

Explosion drawing

