

Fuse modular terminal block - UK 10,3-HESI 1000V - 3211236

Please be informed that the data shown in this PDF Document is generated from our Online Catalog. Please find the complete data in the user's documentation. Our General Terms of Use for Downloads are valid (<http://phoenixcontact.com/download>)

Fuse terminal block, for cartridge fuse insert 10.3 x 38 mm, cross section: 1.5 - 25 mm², AWG: 16 - 4, width: 18 mm, color: Black

Product Features

- ✓ Terminal blocks for protecting PV lines
- ✓ Dielectric strength up to 1000 V DC



Key commercial data

Packing unit	1 pc
Minimum order quantity	10 pc
Weight per Piece (excluding packing)	52.0 GRM
Custom tariff number	85369085
Country of origin	Germany

Technical data

General

Number of levels	1
Number of connections	2
Color	black
Insulating material	PA
Inflammability class according to UL 94	V0
Fuse	Midget / 10.3 x 38
Rated surge voltage	6 kV
Pollution degree	3
Surge voltage category	III
Insulating material group	IIIa
Connection in acc. with standard	IEC 60269-1/-2
Maximum load current (lower level)	30 A
Additional text	the current and voltage are determined by the fuse
Nominal current I _N (lower level)	30 A (the current and voltage are determined by the fuse)
Nominal voltage U _N	1000 V (the current and voltage are determined by the fuse)
Open side panel	nein

Fuse modular terminal block - UK 10,3-HESI 1000V - 3211236

Technical data

General

Shock protection test specification	DIN EN 50274 (VDE 0660-514):2002-11
Back of the hand protection	guaranteed
Finger protection	guaranteed
Temperature index, insulating material (DIN EN 60216-1 (VDE 0304-21))	120 °C

Dimensions

Width	18 mm
Length	81 mm
Height NS 35/7,5	65.5 mm
Height NS 35/15	73 mm

Connection data

Conductor cross section solid min.	1.5 mm ²
Conductor cross section solid max.	25 mm ²
Conductor cross section stranded min.	0.75 mm ²
Conductor cross section stranded max.	25 mm ²
Conductor cross section AWG/kcmil min.	16
Conductor cross section AWG/kcmil max	3
Conductor cross section stranded, with ferrule without plastic sleeve min.	1.5 mm ²
Conductor cross section stranded, with ferrule without plastic sleeve max.	16 mm ²
Conductor cross section stranded, with ferrule with plastic sleeve min.	1.5 mm ²
Conductor cross section stranded, with ferrule with plastic sleeve max.	16 mm ²
Cross section with insertion bridge, solid max.	10 mm ²
Cross section with insertion bridge, stranded max.	10 mm ²
2 conductors with same cross section, solid min.	1.5 mm ²
2 conductors with same cross section, solid max.	4 mm ²
2 conductors with same cross section, stranded min.	0.75 mm ²
2 conductors with same cross section, stranded max.	10 mm ²
2 conductors with same cross section, stranded, ferrules without plastic sleeve, min.	1.5 mm ²
2 conductors with same cross section, stranded, ferrules without plastic sleeve, max.	4 mm ²
2 conductors with same cross section, stranded, TWIN ferrules with plastic sleeve, min.	1.5 mm ²
2 conductors with same cross section, stranded, TWIN ferrules with plastic sleeve, max.	10 mm ²
Cross section with insertion bridge, solid max.	10 mm ²
Cross section with insertion bridge, stranded max.	10 mm ²
Connection method	Screw connection
Stripping length	11 mm

Fuse modular terminal block - UK 10,3-HESI 1000V - 3211236

Technical data

Connection data

Internal cylindrical gage	A7
Screw thread	M5
Tightening torque, min	2 Nm
Tightening torque max	2.5 Nm

Classifications

eCl@ss

eCl@ss 4.0	27141116
eCl@ss 4.1	27141116
eCl@ss 5.0	27141116
eCl@ss 5.1	27141116
eCl@ss 6.0	27141116
eCl@ss 7.0	27141116
eCl@ss 8.0	27141116

ETIM

ETIM 2.0	EC000897
ETIM 3.0	EC000899
ETIM 4.0	EC000899
ETIM 5.0	EC000899

UNSPSC

UNSPSC 6.01	30211811
UNSPSC 7.0901	39121410
UNSPSC 11	39121410
UNSPSC 12.01	39121410
UNSPSC 13.2	39121410

Approvals

Approvals

Approvals

UL Listed / GOST / GOST


Ex Approvals


Fuse modular terminal block - UK 10,3-HESI 1000V - 3211236

Approvals

Approvals submitted

Approval details

UL Listed 	
mm²/AWG/kcmil	18-8
Nominal current I _N	30 A
Nominal voltage U _N	1000 V

GOST 

GOST 
--

Accessories

Accessories

Bridge

Connection pin - VS-UK 10,3-HESI N 3POL - 3048409



Connection pin, Color: black

End block

Fuse modular terminal block - UK 10,3-HESI 1000V - 3211236

Accessories

End clamp - CLIPFIX 35 - 3022218



Quick mounting end clamp for NS 35/7,5 DIN rail or NS 35/15 DIN rail, with marking option, width: 9.5 mm, color: gray

End clamp - CLIPFIX 35-5 - 3022276



Quick mounting end clamp for NS 35/7,5 DIN rail or NS 35/15 DIN rail, with marking option, with parking option for FBS...5, FBS...6, KSS 5, KSS 6, width: 5.15 mm, color: gray

End clamp - E/NS 35 N - 0800886



End clamp, width: 9.5 mm, color: gray

Fuse

Fuse - FUSE 10,3X38 2A PV - 3061295



Fuse, 10.3x38 mm, up to 1000 V DC, gPV characteristics

Fuse - FUSE 10,3X38 4A PV - 3061305



Fuse, 10.3x38 mm, up to 1000 V DC, gPV characteristics

Fuse modular terminal block - UK 10,3-HESI 1000V - 3211236

Accessories

Fuse - FUSE 10,3X38 6A PV - 3061318



Fuse, 10.3x38 mm, up to 1000 V DC, gPV characteristics

Fuse - FUSE 10,3X38 8A PV - 3061321



Fuse, 10.3x38 mm, up to 1000 V DC, gPV characteristics

Fuse - FUSE 10,3X38 10A PV - 3061334



Fuse, 10.3x38 mm, up to 1000 V DC, gPV characteristics

Fuse - FUSE 10,3X38 12A PV - 3061347



Fuse, 10.3x38 mm, up to 1000 V DC, gPV characteristics

Fuse - FUSE 10,3X38 16A PV - 3061350



Fuse, 10.3x38 mm, up to 1000 V DC, gPV characteristics

Fuse modular terminal block - UK 10,3-HESI 1000V - 3211236

Accessories

Fuse - FUSE 10,3X38 20A PV - 3061363



Fuse, 10.3x38 mm, up to 1000 V DC, gPV characteristics

Insertion bridge

Insertion bridge - EB 56-18 - 3009299



Insertion bridge, Number of positions: 56, Color: gray

Insertion bridge - EB 2-18 - 3009300



Insertion bridge, Number of positions: 2, Color: gray

Insertion bridge - EB 3-18 - 3009305



Insertion bridge, Number of positions: 3, Color: gray

Labeled terminal marker

Zack Marker strip, flat - ZBF 16 CUS - 0827465



Zack Marker strip, flat, can be ordered: Strip, white, labeled according to customer specifications, Mounting type: Snap into flat marker groove, for terminal block width: 16 mm, Lettering field: 5.15 x 16 mm

Fuse modular terminal block - UK 10,3-HESI 1000V - 3211236

Accessories

Marker for terminal blocks - UC-TMF 16 CUS - 0824678



Marker for terminal blocks, can be ordered: by sheet, white, labeled according to customer specifications, Mounting type: Snap into flat marker groove, for terminal block width: 16 mm, Lettering field: 15.45 x 5.1 mm

Marker for terminal blocks - UCT-TMF 16 CUS - 0829693



Marker for terminal blocks, can be ordered: by sheet, white, labeled according to customer specifications, Mounting type: Snap into flat marker groove, for terminal block width: 16 mm, Lettering field: 15.2 x 4.7 mm

Mounting rail

DIN rail perforated - NS 35/ 7,5 PERF 2000MM - 0801733



DIN rail, material: steel galvanized and passivated with a thick layer, perforated, height 7.5 mm, width 35 mm, length: 2000 mm

DIN rail, unperforated - NS 35/ 7,5 UNPERF 2000MM - 0801681



DIN rail, material: Steel, unperforated, height 7.5 mm, width 35 mm, length: 2 m

DIN rail perforated - NS 35/ 7,5 WH PERF 2000MM - 1204119



DIN rail 35 mm (NS 35)

Fuse modular terminal block - UK 10,3-HESI 1000V - 3211236

Accessories

DIN rail - NS 35/ 7,5 WH UNPERF 2000MM - 1204122



DIN rail 35 mm (NS 35)

DIN rail, unperforated - NS 35/ 7,5 AL UNPERF 2000MM - 0801704



DIN rail, unperforated, Width: 35 mm, Height: 7.5 mm, Length: 2000 mm, Color: silver

DIN rail perforated - NS 35/ 7,5 ZN PERF 2000MM - 1206421



DIN rail, material: Galvanized, perforated, height 7.5 mm, width 35 mm, length: 2 m

DIN rail, unperforated - NS 35/ 7,5 ZN UNPERF 2000MM - 1206434



DIN rail, material: Galvanized, unperforated, height 7.5 mm, width 35 mm, length: 2 m

DIN rail, unperforated - NS 35/ 7,5 CU UNPERF 2000MM - 0801762



DIN rail, material: Copper, unperforated, height 7.5 mm, width 35 mm, length: 2 m

Fuse modular terminal block - UK 10,3-HESI 1000V - 3211236

Accessories

End cap - NS 35/ 7,5 CAP - 1206560



DIN rail end piece, for DIN rail NS 35/7.5

DIN rail perforated - NS 35/15 PERF 2000MM - 1201730



DIN rail, material: steel galvanized and passivated with a thick layer, perforated, height 15 mm, width 35 mm, length: 2000 mm

DIN rail, unperforated - NS 35/15 UNPERF 2000MM - 1201714



DIN rail, material: Steel, unperforated, height 15 mm, width 35 mm, length: 2 m

DIN rail perforated - NS 35/15 WH PERF 2000MM - 0806602



DIN rail 35 mm (NS 35)

DIN rail - NS 35/15 WH UNPERF 2000MM - 1204135



DIN rail 35 mm (NS 35)

Fuse modular terminal block - UK 10,3-HESI 1000V - 3211236

Accessories

DIN rail, unperforated - NS 35/15 AL UNPERF 2000MM - 1201756



DIN rail, deep drawn, high profile, unperforated, 1.5 mm thick, material: aluminum, height 15 mm, width 35 mm, length 2000 mm

DIN rail perforated - NS 35/15 ZN PERF 2000MM - 1206599



DIN rail, material: Galvanized, perforated, height 15 mm, width 35 mm, length: 2 m

DIN rail, unperforated - NS 35/15 ZN UNPERF 2000MM - 1206586



DIN rail, material: Galvanized, unperforated, height 15 mm, width 35 mm, length: 2 m

DIN rail, unperforated - NS 35/15 CU UNPERF 2000MM - 1201895



DIN rail, material: Copper, unperforated, 1.5 mm thick, height 15 mm, width 35 mm, length: 2 m

End cap - NS 35/15 CAP - 1206573



DIN rail end piece, for DIN rail NS 35/15

Fuse modular terminal block - UK 10,3-HESI 1000V - 3211236

Accessories

DIN rail, unperforated - NS 35/15-2,3 UNPERF 2000MM - 1201798



DIN rail, material: Steel, unperforated, 2.3 mm thick, height 15 mm, width 35 mm, length: 2 m

Partition plate

Distance bolts - DP-UK 10,3-HESI - 3211238



Distance bolts

Partition plate - TPN-UK - 3003062



Partition plate, Length: 110 mm, Width: 2 mm, Height: 69 mm, Color: gray

Screwdriver tools

Screwdriver - SZS 1,0X4,0 VDE - 1205066



Screwdriver, slot-headed, VDE insulated, size: 1.0 x 4.0 x 100 mm, 2-component grip, with non-slip grip

Terminal marking

Fuse modular terminal block - UK 10,3-HESI 1000V - 3211236

Accessories

Zack Marker strip, flat - ZBF 16:UNPRINTED - 0827464



Zack Marker strip, flat, Strip, white, unlabeled, can be labeled with: Plotter, Mounting type: Snap into flat marker groove, Lettering field: 16.25 x 10.5 mm

Marker for terminal blocks - UC-TMF 16 - 0819262



Marker for terminal blocks, Sheet, white, unlabeled, can be labeled with: BLUEMARK CLED, BLUEMARK LED, Plotter, Mounting type: Snap into flat marker groove, for terminal block width: 16 mm, Lettering field: 15.45 x 5.1 mm

Marker for terminal blocks - UCT-TMF 16 - 0829218

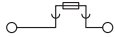


Marker for terminal blocks, Sheet, white, unlabeled, can be labeled with: THERMOMARK CARD, BLUEMARK CLED, BLUEMARK LED, TOPMARK LASER, Mounting type: Snap into flat marker groove, for terminal block width: 16 mm, Lettering field: 15.2 x 4.7 mm

Drawings

Fuse modular terminal block - UK 10,3-HESI 1000V - 3211236

Circuit diagram



Feature photo

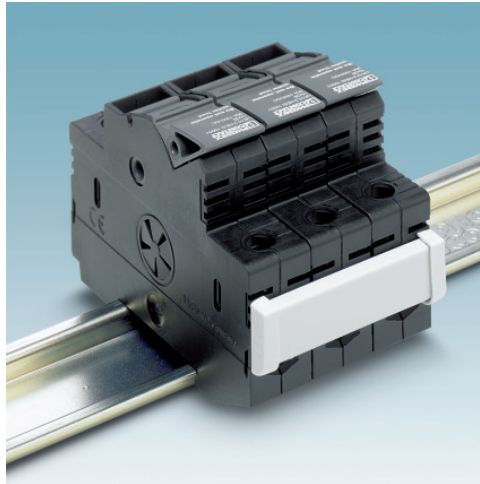


Figure may contain other products.

Feature photo

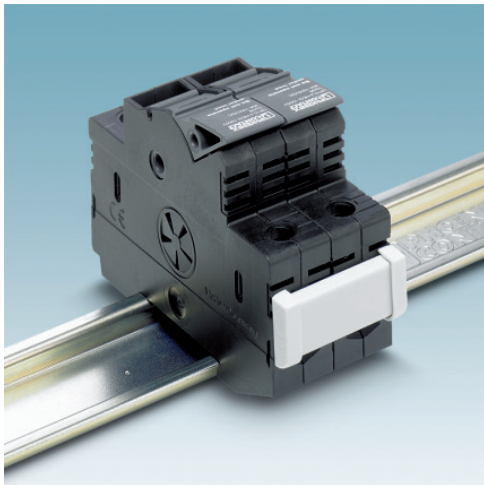


Figure may contain other products.

Feature photo



Figure may contain other products.