

Socket - EMG 90-2SD-D/LA - 2941523

Please be informed that the data shown in this PDF Document is generated from our Online Catalog. Please find the complete data in the user's documentation. Our General Terms of Use for Downloads are valid (<http://phoenixcontact.com/download>)

Rail-mountable double socket, with glow lamp, green housing

The illustration shows the German double socket EMG90-2SD-D/LA



Key commercial data

Packing unit	1 pc
Weight per Piece (excluding packing)	206.3 GRM
Custom tariff number	85366990
Country of origin	Germany

Technical data

Dimensions

Width	90 mm
Height	75 mm
Depth	70.5 mm

Ambient conditions

Ambient temperature (operation)	-20 °C ... 60 °C
Ambient temperature (storage/transport)	-20 °C ... 60 °C

General

Nominal voltage U_N	250 V AC
Nominal current I_N	16 A
Status display	Glow lamp or LED with preresistor
Contact material	CuZn37
For country-specific use in	D
Color	green
Insulating material	PC-F
Standards/regulations	IEC 83
	DIN 49440-1

Connection data

Socket - EMG 90-2SD-D/LA - 2941523

Technical data

Connection data

Conductor cross section solid min.	0.2 mm ²
Conductor cross section solid max.	4 mm ²
Conductor cross section stranded min.	0.2 mm ²
Conductor cross section stranded max.	2.5 mm ²
Conductor cross section AWG/kcmil min.	24
Conductor cross section AWG/kcmil max	12
Connection method	Screw connection
Stripping length	8 mm
Screw thread	M3

Classifications

eCl@ss

eCl@ss 4.0	27142305
eCl@ss 4.1	27142305
eCl@ss 5.0	27142305
eCl@ss 5.1	27142305
eCl@ss 6.0	27142305
eCl@ss 7.0	27142305
eCl@ss 8.0	27142305

ETIM

ETIM 2.0	EC001325
ETIM 3.0	EC001325
ETIM 4.0	EC001663
ETIM 5.0	EC001663

UNSPSC

UNSPSC 6.01	30211806
UNSPSC 7.0901	39121406
UNSPSC 11	39121406
UNSPSC 12.01	39121406
UNSPSC 13.2	39121406

Approvals

Approvals

Socket - EMG 90-2SD-D/LA - 2941523

Approvals

Approvals

GOST

Ex Approvals

Approvals submitted

Approval details



Accessories

Accessories

Marking material - EMG-GKS 12 - 2947035



Equipment marker, width 12 mm

Marking material - EMG-SGKS 10 - 2947585



Equipment marker, narrow

Drawings

Socket - EMG 90-2SD-D/LA - 2941523

Catalog photo

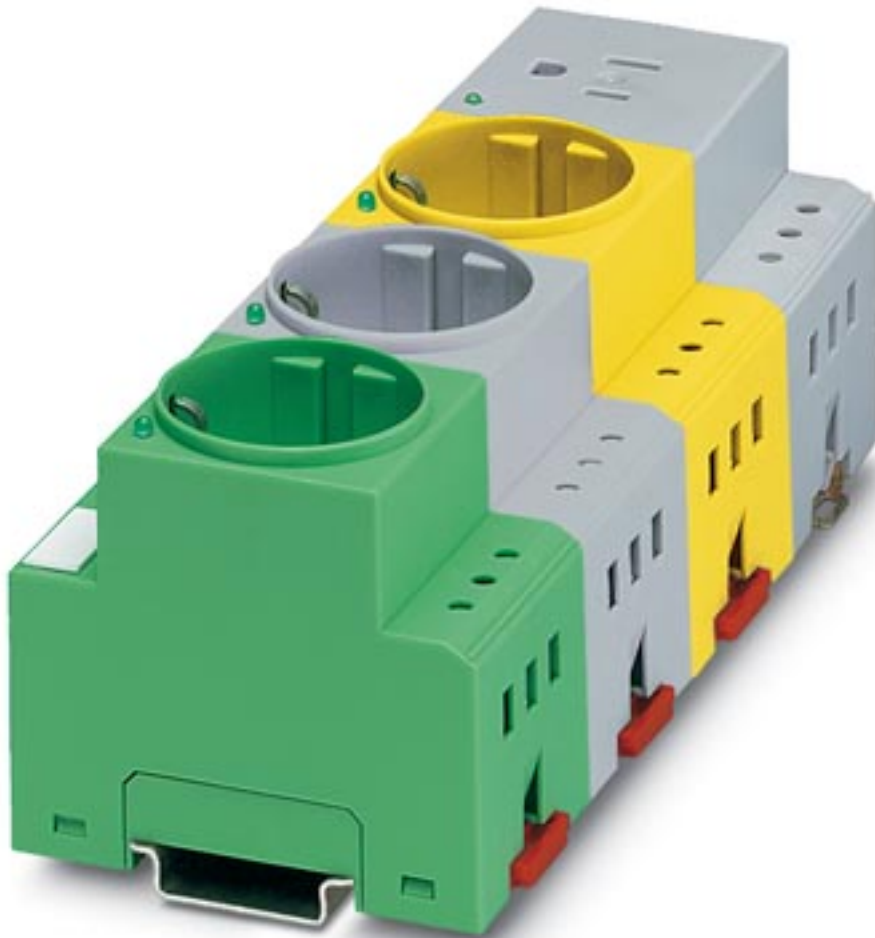


Figure may contain other products.

Socket - EMG 90-2SD-D/LA - 2941523

Circuit diagram

