

product: DELPHI PN 12124513

material: CUZN30

surface: SN

material thickness: 0,45 mm

cross section [mm<sup>2</sup>]: 0,5 | 0,75

strip length: 4,50 mm

cable type: FLY-B

insulation ø [mm]: 1,40 - 1,90

seal:

Uncontrolled  
Copy  
For Information only!

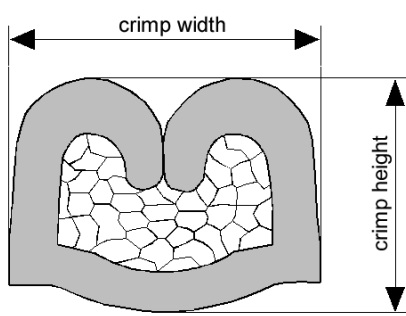
conductor dimension					crimp dimension [mm]					
cable type	cross sect. [mm <sup>2</sup> ]	struct. n x d [mm]	insul. diam. [mm]	tear-out force [N]	core		insulation			
					height ± 0,05	width ± 0,10	height ± 0,10	width ± 0,10	height ± tol.	width ± tol.
FLRY-B	0,5	16 x 0,21	1,50	80	1,60	2,40	2,65	2,80		
FLRY-B	0,75	24 x 0,21	1,80	120	1,70	2,40	2,75	2,80		

core:  
C-2.30-3.5-15  
DPN 10713062

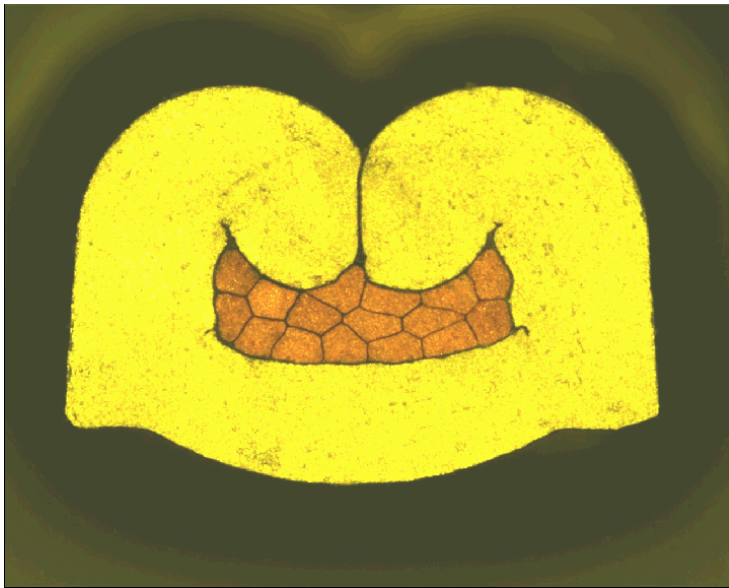
insulation:  
I-2.50-3.5-12  
DPN 10713840

anvil:

two piece anvil:  
AC-2.30-3.75  
DPN 10791635  
AI-2.50-4.8-0.6  
DPN 10805861



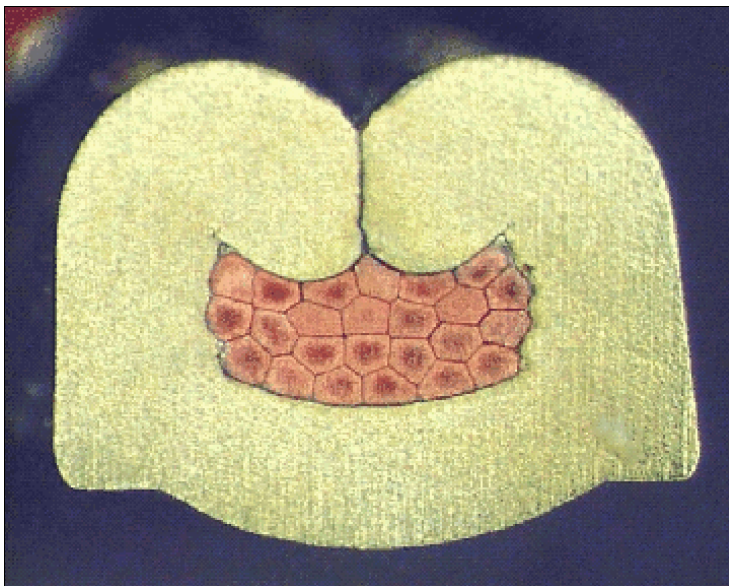
DELPHI PN 12124513



cable:  
 $0,50 \text{ mm}^2 = 16 \times 0,21 \text{ mm}$

crimp height:  
1,60 mm

crimp width:  
2,40 mm



cable:  
 $0,75 \text{ mm}^2 = 24 \times 0,21 \text{ mm}$

crimp height:  
1,70 mm

crimp width:  
2,40 mm