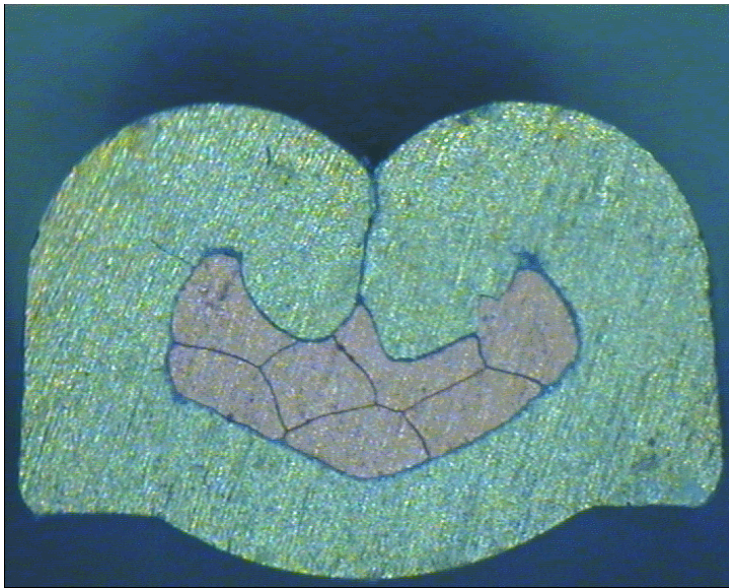




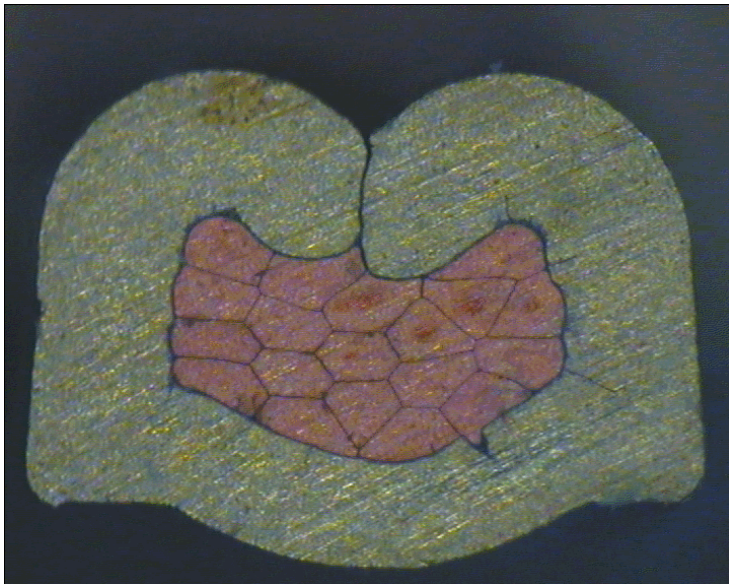
DELPHI PN 12089290



cable:  
 $0,35 \text{ mm}^2 = 7 \times 0,25 \text{ mm}$

crimp height:  
1,00 mm

crimp width:  
1,45 mm



cable:  
 $0,50 \text{ mm}^2 = 19 \times 0,19 \text{ mm}$

crimp height:  
1,10 mm

crimp width:  
1,45 mm