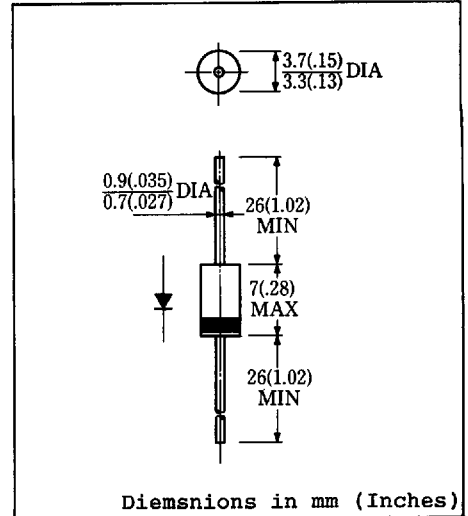


FEATURES

- Miniature Size
- Low Forward Voltage Drop
- Low Reverse Leakage Current
- High Surge Capability
- 52mm Inside Tape Spacing Package Available



Approx. Net Weight : 0.38 Grams

MAXIMUM RATINGS

Voltage Rating	TYPE	20E1	20E2	20E4	20E6	20E8	◆20E10	Unit
	Symbol							
Repetitive Peak Reverse Voltage	V_{RRM}	100	200	400	600	800	1000	v
Non-Repetitive Peak Reverse Voltage	V_{RSM}	250	400	600	800	1000	1200	v
Electrical Rating	Symbol	Condition				Rating		Unit
Average Rectified Output Current	I_o	180° sinusoidal wave conduction P.C. Board mounted * $T_a = 43^\circ\text{C}$				1.7		A
		180° sinusoidal wave conduction Without FIN or PCB $T_a = 33^\circ\text{C}$				1.3		
RMS Forward Current	$I_{F(RMS)}$					2.67		A
Peak One-cycle Forward Surge Current	I_{FSM}	50Hz half sine wave, non-repetitive				80		A
Operating Frequency	f					1,000		Hz
Operating Junction Temperature Range	T_{jw}					-40 to 150		°C
Storage Temperature Range	T_{stg}					-40 to 150		°C

ELECTRICAL & THERMAL CHARACTERISTICS

Characteristics	Symbol	Test Condition	Max.	Unit
Peak Forward Voltage	V_{FM}	$I_{FM} = 1.7A$ $T_j = 25^\circ\text{C}$	0.92	V
Peak Reverse Current	I_{RM}	$V_{RM} = V_{RRM}$ $T_j = 25^\circ\text{C}$	10	μA
Thermal Resistance, junction to ambient	$R_{th(j-a)}$	P.C. Board mounted *	70	°C/W
		Without FIN or P.C. Board	105	

* P.C. Board Print Land = 15 x 15 mm

◆ For spare parts only

6615123 0002315 972

FIG.1-FORWARD VOLTAGE VS. FORWARD CURRENT

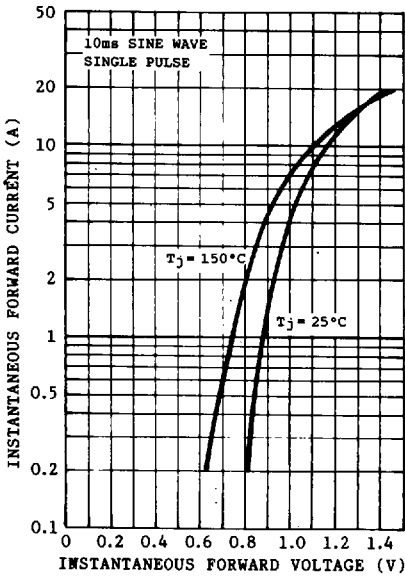


FIG.2-AVERAGE FORWARD POWER DISSIPATION

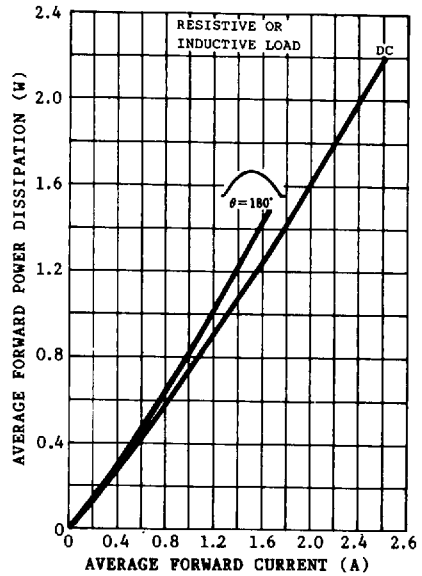


FIG.3-AVERAGE FORWARD CURRENT VS. AMBIENT TEMPERATURE

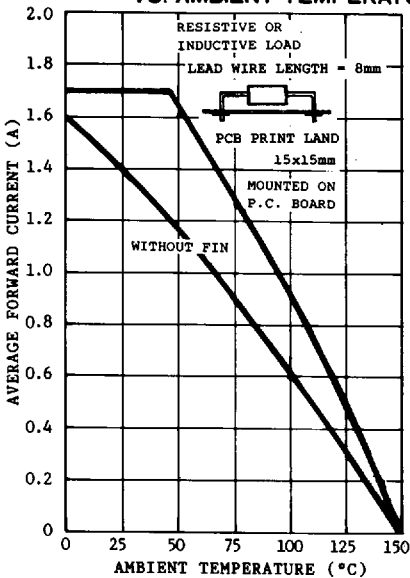


FIG.4-SURGE CURRENT RATINGS

