

## 54AC241 • 54ACT241 Octal Buffer/Line Driver with TRI-STATE® Outputs

### General Description

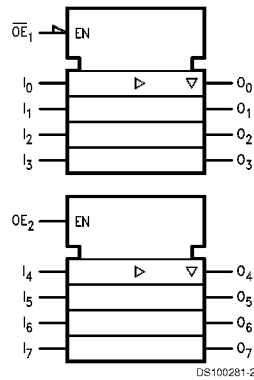
The 'AC/ACT241 is an octal buffer and line driver designed to be employed as a memory address driver, clock driver and bus-oriented transmitter or receiver which provides improved PC board density.

- Non-inverting TRI-STATE outputs drive bus lines or buffer memory address registers
- Outputs source/sink 24 mA
- 'ACT241 has TTL-compatible inputs
- Standard Microcircuit Drawing (SMD)
  - 'AC241: 5962-87551
  - 'ACT241: 5962-89847

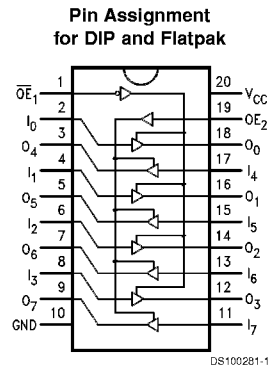
### Features

- $I_{CC}$  and  $I_{OZ}$  reduced by 50%

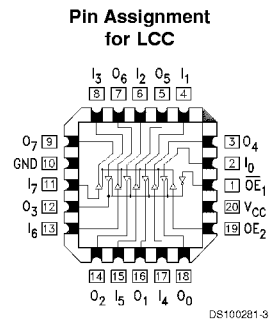
### Logic Symbol



### Connection Diagrams



| Pin Names         | Description                                 |
|-------------------|---|
| $\overline{OE}_1$ | TRI-STATE Output Enable Input               |
| $OE_2$            | TRI-STATE Output Enable Input (Active HIGH) |
| $I_0$ - $I_7$     | Inputs                                      |
| $O_0$ - $O_7$     | Outputs                                     |



TRI-STATE® is a registered trademark of National Semiconductor Corporation.  
FACT® is a registered trademark of Fairchild Semiconductor Corporation.

## Truth Tables

| Inputs            |       | Outputs<br>(Pins 12, 14, 16, 18) |
|-------------------|-------|----------------------------------|
| $\overline{OE}_1$ | $I_n$ |                                  |
| L                 | L     | L                                |
| L                 | H     | H                                |
| H                 | X     | Z                                |

| Inputs |       | Outputs<br>(Pins 3, 5, 7, 9) |
|--------|-------|------------------------------|
| $OE_2$ | $I_n$ |                              |
| H      | L     | L                            |
| H      | H     | H                            |
| L      | X     | Z                            |

H = HIGH Voltage Level  
L = LOW Voltage Level  
X = Immaterial  
Z = High Impedance

## Absolute Maximum Ratings (Note 1)

If Military/Aerospace specified devices are required, please contact the National Semiconductor Sales Office/Distributors for availability and specifications.

|  |                          |
|--|--------------------------|
| Supply Voltage ( $V_{CC}$ )              | -0.5V to +7.0V           |
| DC Input Diode Current ( $I_{IK}$ )      |                          |
| $V_I = -0.5V$                            | -20 mA                   |
| $V_I = V_{CC} + 0.5V$                    | +20 mA                   |
| DC Input Voltage ( $V_I$ )               | -0.5V to $V_{CC} + 0.5V$ |
| DC Output Diode Current ( $I_{OK}$ )     |                          |
| $V_O = -0.5V$                            | -20 mA                   |
| $V_O = V_{CC} + 0.5V$                    | +20 mA                   |
| DC Output Voltage ( $V_O$ )              | -0.5V to $V_{CC} + 0.5V$ |
| DC Output Source                         |                          |
| or Sink Current ( $I_O$ )                | ±50 mA                   |
| DC $V_{CC}$ or Ground Current            |                          |
| per Output Pin ( $I_{CC}$ or $I_{GND}$ ) | ±50 mA                   |
| Storage Temperature ( $T_{STG}$ )        | -65°C to +150°C          |
| Junction Temperature ( $T_J$ )           |                          |
| CDIP                                     | 175°C                    |

## Recommended Operating Conditions

|   |                 |
|---|-----------------|
| Supply Voltage ( $V_{CC}$ )                     |                 |
| 'AC   | 2.0V to 6.0V    |
| 'ACT  | 4.5V to 5.5V    |
| Input Voltage ( $V_I$ )                         | 0V to $V_{CC}$  |
| Output Voltage ( $V_O$ )                        | 0V to $V_{CC}$  |
| Operating Temperature ( $T_A$ )                 |                 |
| 54AC/ACT  | -55°C to +125°C |
| Minimum Input Edge Rate ( $\Delta V/\Delta t$ ) |                 |
| 'AC Devices                                     |                 |
| $V_{IN}$ from 30% to 70% of $V_{CC}$            |                 |
| $V_{CC}$ @ 3.3V, 4.5V, 5.5V                     | 125 mV/ns       |
| 'ACT Devices                                    |                 |
| $V_{IN}$ from 0.8V to 2.0V                      |                 |
| $V_{CC}$ @ 4.5V, 5.5V                           | 125 mV/ns       |

Note 1: Absolute maximum ratings are those values beyond which damage to the device may occur. The databook specifications should be met, without exception, to ensure that the system design is reliable over its power supply, temperature, and output/input loading variables. National does not recommend operation of FACT® circuits outside databook specifications.

## DC Characteristics for 'AC Family Devices

| Symbol   | Parameter                            | $V_{CC}$<br>(V) | 54AC                       | Units | Conditions                             |  |
|----------|--------------------------------------|-----------------|----------------------------|-------|--|--|
|          |                                      |                 | $T_A =$<br>-55°C to +125°C |       |  |  |
|          |                                      |                 | Guaranteed Limits          |       |  |  |
| $V_{IH}$ | Minimum High Level<br>Input Voltage  | 3.0             | 2.1                        | V     | $V_{OUT} = 0.1V$<br>or $V_{CC} - 0.1V$ |  |
|          |                                      | 4.5             | 3.15                       |       |  |  |
|          |                                      | 5.5             | 3.85                       |       |  |  |
| $V_{IL}$ | Maximum Low Level<br>Input Voltage   | 3.0             | 0.9                        | V     | $V_{OUT} = 0.1V$<br>or $V_{CC} - 0.1V$ |  |
|          |                                      | 4.5             | 1.35                       |       |  |  |
|          |                                      | 5.5             | 1.65                       |       |  |  |
| $V_{OH}$ | Minimum High Level<br>Output Voltage | 3.0             | 2.9                        | V     | $I_{OUT} = -50 \mu A$                  |  |
|          |                                      | 4.5             | 4.4                        |       |  |  |
|          |                                      | 5.5             | 5.4                        |       |  |  |
|          |                                      |                 | 3.0                        | 2.4   | V                                      | (Note 2)<br>$V_{IN} = V_{IL}$ or $V_{IH}$<br>$I_{OH} = -12 mA$<br>$I_{OH} = -24 mA$<br>$I_{OH} = -24 mA$ |
|          |                                      |                 | 4.5                        | 3.7   |  |  |
|          |                                      |                 | 5.5                        | 4.7   |  |  |
| $V_{OL}$ | Maximum Low Level<br>Output Voltage  | 3.0             | 0.1                        | V     | $I_{OUT} = 50 \mu A$                   |  |
|          |                                      | 4.5             | 0.1                        |       |  |  |
|          |                                      | 5.5             | 0.1                        |       |  |  |
|          |                                      |                 | 3.0                        | 0.50  | V                                      | (Note 2)<br>$V_{IN} = V_{IL}$ or $V_{IH}$<br>$I_{OL} = 12 mA$<br>$I_{OL} = 24 mA$<br>$I_{OL} = 24 mA$    |
|          |                                      |                 | 4.5                        | 0.50  |  |  |
|          |                                      |                 | 5.5                        | 0.50  |  |  |
| $I_{IN}$ | Maximum Input<br>Leakage Current     | 5.5             | ±1.0                       | µA    | $V_I = V_{CC}, GND$                    |  |

### DC Characteristics for 'AC Family Devices (Continued)

| Symbol           | Parameter                         | V <sub>CC</sub><br>(V) | 54AC                                | Units | Conditions  |
|------------------|-----------------------------------|------------------------|-------------------------------------|-------|---|
|                  |                                   |                        | T <sub>A</sub> =<br>-55°C to +125°C |       |   |
|                  |                                   |                        | Guaranteed Limits                   |       |   |
| I <sub>OZ</sub>  | Maximum TRI-STATE Leakage Current | 5.5                    | ±5.0                                | µA    | V <sub>I</sub> (OE) = V <sub>IL</sub> , V <sub>IH</sub><br>V <sub>I</sub> = V <sub>CC</sub> , GND<br>V <sub>O</sub> = V <sub>CC</sub> , GND |
| I <sub>OLD</sub> | Minimum Dynamic                   | 5.5                    | 50                                  | mA    | V <sub>OLD</sub> = 1.65V Max  |
| I <sub>OHD</sub> | Output Current (Note 3)           | 5.5                    | -50                                 | mA    | V <sub>OHD</sub> = 3.85V Min  |
| I <sub>CC</sub>  | Maximum Quiescent Supply Current  | 5.5                    | 80.0                                | µA    | V <sub>IN</sub> = V <sub>CC</sub><br>or GND   |

**Note 2:** All outputs loaded; thresholds on input associated with output under test.

**Note 3:** Maximum test duration 2.0 ms, one output loaded at a time.

**Note 4:** I<sub>IN</sub> and I<sub>CC</sub> @ 3.0V are guaranteed to be less than or equal to the respective limit @ 5.5V V<sub>CC</sub>.

I<sub>CC</sub> for 54AC @ 25°C is identical to 74AC @ 25°C.

### DC Characteristics for 'ACT Family Devices

| Symbol           | Parameter                         | V <sub>CC</sub><br>(V) | 54ACT                               | Units | Conditions   |
|------------------|-----------------------------------|------------------------|-------------------------------------|-------|--|
|                  |                                   |                        | T <sub>A</sub> =<br>-55°C to +125°C |       |  |
|                  |                                   |                        | Guaranteed Limits                   |       |  |
| V <sub>IH</sub>  | Minimum High Level Input Voltage  | 4.5                    | 2.0                                 | V     | V <sub>OUT</sub> = 0.1V<br>or V <sub>CC</sub> - 0.1V   |
|                  |                                   | 5.5                    | 2.0                                 |       |  |
| V <sub>IL</sub>  | Maximum Low Level Input Voltage   | 4.5                    | 0.8                                 | V     | V <sub>OUT</sub> = 0.1V<br>or V <sub>CC</sub> - 0.1V   |
|                  |                                   | 5.5                    | 0.8                                 |       |  |
| V <sub>OH</sub>  | Minimum High Level Output Voltage | 4.5                    | 4.4                                 | V     | I <sub>OUT</sub> = -50 µA  |
|                  |                                   | 5.5                    | 5.4                                 |       |  |
|                  |                                   | 4.5                    | 3.70                                | V     | (Note 5)<br>V <sub>IN</sub> = V <sub>IL</sub> or V <sub>IH</sub><br>I <sub>OH</sub> = -24 mA<br>I <sub>OH</sub> = -24 mA |
|                  |                                   | 5.5                    | 4.70                                |       |  |
| V <sub>OL</sub>  | Maximum Low Level Output Voltage  | 4.5                    | 0.1                                 | V     | I <sub>OUT</sub> = 50 µA   |
|                  |                                   | 5.5                    | 0.1                                 |       |  |
|                  |                                   | 4.5                    | 0.50                                | V     | (Note 5)<br>V <sub>IN</sub> = V <sub>IL</sub> or V <sub>IH</sub><br>I <sub>OL</sub> = 24 mA<br>I <sub>OL</sub> = 24 mA   |
|                  |                                   | 5.5                    | 0.50                                |       |  |
| I <sub>IN</sub>  | Maximum Input Leakage Current     | 5.5                    | ±1.0                                | µA    | V <sub>I</sub> = V <sub>CC</sub> , GND   |
| I <sub>OZ</sub>  | Maximum TRI-STATE Leakage Current | 5.5                    | ±5.0                                | µA    | V <sub>I</sub> = V <sub>IL</sub> , V <sub>IH</sub><br>V <sub>O</sub> = V <sub>CC</sub> , GND                             |
| I <sub>CCT</sub> | Maximum I <sub>CC</sub> /Input    | 5.5                    | 1.6                                 | mA    | V <sub>I</sub> = V <sub>CC</sub> - 2.1V  |
| I <sub>OLD</sub> | Minimum Dynamic                   | 5.5                    | 50                                  | mA    | V <sub>OLD</sub> = 1.65V Max   |
| I <sub>OHD</sub> | Output Current (Note 6)           | 5.5                    | -50                                 | mA    | V <sub>OHD</sub> = 3.85V Min   |
| I <sub>CC</sub>  | Maximum Quiescent Supply Current  | 5.5                    | 80.0                                | µA    | V <sub>IN</sub> = V <sub>CC</sub><br>or GND  |

**Note 5:** All outputs loaded; thresholds on input associated with output under test.

**Note 6:** Maximum test duration 2.0 ms, one output loaded at a time.

**Note 7:** I<sub>CC</sub> for 54ACT @ 25°C is identical to 74ACT @ 25°C.

## AC Electrical Characteristics

| Symbol           | Parameter           | V <sub>CC</sub><br>(V)<br>(Note 8) | 54AC  |      | Units |
|------------------|---------------------|------------------------------------|---|------|-------|
|                  |                     |                                    | T <sub>A</sub> = -55°C<br>to +125°C<br>C <sub>L</sub> = 50 pF |      |       |
|                  |                     |                                    | Min   | Max  |       |
| t <sub>PLH</sub> | Propagation Delay   | 3.3                                | 1.0   | 12.0 | ns    |
|                  | Data to Output      | 5.0                                | 1.0   | 9.5  |       |
| t <sub>PHL</sub> | Propagation Delay   | 3.3                                | 1.0   | 11.5 | ns    |
|                  | Data to Output      | 5.0                                | 1.0   | 9.0  |       |
| t <sub>PZH</sub> | Output Enable Time  | 3.3                                | 1.0   | 13.0 | ns    |
|                  |                     | 5.0                                | 1.0   | 10.0 |       |
| t <sub>PZL</sub> | Output Enable Time  | 3.3                                | 1.0   | 13.0 | ns    |
|                  |                     | 5.0                                | 1.0   | 10.0 |       |
| t <sub>PHZ</sub> | Output Disable Time | 3.3                                | 1.0   | 13.0 | ns    |
|                  |                     | 5.0                                | 1.0   | 11.5 |       |
| t <sub>PLZ</sub> | Output Disable Time | 3.3                                | 1.0   | 13.0 | ns    |
|                  |                     | 5.0                                | 1.0   | 11.5 |       |

Note 8: Voltage Range 3.3 is 3.3V ±3.3V  
Voltage Range 5.0 is 5.0V ±0.5V

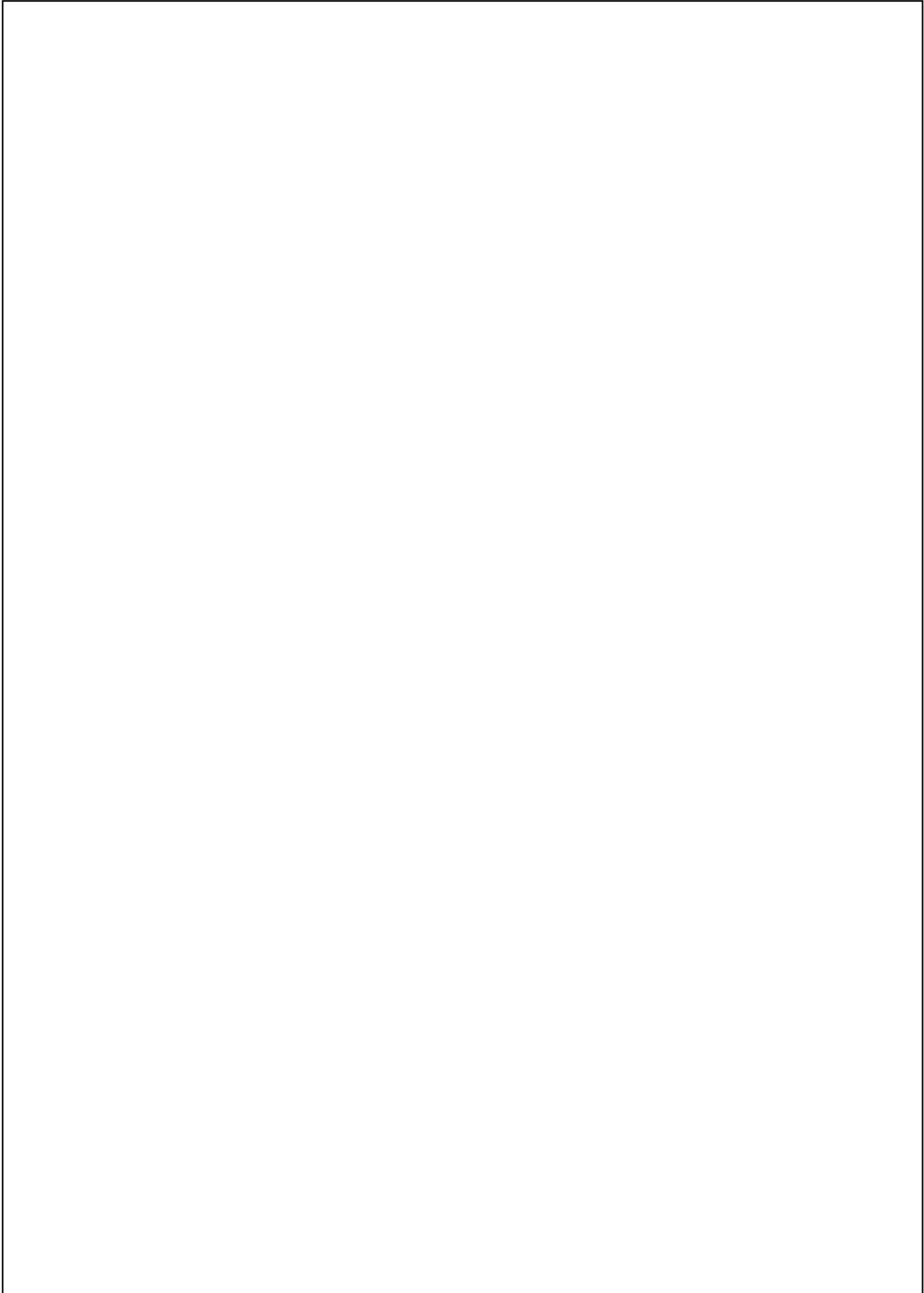
## AC Electrical Characteristics

| Symbol           | Parameter           | V <sub>CC</sub><br>(V)<br>(Note 9) | 54ACT   |      | Units |
|------------------|---------------------|------------------------------------|---|------|-------|
|                  |                     |                                    | T <sub>A</sub> = -55°C<br>to +125°C<br>C <sub>L</sub> = 50 pF |      |       |
|                  |                     |                                    | Min   | Max  |       |
| t <sub>PLH</sub> | Propagation Delay   | 5.0                                | 1.0   | 10.0 | ns    |
|                  | Data to Output      |                                    |   |      |       |
| t <sub>PHL</sub> | Propagation Delay   | 5.0                                | 1.0   | 10.0 | ns    |
|                  | Data to Output      |                                    |   |      |       |
| t <sub>PZH</sub> | Output Enable Time  | 5.0                                | 1.0   | 11.5 | ns    |
| t <sub>PZL</sub> | Output Enable Time  | 5.0                                | 1.0   | 12.5 | ns    |
| t <sub>PHZ</sub> | Output Disable Time | 5.0                                | 1.0   | 12.5 | ns    |
| t <sub>PLZ</sub> | Output Disable Time | 5.0                                | 1.0   | 12.5 | ns    |

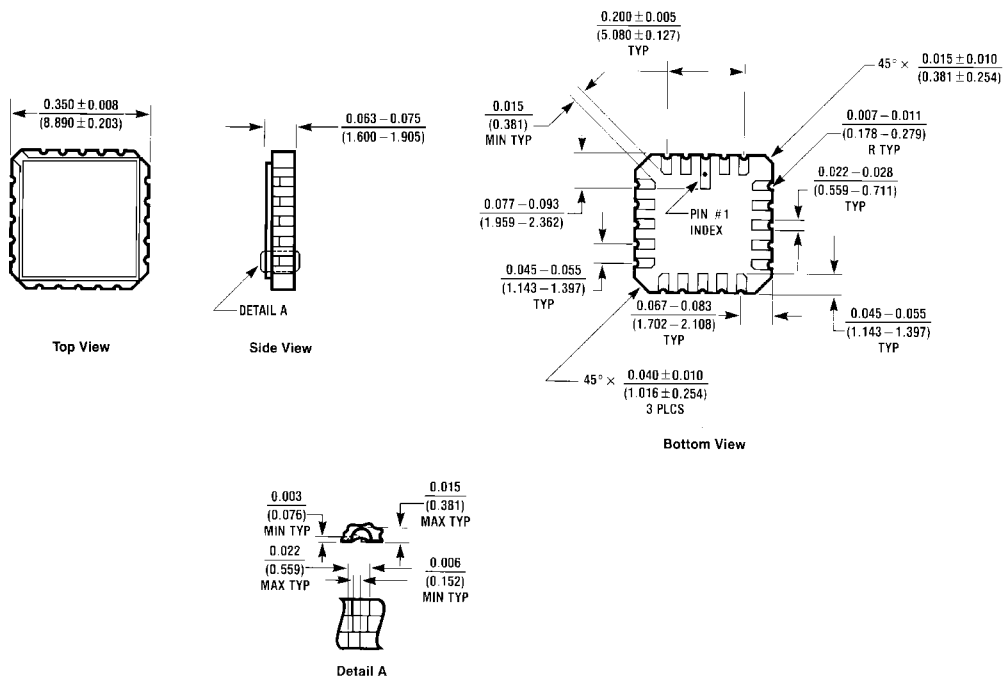
Note 9: Voltage Range 5.0 is 5.0V ±0.5V

## Capacitance

| Symbol          | Parameter                        | Typ  | Units | Conditions             |
|-----------------|----------------------------------|------|-------|------------------------|
| C <sub>IN</sub> | Input Capacitance                | 4.5  | pF    | V <sub>CC</sub> = OPEN |
| C <sub>PD</sub> | Power Dissipation<br>Capacitance | 45.0 | pF    | V <sub>CC</sub> = 5.0V |

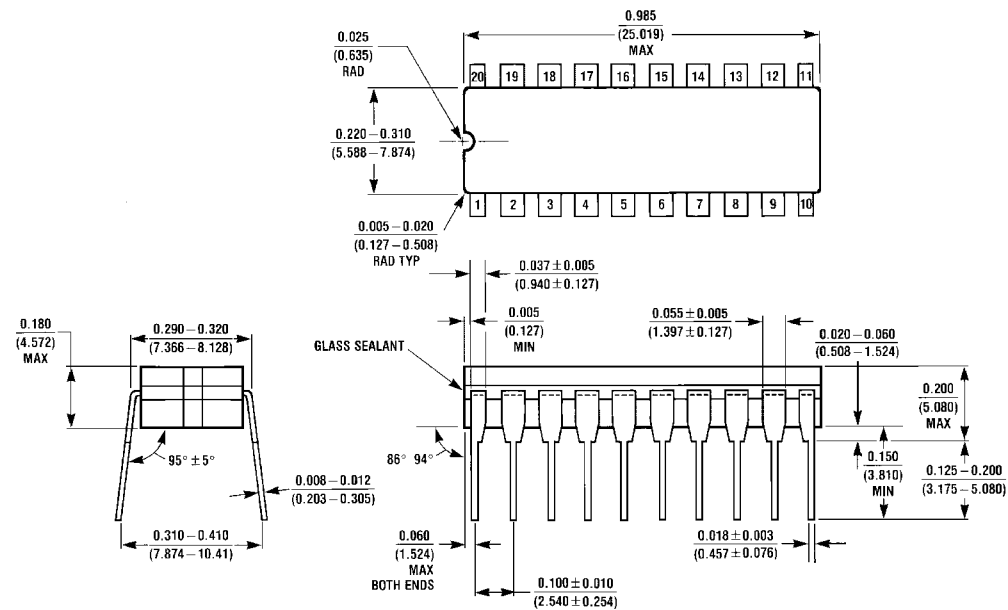


**Physical Dimensions** inches (millimeters) unless otherwise noted



E20A (REV D)

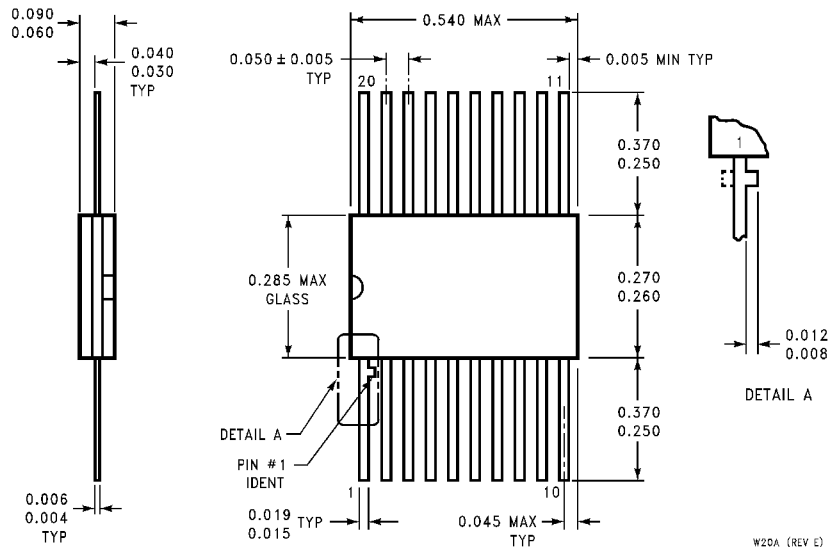
**20 Terminal Ceramic Leadless Chip Carrier (L)  
NS Package Number E20A**



J20A (REV M)

**20 Lead Ceramic Dual-In-Line Package (D)  
NS Package Number J20A**

**Physical Dimensions** inches (millimeters) unless otherwise noted (Continued)



**20 Lead Ceramic Flatpak (F)  
NS Package Number W20A**

W20A (REV E)

**LIFE SUPPORT POLICY**

NATIONAL'S PRODUCTS ARE NOT AUTHORIZED FOR USE AS CRITICAL COMPONENTS IN LIFE SUPPORT DEVICES OR SYSTEMS WITHOUT THE EXPRESS WRITTEN APPROVAL OF THE PRESIDENT OF NATIONAL SEMICONDUCTOR CORPORATION. As used herein:

1. Life support devices or systems are devices or systems which, (a) are intended for surgical implant into the body, or (b) support or sustain life, and whose failure to perform when properly used in accordance with instructions for use provided in the labeling, can be reasonably expected to result in a significant injury to the user.
2. A critical component in any component of a life support device or system whose failure to perform can be reasonably expected to cause the failure of the life support device or system, or to affect its safety or effectiveness.



**National Semiconductor Corporation**  
Americas  
Tel: 1-800-272-9959  
Fax: 1-800-737-7018  
Email: support@nsc.com

**National Semiconductor Europe**  
Fax: +49 (0) 1 80-530 85 86  
Email: europe.support@nsc.com  
Deutsch Tel: +49 (0) 1 80-530 85 85  
English Tel: +49 (0) 1 80-532 78 32  
Français Tel: +49 (0) 1 80-532 93 58  
Italiano Tel: +49 (0) 1 80-534 16 80

**National Semiconductor Asia Pacific Customer Response Group**  
Tel: 65-2544466  
Fax: 65-2504466  
Email: sea.support@nsc.com

**National Semiconductor Japan Ltd.**  
Tel: 81-3-5620-6175  
Fax: 81-3-5620-6179

www.national.com