

54ACTQ543

Quiet Series Octal Registered Transceiver with TRI-STATE® Outputs

General Description

The ACTQ543 is a non-inverting octal transceiver containing two sets of D-type registers for temporary storage of data flowing in either direction. Separate Latch Enable and Output Enable inputs are provided for each register to permit independent input and output control in either direction of data flow.

The ACTQ utilizes NSC Quiet Series technology to guarantee quiet output switching and improved dynamic threshold performance. FACT Quiet Series™ features GTO™ output control and undershoot corrector in addition to a split ground bus for superior performance.

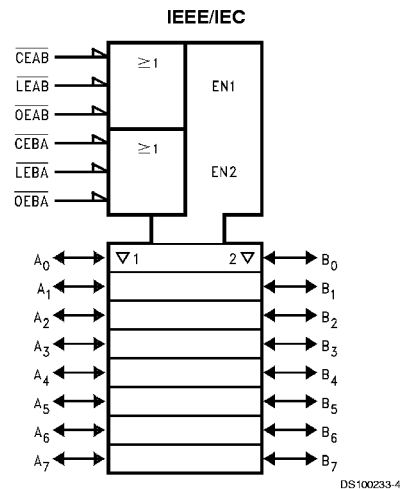
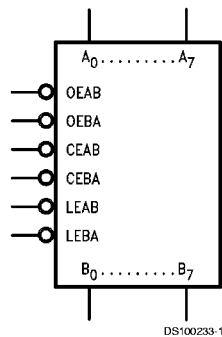
Features

- Guaranteed simultaneous switching noise level and dynamic threshold performance
- 8-bit octal latched transceiver
- Separate controls for data flow in each direction
- Back-to-back registers for storage
- Outputs source/sink 24 mA
- 4 kV minimum ESD immunity

Ordering Code

| Military | Package Number | Package Description |
|---------------|----------------|---|
| 54ACTQ543DMQB | J24A | 24-Lead Ceramic Dual-In-Line |
| 54ACTQ543FMQB | W24C | 24-Lead Cerpack |
| 54ACTQ543LMQB | E28A | 24-Lead Ceramic Leadless Chip Carrier, Type C |

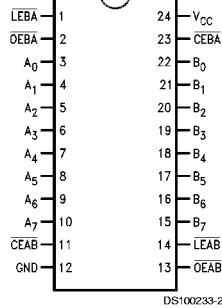
Logic Symbols



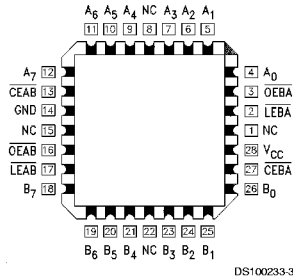
GTO™ is a trademark of National Semiconductor Corporation.
 TRI-STATE® is a registered trademark of National Semiconductor Corporation.
 FACT® is a registered trademark of Fairchild Semiconductor Corporation.
 FACT Quiet Series™ is a trademark of Fairchild Semiconductor Corporation.

Connection Diagrams

**Pin Assignment for
DIP and Flatpak**



**Pin Assignment
for LCC**



| Pin Names | Description |
|-------------------|---|
| \overline{OEAB} | A-to-B Output Enable Input (Active LOW) |
| \overline{OEBA} | B-to-A Output Enable Input (Active LOW) |
| \overline{CEAB} | A-to-B Enable Input (Active LOW) |
| \overline{CEBA} | B-to-A Enable Input (Active LOW) |
| \overline{LEAB} | A-to-B Latch Enable Input (Active LOW) |
| \overline{LEBA} | B-to-A Latch Enable Input (Active LOW) |
| A_0 – A_7 | A-to-B Data Inputs or B-to-A TRI-STATE Outputs |
| B_0 – B_7 | B-to-A Data Inputs or A-to-B TRI-STATE Outputs |

Functional Description

The ACTQ543 contains two sets of eight D-type latches, with separate input and output controls for each set. For data flow from A to B, for example, the A-to-B Enable (\overline{CEAB}) input must be LOW in order to enter data from A_0 – A_7 or take data from B_0 – B_7 , as indicated in the Data I/O Control Table. With \overline{CEAB} LOW, a LOW signal on the A-to-B Latch Enable (\overline{LEAB}) input makes the A-to-B latches transparent; a subsequent LOW-to-HIGH transition of the \overline{LEAB} signal puts the A latches in the storage mode and their outputs no longer change with the A inputs. With \overline{CEAB} and \overline{OEAB} both LOW, the TRI-STATE B output buffers are active and reflect the data present at the output of the A latches. Control of data flow from B to A is similar, but using the \overline{CEBA} , \overline{LEBA} and \overline{OEBA} inputs.

Data I/O Control Table

| Inputs | | | Latch Status | Output Buffers |
|-------------------|-------------------|-------------------|--------------|----------------|
| \overline{CEAB} | \overline{LEAB} | \overline{OEAB} | | |
| H | X | X | Latched | High Z |
| X | H | X | Latched | — |
| L | L | X | Transparent | — |
| X | X | H | — | High Z |
| L | X | L | — | Driving |

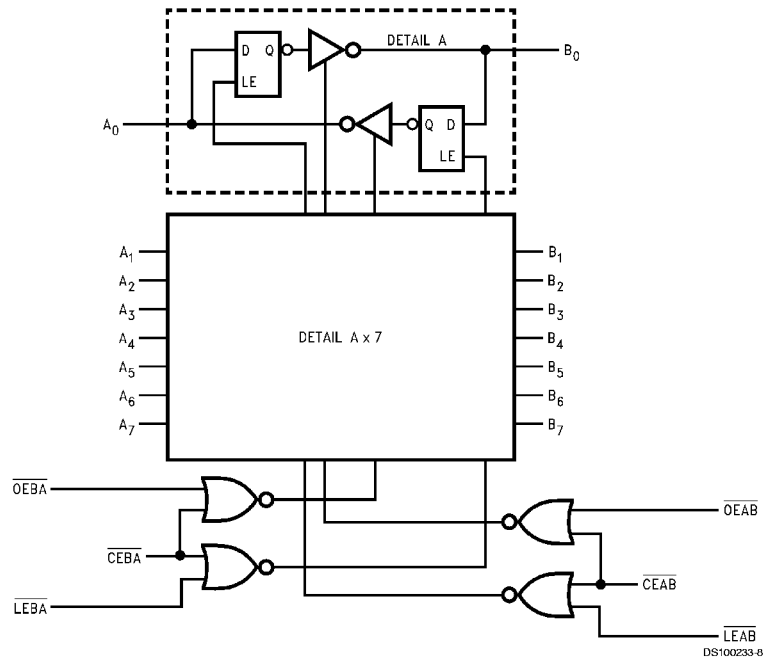
H = HIGH Voltage Level

L = LOW Voltage Level

X = Immaterial

A-to-B data flow shown; B-to-A flow control is the same, except using \overline{CEBA} , \overline{LEBA} and \overline{OEBA}

Logic Diagram



Please note that this diagram is provided only for the understanding of logic operations and should not be used to estimate propagation delays.

Absolute Maximum Ratings (Note 1)

If Military/Aerospace specified devices are required, please contact the National Semiconductor Sales Office/Distributors for availability and specifications.

| | |
|--|--------------------------|
| Supply Voltage (V_{CC}) | -0.5V to +7.0V |
| DC Input Diode Current (I_{IK}) | |
| $V_I = -0.5V$ | -20 mA |
| $V_I = V_{CC} + 0.5V$ | +20 mA |
| DC Input Voltage (V_I) | -0.5V to $V_{CC} + 0.5V$ |
| DC Output Diode Current (I_{OK}) | |
| $V_O = -0.5V$ | -20 mA |
| $V_O = V_{CC} + 0.5V$ | +20 mA |
| DC Output Voltage (V_O) | -0.5V to $V_{CC} + 0.5V$ |
| DC Output Source | |
| or Sink Current (I_O) | ±50 mA |
| DC V_{CC} or Ground Current | |
| per Output Pin (I_{CC} or I_{GND}) | ±50 mA |
| Storage Temperature (T_{STG}) | -65°C to +150°C |

DC Latch-up Source or

Sink Current ±300 mA

Junction Temperature (T_J)

CDIP 175°C

Recommended Operating Conditions

| | |
|---|-----------------|
| Supply Voltage V_{CC} | |
| 'ACTQ | 4.5V to 5.5V |
| Input Voltage (V_I) | 0V to V_{CC} |
| Output Voltage (V_O) | 0V to V_{CC} |
| Operating Temperature (T_A) (Note 2) | |
| 54ACTQ | -55°C to +125°C |
| Minimum Input Edge Rate $\Delta V/\Delta t$ | |
| 'ACTQ Devices | |
| V_{IN} from 0.8V to 2.0V | |
| V_{CC} @ 4.5V, 5.5V | 125 mV/ns |

Note 1: Absolute maximum ratings are those values beyond which damage to the device may occur. The databook specifications should be met, without exception, to ensure that the system design is reliable over its power supply, temperature, and output/input loading variables. National does not recommend operation of FACT® circuits outside databook specifications.

Note 2: All commercial packaging is not recommended for applications requiring greater than 2000 temperature cycles from -40°C to +125°C.

DC Characteristics for 'ACTQ Family Devices

| Symbol | Parameter | V_{CC} (V) | 54ACTQ | Units | Conditions |
|-----------|---|-----------------|-------------------|-------|---|
| | | | $T_A =$ | | |
| | | | -55°C to +125°C | | |
| | | | Guaranteed Limits | | |
| V_{IH} | Minimum High Level Input Voltage | 4.5 | 2.0 | V | $V_{OUT} = 0.1V$ or $V_{CC} - 0.1V$ |
| | | 5.5 | 2.0 | | |
| V_{IL} | Maximum Low Level Input Voltage | 4.5 | 0.8 | V | $V_{OUT} = 0.1V$ or $V_{CC} - 0.1V$ |
| | | 5.5 | 0.8 | | |
| V_{OH} | Minimum High Level Output Voltage | 4.5 | 4.4 | V | $I_{OUT} = -50 \mu A$ |
| | | 5.5 | 5.4 | | |
| | | 4.5 | 3.70 | V | (Note 3) $V_{IN} = V_{IL}$ or V_{IH} $I_{OH} = -24 mA$ $I_{OH} = -24 mA$ |
| | | 5.5 | 4.70 | | |
| V_{OL} | Maximum Low Level Output Voltage | 4.5 | 0.1 | V | $I_{OUT} = 50 \mu A$ |
| | | 5.5 | 0.1 | | |
| | | 4.5 | 0.50 | V | (Note 3) $V_{IN} = V_{IL}$ or V_{IH} $I_{OL} = 24 mA$ $I_{OL} = 24 mA$ |
| | | 5.5 | 0.50 | | |
| I_{IN} | Maximum Input Leakage Current | 5.5 | ±1.0 | μA | $V_I = V_{CC}, GND$ |
| I_{OZT} | Maximum I/O Leakage Current | 5.5 | ±10 | μA | $V_{(OE)} = V_{IL}, V_{IH}$ $V_O = V_{CC}, GND$ |
| I_{CCT} | Maximum I_{CC} /Input | 5.5 | 1.6 | mA | $V_I = V_{CC} - 2.1V$ |
| I_{OLD} | Minimum Dynamic Output Current (Note 4) | 5.5 | | mA | $V_{OLD} = 1.65V Max$ |
| I_{OHD} | | 5.5 | -50 | mA | $V_{OHD} = 3.85V Min$ |
| I_{CC} | Maximum Quiescent Supply Current | 5.5 | 160.0 | μA | $V_{IN} = V_{CC}$ or GND (Note 5) |

DC Characteristics for 'ACTQ Family Devices (Continued)

| Symbol | Parameter | V _{CC} (V) | 54ACTQ | | Units | Conditions |
|------------------|---|------------------------|-------------------------------------|--|-------|--------------|
| | | | T _A = -55°C to +125°C | | | |
| | | | Guaranteed Limits | | | |
| V _{OLP} | Quiet Output Maximum Dynamic V _{OL} | 5.0 | 1.5 | | V | (Notes 6, 7) |
| V _{OLV} | Quiet Output Minimum Dynamic V _{OL} | 5.0 | -1.2 | | V | (Notes 6, 7) |

Note 3: Maximum of 8 outputs loaded; thresholds on input associated with output under test.

Note 4: Maximum test duration 2.0 ms, one output loaded at a time.

Note 5: I_{CC} for 54ACTQ @ 25°C is identical to 74ACTQ@ 25°C.

Note 6: Plastic DIP package.

Note 7: Max number of outputs defined as (n). (n-1) Data Inputs are driven 0V to 3V, one output @ GND.

Note 8: Max number of Data Inputs (n) switching. (n-1) Inputs switching 0V to 3V ('ACTQ). Input-under-test switching: 3V to threshold (V_{LD}), 0V to threshold (V_{HD}). f = 1 MHz.

AC Electrical Characteristics

| Symbol | Parameter | V _{CC} (V) (Note 9) | 54ACTQ | | Units | Fig. No. |
|--------------------------------------|---|------------------------------------|-------------------------------------|------|-------|-------------|
| | | | T _A = -55°C to +125°C | | | |
| | | | Min | Max | | |
| t _{PLH} t _{PHL} | Propagation Delay Transparent Mode A _n to B _n or B _n to A _n | 5.0 | 2.0 | 9.5 | ns | Figure 4 |
| t _{PLH} t _{PHL} | Propagation Delay LEBA, LEAB to A _n , B _n | 5.0 | 2.0 | 11.0 | ns | Figure 4 |
| t _{PZH} t _{PZL} | Output Enable Time OEBA or OEAB to A _n or B _n CEBA or CEAB to A _n or B _n | 5.0 | 1.5 | 13.0 | ns | Figure 6 |
| t _{PHZ} t _{PLZ} | Output Disable Time OEBA or OEAB to A _n or B _n CEBA or CEAB to A _n or B _n | 5.0 | 1.5 | 9.0 | ns | Figure 6 |

Note 9: Voltage Range 5.0 is 5.0V ±0.5V

AC Operating Requirements

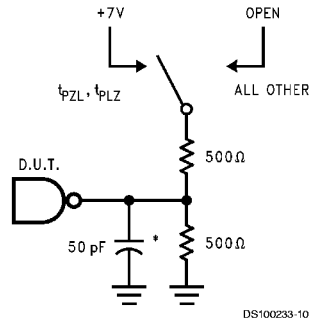
| Symbol | Parameter | V _{CC} (V) (Note 10) | 54ACTQ | | Units | Fig. No. |
|----------------|---|-------------------------------------|---|--|-------|-------------|
| | | | T _A = -55°C to +125°C | | | |
| | | | C _L = 50 pF Guaranteed Minimum | | | |
| t _s | Setup Time, HIGH or LOW A _n or B _n to LEBA or LEAB | 5.0 | 3.0 | | ns | Figure 7 |
| t _h | Hold Time, HIGH or LOW A _n or B _n to LEBA or LEAB | 5.0 | 1.5 | | ns | Figure 7 |
| t _w | Latch Enable Pulse Width, LOW | 5.0 | 4.0 | | ns | Figure 5 |

Note 10: Voltage Range 5.0 is 5.0V ±0.5V

Capacitance

| Symbol | Parameter | Typ | Units | Conditions |
|----------|-------------------------------|------|-------|-----------------|
| C_{IN} | Input Capacitance | 4.5 | pF | $V_{CC} = OPEN$ |
| C_{PD} | Power Dissipation Capacitance | 70.0 | pF | $V_{CC} = 5.0V$ |

AC Loading



*Includes jig and probe capacitance

FIGURE 1. Standard AC Test Load

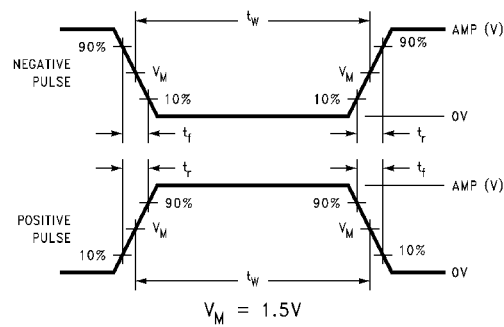


FIGURE 2. Test Input Signal Levels

| Amplitude | Rep. Rate | t_w | t_r | t_f |
|-----------|-----------|--------|--------|--------|
| 3.0V | 1 MHz | 500 ns | 2.5 ns | 2.5 ns |

FIGURE 3. Test Input Signal Requirements

AC Waveforms

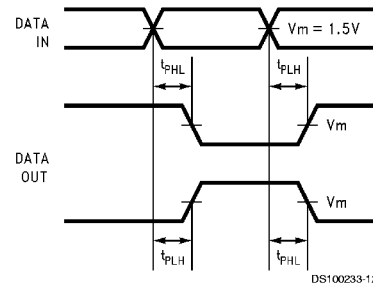


FIGURE 4. Propagation Delay Waveforms for Inverting and Non-Inverting Functions

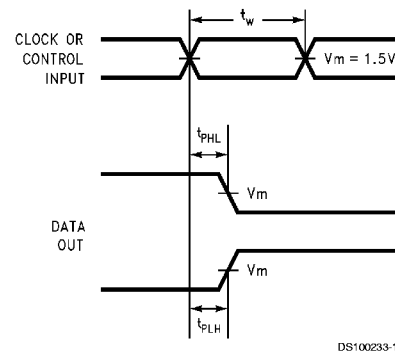


FIGURE 5. Propagation Delay, Pulse Width Waveforms

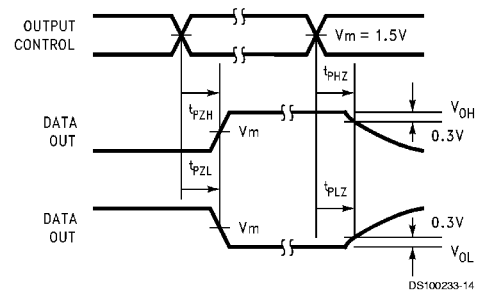


FIGURE 6. TRI-STATE Output High and Low Enable and Disable Time

AC Waveforms (Continued)

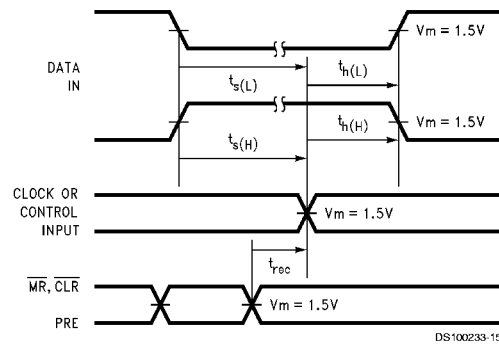
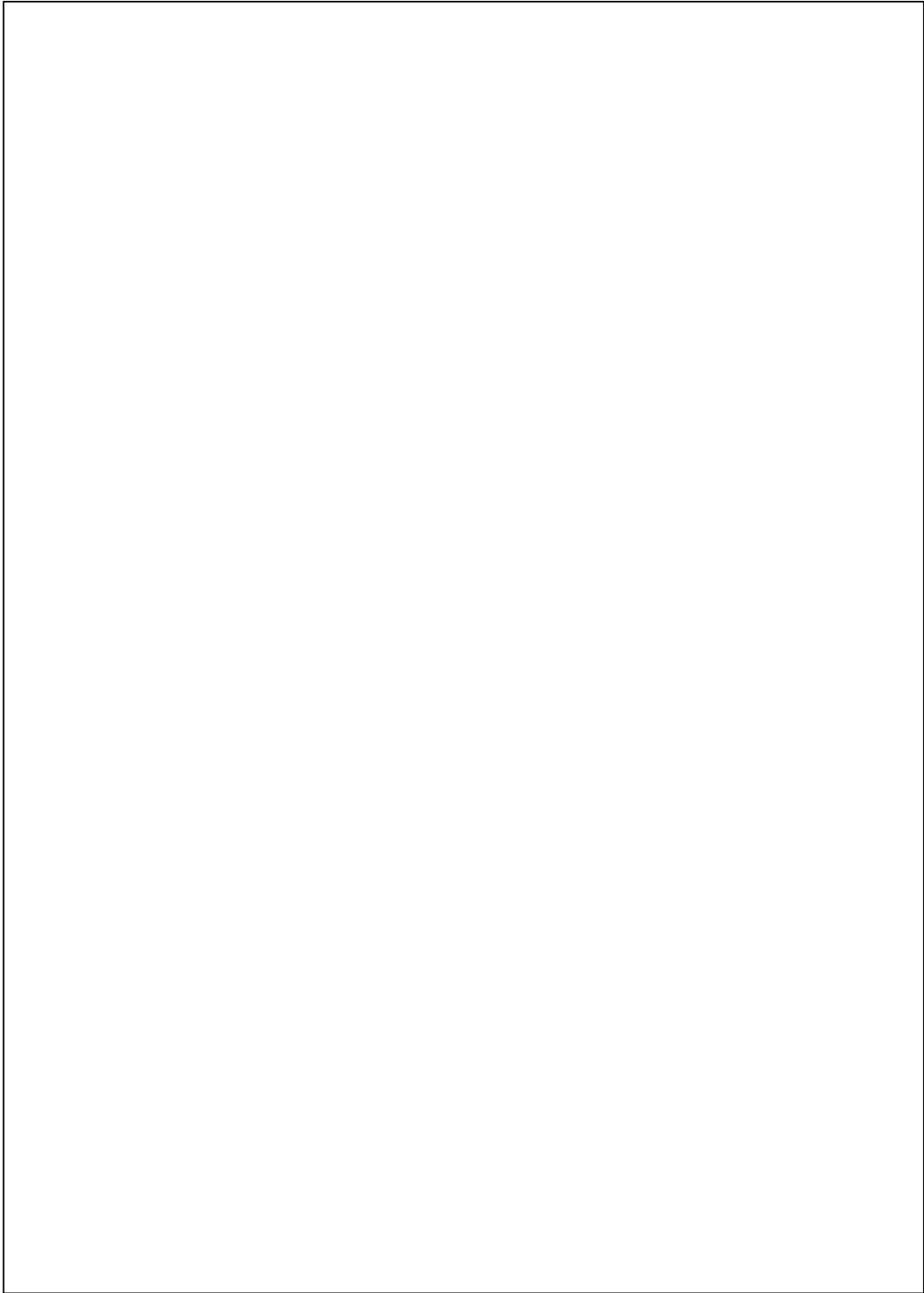
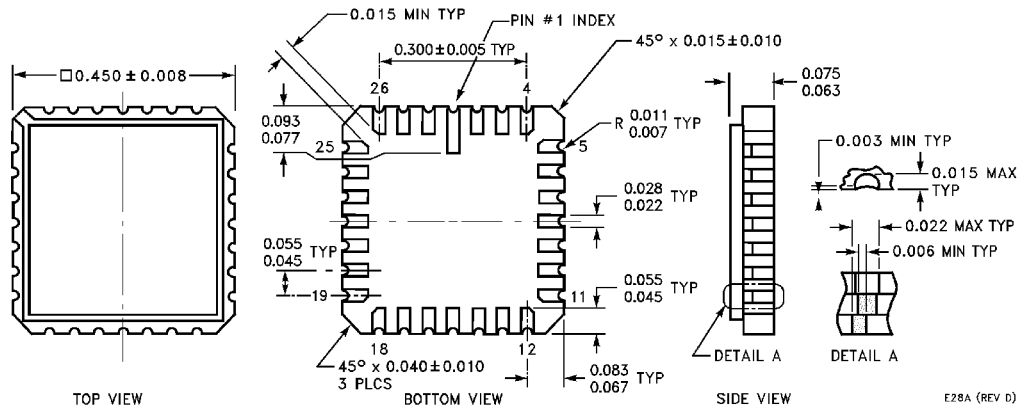


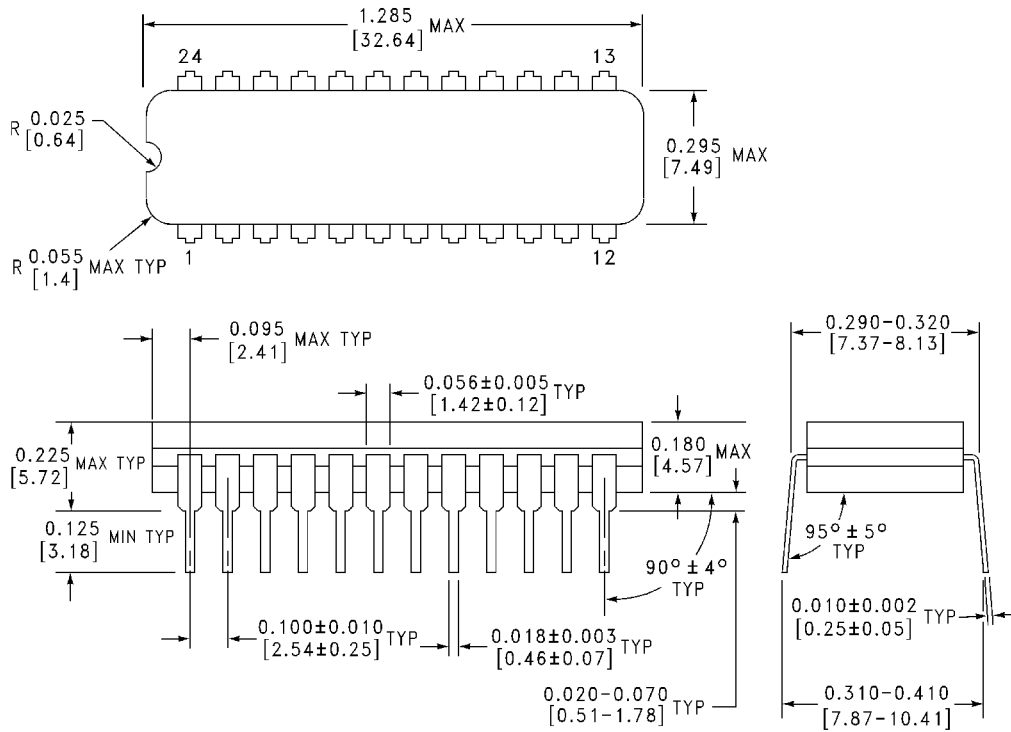
FIGURE 7. Setup Time, Hold Time and Recovery Time Waveforms



Physical Dimensions inches (millimeters) unless otherwise noted



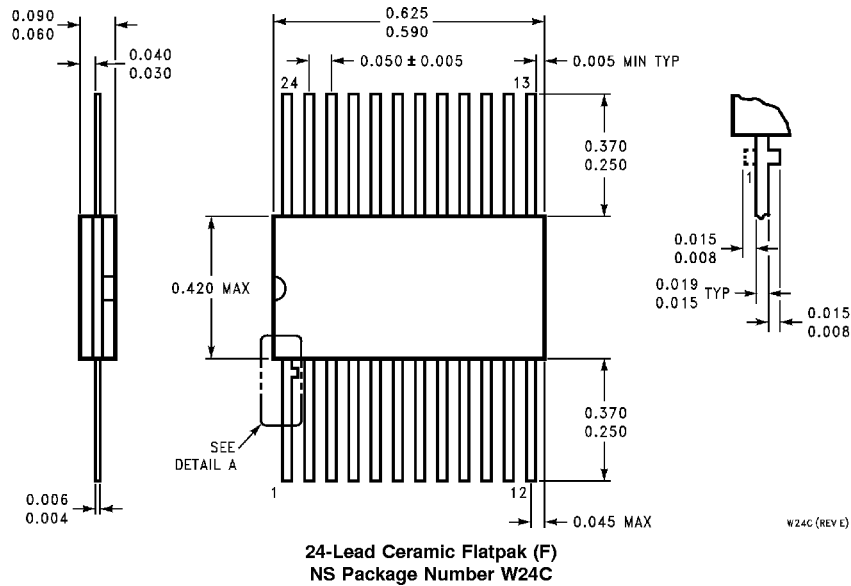
28-Terminal Ceramic Leadless Chip Carrier (L)
NS Package Number E28A



24-Lead Ceramic Dual-In-Line Package (D)
NS Package Number J24F

J24F (REV. H)

Physical Dimensions inches (millimeters) unless otherwise noted (Continued)



LIFE SUPPORT POLICY

NATIONAL'S PRODUCTS ARE NOT AUTHORIZED FOR USE AS CRITICAL COMPONENTS IN LIFE SUPPORT DEVICES OR SYSTEMS WITHOUT THE EXPRESS WRITTEN APPROVAL OF THE PRESIDENT OF NATIONAL SEMICONDUCTOR CORPORATION. As used herein:

1. Life support devices or systems are devices or systems which, (a) are intended for surgical implant into the body, or (b) support or sustain life, and whose failure to perform when properly used in accordance with instructions for use provided in the labeling, can be reasonably expected to result in a significant injury to the user.
2. A critical component in any component of a life support device or system whose failure to perform can be reasonably expected to cause the failure of the life support device or system, or to affect its safety or effectiveness.



National Semiconductor Corporation
Americas
Tel: 1-800-272-9959
Fax: 1-800-737-7018
Email: support@nsc.com

National Semiconductor Europe
Fax: +49 (0) 1 80-530 85 86
Email: europe.support@nsc.com
Deutsch Tel: +49 (0) 1 80-530 85 85
English Tel: +49 (0) 1 80-532 78 32
Français Tel: +49 (0) 1 80-532 93 58
Italiano Tel: +49 (0) 1 80-534 16 80

National Semiconductor Asia Pacific Customer Response Group
Tel: 65-2544466
Fax: 65-2504466
Email: sea.support@nsc.com

National Semiconductor Japan Ltd.
Tel: 81-3-5620-6175
Fax: 81-3-5620-6179

www.national.com