

Product Upgrade Notice:

No More Minimum Load Limit & 62368-1 standard replacement

For G3 Family

Date : 2019/07/19

By Benson Guo/Product Manger

benson@meanwell.com

Since the launch of the G3 family (RS, RD, RID, RT, and RQ series), it has been the first choice for multi-output models due to its high CP values. There was a minimum load limit for the multiple sets of output models, which is a common specification. However, to fulfill more application demands, the optimization this time brings more opportunities to the G3 Series.

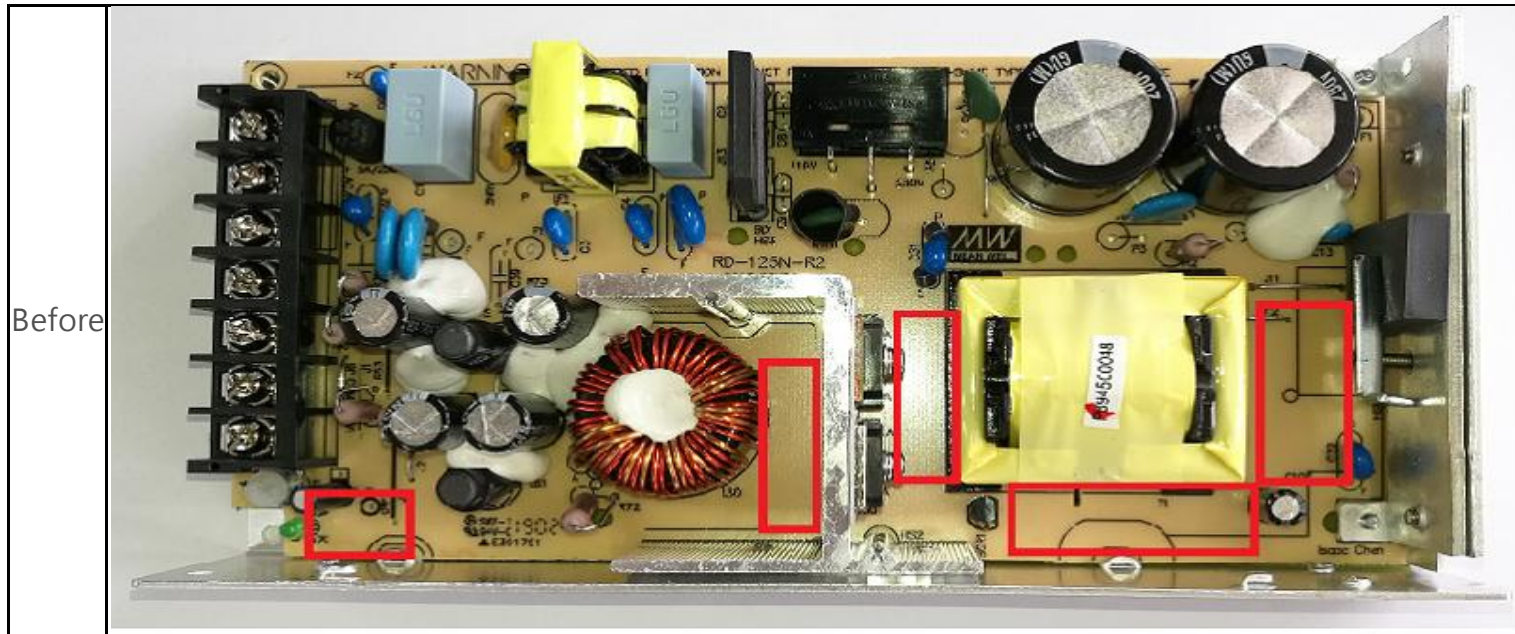
By reducing the minimum load of multiple output products to 0 (Figure 1), the occasion that the unstable output voltage occurred when no load is used only happens in the past. Also, another optimization is the proportion of automatic processing is increased. The DIP parts of the products are changed into SMD processing (Figure 2). The internal components of RS-25 series are changed from the original screw locking method to the upper and lower case locking method. (Figure 3) In addition, the G3 family will replace the Information Technology Equipment safety regulation with IEC62368-1 by the end of July in 2019.

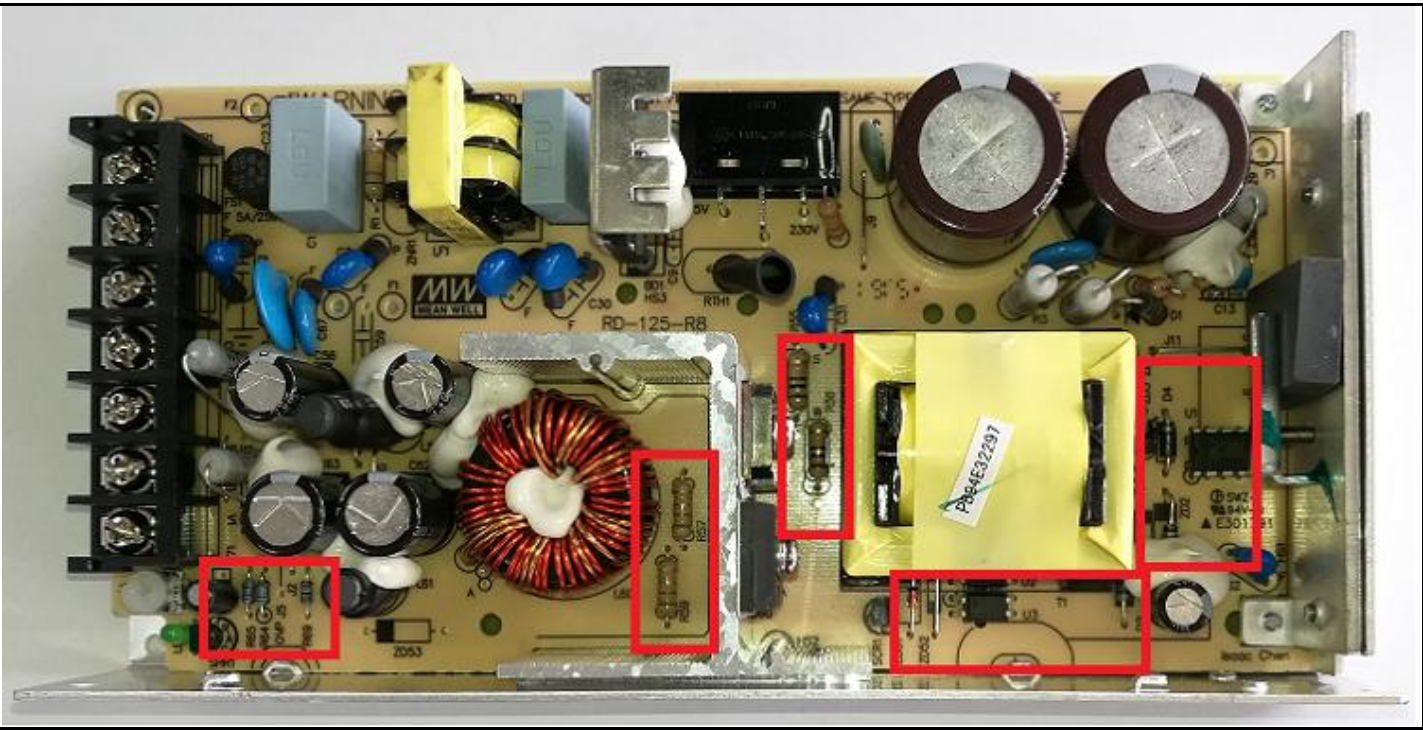
The following standard product series (Figure 4) are upgraded to the new version after the production dated 2019/06/04 (production lot.: Y1906D). MEAN WELL fully takes in any relevant cost, making no adjustment on the pricing. Should there be any questions, please refer to the updated specification on the website or contact MEAN WELL sales representatives.

Figure 1.

Before	MODEL		RD-85A		RD-85B	
	OUTPUT NUMBER	CH1	CH2	CH1	CH2	
	DC VOLTAGE	5V	12V	5V	24V	
	RATED CURRENT	8A	4A	8A	2A	
	CURRENT RANGE	Note,6 2 ~ 10A	0.3 ~ 5A	2 ~ 10A	0.3 ~ 2.5A	
After	MODEL		RD-85A		RD-85B	
	OUTPUT NUMBER	CH1	CH2	CH1	CH2	
	DC VOLTAGE	5V	12V	5V	24V	
	RATED CURRENT	8A	4A	8A	2A	
	CURRENT RANGE	Note,6 0 ~ 10A	0 ~ 5A	0 ~ 10A	0 ~ 2.5A	

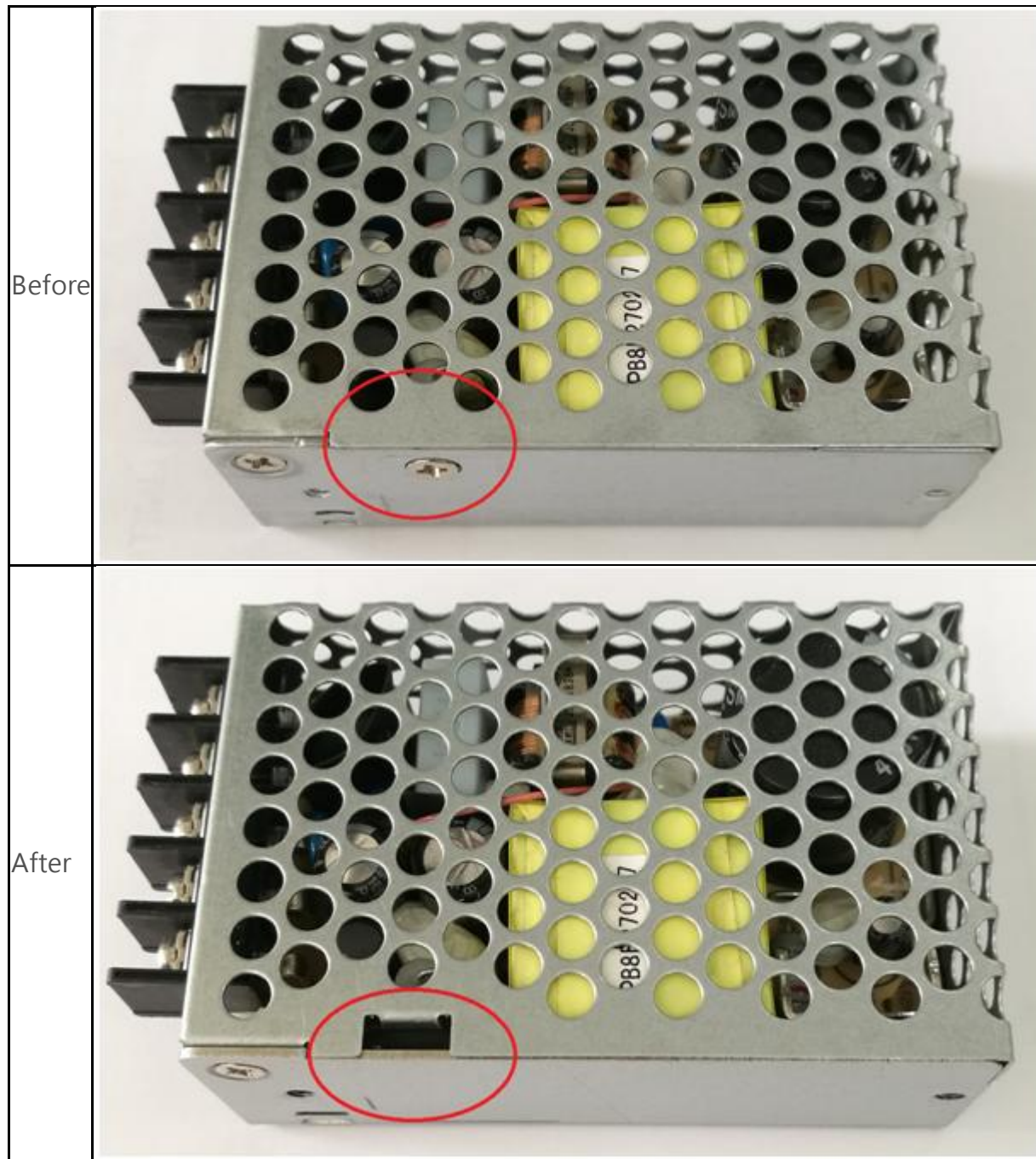
Figure 2.





After

Figure 3.



Revised Models	Upgraded Date	Lot. No.
RS-15/25	2019/6/4	Y1906D
RS-35	2019/7/16	Y1908D
RS-75	2019/8/6	Y1910B
RS-100/150-12/24	2019/8/6	Y1908D
RD-35	2019/8/6	Y1909B
RS-100/150-3.3/5/15/48	2019/8/6	Y1909B
RD/RID/RT/RQ-50	2019/8/6	Y1909B
RD/RID/RT/RQ-65	2019/8/6	Y1909B
RD/RID/RT/RQ-85	2019/8/6	Y1909B
RD/RID/RT/RQ-125	2019/8/6	Y1909B

MEAN WELL ENTERPRISES CO., LTD
Marketing Department

TTI Affected Part Numbers Vendor CODE

G3 Family

RS/RD/RID/RT /RQ Series	
RS-100-12	MNW
RS-100-15	MNW
RS-100-24	MNW
RS-100-3.3	MNW
RS-100-48	MNW
RS-100-5	MNW
RS-150-12	MNW
RS-150-15	MNW
RS-150-24	MNW
RS-150-3.3	MNW
RS-150-48	MNW
RS-150-5	MNW
RS-15-12	MNW
RS-15-15	MNW
RS-15-24	MNW
RS-15-3.3	MNW
RS-15-48	MNW
RS-15-5	MNW
RS-25-12	MNW
RS-25-15	MNW
RS-25-24	MNW
RS-25-3.3	MNW
RS-25-48	MNW
RS-25-5	MNW
RS-35-12	MNW
RS-35-15	MNW
RS-35-24	MNW
RS-35-3.3	MNW
RS-35-48	MNW
RS-35-5	MNW
RS-50-12	MNW
RS-50-15	MNW
RS-50-24	MNW
RS-50-3.3	MNW
RS-50-48	MNW
RS-50-5	MNW
RS-75-12	MNW
RS-75-15	MNW
RS-75-24	MNW
RS-75-3.3	MNW
RS-75-48	MNW
RS-75-5	MNW
RD-125A	MNW
RD-125B	MNW

RD-3513	MNW
RD-35A	MNW
RD-35B	MNW
RD-50A	MNW
RD-50B	MNW
RD-65A	MNW
RD-65B	MNW
RD-85A	MNW
RD-85B	MNW
RID-50A	MNW
RID-50B	MNW
RID-65A	MNW
RID-65B	MNW
RID-85A	MNW
RID-85B	MNW
RT-125A	MNW
RT-125B	MNW
RT-125C	MNW
RT-125D	MNW
RT-50A	MNW
RT-50B	MNW
RT-50C	MNW
RT-50D	MNW
RT-65A	MNW
RT-65B	MNW
RT-65C	MNW
RT-65D	MNW
RT-85A	MNW
RT-85B	MNW
RT-85C	MNW
RT-85D	MNW
RQ-125B	MNW
RQ-125C	MNW
RQ-125D	MNW
RQ-50B	MNW
RQ-50C	MNW
RQ-50D	MNW
RQ-65B	MNW
RQ-65C	MNW
RQ-65D	MNW
RQ-85B	MNW
RQ-85C	MNW
RQ-85D	MNW