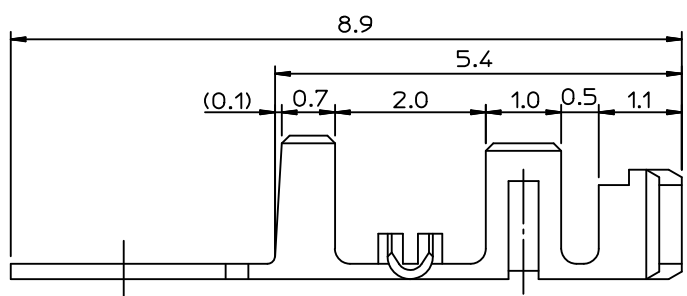


NOTE

1. MATERIAL
 - 1) BRASS (CDA 260)
 - 2) PHOSPHOR BRONZE (CDA 510)
2. PLATING
 - 1) PRE PLATED - TIN OVER COPPER
 - 2) POST PLATED - TIN/LEAD OVER COPPER
3. USED HOUSING : 35022-00**/35023-00**/68418-**00
- ④ 4. CAMBER : 30/1,000 MAX.



POST-PLATED	PHOS. BRON.	AWG #24-#30 (INS. DIA: Ø 1.5 MAX.)	1.8	1.9	R0.4	0.85	350211310	35021-1310
PRE-PLATED	PHOS. BRON.	AWG #22-#28 (INS. DIA: Ø1.9 MAX.)	2.5	2.5	R0.7	1.05	350211301	35021-1301
	BRASS						350211201	35021-1201
PRE-PLATED	PHOS. BRON.	AWG #22-#28 (INS. DIA: Ø1.9 MAX.)	2.5	2.5	R0.7	1.05	350211101	35021-1101
	BRASS						350211001	35021-1001
POST-PLATED	PHOS. BRON.						350211110	35021-1110
PLATING	MATERIAL	WIRE RANGE	D	C	B	A	MAT'L NO.	ENG NO.

REVISED
 EC NO: KOR2011-0132
 DRW: SUNGHYUK JOO 2011/05/24
 CHKD: YSOOK IM 2011/05/24
 APPR: YUNSIKK IM 2011/06/03

QUALITY SYMBOLS
 ▼=0
 C=0

GENERAL TOLERANCES (UNLESS SPECIFIED)

	mm	INCH
4 PLACES	± ---	± ---
3 PLACES	± ---	± ---
2 PLACES	± ---	± ---
1 PLACE	± 0.3	± ---
ANGULAR ± 1 °		

DRAFT WHERE APPLICABLE MUST REMAIN WITHIN DIMENSIONS

DIMENSION STYLE
 MM ONLY

DRAWN BY: HSSHIN
 CHECKED BY: JKOH
 APPROVED BY: _____

MATERIAL NO.
 SEE TABLE

SIZE
 A3

SCALE
 15:1

DESIGN UNITS
 METRIC

THIRD ANGLE PROJECTION

TITLE
 R/A B-IN TERMINAL

MOLEX INCORPORATED

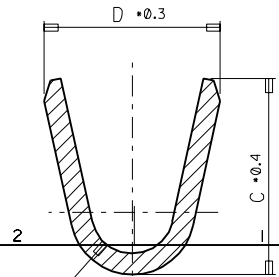
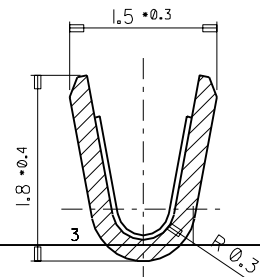
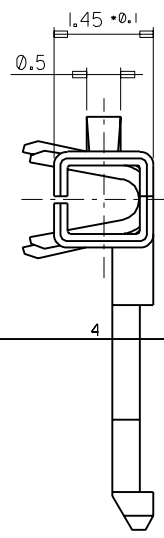
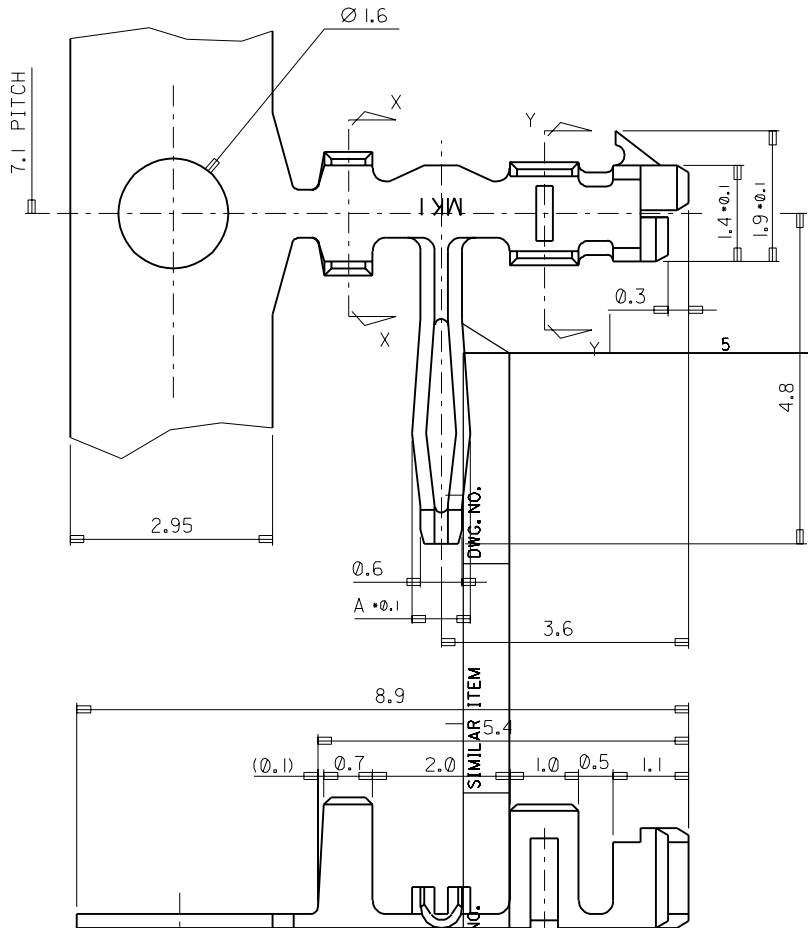
DOCUMENT NO.
 SD-35021-001

SHEET NO.
 1 OF 1

THIS DRAWING CONTAINS INFORMATION THAT IS PROPRIETARY TO MOLEX INCORPORATED AND SHOULD NOT BE USED WITHOUT WRITTEN PERMISSION

DO NOT SCALE DRAWING
DIMENSION IN METRIC

PROJECT NO. 35021-I-1***
SIMILAR ITEM 35021-I-1***
DWG. NO. SD 35021-I-1***



- NOTE
- MATERIAL
 - BRASS (CDA 260)
 - PHOSPHOR BRONZE (CDA 510)
 - PLATING
 - PRE PLATED - TIN OVER COPPER
 - POST PLATED - TIN/LEAD OVER COPPER
 - USED HOUSING : 35022-00** / 35023-00**

POST-PLATED	PHOS. BRON.	AWG #24-#30						35021-1310
PRE-PLATED	PHOS. BRON.	(INS. DIA: Ø 1.5 MAX.)	1.8	1.9	R0.4	0.85		35021-1301
	BRASS							35021-1201
PRE-PLATED	PHOS. BRON.	AWG #22-#30						35021-1101
	BRASS	(INS. DIA: Ø 1.9 MAX.)	2.5	2.5	R0.7	1.05		35021-1001
POST-PLATED	PHOS. BRON.							35021-1110
PLATING	MATERIAL	WIRE RANGE	D	C	B	A		ENG NO.

REVISED EC NO. KOR1998-0091 DRWN: HSSHIN(980609) CHK: JKOH APPR: CWLEE	QUALITY SYMBOLS MAJOR CRITICAL	GENERAL TOLERANCES: (UNLESS SPECIFIED)		SCALE 15-1	DESIGN UNITS <input checked="" type="checkbox"/> mm <input type="checkbox"/> INCH	THIRD ANGLE PROJECTION	DIMENSIONS: <input type="checkbox"/> mm <input type="checkbox"/> INCH <input checked="" type="checkbox"/> mm ONLY	SHT	REV	
		4 PLACES ±0.	±.	DRAWN BY & DATE HSSHIN	TITLE: R/A B-IN TERMINAL					
		3 PLACES ±0.	±.	CHECKED BY & DATE JKOH	APPROVED BY & DATE CWLEE					
		2 PLACES ±0.	±.	APPROVED BY & DATE CWLEE		MATERIAL NO. 350-21-1***		DRAWING NO. SD 35021-I-1***		SHEET NO. 10F1
1 PLACE ±0.3	±.	ANGULAR: ± 1 °		CAD FILENAME SD35021.DGN		SIZE B				
REVISIONS		THIS DRAWING CONTAINS INFORMATION THAT IS PROPRIETARY TO MOLEX INCORPORATED AND SHOULD NOT BE USED WITHOUT WRITTEN PERMISSION.								