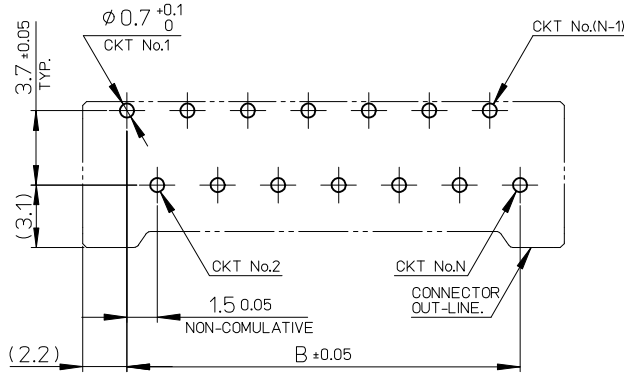
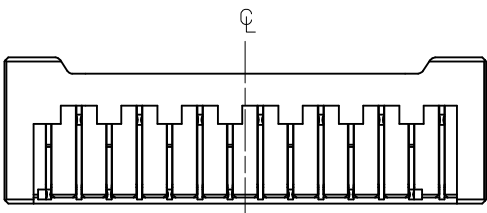
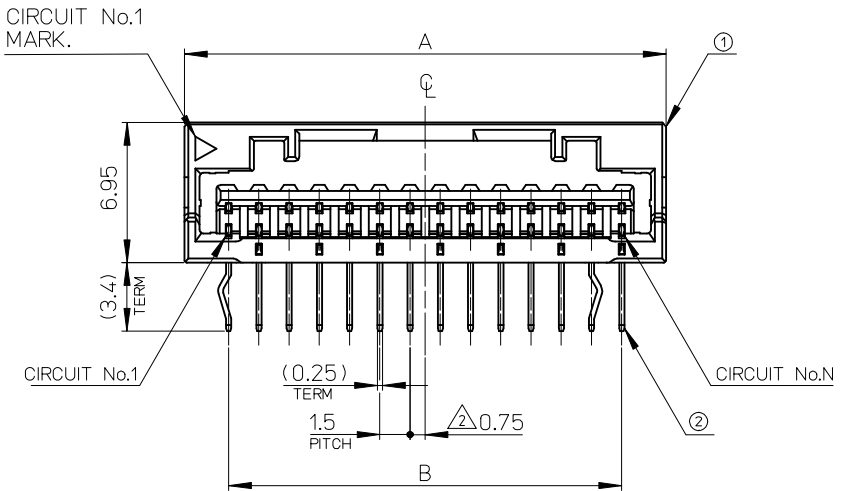
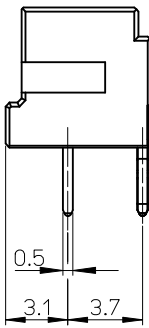


7.25

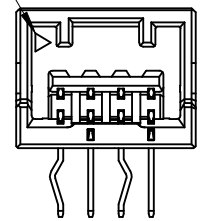


基板取付穴推奨寸法(マウント面)
RECOMMENDED P.C.BOARD
HOLE DIMENSION
(MOUNTING SIDE)
(t=1.6)



| No. | 部品 PART | 材料 MATERIAL |
|-----|-------------------|---|
| ① | ハウジング HOUSING | ポリアミド(PA) UL94V-0 POLYAMIDE UL94V-0 色: 注記 5. 参照 COLOR: SEE NOTES 5. |
| ② | ターミナル TERMINAL | 銅合金 COPPER ALLOY テール部: 錫めっき TAIL AREA: TIN PLATING 下地: ニッケルめっき(1.0μm以上) UNDER PLATING: NICKEL (1.0 MICROMETER MINIMUM) |

CIRCUIT No.1
MARK.



2~11極 CIRCUIT NO.1
CIRCUIT No.1 OF 2-11 CIRCUIT

| | | | | |
|------|------|------|---------------------------|---------|
| 26.8 | 21 | 25.4 | 503175-151* | 15 |
| 25.3 | 19.5 | 23.9 | 503175-141* | 14 |
| 23.8 | 18 | 22.4 | 503175-131* | 13 |
| 22.3 | 16.5 | 20.9 | 503175-121* | 12 |
| 20.8 | 15 | 19.4 | 503175-111* | 11 |
| 19.3 | 13.5 | 17.9 | 503175-101* | 10 |
| 17.8 | 12 | 16.4 | 503175-091* | 9 |
| 16.3 | 10.5 | 14.9 | 503175-081* | 8 |
| 14.8 | 9 | 13.4 | 503175-071* | 7 |
| 13.3 | 7.5 | 11.9 | 503175-061* | 6 |
| 11.8 | 6 | 10.4 | 503175-051* | 5 |
| 10.3 | 4.5 | 8.9 | 503175-041* | 4 |
| 8.8 | 3 | 7.4 | 503175-031* | 3 |
| 7.3 | 1.5 | 5.9 | 503175-021* | 2 |
| C | B | A | TRAY PACKAGE ORDER No. | CIRCUIT |

| | | | | | | | | | | |
|--|--------------------|--|-------|----------------------------|--------------------|--|------------------------|------------------------|--|--|
| REVISED EC NO.: J2009-2905 DRWN: TODA 2009/06/25 CHKD: SMARUYAMA 2009/06/25 APPR: SICHIKAWA 2009/06/26 | DESCRIPTION REV | GENERAL TOLERANCES (UNLESS SPECIFIED) | | DIMENSION STYLE MM ONLY | | SCALE 4:1 | DESIGN UNITS METRIC | THIRD ANGLE PROJECTION | | |
| | | 10 UNDER | ±0.2 | DRAWN BY NNISHI | DATE 2008/09/03 | TITLE 1.5 W/B SINGLE DIP R/A RECESSY 2-15CKT WITHOUT BOSS | | | | |
| | | 10 OVER 30 UNDER | ±0.25 | CHECKED BY SMARUYAMA | DATE 2008/09/03 | MOLEX INCORPORATED | | | | |
| | | 30 OVER | ±0.3 | APPROVED BY SICHIKAWA | DATE 2008/09/03 | | | | | |
| ANGULAR ±3 ° | | DRAFT WHERE APPLICABLE MUST REMAIN WITHIN DIMENSIONS | | MATERIAL NO. SEE TABLE | | DOCUMENT NO. SD-503175-002 | SHEET NO. 1 OF 2 | | | |

△ COLOR VARIATION&ORDER No.

| VIOLET | ORANGE | BROWN | GREEN | PINK | BLUE | YELLOW | RED | BLACK | BEIGE | |
|---------------------------|---------------------------|---------------------------|---------------------------|---------------------------|---------------------------|---------------------------|---------------------------|---------------------------|---------------------------|---------|
| 503175-1519 | 503175-1518 | 503175-1517 | 503175-1516 | 503175-1515 | 503175-1514 | 503175-1513 | 503175-1512 | 503175-1511 | 503175-1510 | 15 |
| 503175-1419 | 503175-1418 | 503175-1417 | 503175-1416 | 503175-1415 | 503175-1414 | 503175-1413 | 503175-1412 | 503175-1411 | 503175-1410 | 14 |
| 503175-1319 | 503175-1318 | 503175-1317 | 503175-1316 | 503175-1315 | 503175-1314 | 503175-1313 | 503175-1312 | 503175-1311 | 503175-1310 | 13 |
| 503175-1219 | 503175-1218 | 503175-1217 | 503175-1216 | 503175-1215 | 503175-1214 | 503175-1213 | 503175-1212 | 503175-1211 | 503175-1210 | 12 |
| 503175-1119 | 503175-1118 | 503175-1117 | 503175-1116 | 503175-1115 | 503175-1114 | 503175-1113 | 503175-1112 | 503175-1111 | 503175-1110 | 11 |
| 503175-1019 | 503175-1018 | 503175-1017 | 503175-1016 | 503175-1015 | 503175-1014 | 503175-1013 | 503175-1012 | 503175-1011 | 503175-1010 | 10 |
| 503175-0919 | 503175-0918 | 503175-0917 | 503175-0916 | 503175-0915 | 503175-0914 | 503175-0913 | 503175-0912 | 503175-0911 | 503175-0910 | 9 |
| 503175-0819 | 503175-0818 | 503175-0817 | 503175-0816 | 503175-0815 | 503175-0814 | 503175-0813 | 503175-0812 | 503175-0811 | 503175-0810 | 8 |
| 503175-0719 | 503175-0718 | 503175-0717 | 503175-0716 | 503175-0715 | 503175-0714 | 503175-0713 | 503175-0712 | 503175-0711 | 503175-0710 | 7 |
| 503175-0619 | 503175-0618 | 503175-0617 | 503175-0616 | 503175-0615 | 503175-0614 | 503175-0613 | 503175-0612 | 503175-0611 | 503175-0610 | 6 |
| 503175-0519 | 503175-0518 | 503175-0517 | 503175-0516 | 503175-0515 | 503175-0514 | 503175-0513 | 503175-0512 | 503175-0511 | 503175-0510 | 5 |
| 503175-0419 | 503175-0418 | 503175-0417 | 503175-0416 | 503175-0415 | 503175-0414 | 503175-0413 | 503175-0412 | 503175-0411 | 503175-0410 | 4 |
| 503175-0319 | 503175-0318 | 503175-0317 | 503175-0316 | 503175-0315 | 503175-0314 | 503175-0313 | 503175-0312 | 503175-0311 | 503175-0310 | 3 |
| 503175-0219 | 503175-0218 | 503175-0217 | 503175-0216 | 503175-0215 | 503175-0214 | 503175-0213 | 503175-0212 | 503175-0211 | 503175-0210 | 2 |
| TRAY PACKAGE ORDER NO. | TRAY PACKAGE ORDER NO. | TRAY PACKAGE ORDER NO. | TRAY PACKAGE ORDER NO. | TRAY PACKAGE ORDER NO. | TRAY PACKAGE ORDER NO. | TRAY PACKAGE ORDER NO. | TRAY PACKAGE ORDER NO. | TRAY PACKAGE ORDER NO. | TRAY PACKAGE ORDER NO. | CIRCUIT |

NOTES

1. 嵌合相手：502578シリーズ
MATE WITH：502578 SERIES.
2. 極数=偶数に適用
APPLY FOR CIRCUIT SIZE/2=EVEN.
3. 端子テール部に錫めっきを使用している為、外観に摺動痕が付く場合があります。
THE WOUND OF FRICTION MIGHT ADHERE TO EXTERNALS BECAUSE THE TIN PLATING IS USED FOR THE TAIL.

4. 製品番号
MATERIAL No.

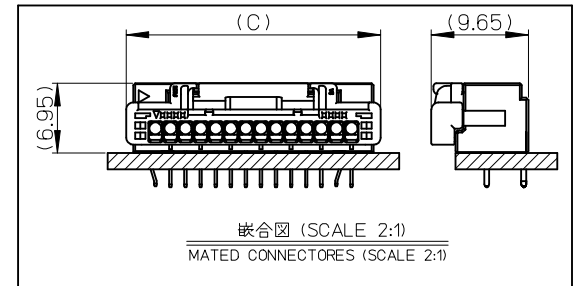
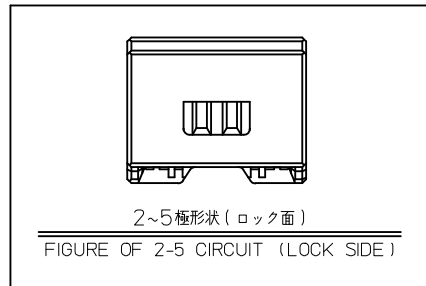
503175- $\times \times 1 \times$



ボス無し WITHOUT BOSS.

| CIRCUIT | WITHOUT BOSS No. | COLOR No. | COLOR |
|---------|------------------|-----------|------------|
| 02~15 | 1 | 0 | ベージュ BEIGE |
| | | 1 | 黒 BLACK |
| | | 2 | 赤 RED |
| | | 3 | 黄 YELLOW |
| | | 4 | 青 BLUE |
| | | 5 | 桃 PINK |
| | | 6 | 緑 GREEN |
| | | 7 | 茶 BROWN |
| | | 8 | 橙 ORANGE |
| 9 | 紫 VIOLET | | |

5. 本製品のプラスチック部に黒点・白点等が確認される場合や色合いが異なる場合がありますが、製品性能に影響はありません。
THERE IS NO INFLUENCE IN THE PRODUCT PERFORMANCE THOUGH THE BLACK AND WHITE SPOT ETC. MIGHT BE CONFIRMED TO THE PLASTIC PART OF THIS PRODUCT AND THE SHADE MIGHT BE DIFFERENT.
6. ELV及びRoHS適合品
ELV AND RoHS COMPLIANT
7. ボス有形状は“SD-503159-001”を参照願います。
REFER TO “SD-503159-001” FOR WITH BOSS.



| | | | | | | | |
|---|---------------------------------------|--------------|----------------------------|--------------------|---|------------------------|------------------------|
| REVISED EC NO. J2009-2905 DRWN: TODA 2009/06/25 CHKD: SMARUYAMA 2009/06/25 APPR: SICHIKAWA 2009/06/26 | GENERAL TOLERANCES (UNLESS SPECIFIED) | | DIMENSION STYLE MM ONLY | | SCALE --- | DESIGN UNITS METRIC | THIRD ANGLE PROJECTION |
| | 10 UNDER | ±0.2 | DRAWN BY NNISHI | DATE 2008/09/03 | TITLE 1.5 W/B SINGLE DIP R/A REC.ASSY 2-15CKT WITHOUT BOSS | | |
| | 10 OVER 30 UNDER | ±0.25 | CHECKED BY SMARUYAMA | DATE 2008/09/03 | | | |
| | 30 OVER | ±0.3 | APPROVED BY SICHIKAWA | DATE 2008/09/03 | MOLEX INCORPORATED | | |
| ANGULAR ±3° | | MATERIAL NO. | | DOCUMENT NO. | | | |
| DRAFT WHERE APPLICABLE MUST REMAIN WITHIN DIMENSIONS | | SEE TABLE | | SD-503175-002 | | | 2 OF 2 |
| THIS DRAWING CONTAINS INFORMATION THAT IS PROPRIETARY TO MOLEX INCORPORATED AND SHOULD NOT BE USED WITHOUT WRITTEN PERMISSION | | | | | | | |