


NEW KAPTON TAPE EC NO: S2009-0322 DRWN:KHLIM CHKD:CGOH APPR:BOKOK 2008/12/04 2008/12/04 2008/12/05		DESCRIPTION	QUALITY SYMBOLS ▽=0 ◻=0	GENERAL TOLERANCES (UNLESS SPECIFIED)		DIMENSION STYLE MM ONLY		SCALE NTS	DESIGN UNITS METRIC	 THIRD ANGLE PROJECTION	
						mm	INCH	DRAWN BY KHLIM	DATE 2005/03/07		TITLE SERIAL ATA BACKPLANE SIL WITH 1.05 PEGS STD HEIGHT, RECEPT., SMT
						3 PLACES ± --- ± ---	CHECKED BY KCLING	DATE 2005/04/14			
						2 PLACES ± 0.20 ± ---	APPROVED BY SKTOH	DATE 2005/04/14			
B3		REV		ANGULAR ± 3 °		MATERIAL NO.		DOCUMENT NO.		SHEET NO.	
				DRAFT WHERE APPLICABLE MUST REMAIN WITHIN DIMENSIONS		SEE TABLE		SD-87713-029		2 OF 5	
						THIS DRAWING CONTAINS INFORMATION THAT IS PROPRIETARY TO MOLEX INCORPORATED AND SHOULD NOT BE USED WITHOUT WRITTEN PERMISSION					

10 9 8 7 6 5 4 3 2 1

F

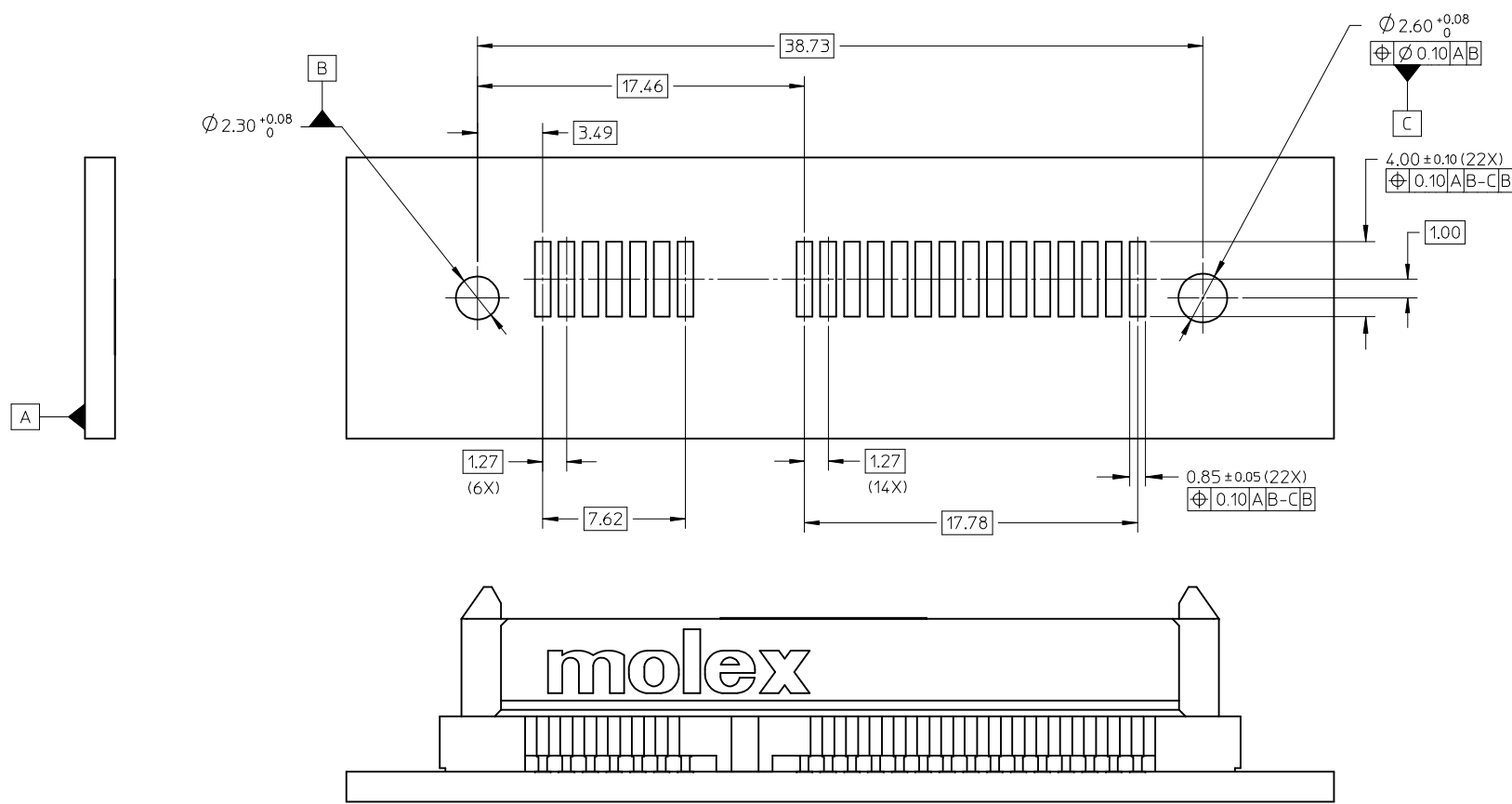
E

D

C

B

A



PCB THICKNESS: 1.60±0.10 mm
RECOMMENDED PCB LAYOUT

NEW KAPTON TAPE EC NO: S2009-0322 DRWN:KHLIM CHKD:CGOH APPR:BOKOK		2008/12/04 2008/12/04 2008/12/05	DESCRIPTION REV	QUALITY SYMBOLS <div>▽=0</div> <div>▽=0</div>	GENERAL TOLERANCES (UNLESS SPECIFIED)			DIMENSION STYLE MM ONLY		SCALE NTS	DESIGN UNITS METRIC	THIRD ANGLE PROJECTION		
						mm	INCH	DRAWN BY KHLIM	DATE 2005/03/07	TITLE SERIAL ATA BACKPLANE SIL WITH 1.05 PEGS STD HEIGHT, RECEPT., SMT				
					4 PLACES	± ---	± ---	CHECKED BY KCLING	DATE 2005/04/14					
					3 PLACES	± ---	± ---	APPROVED BY SKTOH	DATE 2005/04/14	MOLEX INCORPORATED				
2 PLACES	± 0.20	± ---	MATERIAL NO.		DOCUMENT NO.	SHEET NO.								
B3	REV				ANGULAR ± 3 °			SEE TABLE		SD-87713-029		3 OF 5		
					DRAFT WHERE APPLICABLE MUST REMAIN WITHIN DIMENSIONS			SIZE A3		THIS DRAWING CONTAINS INFORMATION THAT IS PROPRIETARY TO MOLEX INCORPORATED AND SHOULD NOT BE USED WITHOUT WRITTEN PERMISSION				

10 9 8 7 6 5 4 3 2 1

F

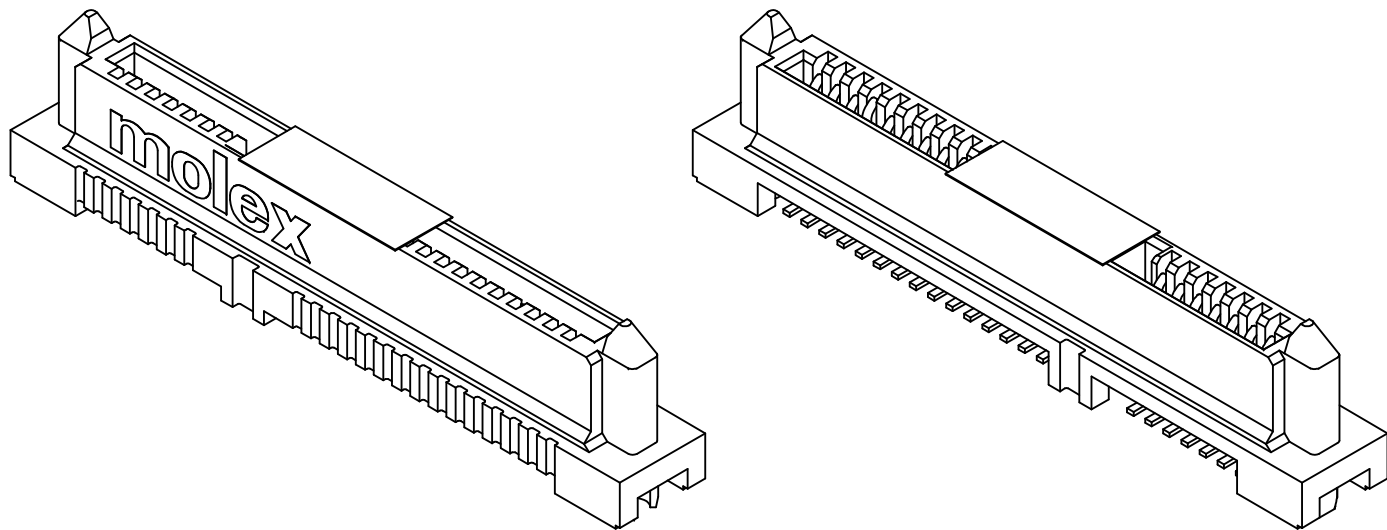
E

D

C

B

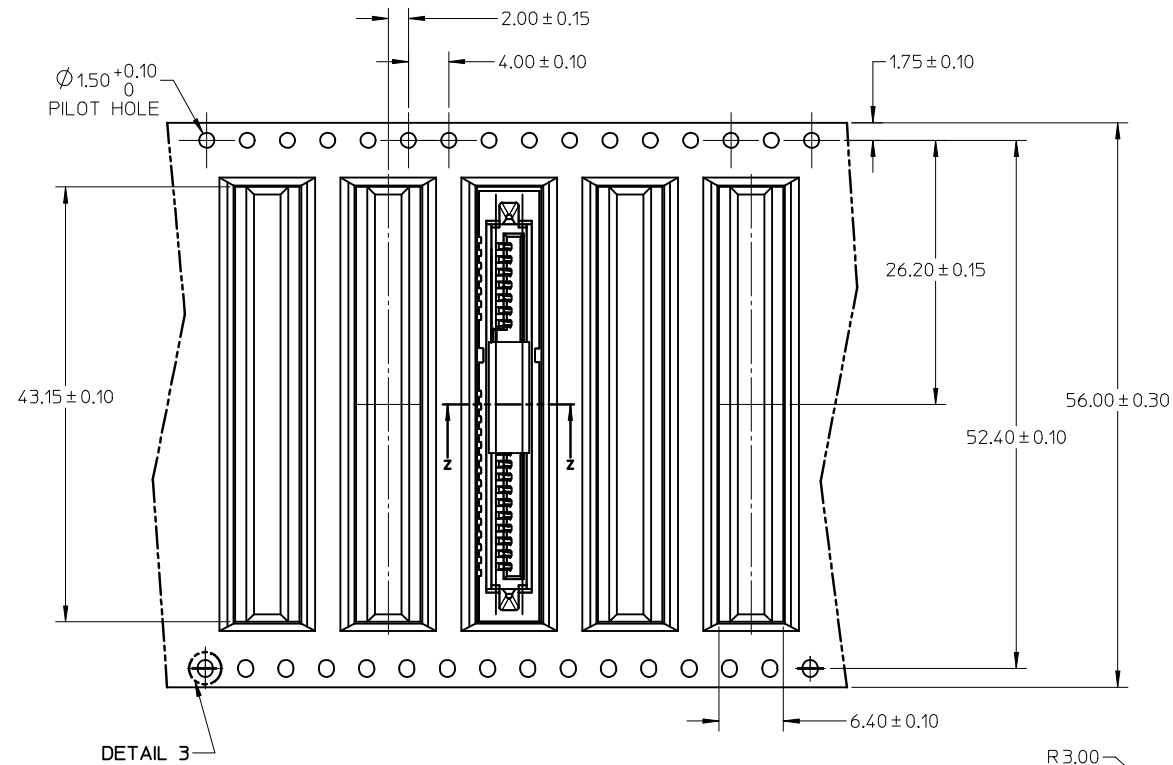
A



NEW KAPTON TAPE EC NO: S2009-0322 2008/12/04 DRWN:KHLIM CHKD:CGOH 2008/12/04 APPR:BOKOK 2008/12/05				DESCRIPTION REV	QUALITY SYMBOLS ▽=0 ▽=0	GENERAL TOLERANCES (UNLESS SPECIFIED)		DIMENSION STYLE MM ONLY		SCALE NTS	DESIGN UNITS METRIC	THIRD ANGLE PROJECTION	
		mm	INCH			DRAWN BY KHLIM		DATE 2005/03/07	TITLE SERIAL ATA BACKPLANE SIL WITH 1.05 PEGS STD HEIGHT, RECEPT., SMT MOLEX INCORPORATED				
4 PLACES		± ---	± ---			CHECKED BY KCLING		DATE 2005/04/14					
3 PLACES		± ---	± ---			APPROVED BY SKTOH		DATE 2005/04/14					
2 PLACES		± 0.20	± ---										
1 PLACE		± ---	± ---	ANGULAR ± 3 °		MATERIAL NO.		DOCUMENT NO.		SHEET NO.			
		DRAFT WHERE APPLICABLE MUST REMAIN WITHIN DIMENSIONS		SEE TABLE		SD-87713-029		4 OF 5					
B3		THIS DRAWING CONTAINS INFORMATION THAT IS PROPRIETARY TO MOLEX INCORPORATED AND SHOULD NOT BE USED WITHOUT WRITTEN PERMISSION											

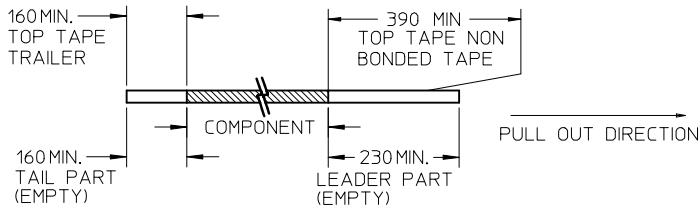
9 8 7 6 5 4 3 2 1

TAPE AND REEL PACKAGING

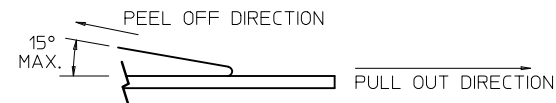


NOTES:

1. LEADER AND TRAILER TAPE



2. PEELING OFF FORCE OF THE TOP TAPE: 80gf MAX. (PEELING DIRECTION AS SHOWN IN FOLLOWING FIGURE)



- TAPE AND REEL SPECIFICATION IS AS PER EIA-481.
- TAPE AND REEL QUANTITY : 400 PCS/ REEL.
- THE TAPE IS TREATED FOR ANTI-STATIC.

NEW KAPTON TAPE			QUALITY SYMBOLS		GENERAL TOLERANCES (UNLESS SPECIFIED)		DIMENSION STYLE MM ONLY		SCALE NTS	DESIGN UNITS METRIC	THIRD ANGLE PROJECTION	
EC NO: S2009-0322			▽=0		mm INCH		DRAWN BY DATE		TITLE SERIAL ATA BACKPLANE SIL WITH 1.05 PEGS STD HEIGHT, RECEPT., SMT			
2008/12/04			◇=0		4 PLACES ± --- ± ---		KHLIM 2005/03/07					
DRWN:KHLIM					3 PLACES ± --- ± ---		CHECKED BY DATE					
2008/12/04					2 PLACES ± 0.20 ± ---		KCLING 2005/04/14		MOLEX MOLEX INCORPORATED			
CHKD:CGOH					1 PLACE ± --- ± ---		APPROVED BY DATE					
2008/12/05					ANGULAR ± 3 °		SKTOH 2005/04/14		DOCUMENT NO. SD-87713-029 SHEET NO. 5 OF 5			
APPR:BOKOK					DRAFT WHERE APPLICABLE MUST REMAIN WITHIN DIMENSIONS		MATERIAL NO. SEE TABLE					
B3			REV				SIZE A3		THIS DRAWING CONTAINS INFORMATION THAT IS PROPRIETARY TO MOLEX INCORPORATED AND SHOULD NOT BE USED WITHOUT WRITTEN PERMISSION			

English 日本語 한국어 简体中文

Search:

Go

[Register](#) | [Login](#)
[My Parts](#) (0 items)

Product Name	Cross-Ref	Catalog	Literature	Industries	Standards	Contact Us	About Us	Investors	Careers
Connectors	Sockets	I/O Connectors		Cable Assemblies	Fiber Optics	Printed Circuit Products	Industrial Products	Lighting Products	

[Home](#) [PCB Receptacles](#) [Datasheet](#)

Switch Language

English ☐

Need Assistance?

[Contact Us](#)
[Find a Distributor](#)
[Order Samples](#)
[Tech Library](#)
[EcoCare](#)
[Electrical Models](#)[Printer-friendly page](#)[Email this page](#)Part Number: **0877131006**Status: **Active** Overview: [Serial ATA 1.27" Host Receptacles](#)**Description:** 1.27mm (.050") Pitch Serial ATA Host Receptacle, Surface Mount, Vertical, Standard Height, with 1.05mm (.041") Plastic Locating Peg, 0.76µm (30µ") Gold (Au) Selective Plating, with Kapton Tape, Tape on Reel Packaging, 22 Circuits, Leadfree[Documents: Note - Please disable browser pop-up blockers for documents on www.molex.com](#)
[Drawing \(PDF\)](#) [Product Specification PS-87713-016 \(PDF\)](#)
[3D Model](#) [RoHS Certificate of Compliance \(PDF\)](#)

Order Products:

[Check Distributor Inventory](#)[Add to My Parts](#)[Request Samples](#)Part Detail: [\(show all\)](#)[General](#) [Physical](#) [Electrical](#) [Solder Process Data](#) [Material Info](#) [Reference - Drawing Numbers](#)**General**

Product Family	PCB Receptacles
Series	87713
Application	Board-to-Board
Comments	1.05mm (.041") Plastic Locating Peg
Overview	Serial ATA 1.27" Host Receptacles
Product Name	Serial ATA

Physical

Circuits (Loaded)	22
Circuits Detail	Power 15 pins, Signal 7 pins
Durability (mating cycles max)	500
Glow-Wire Compliant	No
Lock to Mating Part	Yes
Material - Metal	Copper Alloy
Material - Plating Mating	Gold
Material - Plating Termination	Tin
Material - Resin	High Temperature Thermoplastic
Number of Rows	1
Orientation	Vertical
PCB Locator	Yes
PCB Retention	None
Packaging Type	Tray
Pitch - Mating Interface (in)	0.050 In
Pitch - Mating Interface (mm)	1.27 mm
Plating min: Mating (µin)	30
Plating min: Mating (µm)	0.76
Plating min: Termination (µin)	100
Plating min: Termination (µm)	2.54
Polarized to Mating Part	Yes
Polarized to PCB	Yes
Surface Mount Compatible (SMC)	N/A
Temperature Range - Operating	-40°C to +105°C
Termination Interface: Style	Surface Mount

Electrical (Please review the Product Specification for specific details.)

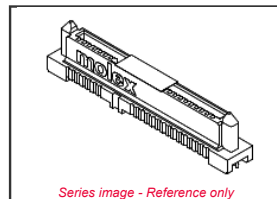
Current - Maximum per Contact	1.5A
Voltage - Maximum	30V

Solder Process Data

Duration at Max. Process Temperature (seconds)	10
Lead-free Process Capability	Reflow Capable (SMT only)
Max. Cycles at Max. Process Temperature	1
Process Temperature max. C	260

Material Info**Reference - Drawing Numbers**

Product Specification	PS-87713-016
Sales Drawing	SD-87713-029



Series image - Reference only

EU RoHS
ELV and RoHS
Compliant**China RoHS****REACH SVHC**
Not Reviewed**Halogen-Free Status**
Halogen-Free**Need more information on product environmental compliance?**Email productcompliance@molex.comFor a multiple part number RoHS Certificate of Compliance, [click here](#)Please visit the [Contact Us](#) section for any non-product compliance questions.**Search Parts in this Series**[87713Series](#)**Mates With**[87679](#), [87799](#), [87703](#)[Feedback](#) [Privacy](#) [Legal](#) [Site Map](#) [Help](#)

Find us on:



Copyright 2005-2010