

NOTES :

- 1) MATERIALS :
HOUSING : NYLON, GLASS-FILLED, UL94V-0, COLOR - SEE CHART
TERMINALS : PHOSPHOR BRONZE, .012/(0.30)
FITTING NAILS : BRASS ALLOY, .010/(0.25)
- 2) FINISH :
TERMINAL PLATING OPTIONS : (SEE TABLE)
(A) SELECT GOLD IN CONTACT AREA: .000050/(0.00127) MIN.,
*SELECT MATTE TIN IN PC TAIL AREA: .000100/(0.00254) MIN.,
WITH OVERALL NICKEL UNDERPLATE: .000050/(0.00127) MIN.
(B) SELECT GOLD IN CONTACT AREA: .000030/(0.00076) MIN.,
*SELECT MATTE TIN IN PC TAIL AREA: .000100/(0.00254) MIN.,
WITH OVERALL NICKEL UNDERPLATE: .000050/(0.00127) MIN.
(C) SELECT GOLD IN CONTACT AREA: .000015/(0.00038) MIN.,
*SELECT MATTE TIN IN PC TAIL AREA: .000100/(0.00254) MIN.,
WITH OVERALL NICKEL UNDERPLATE: .000050/(0.00127) MIN.
- FITTING NAILS :
*100 MICROINCHES MATTE TIN OVER 50 MICROINCHES NICKEL UNDERPLATE
*THE PRIMARY SHIPPING CARTON WILL BE LABELED "ELV AND RoHS COMPLIANT". CARTONS WITHOUT THIS LABEL MAY CONTAIN PRODUCT WITH TIN-LEAD IN THE PC TAIL AREA.
- 3) PRODUCT SPECIFICATION : PS-43743-001
- 4) COPLANARITY SPECIFICATIONS:
WITH THE MODULAR JACK SITTING ON A LEVEL SURFACE, THE MAXIMUM GAP BETWEEN THE LEVEL SURFACE AND ALL TERMINAL TAILS AND BOTH FITTING NAILS IS .006/(0.15).
- 5) FOR ASSEMBLIES HAVING VOIDED CIRCUITS, THE TAIL PORTION IS CUT AND REMOVED. THE MATING PORTION OF THE TERMINAL REMAINS INTACT. VOIDED CIRCUITS MUST BE THE SAME FOR BOTH PORTS.
- 6) CONVECTION SOLDERING TECHNOLOGY SHOULD BE USED WHEN GANGING MODULAR JACKS WITH INBOARD NAILS SIDE-BY-SIDE.
- 7) THIS PART CONFORMS TO CLASS B REQUIREMENTS OF COSMETIC SPECIFICATION PS-45499-002.

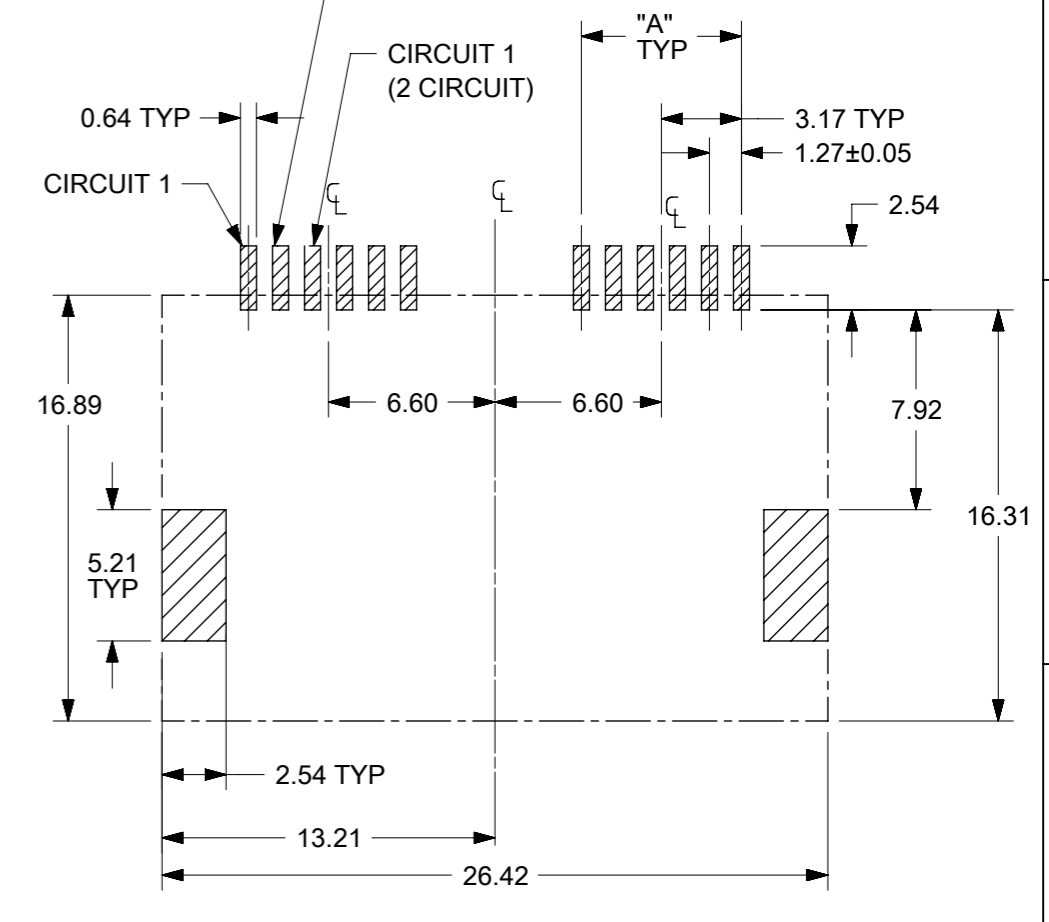
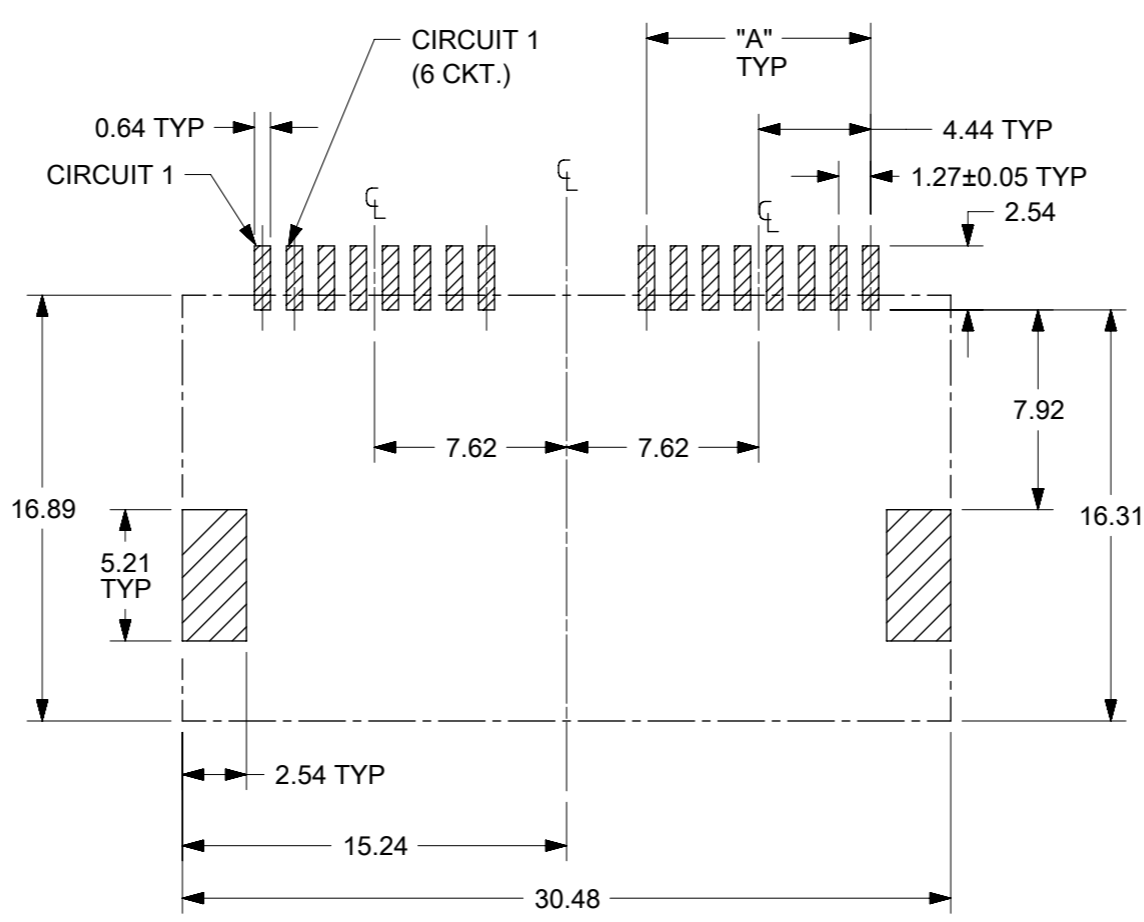
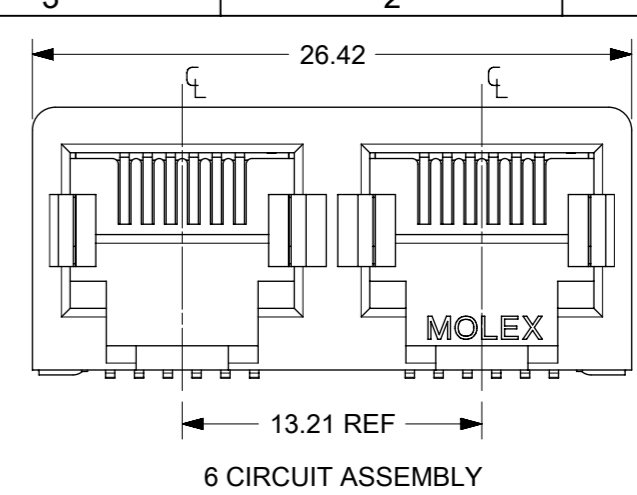
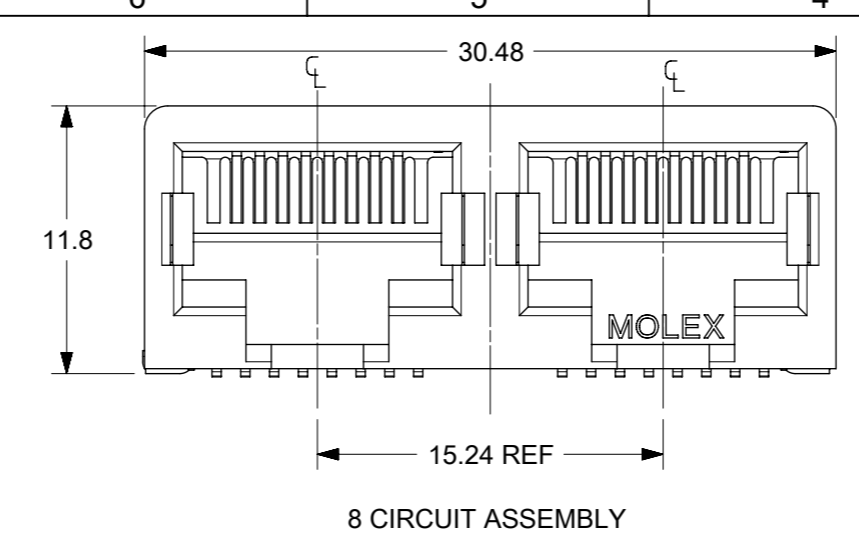
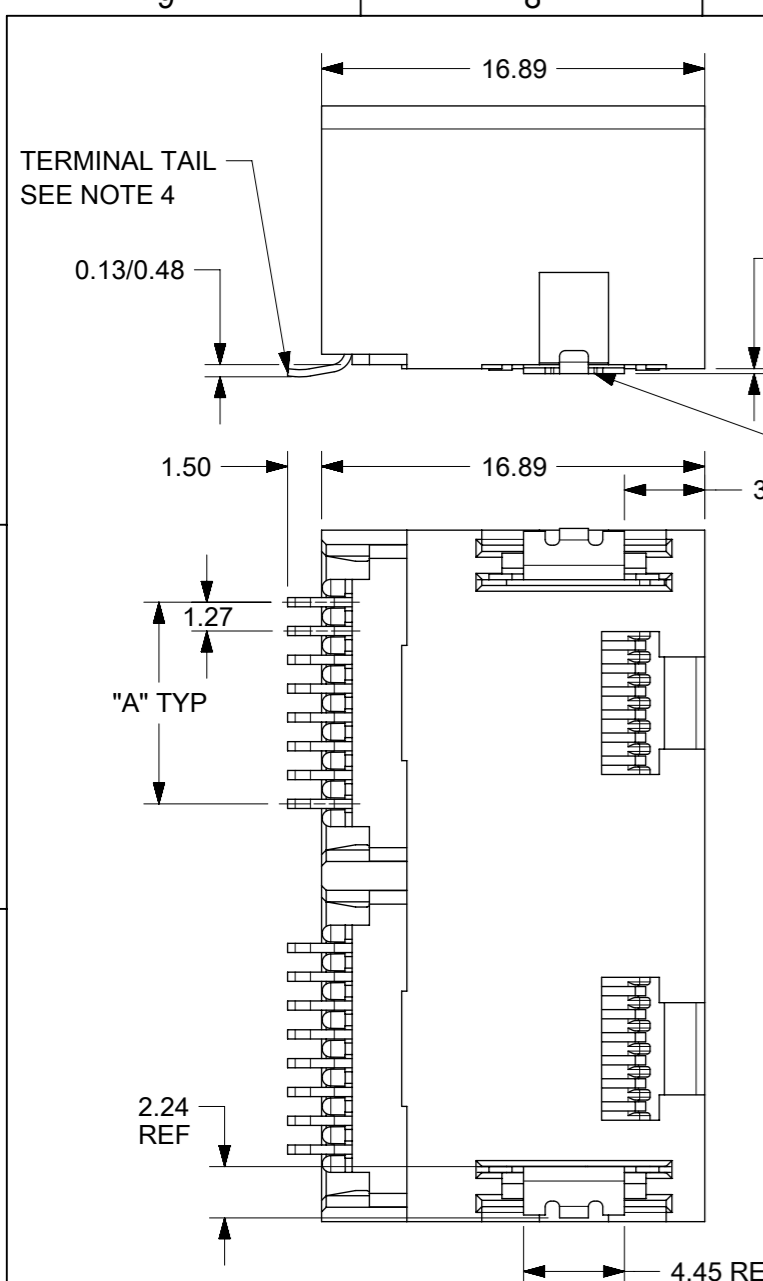
PC BOARD LAYOUT FOR 8 POSITION HOUSING
(COMPONENT SIDE OF BOARD)

PC BOARD LAYOUT FOR 6 POSITION HOUSING
(COMPONENT SIDE OF BOARD)

REVISED NOTES EC NO: UCP2009-1244 DRAWN: KLOSTNER 2008/12/10 CHKD: JEBEL 2008/12/10 APPR: FBMITH 2008/12/10	QUALITY SYMBOLS ▽=0 ▽=0	GENERAL TOLERANCES (UNLESS SPECIFIED)		DIMENSION STYLE IN/MM	SCALE 1:1	DESIGN UNITS INCH	THIRD ANGLE PROJECTION		
		4 PLACES ± --- ± --- 3 PLACES ± --- ± .010 2 PLACES ± .025 ± .015 1 PLACE ± 0.38 ± ---	mm INCH	DRAWN BY MUELLER	DATE 98/06/11	TITLE 4, 6, & 8 CIRCUIT DUAL PORT SMT MODULAR JACK W/ FLUSH MOUNT NAILS			
		ANGULAR ±1/2°		CHECKED BY ROBERTS	DATE 98/06/16	MOLEX INCORPORATED			
		DRAFT WHERE APPLICABLE MUST REMAIN WITHIN DIMENSIONS		APPROVED BY EDGLEY	DATE 98/06/17	MATERIAL NO. SEE SHT 2	DOCUMENT NO. SD-44193-001	SHEET NO. 1 OF 2	

THIS DRAWING CONTAINS INFORMATION THAT IS PROPRIETARY TO MOLEX INCORPORATED AND SHOULD NOT BE USED WITHOUT WRITTEN PERMISSION

2 | G1
1 | G2
SHREV



PC BOARD LAYOUT FOR 8 POSITION HOUSING
(COMPONENT SIDE OF BOARD)

PC BOARD LAYOUT FOR 6 POSITION HOUSING
(COMPONENT SIDE OF BOARD)

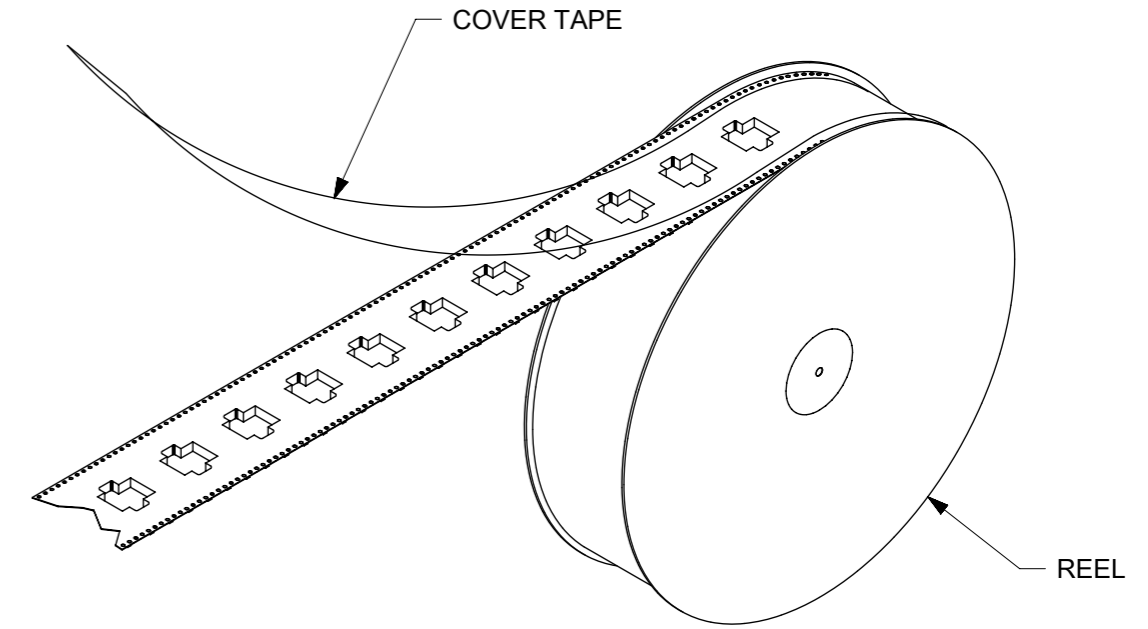
- NOTES :
- MATERIALS :**
HOUSING : NYLON, GLASS-FILLED, UL94V-0, COLOR - SEE CHART
TERMINALS : PHOSPHOR BRONZE, 0.30 mm THICKNESS.
FITTING NAILS : BRASS ALLOY, 0.25 mm THICKNESS.
 - FINISH :**
TERMINAL PLATING OPTIONS : (SEE TABLE)
(A) SELECT GOLD IN CONTACT AREA: 0.00127 mm MIN.,
*SELECT MATTE TIN IN PC TAIL AREA: 0.00254 mm MIN.,
WITH OVERALL NICKEL UNDERPLATE: 0.00127 mm MIN.
(B) SELECT GOLD IN CONTACT AREA: 0.00076 mm MIN.,
*SELECT MATTE TIN IN PC TAIL AREA: 0.00254 mm MIN.,
WITH OVERALL NICKEL UNDERPLATE: 0.00127 mm MIN.
(C) SELECT GOLD IN CONTACT AREA: 0.00038 mm MIN.,
*SELECT MATTE TIN IN PC TAIL AREA: 0.00254 mm MIN.,
WITH OVERALL NICKEL UNDERPLATE: 0.00127 mm MIN.
 - FITTING NAILS :**
*2.54 MICROMETER MATTE TIN OVER 1.27 MICROMETER NICKEL UNDERPLATE
*THE PRIMARY SHIPPING CARTON WILL BE LABELED "ELV AND RoHS COMPLIANT". CARTONS WITHOUT THIS LABEL MAY CONTAIN PRODUCT WITH TIN-LEAD IN THE PC TAIL AREA.
 - PRODUCT SPECIFICATION :** PS-43743-0001
 - COPLANARITY SPECIFICATIONS :**
WITH THE MODULAR JACK SITTING ON A LEVEL SURFACE, THE MAXIMUM GAP BETWEEN THE LEVEL SURFACE AND ALL TERMINAL TAILS AND BOTH FITTING NAILS IS 0.15 mm.
 - FOR ASSEMBLIES HAVING VOIDED CIRCUITS, THE TAIL PORTION IS CUT AND REMOVED. THE MATING PORTION OF THE TERMINAL REMAINS INTACT. VOIDED CIRCUITS MUST BE THE SAME FOR BOTH PORTS.**
 - CONVECTION SOLDERING TECHNOLOGY SHOULD BE USED WHEN GANGING MODULAR JACKS WITH INBOARD NAILS SIDE-BY-SIDE.**
 - THIS PART CONFORMS TO CLASS B REQUIREMENTS OF COSMETIC SPECIFICATION PS-45499-002.**

DOCUMENT STATUS	P1	RELEASE DATE	2018/03/23	01:56:28
-----------------	----	--------------	------------	----------

SYMBOLS	THIS DRAWING CONTAINS INFORMATION THAT IS PROPRIETARY TO MOLEX ELECTRONIC TECHNOLOGIES, LLC AND SHOULD NOT BE USED WITHOUT WRITTEN PERMISSION		CURRENT REV DESC: MIGRATED TO NX	
	DIMENSION UNITS	SCALE		
▽ = 0	MM	3:1		
▽ = 0	GENERAL TOLERANCES (UNLESS SPECIFIED)			
▽ = 0	ANGULAR TOL ± 0.5°			
▽ = 0	4 PLACES	±	EC NO: 173578	2018/01/16
▽ = 0	3 PLACES	±	DRWN: VK10	2018/03/23
▽ = 0	2 PLACES	± 0.25	CHK'D: KLANG	2018/03/23
▽ = 0	1 PLACE	± 0.38	APPR: KLANG	
▽ = 0	0 PLACES	±	INITIAL REVISION:	
▽ = 0	DRAFT WHERE APPLICABLE MUST REMAIN WITHIN DIMENSIONS		DRWN: AFENG02	2016/09/27
	THIRD ANGLE PROJECTION		APPR: KLANG	2016/10/10
	DRAWING	SERIES	MATERIAL NUMBER	CUSTOMER
	A3-SIZE	44193	SEE CHART	GENERAL MARKET
			DOCUMENT NUMBER	DOC TYPE DOC PART REVISION
			SD-44193-001	PSD 002 G3
			SHEET NUMBER	
			1 OF 2	

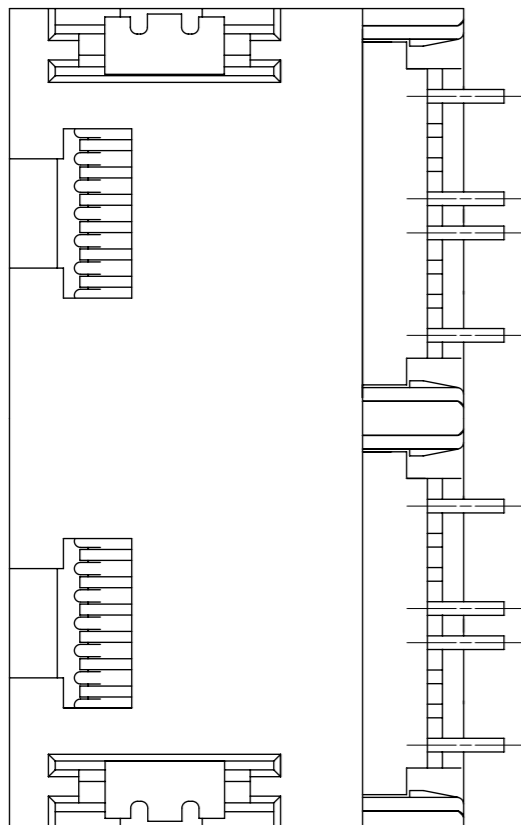
"X"=NOT TOOLED	ASSEMBLY ITEM NO.	CONNECTOR SIZE	CIRCUIT SIZE	TERMINAL PLATING	TAPE & REEL PACKAGING NO.	VOIDED CIRCUITS	HOUSING COLOR
X	44193-0001	8	4	A	PK-70873-7004	NA	BLACK
X	44193-0002	8	6	A	PK-70873-7004		
	44193-0003	8	8	A	PK-70873-7004		
	44193-0004	6	4	A	PK-70873-7003		
	44193-0005	6	6	A	PK-70873-7003		
X	44193-0006	8	4	B	PK-70873-7004		
X	44193-0007	8	6	B	PK-70873-7004		
X	44193-0008	8	8	B	PK-70873-7004		
X	44193-0009	6	4	B	PK-70873-7003		
X	44193-0010	6	6	B	PK-70873-7003		
X	44193-0011	8	4	C	PK-70873-7004		
X	44193-0012	8	6	C	PK-70873-7004		
X	44193-0013	8	8	C	PK-70873-7004		
X	44193-0014	6	4	C	PK-70873-7003		
X	44193-0015	6	6	C	PK-70873-7003		
X	44193-0016	6	2	A	PK-70873-7003		
X	44193-0017	6	2	B	PK-70873-7003		
X	44193-0018	6	2	C	PK-70873-7003		

HOUSING SIZE	CIRCUIT SIZE	DIM. A
6	6	6.35
6	4	3.81
6	2	1.27
8	8	8.89
8	6	6.35
8	4	3.81



VACUUM FORMED CARRIER TAPE WITH SPROCKET HOLES

TAPE AND REEL PACKAGING



TYPICAL VIEW SHOWING VOIDED CIRCUIT (CIRCUITS 2,3,6,7 SHOWN VOIDED)

SYMBOLS	THIS DRAWING CONTAINS INFORMATION THAT IS PROPRIETARY TO MOLEX ELECTRONIC TECHNOLOGIES, LLC AND SHOULD NOT BE USED WITHOUT WRITTEN PERMISSION		CURRENT REV DESC: MIGRATED TO NX		molex
	DIMENSION UNITS	SCALE			
▽ = 0	MM	3:1			2 PORT SMT. JACK ASSY W/FLUSH MOUNT NAILS
▽ = 0	GENERAL TOLERANCES (UNLESS SPECIFIED)				
▽ = 0	ANGULAR TOL ± 0.5°				PRODUCT CUSTOMER DRAWING
▽ = 0	4 PLACES	±	EC NO: 173578	2018/01/16	
▽ = 0	3 PLACES	±	DRWN: VK10	2018/03/23	
▽ = 0	2 PLACES	± 0.25	CHK'D: KLANG	2018/03/23	
▽ = 0	1 PLACE	± 0.38	APPR: KLANG		
▽ = 0	0 PLACES	±	INITIAL REVISION:		
□ = 0	DRAFT WHERE APPLICABLE MUST REMAIN WITHIN DIMENSIONS		DRWN: AFENG02	2016/09/27	DOCUMENT NUMBER
▽ = 0	THIRD ANGLE PROJECTION		APPR: KLANG	2016/10/10	DOC TYPE
	DRAWING		SERIES		DOC PART
	A3-SIZE		44193		REVISION
	MATERIAL NUMBER		CUSTOMER		
	SEE CHART		GENERAL MARKET		
	SHEET NUMBER		2 OF 2		