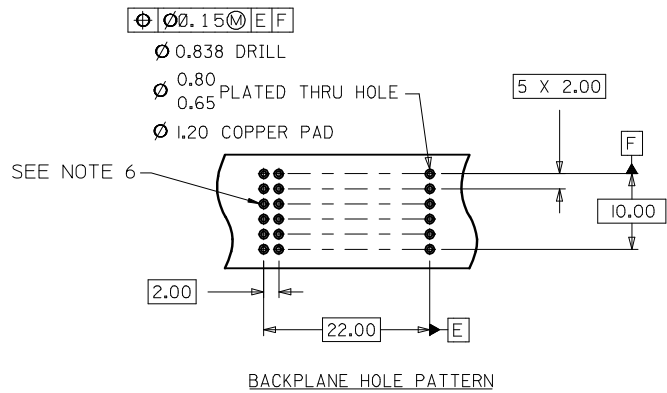
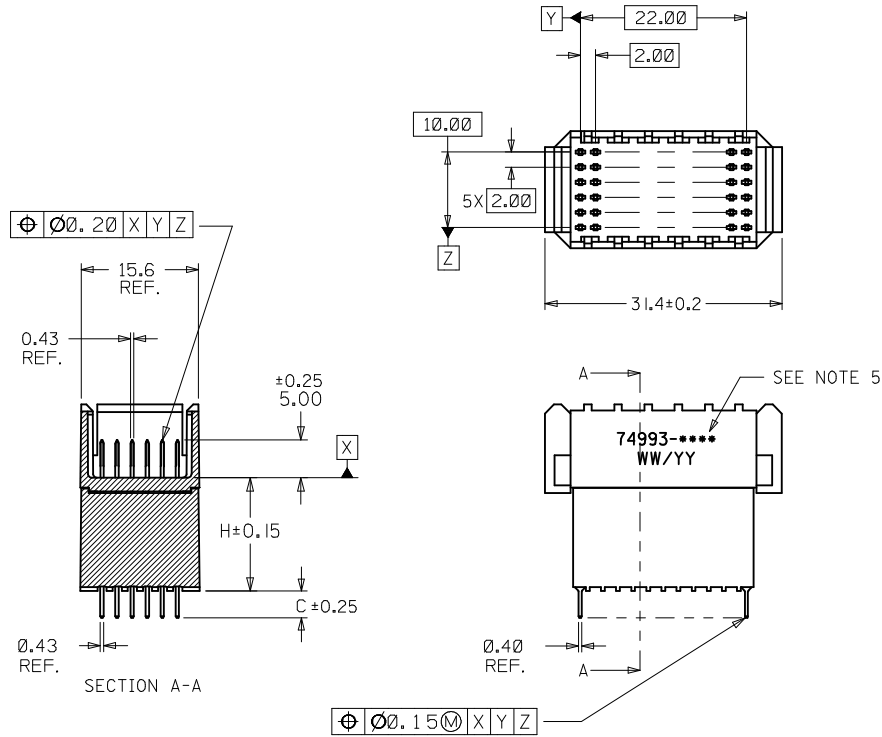


NOTES:

1. MATERIALS: HOUSING-LIQUID CRYSTAL POLYMER (LCP), GLASS-FILLED, UL-94V-0, COLOR: BLACK, TERMINAL - PHOSPHOR BRONZE.
2. FINISH: SELECTIVE GOLD (Au) IN CONTACT AREA, 0.76 MICROMETER MINIMUM THICKNESS; SELECTIVE TIN (Sn) ON PCB TAILS, 0.38 MICROMETER MINIMUM THICKNESS; NICKEL (Ni) UNDERPLATE OVERALL.
3. THIS PART CONFORMS TO MOLEX PRODUCT SPECIFICATION PS-73780-9999.
4. SEE TABLE ON SHEET 2 FOR PACKAGING SPECIFICATION.
5. PARTS MARKED WITH PART NUMBER AND DATE CODE ON EITHER SIDE, APPROXIMATELY WHERE SHOWN.
6. HOLE SIZE SPECIFICATION IS FOR TIN/LEAD PLATED HOLES ONLY. FOR OTHER PLATING TYPES SEE MOLEX APPLICATION AS-73670-9996.
7. PART CONFORMS TO MOLEX COSMETIC SPECIFICATION PS-45499-002 CLASS B.



CHG PKG FOR 15MM EC NO: UCP2013-0087 DRW:DMORGAN 2012/08/28 CHKD:BBARKER 2012/08/28 APPR:SMILLER 2012/09/18	DESCRIPTION	QUALITY SYMBOLS	GENERAL TOLERANCES (UNLESS SPECIFIED)		DIMENSION STYLE	SCALE	DESIGN UNITS	THIRD ANGLE PROJECTION
		▽=0	mm	INCH	MM ONLY	2:1	METRIC	☉
REV	DESCRIPTION	▽=0	4 PLACES ±	±	DRAWN BY	DATE	TITLE	
		▽=0	3 PLACES ±	±	MIBARRA	2005/07/01	SALES ASSY HDM BACKPLANE STACKING MOD. LEAD FREE DOUBLE END WALL OPTION	
REV	DESCRIPTION	▽=0	2 PLACES ±	±	CHECKED BY	DATE	molex	
		▽=0	1 PLACE ±	±	BSMART	2005/07/01	SD-74993-002	
REV	DESCRIPTION	▽=0	0 PLACE ±	±	APPROVED BY	DATE	DOCUMENT NO.	
		ANGULAR ±1/2°	DRAFT WHERE APPLICABLE MUST REMAIN WITHIN DIMENSIONS		SMILLER	2005/07/01	SD-74993-002	
SIZE			MATERIAL NO.		DOCUMENT NO.		SHEET NO.	
C			SEE SHEET 2		SD-74993-002		1 OF 2	
THIS DRAWING CONTAINS INFORMATION THAT IS PROPRIETARY TO MOLEX INCORPORATED AND SHOULD NOT BE USED WITHOUT WRITTEN PERMISSION								

MATERIAL NUMBER ASSIGNMENT

74993-* * 09

NUMBER	CIRCUIT SIZE	DIM "C"	TAIL STYLE
0	72	2.0	SOLDER
1	72	2.5	SOLDER
2	72	3.0	SOLDER
3	72	3.5	SOLDER
4	72	3.5	PRESSFIT

NUMBER	DIM "H"	PACKAGING SPECIFICATION
0	6.05	PK-70873-0875
1	10.05	PK-70873-0871
2	15.05	PK-70873-1873

SEE SHEET 1 EC NO: UCP2013-0087 DRWING: MORGAN 2012/08/28 CHKD: BBARKER 2012/08/28 APPR: SMILLER 2012/09/18	DESCRIPTION REV	QUALITY SYMBOLS ▽=0 ▽=0 ▽=0	GENERAL TOLERANCES (UNLESS SPECIFIED)	DIMENSION STYLE MM ONLY	SCALE DESIGN UNITS METRIC	THIRD ANGLE PROJECTION	
		4 PLACES ± --- ± --- 3 PLACES ± --- ± --- 2 PLACES ± --- ± --- 1 PLACE ± --- ± --- 0 PLACE ± --- ± ---	DRAWN BY MIBARRA	DATE 2005/07/01	TITLE SALES ASSY HDM BACKPLANE STACKING MOD. LEAD FREE DOUBLE END WALL OPTION <div style="text-align: center; font-weight: bold; font-size: 1.2em;">molex</div>		
		ANGULAR ±1/2° DRAFT WHERE APPLICABLE MUST REMAIN WITHIN DIMENSIONS	CHECKED BY BSMART	DATE 2005/07/01			
			MATERIAL NO. SEE TABLE	DATE 2005/07/01	DOCUMENT NO. SD-74993-002	SHEET NO. 2 OF 2	

10 9 8 7 6 5 4 3 2 1

F
E
D
C
B
A

MATERIAL NUMBER ASSIGNMENT

74993-* * 0 9

NUMBER	CIRCUIT SIZE	DIM "C"	TAIL STYLE
0	72	2.0	SOLDER
1	72	2.5	SOLDER
2	72	3.0	SOLDER
3	72	3.5	SOLDER
4	72	3.5	PRESSFIT

NUMBER	DIM "H"
0	6.05
1	10.05
2	15.05

INITIAL RELEASE EC NO: UCP2005-2847 DRWN:MIBARRA 2005/07/25 CHKD:BSMART 2005/07/26 APPR:SMILLER 2005/07/27	DESCRIPTION A	REV	QUALITY SYMBOLS ▽=0 ▽=0	GENERAL TOLERANCES (UNLESS SPECIFIED) mm INCH 4 PLACES ± --- ± --- 3 PLACES ± --- ± --- 2 PLACES ± --- ± --- 1 PLACE ± --- ± --- ANGULAR ±1/2°	DIMENSION STYLE MM ONLY DRAWN BY DATE MIBARRA 05/07/01 CHECKED BY DATE BSMART 05/07/01 APPROVED BY DATE SMILLER 05/07/01	SCALE --- DESIGN UNITS METRIC THIRD ANGLE PROJECTION	TITLE SALES ASSY HDM BACKPLANE STACKING MODULE DOUBLE END OPTION
			DRAFT WHERE APPLICABLE MUST REMAIN WITHIN DIMENSIONS	MATERIAL NO. SEE TABLE	DOCUMENT NO. SD-74993-002	SHEET NO. 2 OF 2	
			SIZE B	THIS DRAWING CONTAINS INFORMATION THAT IS PROPRIETARY TO MOLEX INCORPORATED AND SHOULD NOT BE USED WITHOUT WRITTEN PERMISSION			
			MOLEX INCORPORATED				

9 8 7 6 5 4 3 2 1