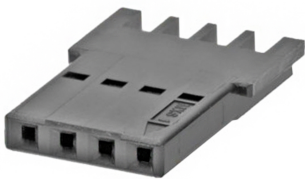




Part Number : [467090004](#)
Product Description : EXTreme Ten60Power
Signal Housing, 4 Circuits
Series Number : 46709
Status : Active
Product Category : Connector Housings




Documents & Resources

Drawings
[467090004_sd.pdf](#)
[PK-46709-0001-001.pdf](#)

Specifications
[PS-173693-001-001.pdf](#)

Product Environment Compliance

Compliance

GADSL/IMDS	Not Relevant
China RoHS	
EU ELV	Compliant per 2000/53/EC
Low-Halogen Status	Low-Halogen per IEC 61249-2-21
REACH SVHC	Not Contained per D(2024)6225-DC (07 Nov 2024)
EU RoHS	Compliant per EU 2015/863

Multiple Part Product Compliance Statements

- Eu RoHS
- REACH SVHC
- Low-Halogen

Multiple Part Industry Compliance Documents

- IPC 1752A Class C
- IPC 1752A Class D
- Molex Product Compliance Declaration
- IEC-62474
- chemSHERPA (xml)

Part Details

General

Status	Active
Category	Connector Housings
Series	46709
Description	EXTreme Ten60Power Signal Housing, 4 Circuits
Application	Signal, Wire-to-Board
Comments	Panel Mount when used with Panel-to-Board receptacle housing 172512
Keyword	Ten60
Product Name	EXTreme Ten60Power
UPC	889056027908

Physical

Circuits (maximum)	4
Color - Resin	Black
Gender	Receptacle
Glow-Wire Capable	No
Keying to Mating Part	None
Lock to Mating Part	Yes
Material - Resin	Nylon
Net Weight	0.360/g
Number of Rows	3
Packaging Type	Bag
Panel Mount	Yes
Pitch - Mating Interface	2.54mm
Polarized to Mating Part	Yes
Temperature Range - Operating	-40° to +105°C

Mates With / Use With

Mates with Part(s)

Description	Part Number
EXTreme Ten60Power Wire-to-Board Right-Angle Plug Assemblies	<u>172453</u>
EXTreme Ten60Power Panel-to-Board Right-Angle Plug Assemblies	<u>172458</u>

Use with Part(s)

Description	Part Number
EXTreme Ten60Power Wire-to-Board Receptacle Housings	<u>172510</u>
EXTreme Ten60Power Panel-to-Board Receptacle Housings	<u>172512</u>
SL Female Terminals	<u>70058</u>