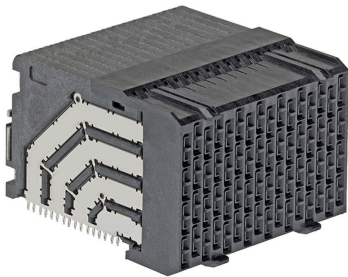




Part Number : [1732101126](#)
Product Description : Impel Plus 90 Ohm, 6-Pair Right-Angle Daughtercard, 1.90mm Pitch, Unguided, 16 Columns, 192 Circuits, Plated Through Hole Dimension 0.31mm
Series Number : 173210
Status : Active
Product Category : Backplane Connectors



Documents & Resources

Drawings

[Drawing 1732101126_sd.pdf](#)
[Packaging Design Drawing 1732100002-PK-PK.pdf](#)

3D Models and Design Files

[3D Model 1732101126_stp.zip](#)
[3D Model PDF 1732101126.pdf](#)
[Electrical Model Document 1732101118-000.pdf](#)
[Electrical Model Document 1732101117-000.pdf](#)
[S-Parameter Model 1732101118-000.zip](#)
[S-Parameter Model 1732101117-000.zip](#)
[S-Parameter Model 1727301118-000.zip](#)

Specifications

[Application Specification AS-172730-990-001.pdf](#)
[Application Specification 1713209994-AS-000.pdf](#)
[Application Specification 1727309992-AS-000.pdf](#)
[Product Specification 1727409990-000.pdf](#)

Product Environment Compliance

Compliance

GADSL/IMDS	Not Relevant
China RoHS	
EU ELV	Not Relevant
Low-Halogen Status	Low-Halogen per IEC 61249-2-21
REACH SVHC	Not Contained per D(2023)3788-DC (14 Jun 2023)
EU RoHS	Compliant per EU 2015/863

Multiple Part Product Compliance Statements

- Eu RoHS
- REACH SVHC
- Low-Halogen

Multiple Part Industry Compliance Documents

- IPC 1752A Class C
- IPC 1752A Class D
- Molex Product Compliance Declaration
- IEC-62474
- chemSHERPA (xml)

EU RoHS Certificate of Compliance

Part Details

General

Status	Active
Category	Backplane Connectors
Series	173210
Description	Impel Plus 90 Ohm, 6-Pair Right-Angle Daughtercard, 1.90mm Pitch, Unguided, 16 Columns, 192 Circuits, Plated Through Hole Dimension 0.31mm
Application	Coplanar, Daughtercard
Component Type	PCB Receptacle
Product Family	Impel and Impel Plus Backplane Solutions
Product Name	Impel Plus
UPC	191128439077

Electrical

Current - Maximum per Contact	0.75A
Data Rate	56.0 Gbps
Impedance	90Ω
Shield Type	Full Shield
Shielded	Yes
Voltage - Maximum	29.9V AC (RMS)/DC

Physical

Circuits (Loaded)	192
Circuits (maximum)	192
Color - Resin	Black
Durability (mating cycles max)	200
First Mate / Last Break	No
Guide to Mating Part	No
Keying to Mating Part	None
Material - Metal	High Performance Alloy (HPA)
Material - Plating Mating	Gold
Material - Plating Termination	Tin
Material - Resin	High Temperature Thermoplastic
Net Weight	72.359/g
Number of Columns	16
Number of Pairs	6
Number of Rows	12
Orientation	Right Angle
Packaging Type	Tray
PC Tail Length	1.30mm
PCB Locator	No
PCB Retention	None
PCB Thickness - Recommended	1.00mm
Pitch - Mating Interface	1.90mm
Pitch - Termination Interface	1.90mm
Plating min - Mating	0.762µm
Temperature Range - Operating	-55° to +85°C
Termination Interface Style	Through Hole - Compliant Pin

Solder Process Data

Lead-Free Process Capability	N/A
------------------------------	-----

Mates With / Use With

Mates with Part(s)

Description	Part Number
-------------	-------------

Impel 90 Ohm, 6 Pair Vertical Backplane Header, 1.90mm Pitch, Unguided, Open Endwalls, 8 Columns, 96 Circuits, Pin Length 4.90mm, Plated Through Hole Dimension 0.36mm	<u>1713951807</u>
Impel 90 Ohm, 6 Pair Vertical Backplane Header, 1.90mm Pitch, Unguided, Open Endwalls, 8 Columns, 96 Circuits, Pin Length 5.50mm, Plated Through Hole Dimension 0.36mm	<u>1713951808</u>