

PLEASE CHECK WWW.MOLEX.COM FOR LATEST PART INFORMATION

Part Number: [1731070103](#)
Status: **Active**
Overview: [FCT D-Sub Connectors](#)
Description: FCT Mixed Layout D-Sub Connector, Female, Straight, Solder Cup, Gold Plating, Tin-plated Shell without Dimples, 11 Circuits, 10 Signal Contacts Loaded

Documents:

[Datasheet \(PDF\)](#)

[Brochure \(PDF\)](#)

[RoHS Certificate of Compliance \(PDF\)](#)

General

Product Family	D-Sub Products
Series	173107
IP Rating	IP20
Overview	FCT D-Sub Connectors
Product Category	D-Sub Connector
Product Name	FCT Products
Type	Mixed Layout
UPC	889056324809

Physical

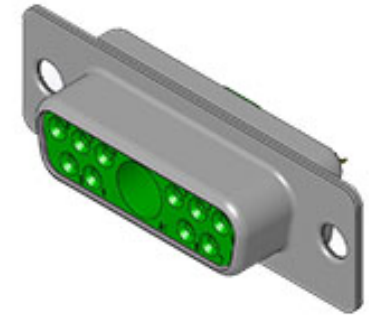
Circuits (Loaded)	10
Circuits (maximum)	11
Color - Resin	Green
Durability (mating cycles max)	500
Gender	Female
Material - Contact	Copper Alloy
Material - Resin	PBT
Material - Shell	Steel
Net Weight	7.400/g
Number of Rows	2
Orientation	Straight
PCB Locator	No
PCB Retention	None
Packaging Type	Carton
Panel Mount	Rear
Panel Mount Method	Flange
Pitch - Mating Interface	2.84mm
Pitch - Termination Interface	2.84mm
Plating - Contact	Gold over Nickel
Plating - Shell	Tin
Plating min - Mating	0.800µm
Polarized to Mating Part	Yes
Ports	1
Shielded	Yes
Temperature Range - Operating	-55° to +130°C
Termination Style	Solder Cup
Waterproof / Dustproof	No
Waterproof / Dustproof Type	IP20
Wire Size AWG	20

Electrical

Current - Maximum per Contact	7.5A
-------------------------------	------

Material Info

Engineering Number	FM11W1S-K121
--------------------	--------------



Series image - Reference only

EU ELV

Not Relevant

EU RoHS

Compliant with Exemption 6(c)

REACH SVHC

Contained Per - ED/71/2019 (16 July 2019)
lead

Halogen-Free

Status

Not Reviewed

For more information, please visit [Contact US](#)

China ROHS

ELV

RoHS Phthalates

China RoHS

50 Image

Not Relevant

Not Contained

Search Parts in this Series

[173107 Series](#)

Mates With

FCT Mixed Layout D-Sub, Size 2, 11W1, Plug

Use With

FCT Coaxial, High Power, High Voltage, or Pneumatic Contacts

This document was generated on 07/30/2021

PLEASE CHECK WWW.MOLEX.COM FOR LATEST PART INFORMATION