

**PLEASE CHECK WWW.MOLEX.COM FOR LATEST PART INFORMATION**

**Part Number:** [5600200323](#)  
**Status:** **Active**  
**Overview:** [DuraClik Connector System](#)  
**Description:** DuraClik Wire-to-Board Header, Single Row, Vertical, 3 Circuits, Tin (Sn) Plating, Blue

**Documents:**

[3D Model](#) [Packaging Specification PK-560020-002-JP-001 \(PDF\)](#)  
[Drawing \(PDF\)](#) [RoHS Certificate of Compliance \(PDF\)](#)

**General**

Product Family PCB Headers  
Series [560020](#)  
Application Signal, Wire-to-Board  
Comments The Operating Temperature Range when used with DuraClik series 502351 is -40°C to +105°C. It is -40°C to 125°C when used with DuraClik ISL series 560123 or TPA series 505151.  
Overview [DuraClik Connector System](#)  
Product Name DuraClik  
UPC 889056679985

**Physical**

Breakaway No  
Circuits (Loaded) 3  
Circuits (maximum) 3  
Color - Resin Blue  
Durability (mating cycles max) 30  
First Mate / Last Break No  
Glow-Wire Capable No  
Keying to Mating Part None  
Lock to Mating Part Yes  
Material - Metal Copper Alloy  
Material - Plating Mating Tin over Nickel  
Material - Resin Polyamide  
Net Weight 0.578/g  
Number of Rows 1  
Orientation Vertical  
PCB Locator No  
PCB Retention Yes  
Packaging Type Embossed Tape on Reel  
Pitch - Mating Interface 2.00mm  
Polarized to Mating Part Yes  
Polarized to PCB Yes  
Stackable No  
Temperature Range - Operating -40° to +105°C, -40° to +125°C  
Termination Interface: Style Surface Mount

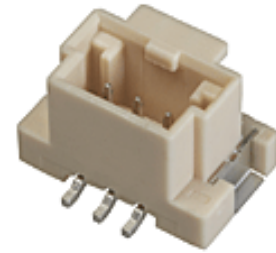
**Electrical**

Current - Maximum per Contact 3.0A  
Voltage - Maximum 125V AC (RMS)/DC

**Material Info**

**Reference - Drawing Numbers**

Packaging Specification [PK-560020-002-JP-001](#)  
Sales Drawing [SD-560020-001-001](#), [SD-560020-003-001](#)



*Series image - Reference only*

**EU ELV  
Compliant**

**EU RoHS  
Compliant  
REACH SVHC**

Not Contained Per -  
ED/61/2018 (27 June  
2018)

**Halogen-Free  
Status**

**Not Low-Halogen**

For more information, please visit [Contact US](#)

China ROHS	Green Image
ELV	Compliant
RoHS Phthalates	Not Contained

**Search Parts in this Series**

[560020](#) Series

**Mates With**

DuraClik Crimp Housings [502351](#) , [560123](#) , [505151](#)

This document was generated on 10/18/2018

**PLEASE CHECK [WWW.MOLEX.COM](http://WWW.MOLEX.COM) FOR LATEST PART INFORMATION**