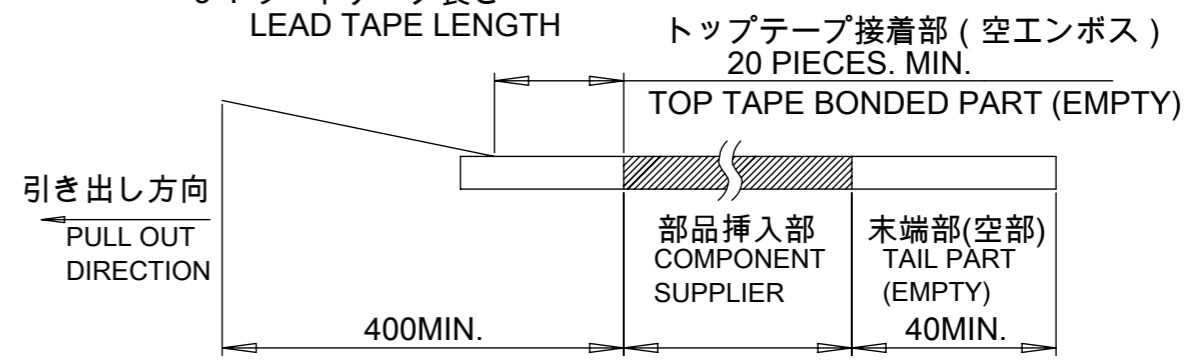


NOTES.

- 製品詳細寸法については製品単体図面を参照ください。
ABOUT DETAILED DIMENSION, SEE PRODUCT DRAWING.
- 梱包数量：1100個 / リール
NUMBER OF CONNECTORS : 1100PIECES/REEL
- リードテープ長さ
LEAD TAPE LENGTH

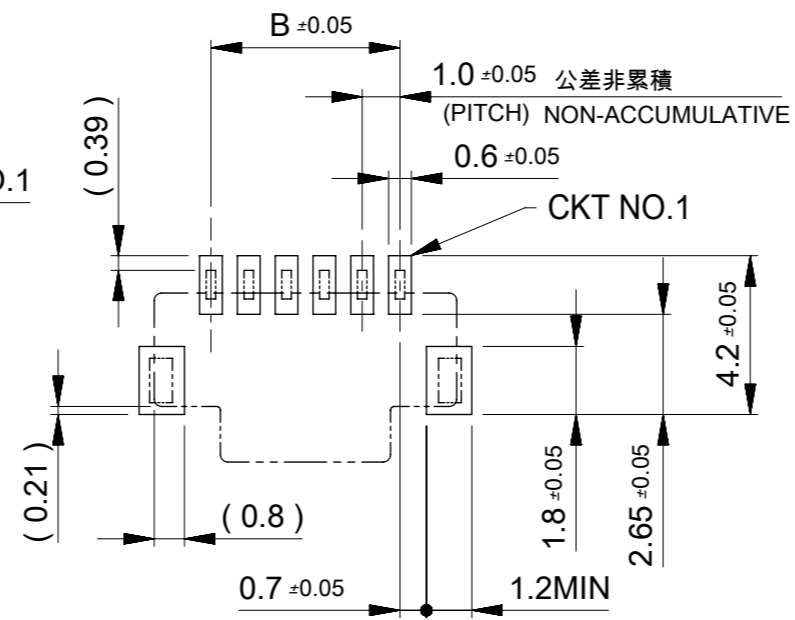
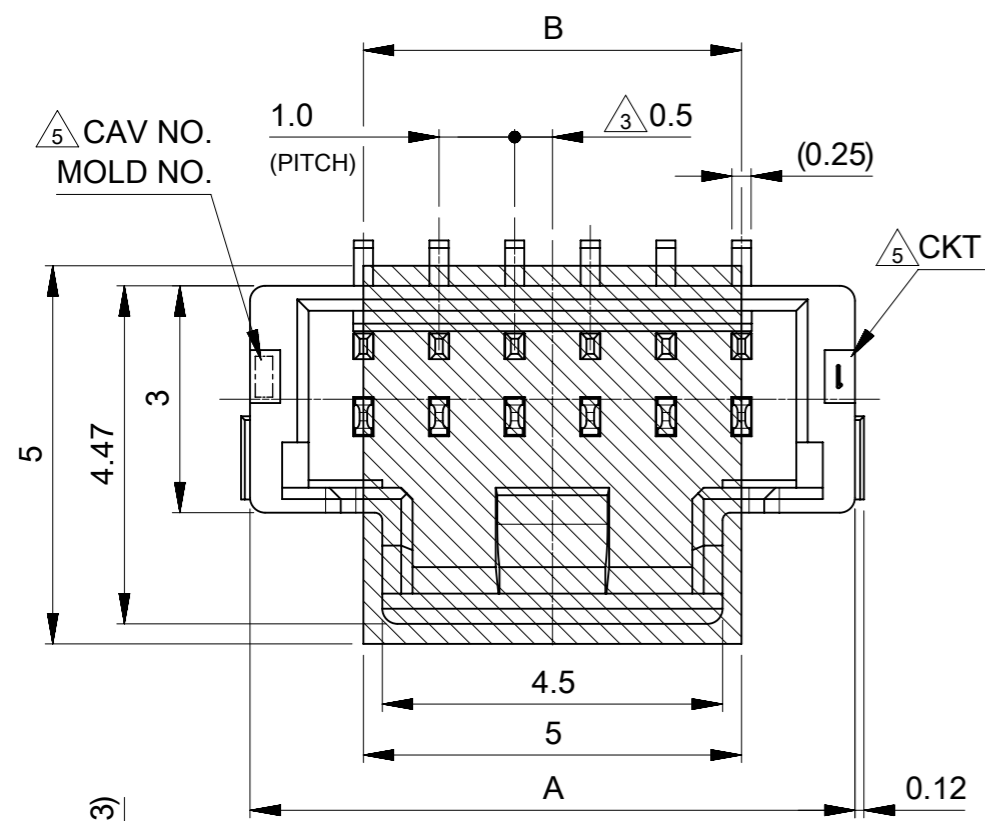


4. 材料

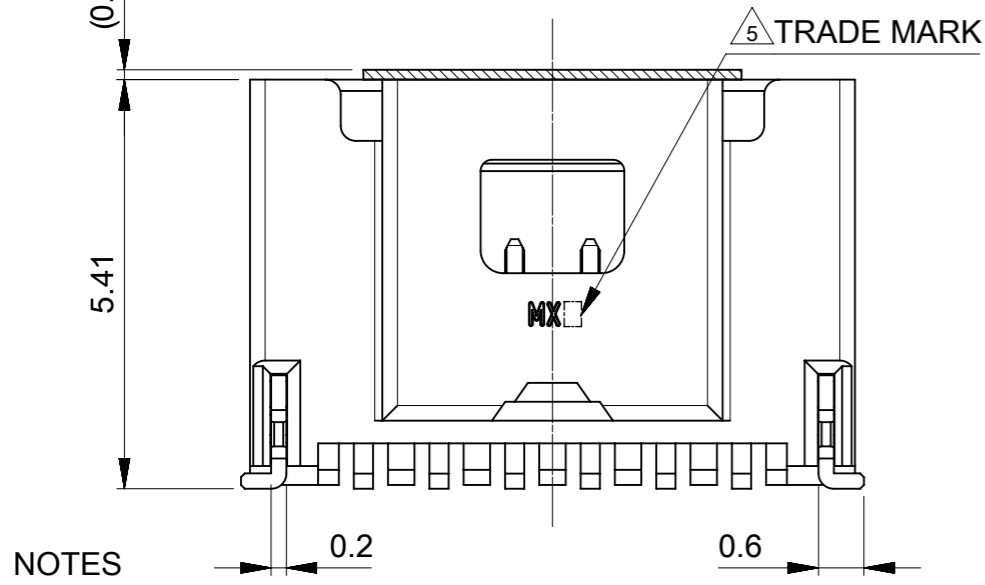
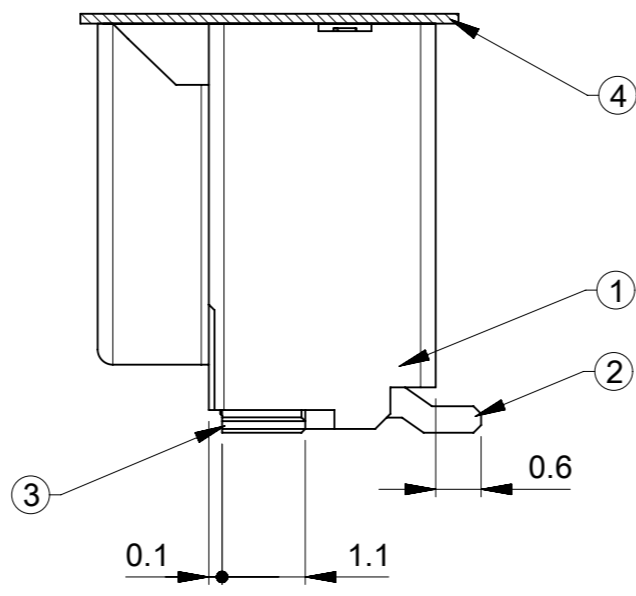
MATERIAL
 キャリアテープ：ポリプロピレン(PP)
 CARRIER TAPE : POLYPROPYLENE(PP)
 トップテープ：ポリエステル(P E T)、ポリエチレン(P E)、
 ポリエチレンフラノエート(P E F)
 TOP TAPE
 リール：ポリスチレン(PS)<リサイクル材を含む>
 REEL : POLYSTYRENE(PS) <RECYCLE MATERIAL CONTAINED>

THIS DRAWING CONTAINS INFORMATION THAT IS PROPRIETARY TO MOLEX ELECTRONIC TECHNOLOGIES, LLC AND SHOULD NOT BE USED WITHOUT WRITTEN PERMISSION

EC NO: 168346 DRWN: KYAMADA02 CHK'D: SAKIYAMA APPR: TKANEKO	2017/10/04 2017/11/30 2017/12/01	GENERAL TOLERANCES (UNLESS SPECIFIED) ANGULAR TOL ± 3.0 °	DIMENSION UNITS: mm SCALE: NTS			
	4 PLACES ± 0.2 3 PLACES ± 0.2 2 PLACES ± 0.2 1 PLACE ± 0.2 0 PLACES ± 0.2	DRWN BY: KYAMADA02 DATE: 2017/10/04	CHK'D BY: SAKIYAMA DATE: 2017/11/30			
	DRAFT WHERE APPLICABLE MUST REMAIN WITHIN DIMENSIONS	APPR BY: TKANEKO DATE: 2017/12/01	DRAWING SIZE: A3 THIRD ANGLE PROJECTION	PRODUCT CUSTOMER DRAWING		
				SERIES: 203556 MATERIAL NUMBER: SEE CHART CUSTOMER: GENERAL		
				DOCUMENT NUMBER: 2035560607-SD DOC TYPE: PSD DOC PART: 000 SHEET NUMBER: 1 OF 2		



参考パターンレイアウト
 RECOMMENDED PATTERN DIM. (REF)
 SCALE:5:1 (メタルマスク厚:0.12mm)



- NOTES**
1. 嵌合相手: 501330****
MATE WITH: 501330****
 2. ソルダーピン及びネイルの平坦度は0.1 MAX.
SOLDER PIN AND NAIL COPLANARITY TO BE 0.1 MAX.
 3. 極数=偶数適用。
APPLY FOR CKT. SIZE=EVEN.
 4. 2~5極は 2035560209-SD を参照ください。
REFER TO 2035560209-SD ABOUT 2-5 CKT.
 5. トレードマーク: MXプラス1文字の示すアルファベットにて構成。
キャビティー番号: 1桁から2桁の数字で表示
金型番号: アルファベット1文字にて構成。
FORMED BY MX AND 1 MORE LETTER OF ALPHABET (TO TRADE MARK.)
AND BY I DIGIT NUMBER (TO CAVITY NO.)
AND BY I LETTER OF ALPHABET (TO MOLD NO.)

番号 NO.	部品 PART	材質 MATERIAL
①	ウエハー WAFER	ポリアミド、UL94V-0、色: 自然色 POLYAMIDE, UL94V-0, COLOR: NATURAL
②	ソルダーピン SOLDER PIN	りん青銅 PHOSPHOR BRONZE 金めっき(接触部): 0.38 MICRO METER MINIMUM. GOLD PLATING (CONTACT AREA) 金めっき(テール部): 0.1 MICRO METER MINIMUM. GOLD PLATING (TAIL AREA) ニッケルめっき(下地): 1.27 MICRO METER MINIMUM. NICKEL (UNDER PLATING)
③	ネイル NAIL	りん青銅 PHOSPHOR BRONZE 錫めっき: 1.0 MICRO METER MINIMUM. TIN PLATING ニッケルめっき(下地): 1.0 MICRO METER MINIMUM. NICKEL (UNDER PLATING)
④	カバーテープ COVER TAPE	ポリイミドテープ POLYIMIDE TAPE

14.0	17.0	2035561507	15
13.0	16.0	2035561407	14
12.0	15.0	2035561307	13
11.0	14.0	2035561207	12
10.0	13.0	2035561107	11
9.0	12.0	2035561007	10
8.0	11.0	2035560907	9
7.0	10.0	2035560807	8
6.0	9.0	2035560707	7
5.0	8.0	2035560607	6
B	A	EMBOSSED PACKAGE	極数
		オーダー番号 ORDER NO.	CKT.
CONNECTOR SERIES NO.203556***9			

THIS DRAWING CONTAINS INFORMATION THAT IS PROPRIETARY TO MOLEX ELECTRONIC TECHNOLOGIES, LLC AND SHOULD NOT BE USED WITHOUT WRITTEN PERMISSION

EC NO: 168346 DRWN: KYAMADA02 CHK'D: SAKIYAMA APPR: TKANEKO	2017/11/02 2017/11/30 2017/12/01	GENERAL TOLERANCES (UNLESS SPECIFIED) ANGULAR TOL ± 3.0 °	DIMENSION UNITS: mm SCALE: 10:1		
	4 PLACES ± 0.2 3 PLACES ± 0.2 2 PLACES ± 0.2 1 PLACE ± 0.2 0 PLACES ± 0.2	DRWN BY: KYAMADA02 DATE: 2017/11/02	DRIFT WHERE APPLICABLE MUST REMAIN WITHIN DIMENSIONS		DRAWING SIZE: A3 THIRD ANGLE PROJECTION
	PRODUCT CUSTOMER DRAWING	DRWN BY: SAKIYAMA DATE: 2017/11/30	SERIES: 203556 MATERIAL NUMBER: SEE TABLE CUSTOMER: GENERAL		PICO-CLASP 1.0W/B SINGLE-ROW ST WAFER ASSY 6-15CKT (GOLD VERSION 0.38)
	DOCUMENT NUMBER: 2035560609-SD DOC TYPE: PSD DOC PART: 000 SHEET NUMBER: 1 OF 1	APPR BY: TKANEKO DATE: 2017/12/01	CUSTOMER: GENERAL		PRODUCT CUSTOMER DRAWING