

COLOR = BLACK

COLOR = NATURAL

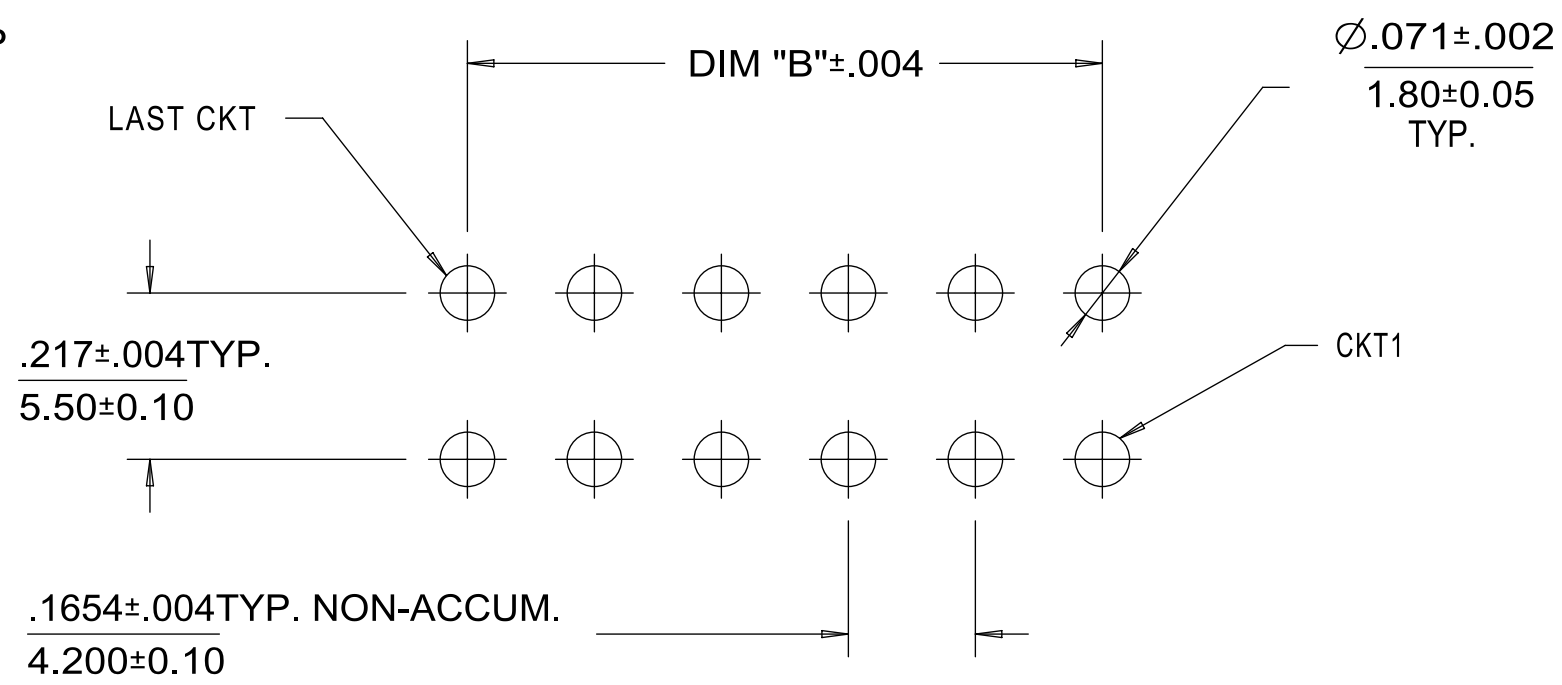
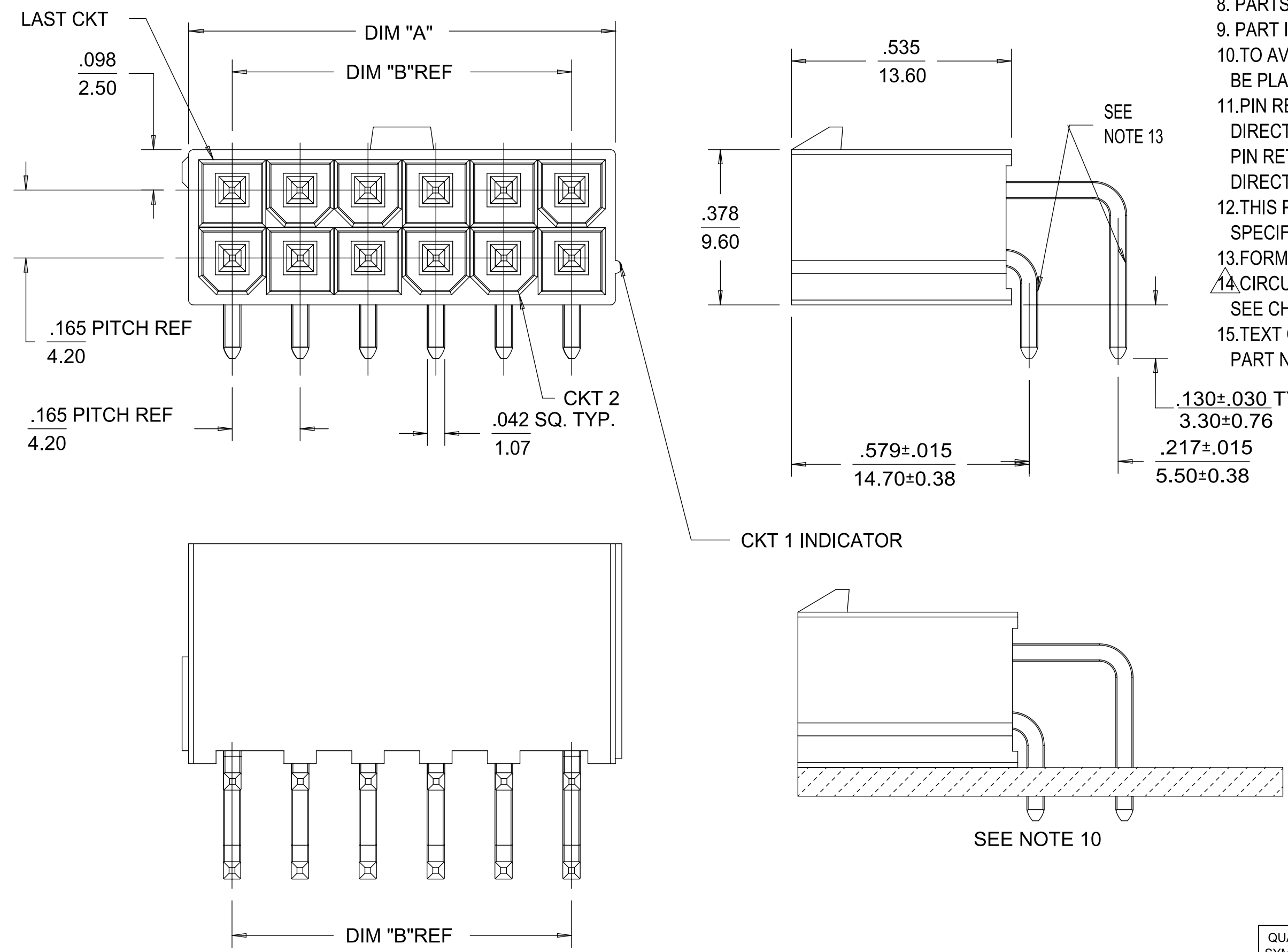
NOTES:

- MATERIAL:
HOUSING - LIQUID CRYSTAL POLYMER (LCP), COLOR: SEE CHART.
TERMINAL - BRASS
- TERMINAL PLATING: TIN = .000100/0.00254 MATTE TIN OVER
.000050/0.00127 NICKEL OVERALL
GOLD= .000030/0.00076 MIN. SELECT GOLD OVER
.000100/0.00254 MIN. SELECT MATTE TIN OVER
.000050/0.00127 MIN NICKEL OVERALL
- PRODUCT SPECIFICATION: PS-46207-001.
- PACKAGING SPECIFICATION: TRAY PACKED PER PK-5569-003 OR
TAPE AND REEL PACKAGED PER PK-46991-001.
- PART MATES WITH MINIFIT JR RECEPTACLE SERIES 5557
- DISCOLORIZATION IN THE BANDOLIER CARRIER AREA OF THE PIN IS
INHERENT TO THE PLATING PROCESS AND IS DUE TO THE MASKING EFFECT
OF THE CARRIER. THIS DISCOLORIZATION IS A NON-FUNCTIONAL AREA OF
THE PIN AND WILL NOT AFFECT THE PERFORMANCE OF THE HEADER ASSEMBLY.
- CONNECTORS ARE NOT TO BE MATED OR UNMATED WHILE CIRCUITS ARE LIVE.
- PARTS ARE NOT DESIGNED FOR CURRENT SHARING.
- PART IS INTENDED FOR PIN IN PASTE REFLOW SOLDER ONLY.
- TO AVOID INTERFERENCE BETWEEN THE RECEPTACLE AND PCB. HEADER MUST
BE PLACED AT THE EDGE OF PCB AS SHOWN.
- PIN RETENTION IN HOUSING IS 2.2 LBS/1 KG MIN. BOTH
DIRECTIONS FOR TIN PLATING.
PIN RETENTION IN HOUSING IS 1.0 LBS/0.45 KG MIN. BOTH
DIRECTIONS FOR GOLD PLATING.
- THIS PART CONFORMS TO CLASS B REQUIREMENTS OF COSMETIC
SPECIFICATION PS-45499-002.
- FORMING MARKS ON PINS ARE ACCEPTABLE.
- CIRCUITS SHOWN PROVIDE THE MATE-FIRST/BREAK-LAST FEATURE.
SEE CHART ON SHEET 2 FOR SPECIFIC CIRCUIT LOCATIONS.
- TEXT ON PART IS FOR REFERENCE ONLY. TEXT AND TEXT LOCATION MAY VARY DEPENDING ON
PART NUMBER AND/OR TOOL.

H CKT SIZE	TIN PLATING		GOLD PLATING		TIN PLATING	DIM "A"	DIM "B"
	TRAY PACK MATERIAL NUMBER	TAPE & REEL MATERIAL NUMBER	TRAY PACK MATERIAL NUMBER	TAPE & REEL MATERIAL NUMBER			
4	46991-1004	46991-4004	X	46991-2004		.38/9.6	.165/4.20
6	46991-1006	X 46991-4006	X	46991-2006	X 46991-3006	.54/13.8	.331/8.40
8	46991-1008	X 46991-4008	X	46991-2008	X 46991-3008	.71/18.0	.496/12.60
10	46991-1010	46991-4010	X	46991-2010	X 46991-3010	.87/22.2	.661/16.80
12	46991-1012	X 46991-4012	X	46991-2012	X 46991-3012	1.04/26.4	.827/21.00
14	X 46991-1014	X 46991-4014	X	46991-2014	X 46991-3014	1.21/30.6	.992/25.20
16	X 46991-1016	X 46991-4016	X	46991-2016	X 46991-3016	1.37/34.8	1.160/29.40
18	X 46991-1018	X 46991-4018	X	46991-2018	X 46991-3018	1.54/39.0	1.323/33.60
20	X 46991-1020	X 46991-4020	X	46991-2020	X 46991-3020	1.70/43.2	1.488/37.80
22	X 46991-1022	X 46991-4022	X	46991-2022	X 46991-3022	1.87/47.4	1.654/42.00
24	46991-1024	46991-4024	X	46991-2024	X 46991-3024	2.03/51.6	1.819/46.20

X DESIGNATES NOT TOOLED

SEE SHEET 2 FOR PART NUMBERS WITH VOIDS & MFBL

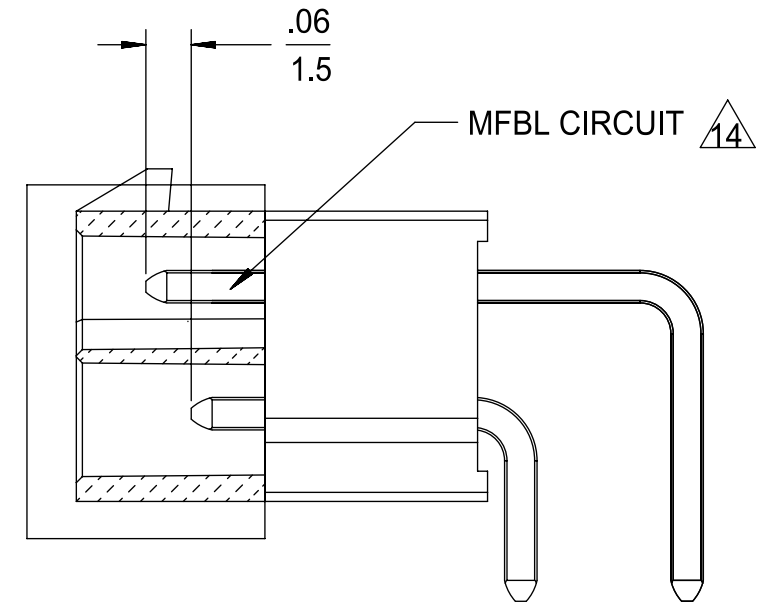
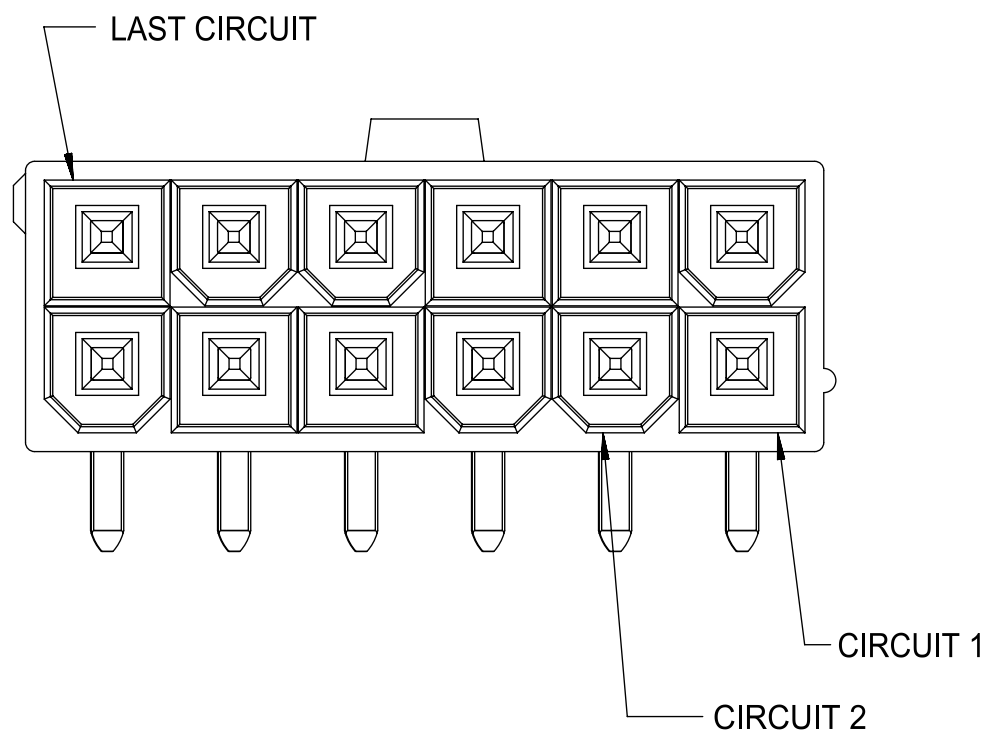


RECOMMENDED PCB HOLE LAYOUT FOR .070/1.78 MAX THICK P.C. BOARD
VIEWED FROM COMPONENT SIDE

QUALITY SYMBOLS	THIS DRAWING CONTAINS INFORMATION THAT IS PROPRIETARY TO MOLEX ELECTRONIC TECHNOLOGIES, LLC AND SHOULD NOT BE USED WITHOUT WRITTEN PERMISSION			
	2017/06/14 2017/07/24 2017/07/27 RELEASE 46991-4024 EC NO: 118145 DRWN: BAPPELDORN CHKD: JBELL REV / APPR: FSMITH	GENERAL TOLERANCES (UNLESS SPECIFIED) 4 PLACES ± 3 PLACES ± ± 0.01 2 PLACES ± 0.25 ± 0.015 1 PLACES ± 0.38 ± 0 PLACES ± ± ANGULAR TOL ± 0.5 DRAFT WHERE APPLICABLE MUST REMAIN WITHIN DIMENSIONS	DIMENSION UNITS IN/MM SCALE 4:1 DRWN BY JKLOSTERMEIE DATE 2008/12/19 CHK'D BY JBELL DATE 2008/12/10 APPR BY FSMITH DATE 2008/12/15 DRAWING SIZE C THIRD ANGLE PROJECTION	<p>MINIFIT RTC RIGHT ANGLE HEADER ASSEMBLY W/O MOUNTING PEGS</p> <p>PRODUCT CUSTOMER DRAWING</p>
RELEASE STATUS 12 11 10 9 8 7 6 5 4 3 2 1	SERIES 46991 MATERIAL NUMBER SEE CHART CUSTOMER GENERAL MARKET	DOCUMENT NUMBER SD-46991-001 DOC TYPE PSD DOC PART 000 SHEET NUMBER 1 OF 2		

MATERIAL NUMBER	NO OF CKT	PKG	PLATING SEE NOTE #2	PIN IDENTIFICATION CODE / CIRCUIT LOCATION (SEE CHART BELOW)																							
				CKT 1	CKT 2	CKT 3	CKT 4	CKT 5	CKT 6	CKT 7	CKT 8	CKT 9	CKT 10	CKT 11	CKT 12	CKT 13	CKT 14	CKT 15	CKT 16	CKT 17	CKT 18	CKT 19	CKT 20	CKT 21	CKT 22	CKT 23	CKT 24
46991-5001	06	TRAY	TIN	2	V	2	2	V	2																		
46991-5002	04	TRAY	TIN	1	2	1	1																				

PIN ID	MATING CONFIGURATION
1	MATE FIRST/BREAK LAST (LONGER)
2	STANDARD MATING



CKT SIZE	DIM "A"	DIM "B"
4	.38/9.6	.165/4.20
6	.54/13.8	.331/8.40
8	.71/18.0	.496/12.60
10	.87/22.2	.661/16.80
12	1.04/26.4	.827/21.00
14	1.21/30.6	.992/25.20
16	1.37/34.8	1.160/29.40
18	1.54/39.0	1.323/33.60
20	1.70/43.2	1.488/37.80
22	1.87/47.4	1.654/42.00
24	2.03/51.6	1.819/46.20

THIS DRAWING CONTAINS INFORMATION THAT IS PROPRIETARY TO MOLEX ELECTRONIC TECHNOLOGIES, LLC AND SHOULD NOT BE USED WITHOUT WRITTEN PERMISSION

QUALITY SYMBOLS 	RELEASE 46991-4024 EC NO: 118145 DRWN: BAPPELDORN CHKD: JBELL REV / APPR: FSMITH	2017/06/14 2017/07/24 2017/07/27	GENERAL TOLERANCES (UNLESS SPECIFIED) MM INCH 4 PLACES ± ± 3 PLACES ± ± 0.01 2 PLACES ± 0.25 ± 0.015 1 PLACES ± 0.38 ± 0 PLACES ± ± ANGULAR TOL ± 0.5 DRAFT WHERE APPLICABLE MUST REMAIN WITHIN DIMENSIONS	DIMENSION UNITS IN/MM SCALE 4:1 DRWN BY JKLOSTERMEIE DATE 2008/12/19 CHK'D BY JBELL DATE 2008/12/10 APPR BY FSMITH DATE 2008/12/15 DRAWING SIZE C THIRD ANGLE PROJECTION		
		MINIFIT RTC RIGHT ANGLE HEADER ASSEMBLY W/O MOUNTING PEGS			PRODUCT CUSTOMER DRAWING	
		SERIES 46991	MATERIAL NUMBER SEE CHART	CUSTOMER GENERAL MARKET	DOCUMENT NUMBER SD-46991-001	DOC TYPE PSD DOC PART 000 SHEET NUMBER 2 OF 2